

KANSAS CORPORATION COMMISSION
OIL & GAS CONSERVATION DIVISION

TEMPORARY ABANDONMENT WELL APPLICATION

OPERATOR: License#
Name:
Address 1:
Address 2:
City: State: Zip:
Contact Person:
Phone:
Contact Person Email:
Field Contact Person:
Field Contact Person Phone:

API No. 15-
Spot Description:
Sec. Twp. S. R.
GPS Location: Lat: Long:
Datum: NAD27 NAD83 WGS84
County: Elevation:
Lease Name: Well #:
Well Type: Oil Gas OG WSW Other:
SWD Permit #: ENHR Permit #:
Gas Storage Permit #:
Spud Date: Date Shut-In:

Table with 7 columns: Conductor, Surface, Production, Intermediate, Liner, Tubing. Rows include Size, Setting Depth, Amount of Cement, Top of Cement, Bottom of Cement.

Casing Fluid Level from Surface: How Determined? Date:
Casing Squeeze(s): to w / sacks of cement, to w / sacks of cement. Date:
Do you have a valid Oil & Gas Lease? Yes No
Depth and Type: Junk in Hole at Tools in Hole at Casing Leaks: Yes No Depth of casing leak(s):
Type Completion: ALT. I ALT. II Depth of: DV Tool: w / sacks of cement Port Collar: w / sack of cement
Packer Type: Size: Inch Set at: Feet
Total Depth: Plug Back Depth: Plug Back Method:

Geological Data:

Table with 4 columns: Formation Name, Formation Top, Formation Base, Completion Information. Rows 1 and 2.

UNDER PENALTY OF PERJURY I HEREBY ATTEST THAT THE INFORMATION CONTAINED HEREIN IS TRUE AND CORRECT TO THE BEST OF MY KNOWLEDGE

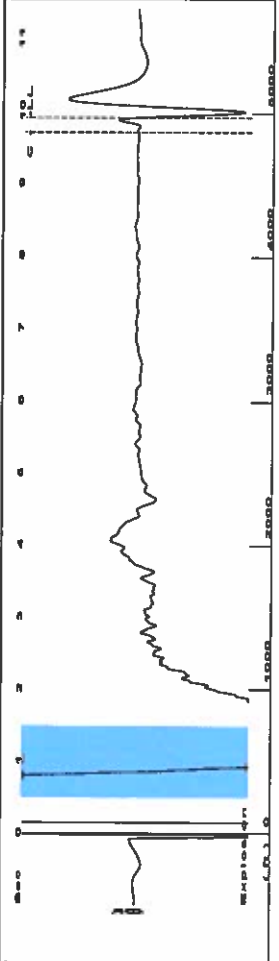
Submitted Electronically

Do NOT Write in This Space - KCC USE ONLY
Date Tested: Results: Date Plugged: Date Repaired: Date Put Back in Service:
Review Completed by: Comments:
TA Approved: Yes Denied Date:

Mail to the Appropriate KCC Conservation Office:

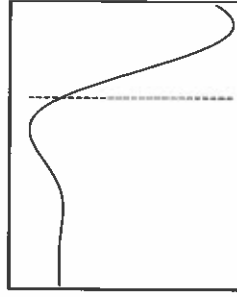
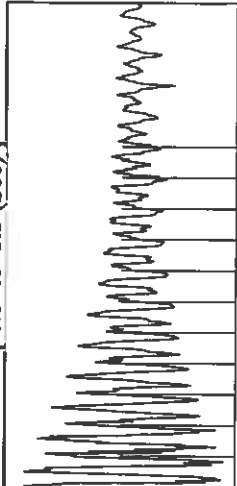
Table with 2 columns: Office Address, Phone. Rows for District Office #1, #2, #3, #4.

Group: Merit Energy Company-Ulysses Well: LMLU 601 (acquired on: 08/30/22 14:19:12)



Filter Type High Pass Automatic Collar Count Yes Time 9.907 sec
 Manual Acoustic Veloc 998.425 ft/s Manual JTS/sec 15.748 Joints 156.77 Jts
 Depth 4969.60 ft

[0.5 to 1.5 (Sec)]



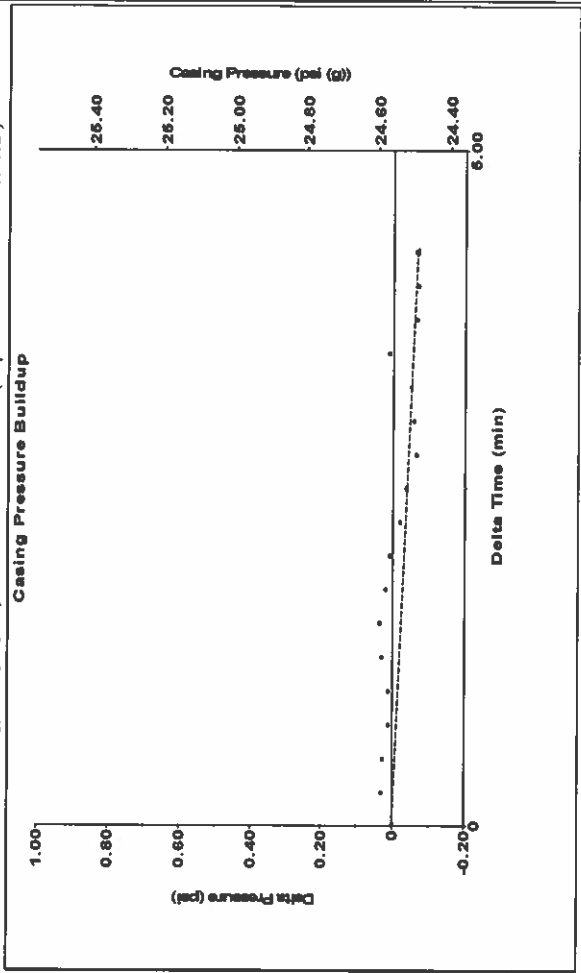
Analysis Method: Automatic

Group Merit Energy Company-Ulysses Well: LMLU 601 (acquired on: 08/30/22 14:19:12)

| | | | |
|---------------------------------------|-------------------------|-------------------------------|-------------------|
| Production | Potential | Casing Pressure | Producing |
| Oil - * - BBL/D | 24.6 psi (g) | 24.6 psi (g) | Annular |
| Water - * - BBL/D | Casing Pressure Buildup | -0.1 psi | Gas Flow 0 Mscf/D |
| Gas - * - Mscf/D | 4.25 min | Gas/Liquid Interface Pressure | % Liquid 100 % |
| IPR Method Vogel | 31.5 psi (g) | Liquid Level Depth | Pump Intake |
| PBHP/SBHP - * - | | 4969.60 ft | 100.0 psi (g) |
| Production Efficiency 0.0 | | Pump Intake Depth | Producing BHP |
| | | 5170.00 ft | 83.0 psi (g) |
| Oil 40 deg API | | Formation Depth | Static BHP |
| Water 1.05 Sp.Gr.H2O | | 5120.00 ft | - * - psi (g) |
| Gas 0.98 Sp.Gr.AIR | | | |
| Acoustic Velocity 1003.25 ft/s | | | |
| Formation Submergence | | | |
| Total Gaseous Liquid Column HT (TVDD) | 200 ft | | |
| Equivalent Gas Free Liquid HT (TVDD) | 200 ft | | |

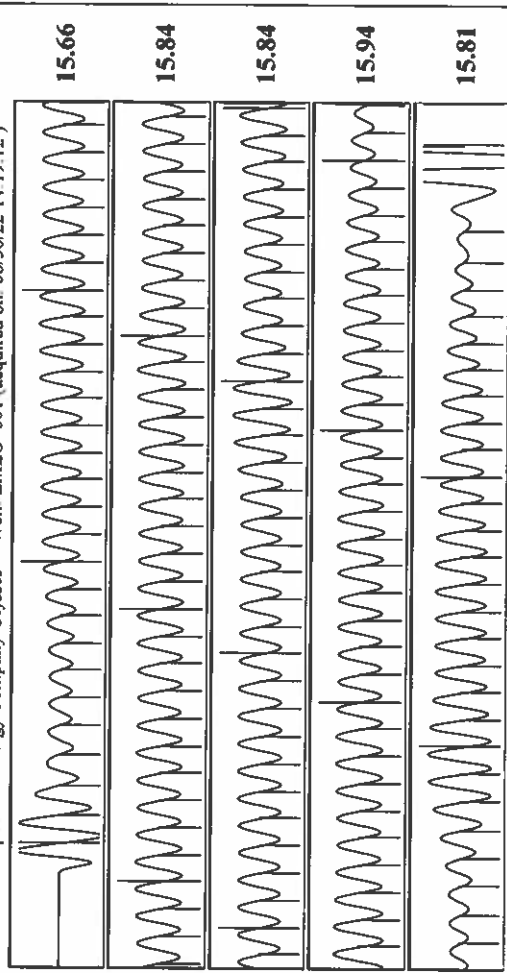
8/30/22

Group: Merit Energy Company-Ulysses Well: LMLU 601 (acquired on: 08/30/22 14:19:12)



Change in Pressure -0.07 psi PT18865 Range
 Change in Time 4.25 min 0 - 7 psi

Group: Merit Energy Company-Ulysses Well: LMLU 601 (acquired on: 08/30/22 14:19:12)



Acoustic Velocity 1003.25 ft/s Joints counted 149
 Joints Per Second 15.8241 Jts/sec Joints to liquid level 156.77
 Depth to liquid level 4969.6 ft Filter Width 17.748
 Automatic Collar Count Yes Time to 1st Collar 9.704

Conservation Division
District Office No. 1
210 E. Frontview, Suite A
Dodge City, KS 67801



Phone: 620-682-7933
<http://kcc.ks.gov/>

Dwight D. Keen, Chair
Susan K. Duffy, Commissioner
Andrew J. French, Commissioner

Laura Kelly, Governor

September 15, 2022

Katherine McClurkan
Merit Energy Company, LLC
13727 Noel Road, Suite 1200
Dallas, TX 75240

Re: Temporary Abandonment
API 15-067-21509-00-00
Lander Morrow Lime Unit 601
NE/4 Sec.24-27S-35W
Grant County, Kansas

Dear Katherine McClurkan:

"Your temporary abandonment (TA) application for the well listed above has been approved. In accordance with K.A.R. 82-3-111 the TA status of this well will expire 09/15/2023.

- * If you return this well to service or plug it, please notify the District Office.
- * If you sell this well you are required to file a Transfer of Operator form, T-1.
- * If the well will remain temporarily abandoned, you must submit a new TA application, CP-111, before 09/15/2023.

You may contact me at the number above if you have questions.

Very truly yours,

Michael Maier"