

KANSAS CORPORATION COMMISSION
OIL & GAS CONSERVATION DIVISION

TEMPORARY ABANDONMENT WELL APPLICATION

OPERATOR: License#
Name:
Address 1:
Address 2:
City: State: Zip:
Contact Person:
Phone:
Contact Person Email:
Field Contact Person:
Field Contact Person Phone:

API No. 15-
Spot Description:
Sec. Twp. S. R.
GPS Location: Lat: Long:
Datum: NAD27 NAD83 WGS84
County: Elevation:
Lease Name: Well #:
Well Type: Oil Gas OG WSW Other:
SWD Permit #: ENHR Permit #:
Gas Storage Permit #:
Spud Date: Date Shut-In:

Table with 7 columns: Conductor, Surface, Production, Intermediate, Liner, Tubing. Rows include Size, Setting Depth, Amount of Cement, Top of Cement, Bottom of Cement.

Casing Fluid Level from Surface: How Determined? Date:
Casing Squeeze(s): to w / sacks of cement, to w / sacks of cement. Date:
Do you have a valid Oil & Gas Lease? Yes No
Depth and Type: Junk in Hole at Tools in Hole at Casing Leaks: Yes No Depth of casing leak(s):
Type Completion: ALT. I ALT. II Depth of: DV Tool: w / sacks of cement Port Collar: w / sack of cement
Packer Type: Size: Inch Set at: Feet
Total Depth: Plug Back Depth: Plug Back Method:

Geological Date:

Table with 4 columns: Formation Name, Formation Top, Formation Base, Completion Information. Rows 1 and 2.

UNDER PENALTY OF PERJURY I HEREBY ATTEST THAT THE INFORMATION CONTAINED HEREIN IS TRUE AND CORRECT TO THE BEST OF MY KNOWLEDGE

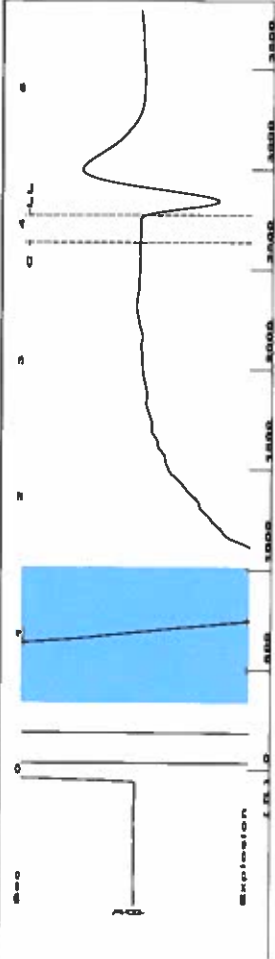
Submitted Electronically

Do NOT Write in This Space - KCC USE ONLY
Date Tested: Results: Date Plugged: Date Repaired: Date Put Back in Service:
Review Completed by: Comments:
TA Approved: Yes Denied Date:

Mail to the Appropriate KCC Conservation Office:

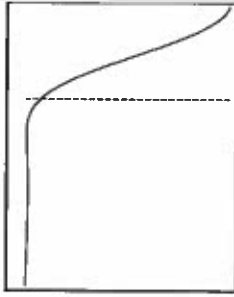
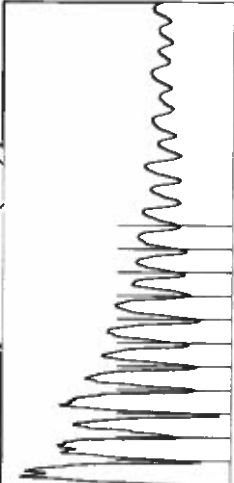
Table with 3 columns: District Office #, Address, Phone. Rows 1-4.

Group: Merit Energy Company-Ulysses Well: Eubanks A-2 (acquired on: 08/30/22 13:44:18)



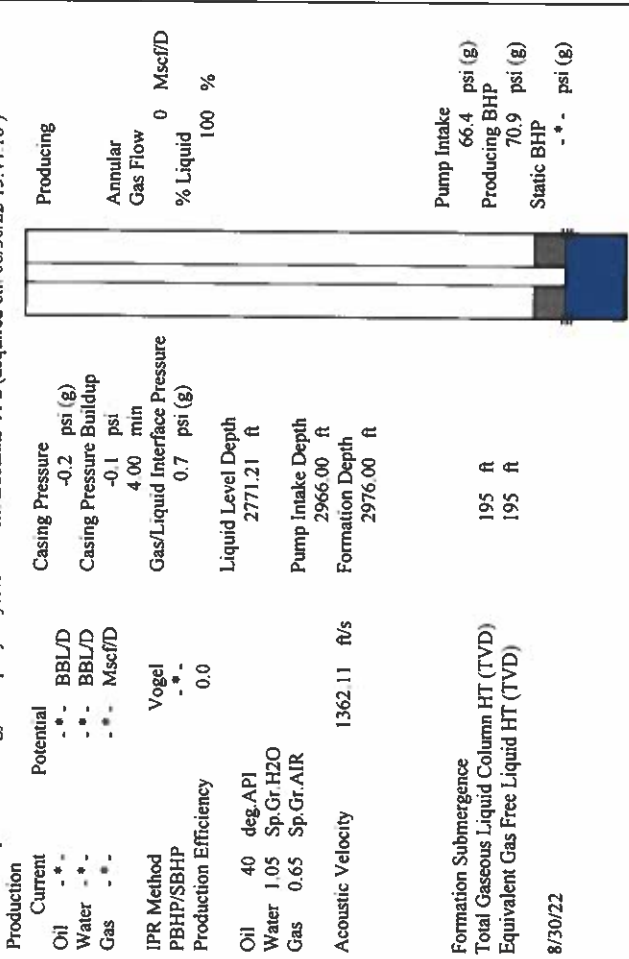
Filter Type High Pass Automatic Collar Count Yes Time 4.069 sec
 Manual Acoustic Veloc 1312.63 ft/s Manual JTS/sec 20.7039 Joints 87.4199 Jts
 Depth 2771.21 ft

[0.5 to 1.5 (Sec)]



Analysis Method: Automatic

Group: Merit Energy Company-Ulysses Well: Eubanks A-2 (acquired on: 08/30/22 13:44:18)



Producing
 Annular Gas Flow 0 Mscf/D
 % Liquid 100 %

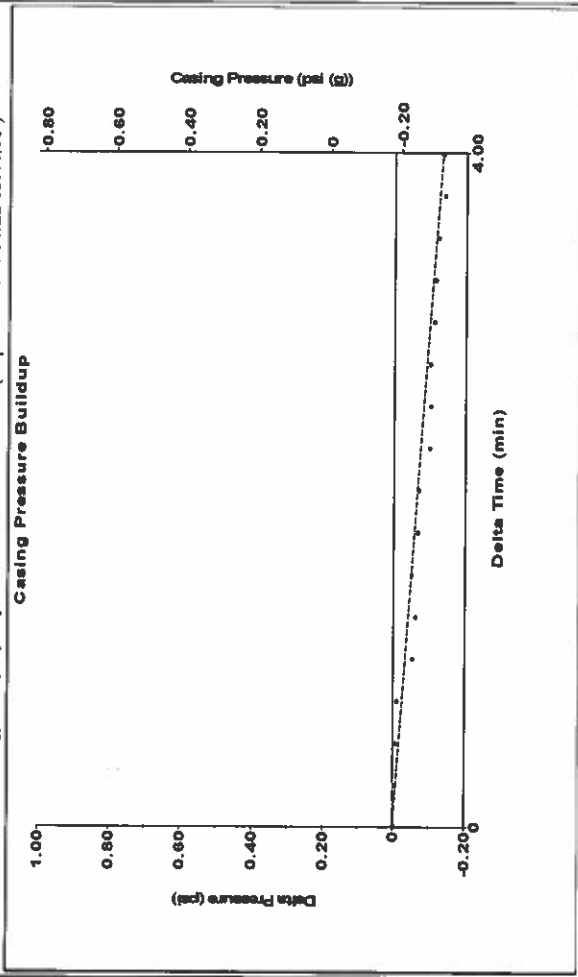
Pump Intake 66.4 psi (g)
 Producing BHP 70.9 psi (g)
 Static BHP - * - psi (g)

Production
 Current Potential
 Oil - * - BBL/D -0.2 psi (g)
 Water - * - BBL/D -0.1 psi
 Gas - * - Mscf/D 4.00 min
 IPR Method Vogel Gas/Liquid Interface Pressure 0.7 psi (g)
 PBHP/SBHP - * -
 Production Efficiency 0.0
 Oil 40 deg-API Liquid Level Depth 2771.21 ft
 Water 1.05 Sp.Gr.H2O Pump Intake Depth 2966.00 ft
 Gas 0.65 Sp.Gr.AIR Formation Depth 2976.00 ft
 Acoustic Velocity 1362.11 ft/s

Formation Submergence 195 ft
 Total Gaseous Liquid Column HT (TVD) 195 ft
 Equivalent Gas Free Liquid HT (TVD)

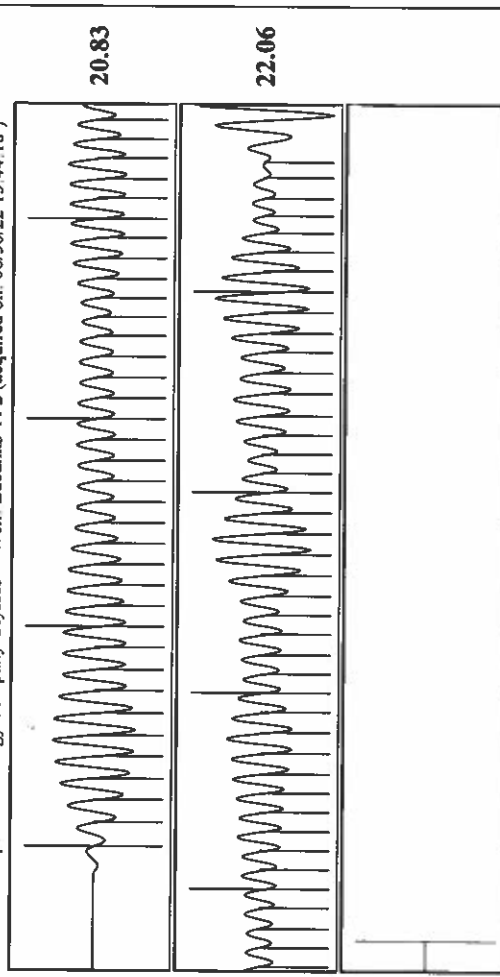
8/30/22

Group: Merit Energy Company-Ulysses Well: Eubanks A-2 (acquired on: 08/30/22 13:44:18)



Change in Pressure -0.13 psi PT18865
 Change in Time 4.00 min Range

Group: Merit Energy Company-Ulysses Well: Eubanks A-2 (acquired on: 08/30/22 13:44:18)



Acoustic Velocity 1362.11 ft/s Joints counted 77
 Joints Per Second 21.4844 Jts/sec Joints to liquid level 87.4199
 Depth to liquid level 2771.21 ft Filter Width 18.7039
 Automatic Collar Count Yes Time to 1st Collar 0.284 22.7039 3.868

Conservation Division
District Office No. 1
210 E. Frontview, Suite A
Dodge City, KS 67801



Phone: 620-682-7933
<http://kcc.ks.gov/>

Dwight D. Keen, Chair
Susan K. Duffy, Commissioner
Andrew J. French, Commissioner

Laura Kelly, Governor

September 15, 2022

Katherine McClurkan
Merit Energy Company, LLC
446 South Road M
Dallas, TX 75240

Re: Temporary Abandonment
API 15-067-20354-00-00
Eubanks A 2
NE/4 Sec.14-28S-35W
Grant County, Kansas

Dear Katherine McClurkan:

"Your temporary abandonment (TA) application for the well listed above has been approved. In accordance with K.A.R. 82-3-111 the TA status of this well will expire 09/15/2023.

- * If you return this well to service or plug it, please notify the District Office.
- * If you sell this well you are required to file a Transfer of Operator form, T-1.
- * If the well will remain temporarily abandoned, you must submit a new TA application, CP-111, before 09/15/2023.

You may contact me at the number above if you have questions.

Very truly yours,

Michael Maier"