

KANSAS CORPORATION COMMISSION
OIL & GAS CONSERVATION DIVISION

TEMPORARY ABANDONMENT WELL APPLICATION

OPERATOR: License#
Name:
Address 1:
Address 2:
City: State: Zip:
Contact Person:
Phone:
Contact Person Email:
Field Contact Person:
Field Contact Person Phone:

API No. 15-
Spot Description:
Sec. Twp. S. R.
GPS Location: Lat: Long:
Datum: NAD27 NAD83 WGS84
County: Elevation:
Lease Name: Well #:
Well Type: Oil Gas OG WSW Other:
SWD Permit #: ENHR Permit #:
Gas Storage Permit #:
Spud Date: Date Shut-In:

Table with 7 columns: Conductor, Surface, Production, Intermediate, Liner, Tubing. Rows include Size, Setting Depth, Amount of Cement, Top of Cement, Bottom of Cement.

Casing Fluid Level from Surface: How Determined? Date:
Casing Squeeze(s): to w / sacks of cement, to w / sacks of cement. Date:
Do you have a valid Oil & Gas Lease? Yes No
Depth and Type: Junk in Hole at Tools in Hole at Casing Leaks: Yes No Depth of casing leak(s):
Type Completion: ALT. I ALT. II Depth of: DV Tool: w / sacks of cement Port Collar: w / sack of cement
Packer Type: Size: Inch Set at: Feet
Total Depth: Plug Back Depth: Plug Back Method:

Geological Data:

Table with 4 columns: Formation Name, Formation Top, Formation Base, Completion Information. Rows 1 and 2.

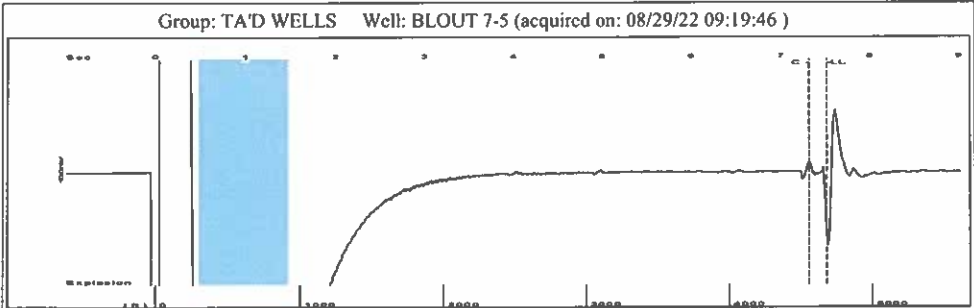
UNDER PENALTY OF PERJURY I HEREBY ATTEST THAT THE INFORMATION CONTAINED HEREIN IS TRUE AND CORRECT TO THE BEST OF MY KNOWLEDGE

Submitted Electronically

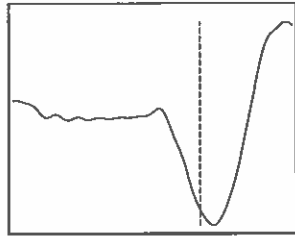
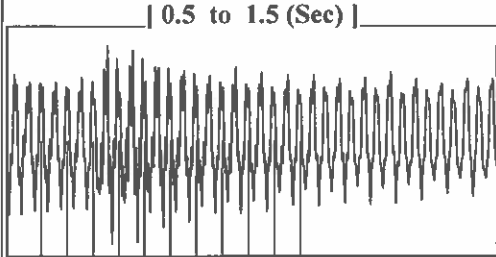
Form with fields: Do NOT Write in This Space - KCC USE ONLY, Date Tested, Results, Date Plugged, Date Repaired, Date Put Back in Service, Review Completed by, Comments, TA Approved: Yes Denied, Date.

Mail to the Appropriate KCC Conservation Office:

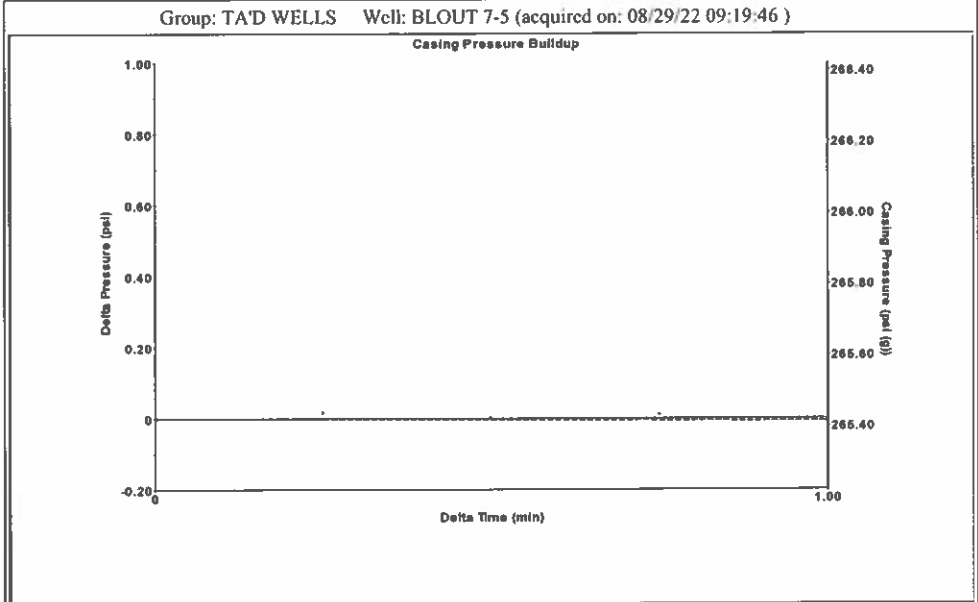
Table with 2 columns: Office Address, Phone. Rows for KCC District Office #1, #2, #3, #4.



Filter Type High Pass Automatic Collar Count Yes Time 7.514 sec  
 Manual Acoustic Velol 200.76 ft/s Manual JTS/sec 18.9394 Joints 147.543 Jts  
 Depth 4677.11 ft



Analysis Method: Automatic



Change in Pressure -0.01 psi PT10411  
 Change in Time 1.00 min Range 0 - ? psi

Group: TA'D WELLS Well: BLOUT 7-5 (acquired on: 08/29/22 09:19:46)

<b>Production</b>	<b>Potential</b>	<b>Casing Pressure</b>		<b>Producing</b>
Current		265.4 psi (g)		Annular Gas Flow
Oil - * -	- * - BBL/D	Casing Pressure Buildup		0 Mscf/D
Water - * -	- * - BBL/D	-0.0 psi		% Liquid
Gas - * -	- * - Mscf/D	1.00 min		100 %
IPR Method	Vogel	Gas/Liquid Interface Pressure		
PBHP/SBHP	- * -	300.7 psi (g)		
Production Efficiency	0.0	Liquid Level Depth		
Oil 40 deg.API		4677.11 ft		
Water 1.05 Sp.Gr.H2O		Pump Intake Depth		
Gas 0.73 Sp.Gr.AIR		4564.00 ft		
Acoustic Velocity	1244.91 ft/s	Formation Depth		
		4693.00 ft		
Formation Submergence		Pump Intake		
Total Gaseous Liquid Column HT (TVD)	- * - ft	299.8 psi (g)		
Equivalent Gas Free Liquid HT (TVD)	- * - ft	Producing BHP		
		307.9 psi (g)		
Acoustic Test		Static BHP		
		- * - psi (g)		

Group: TA'D WELLS Well: BLOUT 7-5 (acquired on: 08/29/22 09:19:46)

Acoustic Velocity	1244.91 ft/s	Joints counted	138
Joints Per Second	19.6357 jts/sec	Joints to liquid level	147.543
Depth to liquid level	4677.11 ft	Filter Width	16.9394 20.9394
Automatic Collar Count	Yes	Time to 1st Collar	0.284 7.312

Conservation Division  
District Office No. 1  
210 E. Frontview, Suite A  
Dodge City, KS 67801



Phone: 620-682-7933  
<http://kcc.ks.gov/>

Dwight D. Keen, Chair  
Susan K. Duffy, Commissioner  
Andrew J. French, Commissioner

Laura Kelly, Governor

September 15, 2022

Katherine McClurkan  
Merit Energy Company, LLC  
13727 Noel Road, Suite 1200  
Dallas, TX 75240-7362

Re: Temporary Abandonment  
API 15-129-21692-00-00  
Blout 7-5  
SE/4 Sec.05-33S-42W  
Morton County, Kansas

Dear Katherine McClurkan:

"Your temporary abandonment (TA) application for the well listed above has been approved. In accordance with K.A.R. 82-3-111 the TA status of this well will expire 09/15/2023.

- \* If you return this well to service or plug it, please notify the District Office.
- \* If you sell this well you are required to file a Transfer of Operator form, T-1.
- \* If the well will remain temporarily abandoned, you must submit a new TA application, CP-111, before 09/15/2023.

You may contact me at the number above if you have questions.

Very truly yours,

Michael Maier"