

KANSAS CORPORATION COMMISSION
OIL & GAS CONSERVATION DIVISION

Form must be Typed
Form must be signed

TEMPORARY ABANDONMENT WELL APPLICATION

All blanks must be complete

OPERATOR: License#
Name:
Address 1:
Address 2:
City: State: Zip:
Contact Person:
Phone:
Contact Person Email:
Field Contact Person:
Field Contact Person Phone:

API No. 15-
Spot Description:
Sec. Twp. S. R.
feet from N / S Line of Section
feet from E / W Line of Section
GPS Location: Lat: , Long:
Datum: NAD27 NAD83 WGS84
County: Elevation: GL KB
Lease Name: Well #:
Well Type: (check one) Oil Gas OG WSW Other:
SWD Permit #: ENHR Permit #:
Gas Storage Permit #:
Spud Date: Date Shut-In:

Table with 7 columns: Conductor, Surface, Production, Intermediate, Liner, Tubing. Rows include Size, Setting Depth, Amount of Cement, Top of Cement, Bottom of Cement.

Casing Fluid Level from Surface: How Determined? Date:
Casing Squeeze(s): to w / sacks of cement, to w / sacks of cement. Date:
Do you have a valid Oil & Gas Lease? Yes No
Depth and Type: Junk in Hole at Tools in Hole at Casing Leaks: Yes No Depth of casing leak(s):
Type Completion: ALT. I ALT. II Depth of: DV Tool: w / sacks of cement Port Collar: w / sack of cement
Packer Type: Size: Inch Set at: Feet
Total Depth: Plug Back Depth: Plug Back Method:

Geological Date:

Table with 4 columns: Formation Name, Formation Top, Formation Base, Completion Information. Rows 1 and 2.

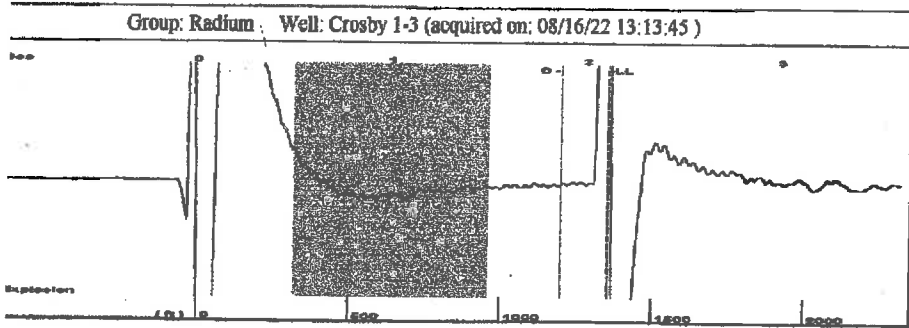
UNDER PENALTY OF PERJURY I HEREBY ATTEST THAT THE INFORMATION CONTAINED HEREIN IS TRUE AND CORRECT TO THE BEST OF MY KNOWLEDGE

Submitted Electronically

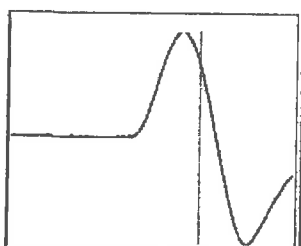
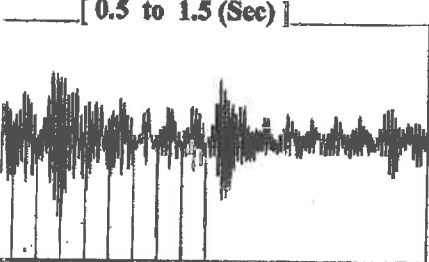
Do NOT Write in This Space - KCC USE ONLY
Date Tested: Results: Date Plugged: Date Repaired: Date Put Back in Service:
Review Completed by: Comments:
TA Approved: Yes Denied Date:

Mail to the Appropriate KCC Conservation Office:

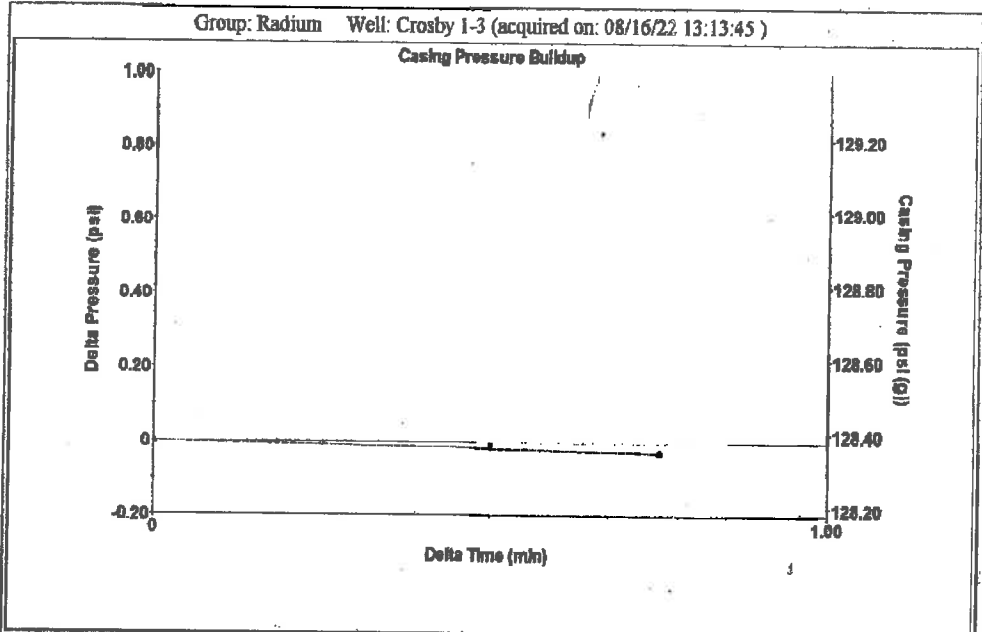
Table with 3 columns: District Office #, Address, Phone. Rows 1-4.



Type High Pass Automatic Collar Count Yes Time 2.109 sec  
 Acoustic Velocity 1280.81 ft/s Manual JTS/sec 20.202 Joints 42.7139 Jts  
 Depth 1354.03 ft



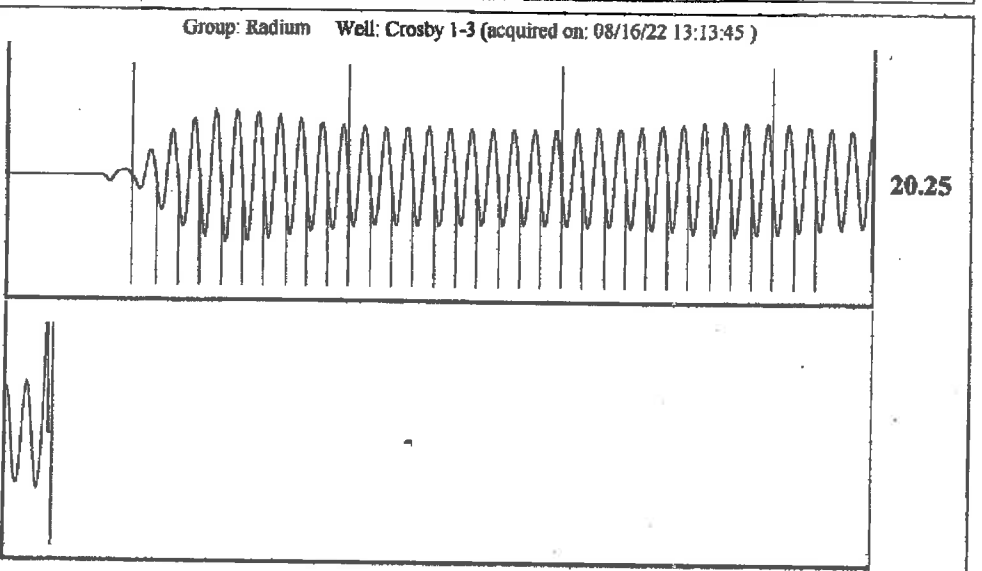
Analysis Method: Automatic



Change in Pressure -0.03 psi PT13440  
 Change in Time 0.75 min Range 0-? psi

Group: Radium Well: Crosby 1-3 (acquired on: 08/16/22 13:13:45)

Action Current Potential BBL/D BBL/D Mscf/D Method Vogel P/SBHP Action Efficiency 40 deg API r 1.05 Sp.Gr.H2O 0.68 Sp.Gr.AIR Static Velocity 1284.05 ft/s Action Submergence Gaseous Liquid Column HT (TVD) 2392 ft valent Gas Free Liquid HT (TVD) 2392 ft Static Test	Casing Pressure 128.4 psi (g) Casing Pressure Buildup -0.028 psi 0.75 min Gas/Liquid Interface Pressure 133.2 psi (g) Liquid Level Depth 1354.03 ft Pump Intake Depth 3746.00 ft Formation Depth 3684.00 ft Pump Intake 919.1 psi (g) Producing BHP 899.6 psi (g) Static BHP -? psi (g)	Producing Annular Gas Flow 0 Mscf/D % Liquid 100 %
---	---	--



Acoustic Velocity	1284.05 ft/s	Joints counted	32
Joints Per Second	20.2532 jts/sec	Joints to liquid level	42.7139
Depth to liquid level	1354.03 ft	Filter Width	18.202
Automatic Collar Count	Yes	Time to 1st Collar	0.288

September 15, 2022

Loveness Mpanje  
F. G. Holl Company L.L.C.  
9431 E CENTRAL STE 100  
WICHITA, KS 67206-2563

Re: Temporary Abandonment  
API 15-145-21627-00-00  
CROSBY 1-3  
SW/4 Sec.03-20S-16W  
Pawnee County, Kansas

Dear Loveness Mpanje:

"Your temporary abandonment (TA) application for the well listed above has been approved. In accordance with K.A.R. 82-3-111 the TA status of this well will expire 09/15/2023.

- \* If you return this well to service or plug it, please notify the District Office.
- \* If you sell this well you are required to file a Transfer of Operator form, T-1.
- \* If the well will remain temporarily abandoned, you must submit a new TA application, CP-111, before 09/15/2023.

You may contact me at the number above if you have questions.

Very truly yours,

Michael Maier"