

KANSAS CORPORATION COMMISSION
OIL & GAS CONSERVATION DIVISION

TEMPORARY ABANDONMENT WELL APPLICATION

OPERATOR: License#
Name:
Address 1:
Address 2:
City: State: Zip:
Contact Person:
Phone:
Contact Person Email:
Field Contact Person:
Field Contact Person Phone:

API No. 15-
Spot Description:
Sec. Twp. S. R.
GPS Location: Lat: Long:
Datum: NAD27 NAD83 WGS84
County: Elevation:
Lease Name: Well #:
Well Type: Oil Gas OG WSW Other:
SWD Permit #: ENHR Permit #:
Gas Storage Permit #:
Spud Date: Date Shut-In:

Table with 7 columns: Conductor, Surface, Production, Intermediate, Liner, Tubing. Rows include Size, Setting Depth, Amount of Cement, Top of Cement, Bottom of Cement.

Casing Fluid Level from Surface: How Determined? Date:
Casing Squeeze(s): to w / sacks of cement, to w / sacks of cement. Date:
Do you have a valid Oil & Gas Lease? Yes No
Depth and Type: Junk in Hole at Tools in Hole at Casing Leaks: Yes No Depth of casing leak(s):
Type Completion: ALT. I ALT. II Depth of: DV Tool: w / sacks of cement Port Collar: w / sack of cement
Packer Type: Size: Inch Set at: Feet
Total Depth: Plug Back Depth: Plug Back Method:

Geological Date:

Table with 4 columns: Formation Name, Formation Top, Formation Base, Completion Information. Rows 1 and 2.

UNDER PENALTY OF PERJURY I HEREBY ATTEST THAT THE INFORMATION CONTAINED HEREIN IS TRUE AND CORRECT TO THE BEST OF MY KNOWLEDGE

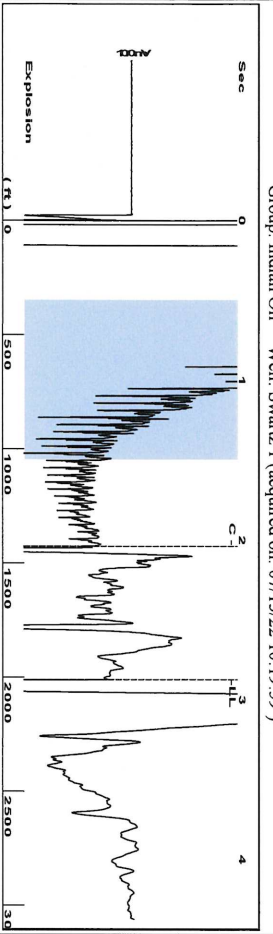
Submitted Electronically

Do NOT Write in This Space - KCC USE ONLY
Date Tested: Results: Date Plugged: Date Repaired: Date Put Back in Service:
Review Completed by: Comments:
TA Approved: Yes Denied Date:

Mail to the Appropriate KCC Conservation Office:

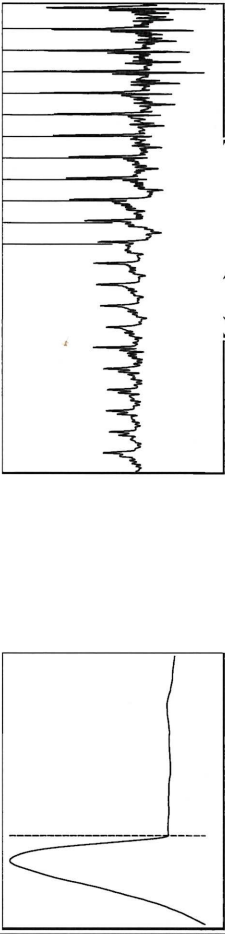
Map of Kansas with 4 numbered districts. Table with 3 columns: District Office Name, Address, Phone Number.

Group: Indian Oil Well: Swartz 1 (acquired on: 07/13/22 10:19:59)

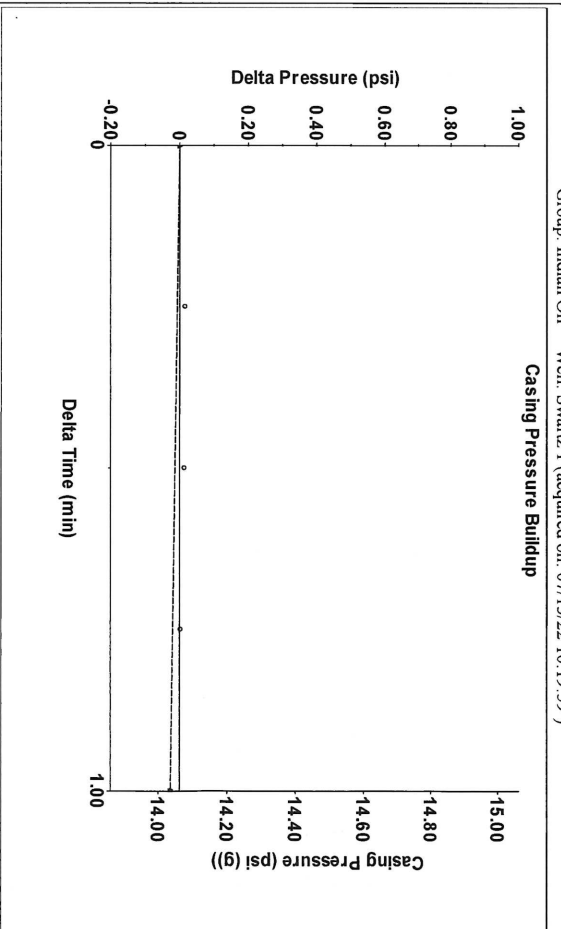


Filter Type: High Pass
Manual Acoustic Velocity: 1378.26 ft/s
Automatic Collar Count: Yes
Manual JTS/sec: 21.7391
Time: 2.875 sec
Joints: 63.4191 Jts
Depth: 2010.39 ft

0.5 to 1.5 (Sec) |

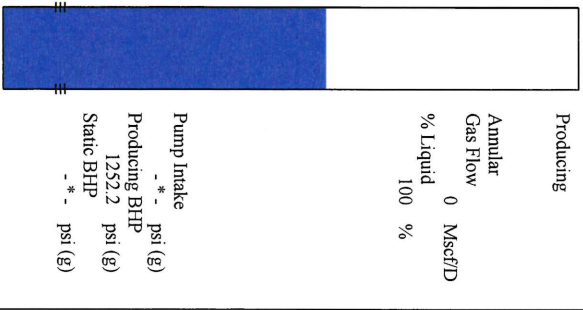


Group: Indian Oil Well: Swartz 1 (acquired on: 07/13/22 10:19:59)

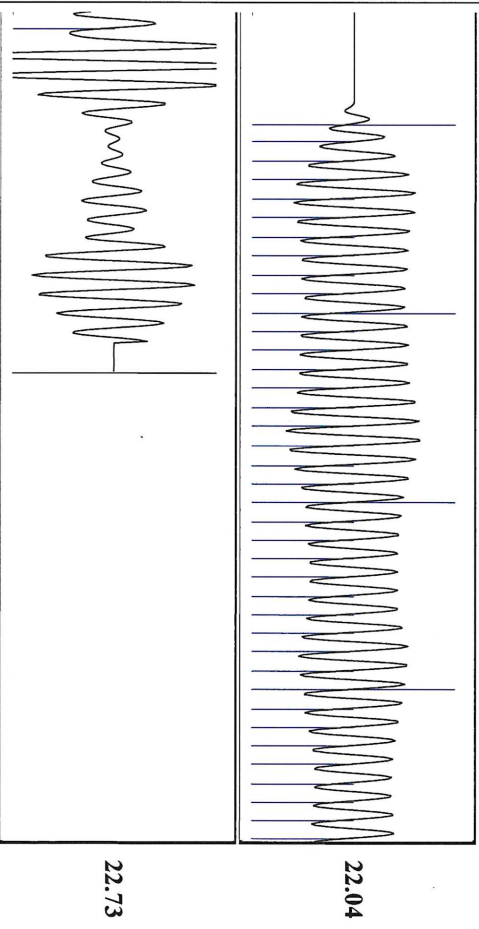


Group: Indian Oil Well: Swartz 1 (acquired on: 07/13/22 10:19:59)

Production	Potential	Casing Pressure	Producing
Current	0	14.1 psi (g)	Annular Gas Flow
Oil	0	Casing Pressure Buildup	0 Mscf/D
Water	0	-0.0 psi	% Liquid
Gas	0	1.00 min	100 %
IPR Method	Vogel	Gas/Liquid Interface Pressure	
PBHP/SBHP	0.0	15.3 psi (g)	
Production Efficiency		Liquid Level Depth	
Oil	40 deg API	2010.39 ft	
Water	1.05 Sp.Gr.H2O	Pump Intake Depth	
Gas	0.61 Sp.Gr.AIR	- * - ft	
Acoustic Velocity	1398.53 ft/s	Formation Depth	
		4731.00 ft	
Formation Submergence			
Total Gaseous Liquid Column HT (TV D)		2721 ft	
Equivalent Gas Free Liquid HT (TV D)		2721 ft	
Swartz 1 07132022			



Group: Indian Oil Well: Swartz 1 (acquired on: 07/13/22 10:19:59)



Acoustic Velocity: 1398.53 ft/s
Joints Per Second: 22.0588 ft
Depth to liquid level: 2010.39 ft
Automatic Collar Count: Yes

Joints counted: 39
Joints to liquid level: 63.4191
Filter Width: 19.7391
Time to 1st Collar: 0.272

22.73

Conservation Division
District Office No. 1
210 E. Frontview, Suite A
Dodge City, KS 67801



Phone: 620-682-7933
<http://kcc.ks.gov/>

Dwight D. Keen, Chair
Susan K. Duffy, Commissioner
Andrew J. French, Commissioner

Laura Kelly, Governor

September 15, 2022

Anthony Farrar
Indian Oil Co., Inc.
2507 SE US HWY 160
PO BOX 209
MEDICINE LODGE, KS 67104-0209

Re: Temporary Abandonment
API 15-007-21148-00-01
SWARTZ 1
NE/4 Sec.31-31S-11W
Barber County, Kansas

Dear Anthony Farrar:

"Your temporary abandonment (TA) application for the well listed above has been approved. In accordance with K.A.R. 82-3-111 the TA status of this well will expire 09/15/2023.

- * If you return this well to service or plug it, please notify the District Office.
- * If you sell this well you are required to file a Transfer of Operator form, T-1.
- * If the well will remain temporarily abandoned, you must submit a new TA application, CP-111, before 09/15/2023.

You may contact me at the number above if you have questions.

Very truly yours,

Michael Maier"