

KANSAS CORPORATION COMMISSION
OIL & GAS CONSERVATION DIVISION

TEMPORARY ABANDONMENT WELL APPLICATION

OPERATOR: License#
Name:
Address 1:
Address 2:
City: State: Zip:
Contact Person:
Phone:
Contact Person Email:
Field Contact Person:
Field Contact Person Phone:

API No. 15-
Spot Description:
Sec. Twp. S. R.
GPS Location: Lat: Long:
Datum: NAD27 NAD83 WGS84
County: Elevation:
Lease Name: Well #:
Well Type: Oil Gas OG WSW Other:
SWD Permit #: ENHR Permit #:
Gas Storage Permit #:
Spud Date: Date Shut-In:

Table with 7 columns: Conductor, Surface, Production, Intermediate, Liner, Tubing. Rows include Size, Setting Depth, Amount of Cement, Top of Cement, Bottom of Cement.

Casing Fluid Level from Surface: How Determined? Date:
Casing Squeeze(s): to w / sacks of cement, to w / sacks of cement. Date:
Do you have a valid Oil & Gas Lease? Yes No
Depth and Type: Junk in Hole at Tools in Hole at Casing Leaks: Yes No Depth of casing leak(s):
Type Completion: ALT. I ALT. II Depth of: DV Tool: w / sacks of cement Port Collar: w / sack of cement
Packer Type: Size: Inch Set at: Feet
Total Depth: Plug Back Depth: Plug Back Method:

Geological Data:

Table with 4 columns: Formation Name, Formation Top, Formation Base, Completion Information. Rows 1 and 2.

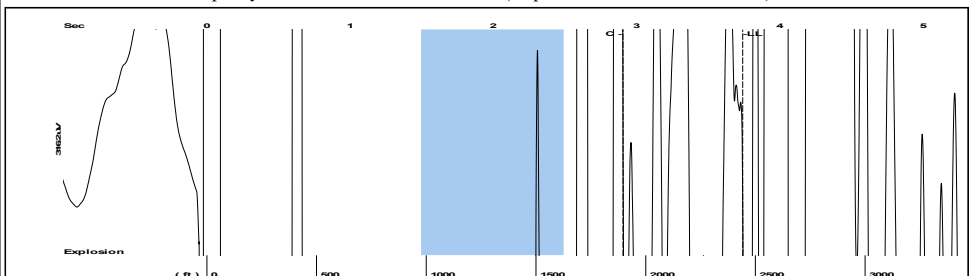
UNDER PENALTY OF PERJURY I HEREBY ATTEST THAT THE INFORMATION CONTAINED HEREIN IS TRUE AND CORRECT TO THE BEST OF MY KNOWLEDGE

Submitted Electronically

Do NOT Write in This Space - KCC USE ONLY
Date Tested: Results: Date Plugged: Date Repaired: Date Put Back in Service:
Review Completed by: Comments:
TA Approved: Yes Denied Date:

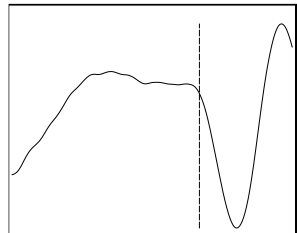
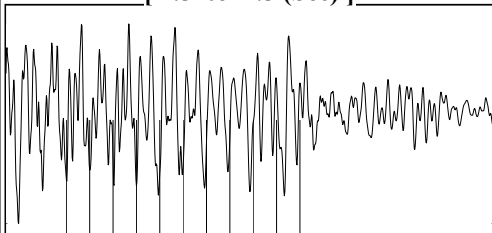
Mail to the Appropriate KCC Conservation Office:

Table with 2 columns: Office Address, Phone. Rows for District Office #1, #2, #3, #4.



Filter Type High Pass Automatic Collar Count Yes Time 3.74 sec
 Manual Acoustic Veloc 1320.83 ft/s Manual JTS/sec 20.8333 Joints 77.0355 Jts
 Depth 2442.03 ft

[1.5 to 2.5 (Sec)]

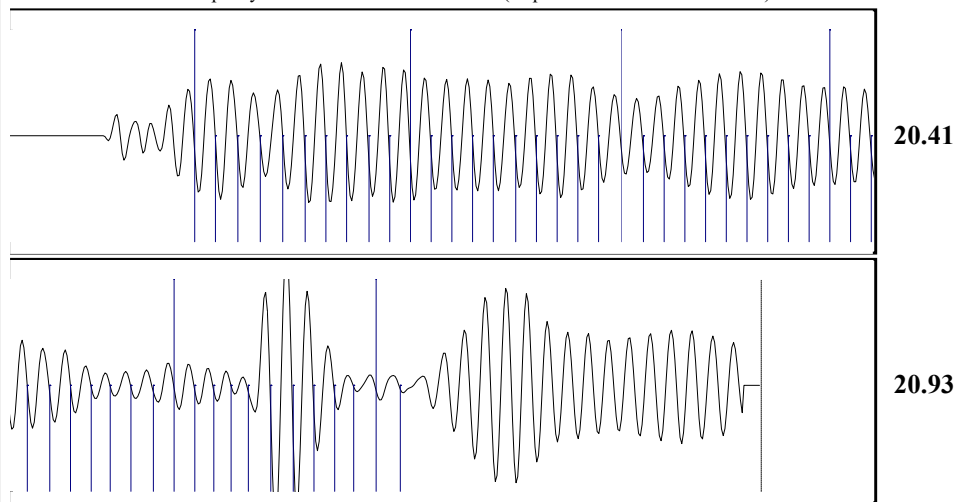


Analysis Method: Automatic



Change in Pressure 0.00 psi NONE
 Range 0 - ? psi
 Change in Time 0.00 min

Production	Potential	Casing Pressure		Producing
Current		0.0 psi (g)		Annular Gas Flow
Oil - * -	- * - BBL/D	Casing Pressure Buildup		- * - Mscf/D
Water - * -	- * - BBL/D	- * - psi		% Liquid
Gas - * -	- * - Mscf/D	- * - min		100 %
IPR Method	Vogel	Gas/Liquid Interface Pressure		
PBHP/SBHP	- * -	- * - psi (g)		
Production Efficiency	0.0	Liquid Level Depth		
Oil 40 deg.API		2442.03 ft		
Water 1.05 Sp.Gr.H2O		Pump Intake Depth		
Gas 0.70 Sp.Gr.AIR		- * - ft		
Acoustic Velocity	1305.9 ft/s	Formation Depth		
		2688.00 ft		
Formation Submergence		Pump Intake		
Total Gaseous Liquid Column HT (TVD)		- * - psi (g)		
Equivalent Gas Free Liquid HT (TVD)		Producing BHP		
		- * - psi (g)		
Acoustic Test		Static BHP		
		- * - psi (g)		



Acoustic Velocity	1305.9 ft/s	Joints counted	51
Joints Per Second	20.5977 jts/sec	Joints to liquid level	77.0355
Depth to liquid level	2442.03 ft	Filter Width	18.8333 22.8333
Automatic Collar Count	Yes	Time to 1st Collar	0.428 2.904

Conservation Division
District Office No. 1
210 E. Frontview, Suite A
Dodge City, KS 67801



Phone: 620-682-7933
<http://kcc.ks.gov/>

Dwight D. Keen, Chair
Susan K. Duffy, Commissioner
Andrew J. French, Commissioner

Laura Kelly, Governor

October 04, 2022

Octavio Morales
American Warrior, Inc.
PO BOX 399
GARDEN CITY, KS 67846-0399

Re: Temporary Abandonment
API 15-055-20481-00-00
MCGRAW 1
SE/4 Sec.09-26S-31W
Finney County, Kansas

Dear Octavio Morales:

"Your temporary abandonment (TA) application for the well listed above has been approved. In accordance with K.A.R. 82-3-111 the TA status of this well will expire 10/04/2023.

- * If you return this well to service or plug it, please notify the District Office.
- * If you sell this well you are required to file a Transfer of Operator form, T-1.
- * If the well will remain temporarily abandoned, you must submit a new TA application, CP-111, before 10/04/2023.

You may contact me at the number above if you have questions.

Very truly yours,

Michael Maier"