

KANSAS CORPORATION COMMISSION
OIL & GAS CONSERVATION DIVISION

TEMPORARY ABANDONMENT WELL APPLICATION

OPERATOR: License#
Name:
Address 1:
Address 2:
City: State: Zip:
Contact Person:
Phone:
Contact Person Email:
Field Contact Person:
Field Contact Person Phone:

API No. 15-
Spot Description:
Sec. Twp. S. R.
GPS Location: Lat: Long:
Datum: NAD27 NAD83 WGS84
County: Elevation:
Lease Name: Well #:
Well Type: Oil Gas OG WSW Other:
SWD Permit #: ENHR Permit #:
Gas Storage Permit #:
Spud Date: Date Shut-In:

Table with 7 columns: Conductor, Surface, Production, Intermediate, Liner, Tubing. Rows include Size, Setting Depth, Amount of Cement, Top of Cement, Bottom of Cement.

Casing Fluid Level from Surface: How Determined? Date:
Casing Squeeze(s): to w / sacks of cement, to w / sacks of cement. Date:
Do you have a valid Oil & Gas Lease? Yes No
Depth and Type: Junk in Hole at Tools in Hole at Casing Leaks: Yes No Depth of casing leak(s):
Type Completion: ALT. I ALT. II Depth of: DV Tool: w / sacks of cement Port Collar: w / sack of cement
Packer Type: Size: Inch Set at: Feet
Total Depth: Plug Back Depth: Plug Back Method:

Geological Date:

Table with 4 columns: Formation Name, Formation Top, Formation Base, Completion Information. Rows 1 and 2.

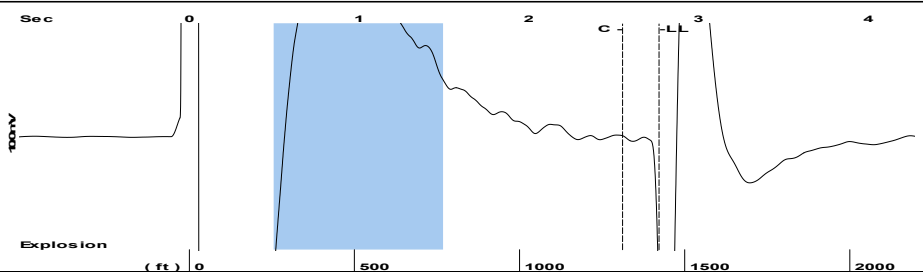
UNDER PENALTY OF PERJURY I HEREBY ATTEST THAT THE INFORMATION CONTAINED HEREIN IS TRUE AND CORRECT TO THE BEST OF MY KNOWLEDGE

Submitted Electronically

Do NOT Write in This Space - KCC USE ONLY
Date Tested: Results: Date Plugged: Date Repaired: Date Put Back in Service:
Review Completed by: Comments:
TA Approved: Yes Denied Date:

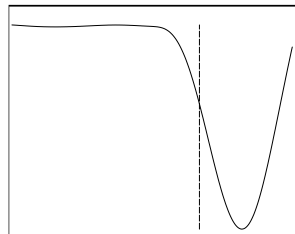
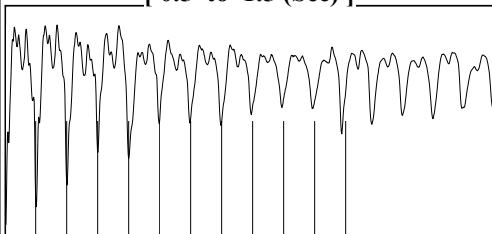
Mail to the Appropriate KCC Conservation Office:

Map of Kansas with 4 numbered districts and corresponding office addresses and phone numbers.

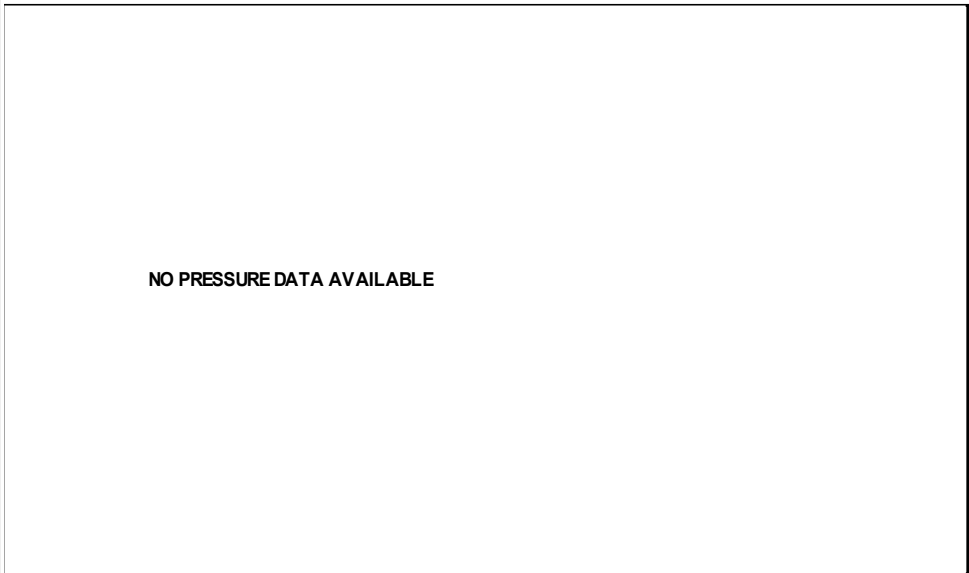


Filter Type High Pass Automatic Collar Count Yes Time 2.767 sec
 Manual Acoustic Veloc 1004.71 ft/s Manual JTS/sec 15.6986 Joints 44.4353 Jts
 Depth 1421.93 ft

[0.5 to 1.5 (Sec)]



Analysis Method: Automatic



Change in Pressure 0.00 psi PT16854
 Range 0 - ? psi
 Change in Time 0.00 min

Production Current Potential
 Oil - * - BBL/D
 Water - * - BBL/D
 Gas - * - Mscf/D

IPR Method Vogel
 PBHP/SBHP - * -
 Production Efficiency 0.0

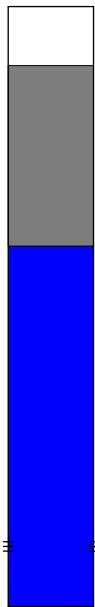
Oil 40 deg.API
 Water 1.05 Sp.Gr.H2O
 Gas 0.94 Sp.Gr.AIR

Acoustic Velocity 1027.78 ft/s

Formation Submergence
 Total Gaseous Liquid Column HT (TVD) 2378 ft
 Equivalent Gas Free Liquid HT (TVD) 2378 ft

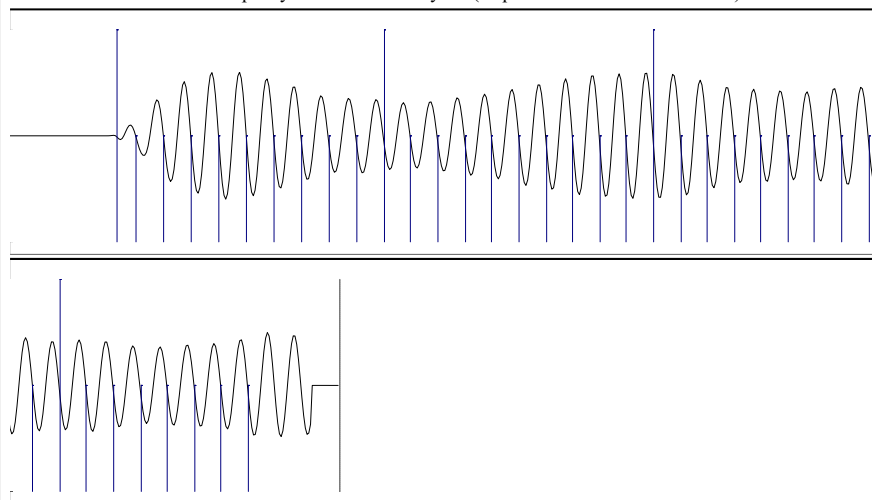
10-3-22

Casing Pressure 0.3 psi (g)
 Casing Pressure Buildup - * - psi
 - * - min
 Gas/Liquid Interface Pressure 1.0 psi (g)
 Liquid Level Depth 1421.93 ft
 Pump Intake Depth - * - ft
 Formation Depth 3800.00 ft



Producing
 Annular Gas Flow 0 Mscf/D
 % Liquid 100 %

Pump Intake - * - psi (g)
 Producing BHP 1082.2 psi (g)
 Static BHP - * - psi (g)



Acoustic Velocity 1027.78 ft/s Joints counted 37
 Joints Per Second 16.059 jts/sec Joints to liquid level 44.4353
 Depth to liquid level 1421.93 ft Filter Width 13.6986 17.6986
 Automatic Collar Count Yes Time to 1st Collar 0.248 2.552

Conservation Division
District Office No. 4
2301 E. 13th Street
Hays, KS 67601-2651



Phone: 785-261-6250
Fax: 785-625-0564
<http://kcc.ks.gov/>

Dwight D. Keen, Chair
Susan K. Duffy, Commissioner
Andrew J. French, Commissioner

Laura Kelly, Governor

October 06, 2022

Zach Patterson
Patterson Energy LLC
PO BOX 400
HAYS, KS 67601-0400

Re: Temporary Abandonment
API 15-147-00612-00-00
RAY B 3
NW/4 Sec.32-05S-20W
Phillips County, Kansas

Dear Zach Patterson:

"Your temporary abandonment (TA) application for the well listed above has been approved. In accordance with K.A.R. 82-3-111 the TA status of this well will expire 10/06/2023.

- * If you return this well to service or plug it, please notify the District Office.
- * If you sell this well you are required to file a Transfer of Operator form, T-1.
- * If the well will remain temporarily abandoned, you must submit a new TA application, CP-111, before 10/06/2023.

You may contact me at the number above if you have questions.

Very truly yours,

RICHARD WILLIAMS"