

KANSAS CORPORATION COMMISSION
OIL & GAS CONSERVATION DIVISION

TEMPORARY ABANDONMENT WELL APPLICATION

OPERATOR: License#
Name:
Address 1:
Address 2:
City: State: Zip:
Contact Person:
Phone:
Contact Person Email:
Field Contact Person:
Field Contact Person Phone:

API No. 15-
Spot Description:
Sec. Twp. S. R.
GPS Location: Lat: Long:
Datum: NAD27 NAD83 WGS84
County: Elevation:
Lease Name: Well #:
Well Type: Oil Gas OG WSW Other:
SWD Permit #: ENHR Permit #:
Gas Storage Permit #:
Spud Date: Date Shut-In:

Table with 7 columns: Conductor, Surface, Production, Intermediate, Liner, Tubing. Rows include Size, Setting Depth, Amount of Cement, Top of Cement, Bottom of Cement.

Casing Fluid Level from Surface: How Determined? Date:
Casing Squeeze(s): to w / sacks of cement, to w / sacks of cement. Date:
Do you have a valid Oil & Gas Lease? Yes No
Depth and Type: Junk in Hole at Tools in Hole at Casing Leaks: Yes No Depth of casing leak(s):
Type Completion: ALT. I ALT. II Depth of: DV Tool: w / sacks of cement Port Collar: w / sack of cement
Packer Type: Size: Inch Set at: Feet
Total Depth: Plug Back Depth: Plug Back Method:

Geological Data:

Table with 4 columns: Formation Name, Formation Top, Formation Base, Completion Information. Rows 1 and 2.

UNDER PENALTY OF PERJURY I HEREBY ATTEST THAT THE INFORMATION CONTAINED HEREIN IS TRUE AND CORRECT TO THE BEST OF MY KNOWLEDGE

Submitted Electronically

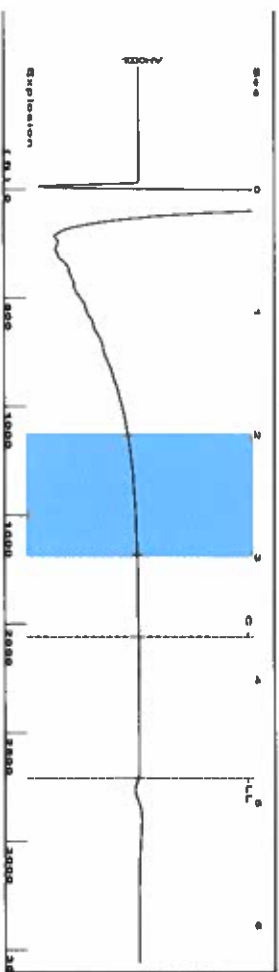
Do NOT Write in This Space - KCC USE ONLY
Date Tested: Results: Date Plugged: Date Repaired: Date Put Back in Service:
Review Completed by: Comments:
TA Approved: Yes Denied Date:

Mail to the Appropriate KCC Conservation Office:

Map of Kansas with 4 numbered districts. Table with 3 columns: District Office Name, Address, Phone Number.

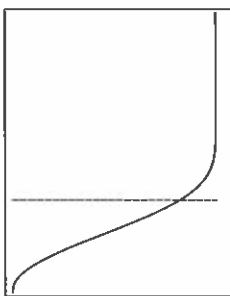
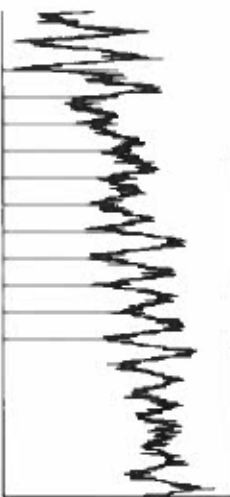
Shot at 300# DW

Group: Hugton TAV Well: McClure A-4 (acquired on: 09/16/22 09:17:04)



Filter Type High Pass Automatic Collar Count Yes
 Manual Acoustic Velokl 146.47 f/s Manual JTS/sec 18.0832
 Time 4.801 sec
 Joints 85.427 J/s
 Depth 2708.04 ft

12.0 to 3.0 (Sec) 1



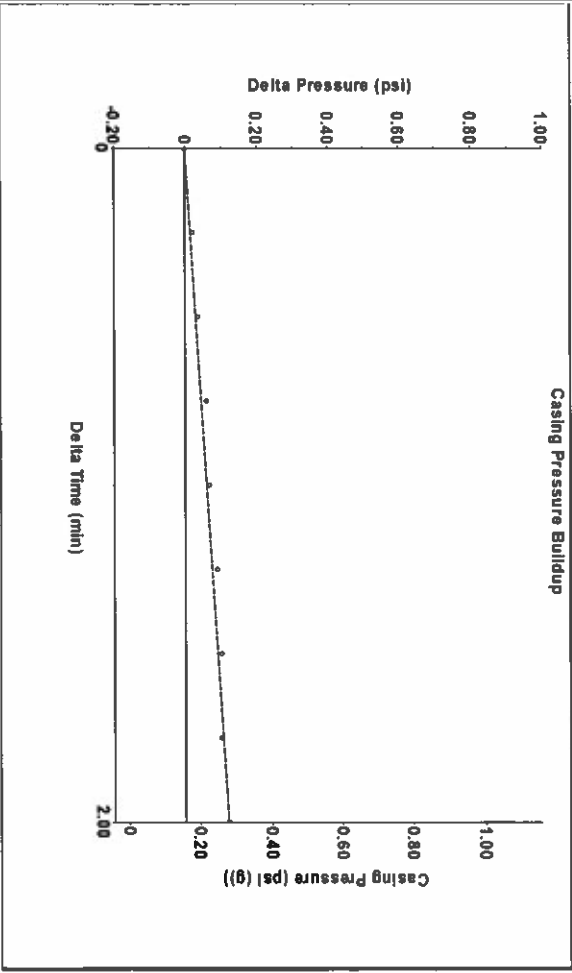
Analysis Method: Automatic

Group: Hugton TAV Well: McClure A-4 (acquired on: 09/16/22 09:17:04)

Production	Potential	Casing Pressure	Static
Current	Oil -*- BBL/D	0.2 psi (g)	Oil Column Height
Water -*-	Water -*- BBL/D	0.1 psi	MD 0 ft
Gas -*-	Gas -*- Mscf/D	2.00 min	
IPR Method	Vogel	Gas/Liquid Interface Pressure	
PBHP/SBHP	Production Efficiency	1.4 psi (g)	
Oil 40 deg API	Liquid Level Depth		Water Column Height
Water 1.05 Sp Gr H2O	2708.04 ft		MD 1719 ft
Gas 0.86 Sp Gr AIR	Pump Intake Depth		
Acoustic Velocity	2908.00 ft		
	Formation Depth		
	4427.00 ft		

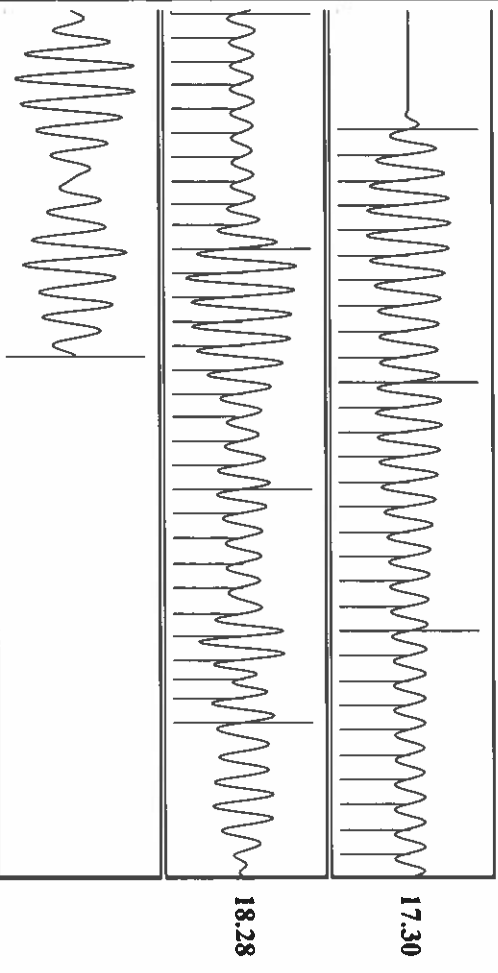


Group: Hugton TAV Well: McClure A-4 (acquired on: 09/16/22 09:17:04)



Change in Pressure 0.12 psi PT 10411
 Change in Time 2.00 min Range 0 - 2 psi

Group: Hugton TAV Well: McClure A-4 (acquired on: 09/16/22 09:17:04)



Acoustic Velocity 1128.11 f/s Joints counted 60
 Joints Per Second 17.7936 J/s/sec Joints to liquid level 20.0832
 Depth to liquid level 2708.04 ft Filter Width 16.0832
 Automatic Collar Count Yes Time to 1st Collar 0.276 3.648

October 10, 2022

Katherine McClurkan
Merit Energy Company, LLC
13727 Noel Road, Suite 1200
Dallas, TX 75240

Re: Temporary Abandonment
API 15-189-22262-01-02
McClure A 4
NE/4 Sec.16-32S-38W
Stevens County, Kansas

Dear Katherine McClurkan:

"Your temporary abandonment (TA) application for the well listed above has been approved. In accordance with K.A.R. 82-3-111 the TA status of this well will expire 10/10/2023.

- * If you return this well to service or plug it, please notify the District Office.
- * If you sell this well you are required to file a Transfer of Operator form, T-1.
- * If the well will remain temporarily abandoned, you must submit a new TA application, CP-111, before 10/10/2023.

You may contact me at the number above if you have questions.

Very truly yours,

Michael Maier"