

KANSAS CORPORATION COMMISSION
OIL & GAS CONSERVATION DIVISION

TEMPORARY ABANDONMENT WELL APPLICATION

OPERATOR: License#
Name:
Address 1:
Address 2:
City: State: Zip:
Contact Person:
Phone:
Contact Person Email:
Field Contact Person:
Field Contact Person Phone:

API No. 15-
Spot Description:
Sec. Twp. S. R.
GPS Location: Lat: Long:
Datum: NAD27 NAD83 WGS84
County: Elevation:
Lease Name: Well #:
Well Type: Oil Gas OG WSW Other:
SWD Permit #: ENHR Permit #:
Gas Storage Permit #:
Spud Date: Date Shut-In:

Table with 7 columns: Conductor, Surface, Production, Intermediate, Liner, Tubing. Rows include Size, Setting Depth, Amount of Cement, Top of Cement, Bottom of Cement.

Casing Fluid Level from Surface: How Determined? Date:
Casing Squeeze(s): to w / sacks of cement, to w / sacks of cement. Date:
Do you have a valid Oil & Gas Lease? Yes No
Depth and Type: Junk in Hole at Tools in Hole at Casing Leaks: Yes No Depth of casing leak(s):
Type Completion: ALT. I ALT. II Depth of: DV Tool: w / sacks of cement Port Collar: w / sack of cement
Packer Type: Size: Inch Set at: Feet
Total Depth: Plug Back Depth: Plug Back Method:

Geological Date:

Table with 4 columns: Formation Name, Formation Top, Formation Base, Completion Information. Rows 1 and 2.

UNDER PENALTY OF PERJURY I HEREBY ATTEST THAT THE INFORMATION CONTAINED HEREIN IS TRUE AND CORRECT TO THE BEST OF MY KNOWLEDGE

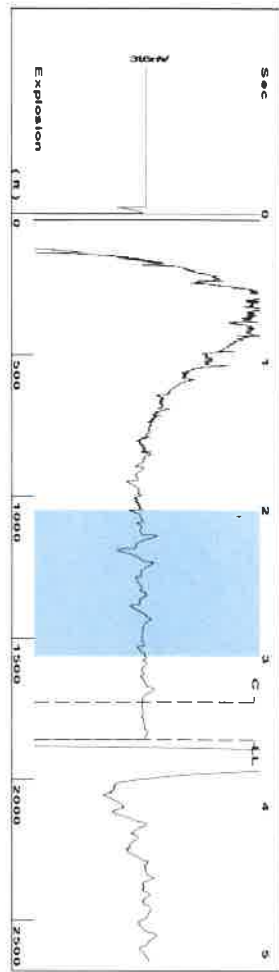
Submitted Electronically

Do NOT Write in This Space - KCC USE ONLY
Date Tested: Results: Date Plugged: Date Repaired: Date Put Back in Service:
Review Completed by: Comments:
TA Approved: Yes Denied Date:

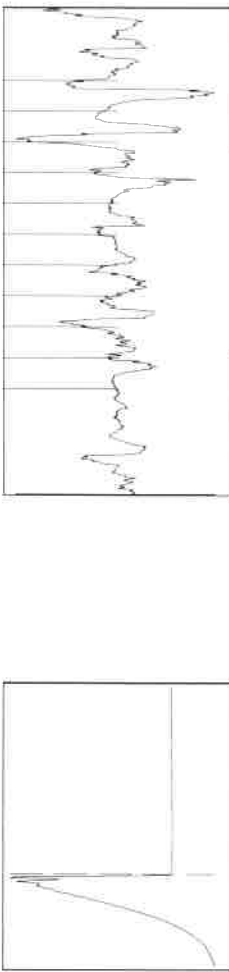
Mail to the Appropriate KCC Conservation Office:

Table with 2 columns: Office Address, Phone. Rows for District Office #1, #2, #3, #4.



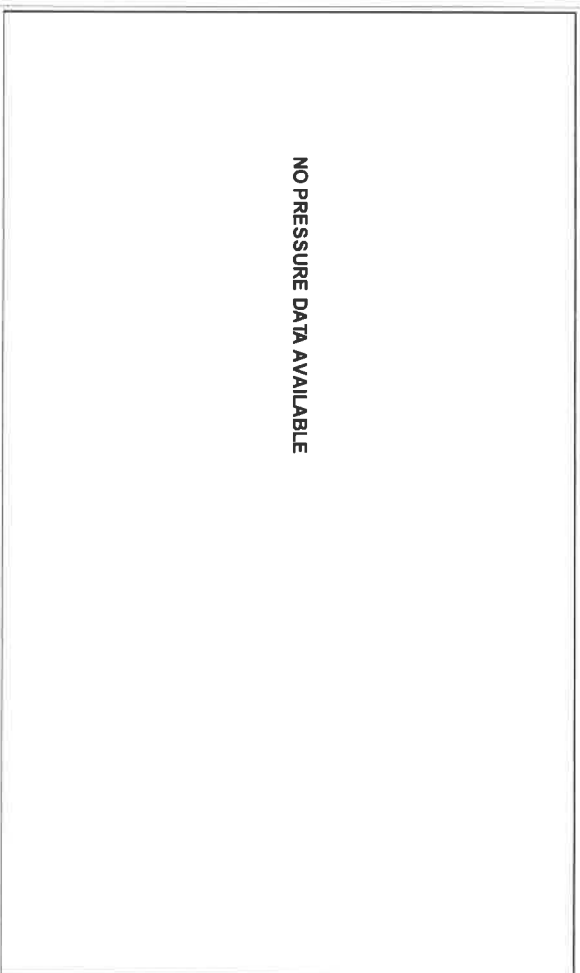


Filter Type High Pass Automatic Collar Count Yes
 Manual Acoustic Velo 1001 58 ft/s Manual JTS/sec 15 7978
 Time 3.548 sec
 Joints 58 6054 Jts
 Depth 1857.79 ft

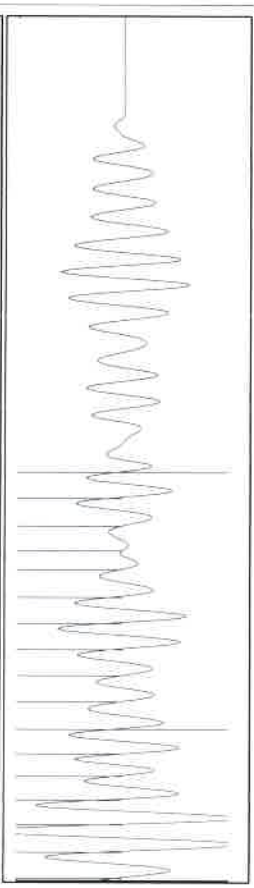


Analysis Method: Automatic

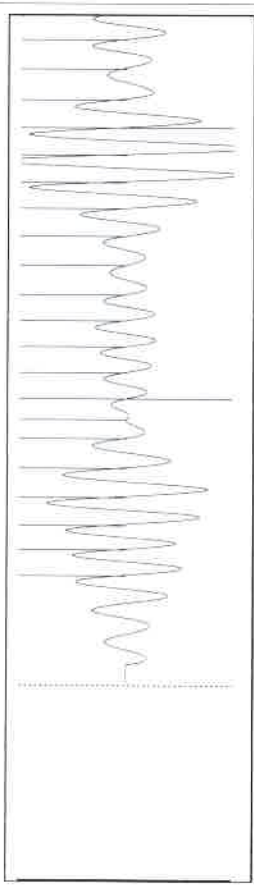
Production Current	Potential	Casing Pressure	Static
Oil -*- BBL/D	Oil -*- BBL/D	0.6 psi (g)	Oil Column Height
Water -*- BBL/D	Water -*- BBL/D	-0.6 psi	MD 0 ft
Gas -*- Mscf/D	Gas -*- Mscf/D	0.75 min	
IPR Method Vogel	Production Efficiency 0.0	Gas/Liquid Interface Pressure 1.5 psi (g)	Water Column Height
Oil 40 deg API		Liquid Level Depth 1857.79 ft	MD -*- ft
Water 1.05 Sp Gr-H2O		Pump Intake Depth -*- ft	
Gas 0.93 Sp Gr-AIR		Formation Depth 2936.00 ft	
Acoustic Velocity 1047.23 ft/s			Static BHP 491.7 psi (g)



Change in Pressure 0.00 psi PT 19224
 Change in Time 0.00 min Range 0 - ? psi



17.09



16.10

Acoustic Velocity	1047.23 ft/s	Joints counted	37
Joints Per Second	16.5179 Jts/sec	Joints to Liquid level	58 6054
Depth to liquid level	1857.79 ft	Filter Width	13.7978
Automatic Collar Count	Yes	Time to 1st Collar	1.056

October 12, 2022

BRIAN J MCCOY
Edison Operating Company LLC
8100 E. 22ND ST. N., BLDG 1900
WICHITA, KS 67226-2319

Re: Temporary Abandonment
API 15-159-22852-00-00
WESSELER 1-34
NE/4 Sec.34-18S-10W
Rice County, Kansas

Dear BRIAN J MCCOY:

"Your temporary abandonment (TA) application for the well listed above has been approved. In accordance with K.A.R. 82-3-111 the TA status of this well will expire 10/12/2023.

- * If you return this well to service or plug it, please notify the District Office.
- * If you sell this well you are required to file a Transfer of Operator form, T-1.
- * If the well will remain temporarily abandoned, you must submit a new TA application, CP-111, before 10/12/2023.

You may contact me at the number above if you have questions.

Very truly yours,

Keith Karlin, ECRS"