

KANSAS CORPORATION COMMISSION
OIL & GAS CONSERVATION DIVISION

TEMPORARY ABANDONMENT WELL APPLICATION

OPERATOR: License#
Name:
Address 1:
Address 2:
City: State: Zip:
Contact Person:
Phone:
Contact Person Email:
Field Contact Person:
Field Contact Person Phone:

API No. 15-
Spot Description:
Sec. Twp. S. R.
GPS Location: Lat: Long:
Datum: NAD27 NAD83 WGS84
County: Elevation:
Lease Name: Well #:
Well Type: Oil Gas OG WSW Other:
SWD Permit #: ENHR Permit #:
Gas Storage Permit #:
Spud Date: Date Shut-In:

Table with 7 columns: Conductor, Surface, Production, Intermediate, Liner, Tubing. Rows include Size, Setting Depth, Amount of Cement, Top of Cement, Bottom of Cement.

Casing Fluid Level from Surface: How Determined? Date:
Casing Squeeze(s): to w / sacks of cement, to w / sacks of cement. Date:
Do you have a valid Oil & Gas Lease? Yes No
Depth and Type: Junk in Hole at Tools in Hole at Casing Leaks: Yes No Depth of casing leak(s):
Type Completion: ALT. I ALT. II Depth of: DV Tool: w / sacks of cement Port Collar: w / sack of cement
Packer Type: Size: Inch Set at: Feet
Total Depth: Plug Back Depth: Plug Back Method:

Geological Data:

Table with 4 columns: Formation Name, Formation Top, Formation Base, Completion Information. Rows 1 and 2.

UNDER PENALTY OF PERJURY I HEREBY ATTEST THAT THE INFORMATION CONTAINED HEREIN IS TRUE AND CORRECT TO THE BEST OF MY KNOWLEDGE

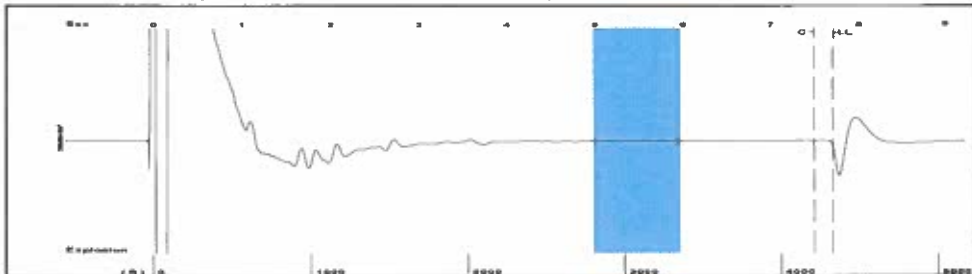
Submitted Electronically

Do NOT Write in This Space - KCC USE ONLY
Date Tested: Results: Date Plugged: Date Repaired: Date Put Back in Service:
Review Completed by: Comments:
TA Approved: Yes Denied Date:

Mail to the Appropriate KCC Conservation Office:

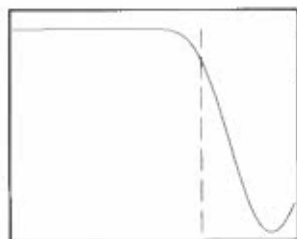
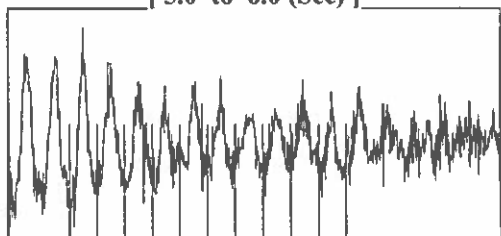
Table with 3 columns: District Office, Address, Phone. Rows for District Office #1, #2, #3, #4.

Group: TA'D WELLS Well: BLOUT 2-5 (acquired on: 09/21/22 09:52:34 )



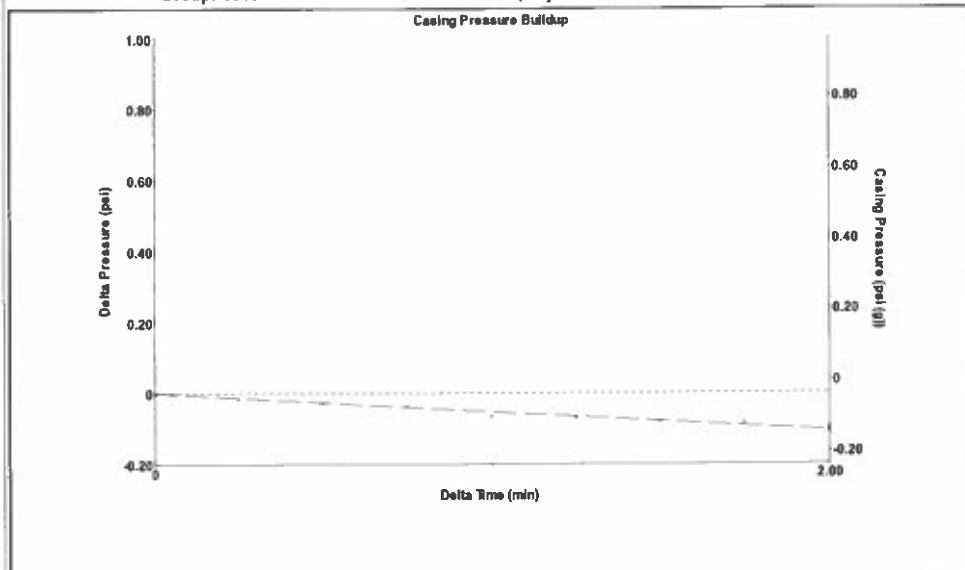
Filter Type High Pass Automatic Collar Count Yes Time 7.718 sec  
 Manual Acoustic Velo 1128.11 ft/s Manual JTS/sec 17.7936 Joints 136.451 Jts  
 Depth 4325.49 ft

[ 5.0 to 6.0 (Sec) ]



Analysis Method: Automatic

Group: TA'D WELLS Well: BLOUT 2-5 (acquired on: 09/21/22 09:52:34 )



Change in Pressure -0.11 psi PT10411  
 Change in Time 2.00 min Range 0 - 2 psi

Group: TA'D WELLS Well: BLOUT 2-5 (acquired on: 09/21/22 09:52:34 )

<b>Production</b>	<b>Potential</b>	<b>Casing Pressure</b>
Oil - * -	- * - BBL/D	-0.0 psi (g)
Water - * -	- * - BBL/D	Casing Pressure Buildup
Gas - * -	- * - Mscf/D	-0.106 psi
		2.00 min
<b>IPR Method</b>	<b>Vogel</b>	<b>Gas/Liquid Interface Pressure</b>
PBHP/SBHP	- * -	1.9 psi (g)
Production Efficiency	0.0	
<b>Oil</b> 40 deg.API		<b>Liquid Level Depth</b>
<b>Water</b> 1.05 Sp.Gr.H2O		4325.49 ft
<b>Gas</b> 0.87 Sp.Gr.AIR		<b>Pump Intake Depth</b>
		4700.00 ft
<b>Acoustic Velocity</b> 1120.88 ft/s		<b>Formation Depth</b>
		4772.00 ft

**Producing**

Annular Gas Flow 0 Mscf/D

% Liquid 100 %

**Pump Intake** 129.6 psi (g)

**Producing BHP** 162.4 psi (g)

**Static BHP** - \* - psi (g)



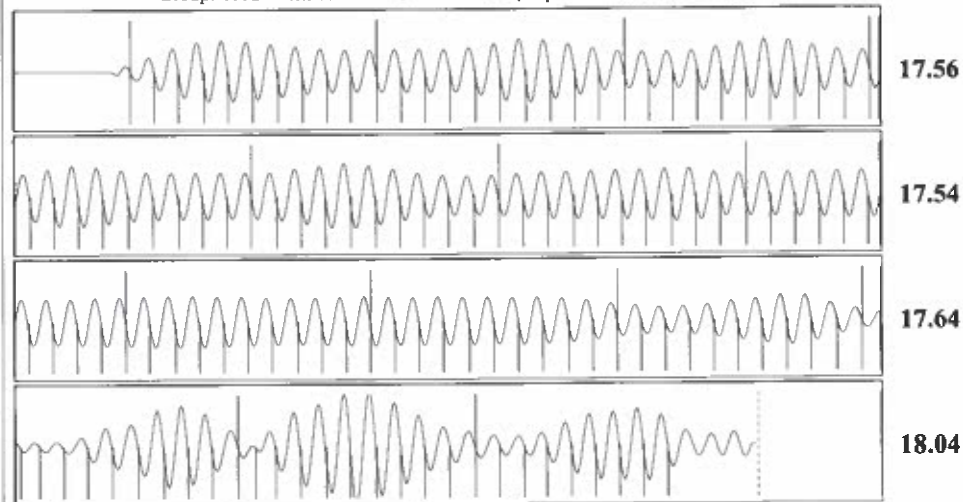
**Formation Submergence** 375 ft

**Total Gaseous Liquid Column HT (TVD)** 375 ft

**Equivalent Gas Free Liquid HT (TVD)**

**Acoustic Test**

Group: TA'D WELLS Well: BLOUT 2-5 (acquired on: 09/21/22 09:52:34 )



<b>Acoustic Velocity</b> 1120.88 ft/s	<b>Joints counted</b> 128
<b>Joints Per Second</b> 17.6796 jts/sec	<b>Joints to liquid level</b> 136.451
<b>Depth to liquid level</b> 4325.49 ft	<b>Filter Width</b> 15.7936
<b>Automatic Collar Count</b> Yes	<b>Time to 1st Collar</b> 0.268

19.7936  
7.508

Conservation Division  
District Office No. 1  
210 E. Frontview, Suite A  
Dodge City, KS 67801



Phone: 620-682-7933  
<http://kcc.ks.gov/>

Dwight D. Keen, Chair  
Susan K. Duffy, Commissioner  
Andrew J. French, Commissioner

Laura Kelly, Governor

October 12, 2022

Katherine McClurkan  
Merit Energy Company, LLC  
13727 Noel Road, Suite 1200  
Dallas, TX 75240

Re: Temporary Abandonment  
API 15-129-21664-00-00  
Blout 2-5  
SE/4 Sec.05-33S-42W  
Morton County, Kansas

Dear Katherine McClurkan:

"Your temporary abandonment (TA) application for the well listed above has been approved. In accordance with K.A.R. 82-3-111 the TA status of this well will expire 10/12/2023.

- \* If you return this well to service or plug it, please notify the District Office.
- \* If you sell this well you are required to file a Transfer of Operator form, T-1.
- \* If the well will remain temporarily abandoned, you must submit a new TA application, CP-111, before 10/12/2023.

You may contact me at the number above if you have questions.

Very truly yours,

Michael Maier"