

KANSAS CORPORATION COMMISSION
OIL & GAS CONSERVATION DIVISION

TEMPORARY ABANDONMENT WELL APPLICATION

OPERATOR: License#
Name:
Address 1:
Address 2:
City: State: Zip:
Contact Person:
Phone:
Contact Person Email:
Field Contact Person:
Field Contact Person Phone:

API No. 15-
Spot Description:
Sec. Twp. S. R.
GPS Location: Lat: Long:
Datum: NAD27 NAD83 WGS84
County: Elevation:
Lease Name: Well #:
Well Type: Oil Gas OG WSW Other:
SWD Permit #: ENHR Permit #:
Gas Storage Permit #:
Spud Date: Date Shut-In:

Table with 7 columns: Conductor, Surface, Production, Intermediate, Liner, Tubing. Rows include Size, Setting Depth, Amount of Cement, Top of Cement, Bottom of Cement.

Casing Fluid Level from Surface: How Determined? Date:
Casing Squeeze(s): to w / sacks of cement, to w / sacks of cement. Date:
Do you have a valid Oil & Gas Lease? Yes No
Depth and Type: Junk in Hole at Tools in Hole at Casing Leaks: Yes No Depth of casing leak(s):
Type Completion: ALT. I ALT. II Depth of: DV Tool: w / sacks of cement Port Collar: w / sack of cement
Packer Type: Size: Inch Set at: Feet
Total Depth: Plug Back Depth: Plug Back Method:

Geological Data:

Table with 4 columns: Formation Name, Formation Top, Formation Base, Completion Information. Rows 1 and 2.

UNDER PENALTY OF PERJURY I HEREBY ATTEST THAT THE INFORMATION CONTAINED HEREIN IS TRUE AND CORRECT TO THE BEST OF MY KNOWLEDGE

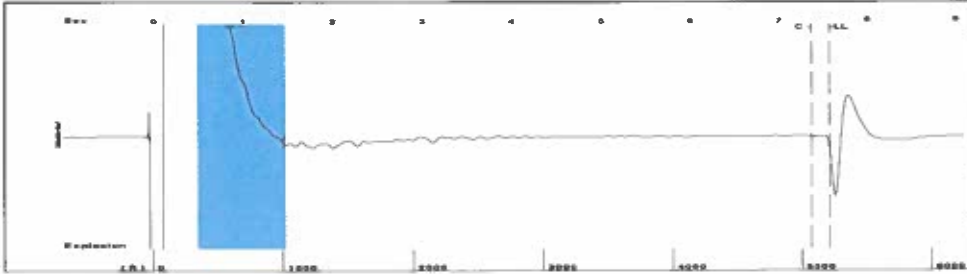
Submitted Electronically

Do NOT Write in This Space - KCC USE ONLY
Date Tested: Results: Date Plugged: Date Repaired: Date Put Back in Service:
Review Completed by: Comments:
TA Approved: Yes Denied Date:

Mail to the Appropriate KCC Conservation Office:

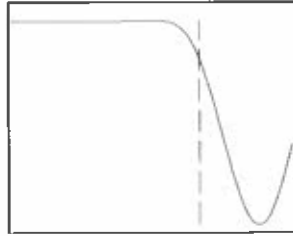
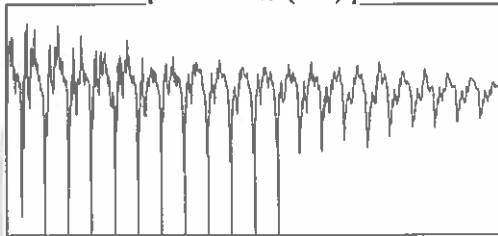
Table with 3 columns: District Office #, Address, Phone. Rows 1-4.

Group: TA'D WELLS Well: Kansas Univ A-3 (acquired on: 09/21/22 11:48:33)



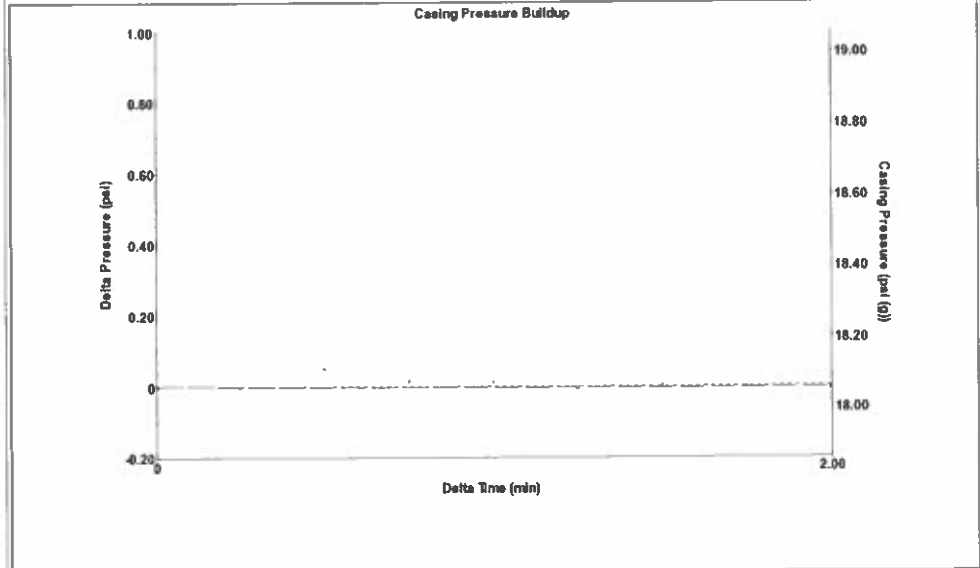
Filter Type High Pass Automatic Collar Count Yes Time 7.582 sec
 Manual Acoustic Velo 1340.38 ft/s Manual JTS/sec 21.1416 Joints 164.455 Jts
 Depth 5213.21 ft

[0.5 to 1.5 (Sec)]



Analysis Method: Automatic

Group: TA'D WELLS Well: Kansas Univ A-3 (acquired on: 09/21/22 11:48:33)



Change in Pressure -0.00 psi PT10411
 Change in Time 2.00 min Range 0 - ? psi

Group: TA'D WELLS Well: Kansas Univ A-3 (acquired on: 09/21/22 11:48:33)

Production	Potential	Casing Pressure
Oil - * -	- * - BBL/D	18.1 psi (g)
Water - * -	- * - BBL/D	Casing Pressure Buildup
Gas - * -	- * - Mscf/D	-0.005 psi
		2.00 min
IPR Method	Vogel	Gas/Liquid Interface Pressure
PBHP/SBHP	- * -	21.9 psi (g)
Production Efficiency	0.0	
Oil 40 deg.API		Liquid Level Depth
Water 1.05 Sp.Gr.H2O		5213.21 ft
Gas 0.64 Sp.Gr.AIR		Pump Intake Depth
		5926.00 ft
Acoustic Velocity	1375.15 ft/s	Formation Depth
		6193.00 ft



Producing

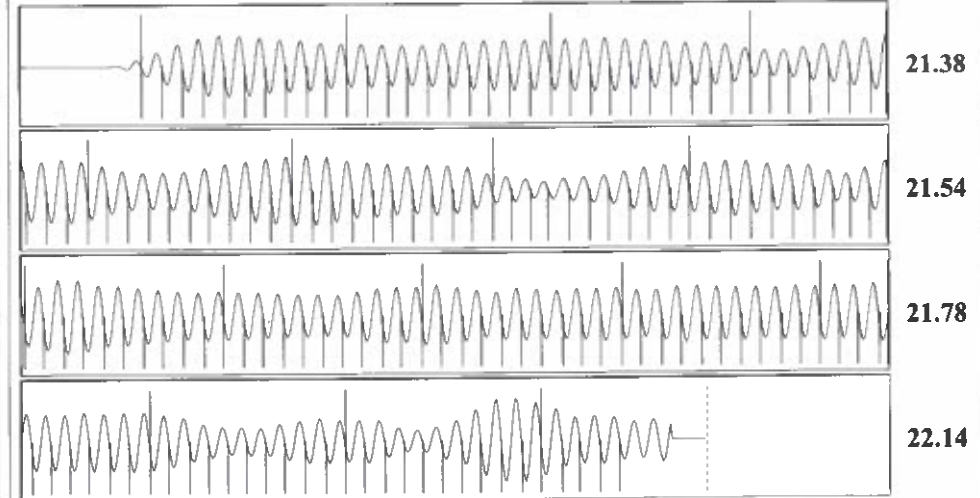
Annular Gas Flow 0 Mscf/D
 % Liquid 100 %

Pump Intake
 261.1 psi (g)
Producing BHP
 382.5 psi (g)
Static BHP
 - * - psi (g)

Formation Submergence
 Total Gaseous Liquid Column HT (TVD) 713 ft
 Equivalent Gas Free Liquid HT (TVD) 713 ft

Acoustic Test

Group: TA'D WELLS Well: Kansas Univ A-3 (acquired on: 09/21/22 11:48:33)



Acoustic Velocity	1375.15 ft/s	Joints counted	154
Joints Per Second	21.6901 jts/sec	Joints to liquid level	164.455
Depth to liquid level	5213.21 ft	Filter Width	19.1416
Automatic Collar Count	Yes	Time to 1st Collar	0.28
			23.1416
			7.38

October 12, 2022

Katherine McClurkan
Merit Energy Company, LLC
13727 Noel Road, Suite 1200
Dallas, TX 75240-7362

Re: Temporary Abandonment
API 15-129-20977-00-01
Kansas University A 3
SE/4 Sec.06-32S-39W
Morton County, Kansas

Dear Katherine McClurkan:

"Your temporary abandonment (TA) application for the well listed above has been approved. In accordance with K.A.R. 82-3-111 the TA status of this well will expire 10/12/2023.

- * If you return this well to service or plug it, please notify the District Office.
- * If you sell this well you are required to file a Transfer of Operator form, T-1.
- * If the well will remain temporarily abandoned, you must submit a new TA application, CP-111, before 10/12/2023.

You may contact me at the number above if you have questions.

Very truly yours,

Michael Maier"