

KANSAS CORPORATION COMMISSION
OIL & GAS CONSERVATION DIVISION

TEMPORARY ABANDONMENT WELL APPLICATION

OPERATOR: License#
Name:
Address 1:
Address 2:
City: State: Zip:
Contact Person:
Phone:
Contact Person Email:
Field Contact Person:
Field Contact Person Phone:

API No. 15-
Spot Description:
Sec. Twp. S. R.
GPS Location: Lat: Long:
Datum: NAD27 NAD83 WGS84
County: Elevation:
Lease Name: Well #:
Well Type: Oil Gas OG WSW Other:
SWD Permit #: ENHR Permit #:
Gas Storage Permit #:
Spud Date: Date Shut-In:

Table with 7 columns: Conductor, Surface, Production, Intermediate, Liner, Tubing. Rows include Size, Setting Depth, Amount of Cement, Top of Cement, Bottom of Cement.

Casing Fluid Level from Surface: How Determined? Date:
Casing Squeeze(s): to w / sacks of cement, to w / sacks of cement. Date:
Do you have a valid Oil & Gas Lease? Yes No
Depth and Type: Junk in Hole at Tools in Hole at Casing Leaks: Yes No Depth of casing leak(s):
Type Completion: ALT. I ALT. II Depth of: DV Tool: w / sacks of cement Port Collar: w / sack of cement
Packer Type: Size: Inch Set at: Feet
Total Depth: Plug Back Depth: Plug Back Method:

Geological Data:

Table with 4 columns: Formation Name, Formation Top, Formation Base, Completion Information. Rows 1 and 2.

UNDER PENALTY OF PERJURY I HEREBY ATTEST THAT THE INFORMATION CONTAINED HEREIN IS TRUE AND CORRECT TO THE BEST OF MY KNOWLEDGE

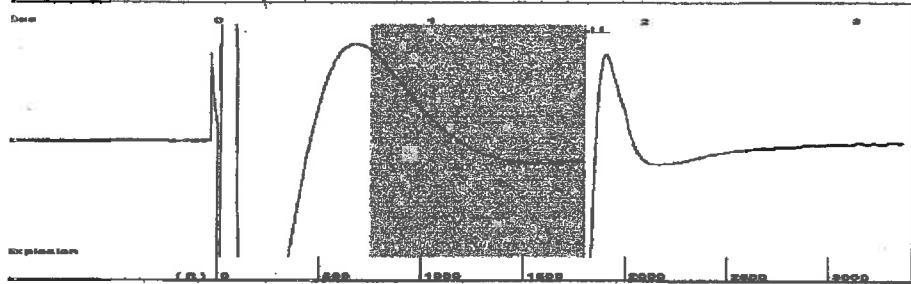
Submitted Electronically

Do NOT Write in This Space - KCC USE ONLY
Date Tested: Results: Date Plugged: Date Repaired: Date Put Back in Service:
Review Completed by: Comments:
TA Approved: Yes Denied Date:

Mail to the Appropriate KCC Conservation Office:

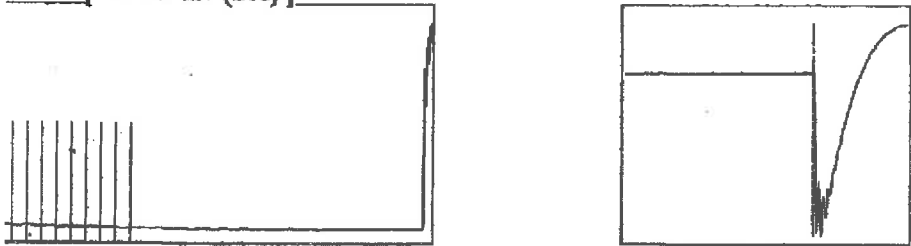
Table with 2 columns: Office Address, Phone. Rows for District Office #1, #2, #3, #4.

Group: Radium Well: Binford Campbell 1-31 (acquired on: 10/17/22 12:58:05)



Type High Pass Automatic Collar Count Yes Time 1.722 sec  
 Acoustic Velocity 2085.53 ft/s Manual JTS/sec 32.8947 Joints 56.6447 Jts  
 Depth 1795.64 ft

[ 0.7 to 1.7 (Sec) ]

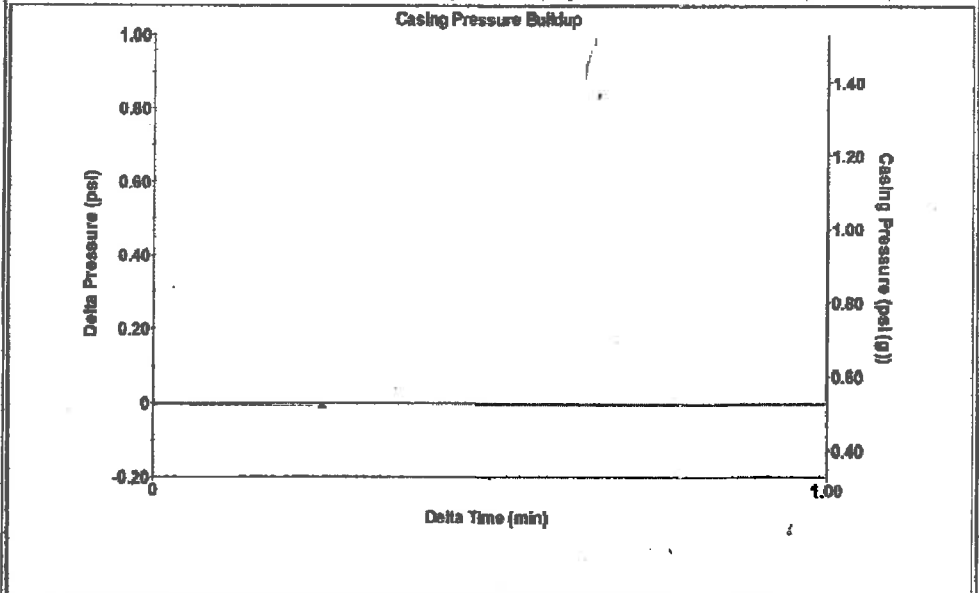


Analysis Method: Automatic

Group: Radium Well: Binford Campbell 1-31 (acquired on: 10/17/22 12:58:05)

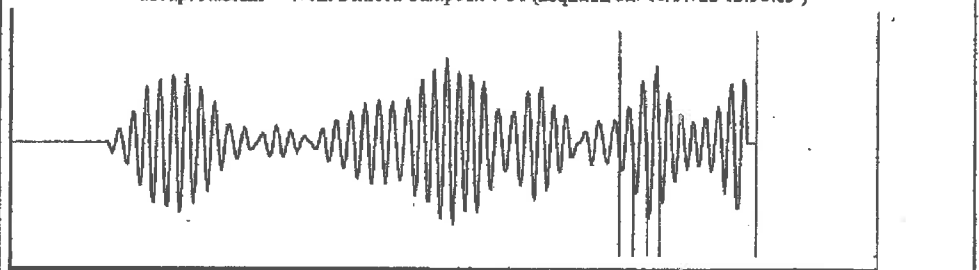
Action Current Potential BBL/D Mscf/D Method P/SBHP Action Efficiency 40 deg API 1.05 Sp.Gr.H2O 0.55 Sp.Gr.AIR Static Velocity 2085.53 ft/s Action Submergence Gaseous Liquid Column HT (TVD) 2020 ft Gaseous Free Liquid HT (TVD) 2020 ft Static Test	Casing Pressure 0.5 psi (g) Casing Pressure Buildup -0.008 psi 0.25 min Gas/Liquid Interface Pressure 1.1 psi (g) Liquid Level Depth 1795.64 ft Pump Intake Depth 3816.00 ft Formation Depth 3816.00 ft Pump Intake 672.0 psi (g) Producing BHP 672.0 psi (g) Static BHP -*- psi (g)	Producing Annular Gas Flow 0 Mscf/D % Liquid 100 %	
--	--	--	--

Group: Radium Well: Binford Campbell 1-31 (acquired on: 10/17/22 12:58:05)



Change in Pressure -0.01 psi PT13440  
 Change in Time 0.25 min Range 0 - ? psi

Group: Radium Well: Binford Campbell 1-31 (acquired on: 10/17/22 12:58:05)



Acoustic Velocity	-*- ft/s	Joints counted	3
Joints Per Second	-*- jts/sec	Joints to liquid level	-*-
Depth to liquid level	-*- ft	Filter Width	30.8947 34.8947
Automatic Collar Count	Yes	Time to 1st Collar	-*-

Conservation Division  
District Office No. 4  
2301 E. 13th Street  
Hays, KS 67601-2651



Phone: 785-261-6250  
Fax: 785-625-0564  
<http://kcc.ks.gov/>

Dwight D. Keen, Chair  
Susan K. Duffy, Commissioner  
Andrew J. French, Commissioner

Laura Kelly, Governor

October 18, 2022

Loveness Mpanje  
F. G. Holl Company L.L.C.  
9431 E CENTRAL STE 100  
WICHITA, KS 67206-2563

Re: Temporary Abandonment  
API 15-009-25831-00-00  
BINFORD/CAMPBELL 1-31  
NW/4 Sec.31-20S-15W  
Barton County, Kansas

Dear Loveness Mpanje:

"Your temporary abandonment (TA) application for the well listed above has been approved. In accordance with K.A.R. 82-3-111 the TA status of this well will expire 09/05/2023.

- \* If you return this well to service or plug it, please notify the District Office.
- \* If you sell this well you are required to file a Transfer of Operator form, T-1.
- \* If the well will remain temporarily abandoned, you must submit a new TA application, CP-111, before 09/05/2023.

You may contact me at the number above if you have questions.

Very truly yours,

RICHARD WILLIAMS"