

KANSAS CORPORATION COMMISSION
OIL & GAS CONSERVATION DIVISION

TEMPORARY ABANDONMENT WELL APPLICATION

OPERATOR: License#
Name:
Address 1:
Address 2:
City: State: Zip:
Contact Person:
Phone:
Contact Person Email:
Field Contact Person:
Field Contact Person Phone:

API No. 15-
Spot Description:
Sec. Twp. S. R.
GPS Location: Lat: Long:
Datum: NAD27 NAD83 WGS84
County: Elevation:
Lease Name: Well #:
Well Type: Oil Gas OG WSW Other:
SWD Permit #: ENHR Permit #:
Gas Storage Permit #:
Spud Date: Date Shut-In:

Table with 7 columns: Conductor, Surface, Production, Intermediate, Liner, Tubing. Rows include Size, Setting Depth, Amount of Cement, Top of Cement, Bottom of Cement.

Casing Fluid Level from Surface: How Determined? Date:
Casing Squeeze(s): to w / sacks of cement, to w / sacks of cement. Date:
Do you have a valid Oil & Gas Lease? Yes No
Depth and Type: Junk in Hole at Tools in Hole at Casing Leaks: Yes No Depth of casing leak(s):
Type Completion: ALT. I ALT. II Depth of: DV Tool: w / sacks of cement Port Collar: w / sack of cement
Packer Type: Size: Inch Set at: Feet
Total Depth: Plug Back Depth: Plug Back Method:

Geological Date:

Table with 4 columns: Formation Name, Formation Top, Formation Base, Completion Information. Rows 1 and 2.

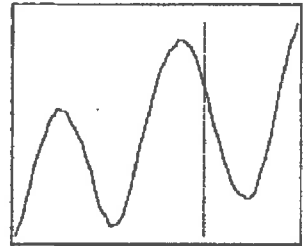
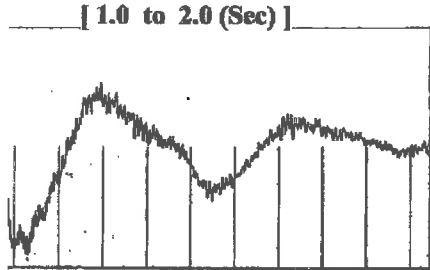
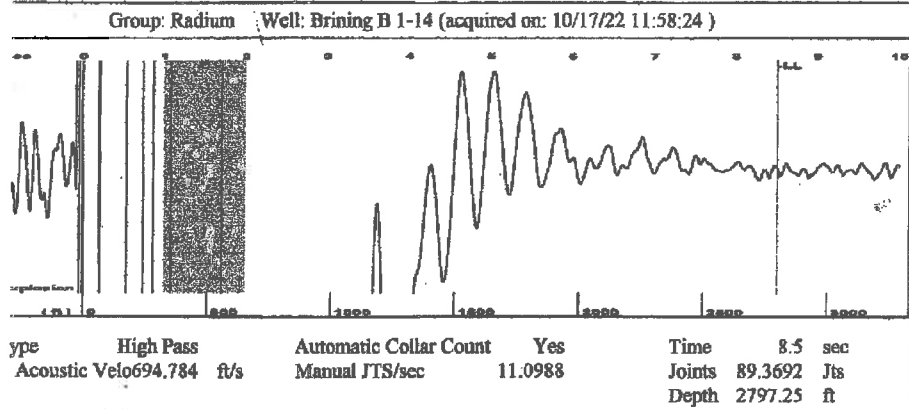
UNDER PENALTY OF PERJURY I HEREBY ATTEST THAT THE INFORMATION CONTAINED HEREIN IS TRUE AND CORRECT TO THE BEST OF MY KNOWLEDGE

Submitted Electronically

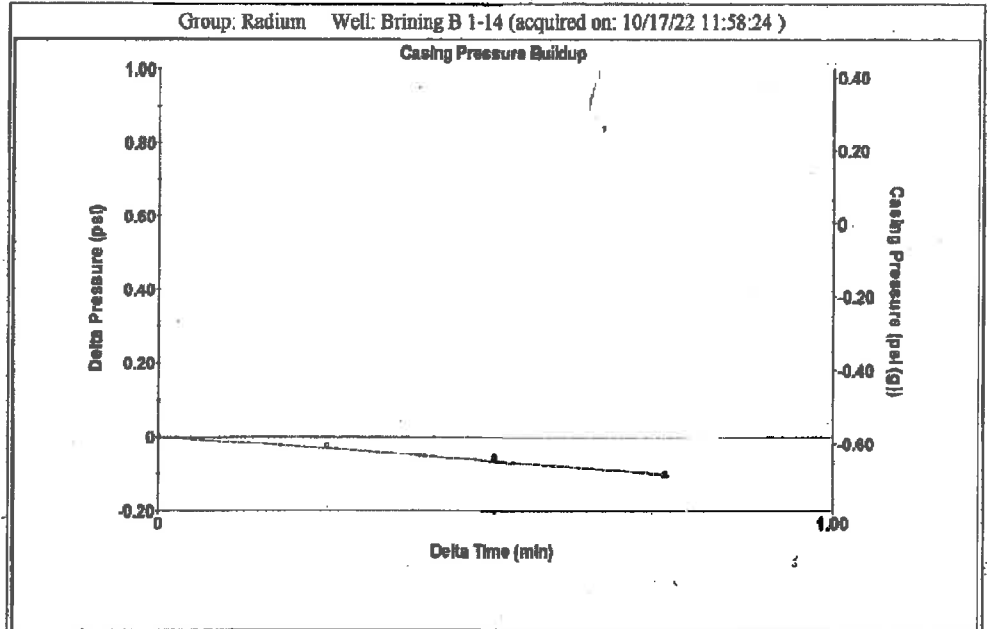
Do NOT Write in This Space - KCC USE ONLY
Date Tested: Results: Date Plugged: Date Repaired: Date Put Back in Service:
Review Completed by: Comments:
TA Approved: Yes Denied Date:

Mail to the Appropriate KCC Conservation Office:

Map of Kansas with 4 numbered districts. Table with 3 columns: District Office Name, Address, Phone Number.



Analysis Method: Automatic



Group: Radium Well: Brining B 1-14 (acquired on: 10/17/22 11:58:24)

Production - * - BBL/D - * - BBL/D - * - Mscf/D	Potential - * - - * - - * -	Casing Pressure -0.6 psi (g) Casing Pressure Buildup -0.100 psi 0.75 min Gas/Liquid Interface Pressure 1.3 psi (g)		Producing Annular Gas Flow 0 Mscf/D % Liquid 100 %
Method 40 deg.API 1.05 Sp.Gr.H2O 1.30 Sp.Gr.AIR	Vogel - * - - * - - * -	Liquid Level Depth 2797.25 ft Pump Intake Depth 3602.00 ft Formation Depth 3378.00 ft		Pump Intake 275.9 psi (g) Producing BHP 200.7 psi (g) Static BHP - * - psi (g)
Production Efficiency 0.0				
Production Submergence Gaseous Liquid Column HT (TVD) 805 ft Gaseous Free Liquid HT (TVD) 805 ft				
Production Test				

Group: Radium Well: Brining B 1-14 (acquired on: 10/17/22 11:58:24)

Acoustic Velocity	658.178 ft/s	Joints counted	9
Joints Per Second	10.514 jts/sec	Joints to liquid level	89.3692
Depth to liquid level	2797.25 ft	Filter Width	9.09878 13.0988
Automatic Collar Count	Yes	Time to 1st Collar	0.84 1.696

Conservation Division
District Office No. 4
2301 E. 13th Street
Hays, KS 67601-2651



Phone: 785-261-6250
Fax: 785-625-0564
<http://kcc.ks.gov/>

Dwight D. Keen, Chair
Susan K. Duffy, Commissioner
Andrew J. French, Commissioner

Laura Kelly, Governor

October 18, 2022

Loveness Mpanje
F. G. Holl Company L.L.C.
9431 E CENTRAL STE 100
WICHITA, KS 67206-2563

Re: Temporary Abandonment
API 15-009-25015-00-00
BRINING B 1-14
NW/4 Sec.14-20S-14W
Barton County, Kansas

Dear Loveness Mpanje:

"Your temporary abandonment (TA) application for the well listed above has been approved. In accordance with K.A.R. 82-3-111 the TA status of this well will expire 10/18/2023.

- * If you return this well to service or plug it, please notify the District Office.
- * If you sell this well you are required to file a Transfer of Operator form, T-1.
- * If the well will remain temporarily abandoned, you must submit a new TA application, CP-111, before 10/18/2023.

You may contact me at the number above if you have questions.

Very truly yours,

RICHARD WILLIAMS"