

KANSAS CORPORATION COMMISSION
OIL & GAS CONSERVATION DIVISION

Form must be Typed
Form must be signed

TEMPORARY ABANDONMENT WELL APPLICATION

All blanks must be complete

OPERATOR: License#
Name:
Address 1:
Address 2:
City: State: Zip:
Contact Person:
Phone:
Contact Person Email:
Field Contact Person:
Field Contact Person Phone:

API No. 15-
Spot Description:
Sec. Twp. S. R.
GPS Location: Lat: Long:
Datum: NAD27 NAD83 WGS84
County: Elevation:
Lease Name: Well #:
Well Type: Oil Gas OG WSW Other:
SWD Permit #: ENHR Permit #:
Gas Storage Permit #:
Spud Date: Date Shut-In:

Table with 7 columns: Conductor, Surface, Production, Intermediate, Liner, Tubing. Rows include Size, Setting Depth, Amount of Cement, Top of Cement, Bottom of Cement.

Casing Fluid Level from Surface: How Determined? Date:
Casing Squeeze(s): to w / sacks of cement, to w / sacks of cement. Date:
Do you have a valid Oil & Gas Lease? Yes No
Depth and Type: Junk in Hole at Tools in Hole at Casing Leaks: Yes No Depth of casing leak(s):
Type Completion: ALT. I ALT. II Depth of: DV Tool: w / sacks of cement Port Collar: w / sack of cement
Packer Type: Size: Inch Set at: Feet
Total Depth: Plug Back Depth: Plug Back Method:

Geological Data:

Table with 4 columns: Formation Name, Formation Top, Formation Base, Completion Information. Rows 1 and 2.

UNDER PENALTY OF PERJURY I HEREBY ATTEST THAT THE INFORMATION CONTAINED HEREIN IS TRUE AND CORRECT TO THE BEST OF MY KNOWLEDGE

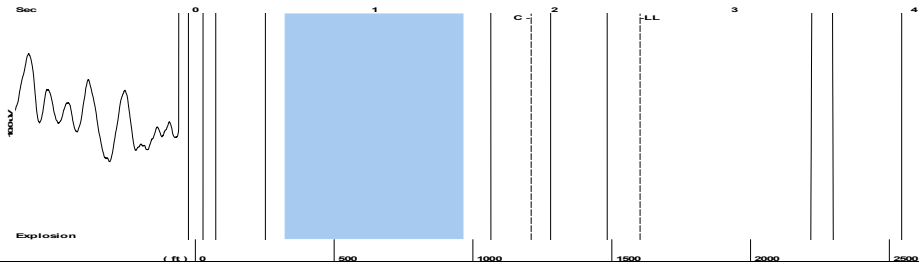
Submitted Electronically

Do NOT Write in This Space - KCC USE ONLY
Date Tested: Results: Date Plugged: Date Repaired: Date Put Back in Service:
Review Completed by: Comments:
TA Approved: Yes Denied Date:

Mail to the Appropriate KCC Conservation Office:

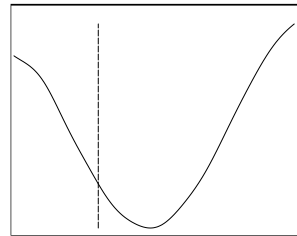
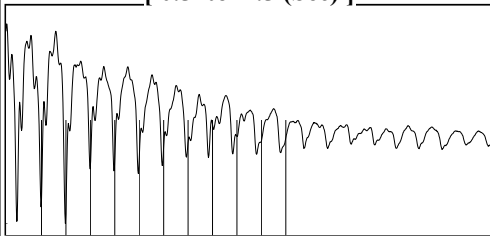
Table with 3 columns: District Office #, Address, Phone. Rows 1-4.

Group: MyWells Well: NIELSEN UNIT-2 (acquired on: 10/10/22 13:11:02)



Filter Type High Pass Automatic Collar Count Yes Time 2.474 sec
 Manual Acoustic Veloc 1262.95 ft/s Manual JTS/sec 19.9203 Joints 50.521 Jts
 Depth 1601.52 ft

[0.5 to 1.5 (Sec)]



Analysis Method: Automatic

Group: MyWells Well: NIELSEN UNIT-2 (acquired on: 10/10/22 13:11:02)

NO PRESSURE DATA AVAILABLE

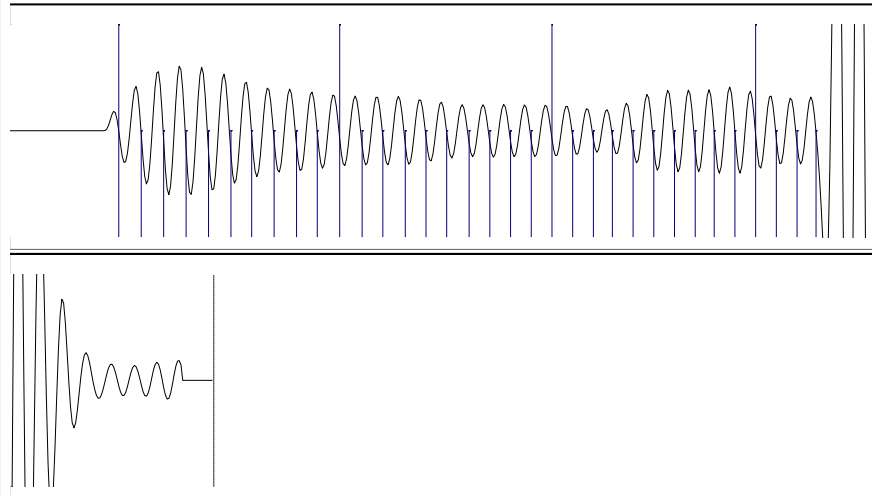
Change in Pressure 0.00 psi NONE
 Range 0 - ? psi
 Change in Time 0.00 min

Group: MyWells Well: NIELSEN UNIT-2 (acquired on: 10/10/22 13:11:02)

| | | | |
|--------------------------------------|---------------------|--------------------------------------|-------------------------|
| Production | Potential | Casing Pressure | Producing |
| Current | | -14.7 psi (g) | |
| Oil - * - | - * - BBL/D | Casing Pressure Buildup | Annular Gas Flow |
| Water - * - | - * - BBL/D | - * - psi | - * - Mscf/D |
| Gas - * - | - * - Mscf/D | - * - min | % Liquid |
| | | Gas/Liquid Interface Pressure | 100 % |
| | | - * - psi (g) | |
| IPR Method | Vogel | Liquid Level Depth | Pump Intake |
| PBHP/SBHP | - * - | 1601.52 ft | - * - psi (g) |
| Production Efficiency | 0.0 | Pump Intake Depth | Producing BHP |
| | | - * - ft | - * - psi (g) |
| Oil 40 deg.API | | Formation Depth | Static BHP |
| Water 1.05 Sp.Gr.H2O | | 4975.00 ft | - * - psi (g) |
| Gas 0.70 Sp.Gr.AIR | | | |
| Acoustic Velocity | 1294.68 ft/s | | |
| Formation Submergence | | | |
| Total Gaseous Liquid Column HT (TVD) | - * - ft | | |
| Equivalent Gas Free Liquid HT (TVD) | - * - ft | | |
| Acoustic Test | | | |



Group: MyWells Well: NIELSEN UNIT-2 (acquired on: 10/10/22 13:11:02)



| | | | |
|------------------------|-----------------|------------------------|-----------------|
| Acoustic Velocity | 1294.68 ft/s | Joints counted | 33 |
| Joints Per Second | 20.4208 jts/sec | Joints to liquid level | 50.521 |
| Depth to liquid level | 1601.52 ft | Filter Width | 17.9203 21.9203 |
| Automatic Collar Count | Yes | Time to 1st Collar | 0.252 1.868 |

Conservation Division
District Office No. 1
210 E. Frontview, Suite A
Dodge City, KS 67801



Phone: 620-682-7933
<http://kcc.ks.gov/>

Dwight D. Keen, Chair
Susan K. Duffy, Commissioner
Andrew J. French, Commissioner

Laura Kelly, Governor

October 18, 2022

Jose Reyes
Mid-Continent Resources, Inc.
PO BOX 399
GARDEN CITY, KS 67846-0399

Re: Temporary Abandonment
API 15-033-20848-00-00
NIELSEN UNIT 2
NE/4 Sec.01-31S-17W
Comanche County, Kansas

Dear Jose Reyes:

"Your temporary abandonment (TA) application for the well listed above has been approved. In accordance with K.A.R. 82-3-111 the TA status of this well will expire 10/18/2023.

- * If you return this well to service or plug it, please notify the District Office.
- * If you sell this well you are required to file a Transfer of Operator form, T-1.
- * If the well will remain temporarily abandoned, you must submit a new TA application, CP-111, before 10/18/2023.

You may contact me at the number above if you have questions.

Very truly yours,

Michael Maier"