

KANSAS CORPORATION COMMISSION
OIL & GAS CONSERVATION DIVISION

TEMPORARY ABANDONMENT WELL APPLICATION

OPERATOR: License#
Name:
Address 1:
Address 2:
City: State: Zip:
Contact Person:
Phone:
Contact Person Email:
Field Contact Person:
Field Contact Person Phone:

API No. 15-
Spot Description:
Sec. Twp. S. R.
feet from N / S Line of Section
feet from E / W Line of Section
GPS Location: Lat: , Long:
Datum: NAD27 NAD83 WGS84
County: Elevation: GL KB
Lease Name: Well #:
Well Type: (check one) Oil Gas OG WSW Other:
SWD Permit #: ENHR Permit #:
Gas Storage Permit #:
Spud Date: Date Shut-In:

Table with 7 columns: Conductor, Surface, Production, Intermediate, Liner, Tubing. Rows include Size, Setting Depth, Amount of Cement, Top of Cement, Bottom of Cement.

Casing Fluid Level from Surface: How Determined? Date:
Casing Squeeze(s): to w / sacks of cement, to w / sacks of cement. Date:
Do you have a valid Oil & Gas Lease? Yes No
Depth and Type: Junk in Hole at Tools in Hole at Casing Leaks: Yes No Depth of casing leak(s):
Type Completion: ALT. I ALT. II Depth of: DV Tool: w / sacks of cement Port Collar: w / sack of cement
Packer Type: Size: Inch Set at: Feet
Total Depth: Plug Back Depth: Plug Back Method:

Geological Data:

Table with 4 columns: Formation Name, Formation Top, Formation Base, Completion Information. Rows 1 and 2.

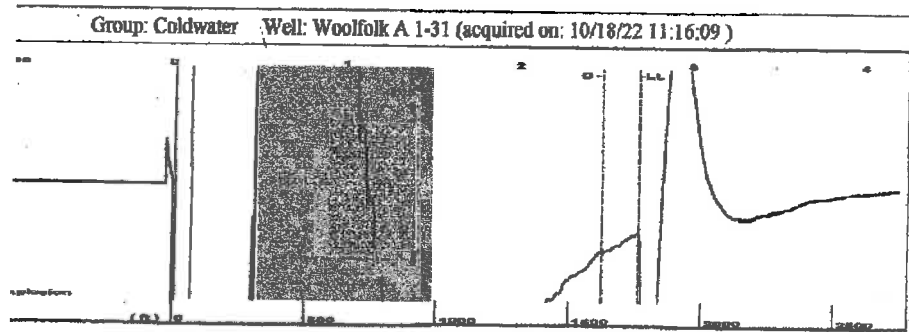
UNDER PENALTY OF PERJURY I HEREBY ATTEST THAT THE INFORMATION CONTAINED HEREIN IS TRUE AND CORRECT TO THE BEST OF MY KNOWLEDGE

Submitted Electronically

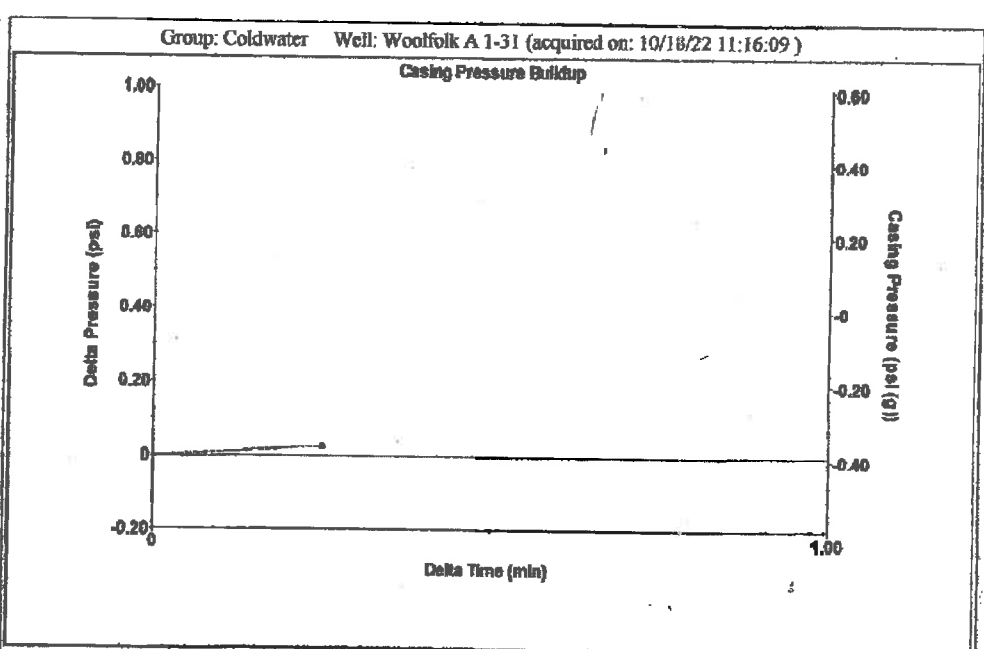
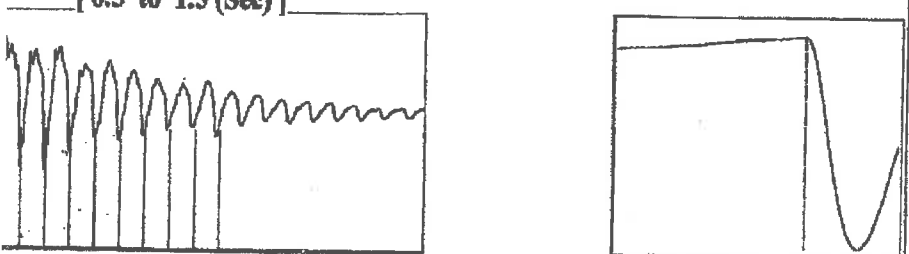
Do NOT Write in This Space - KCC USE ONLY
Date Tested: Results: Date Plugged: Date Repaired: Date Put Back in Service:
Review Completed by: Comments:
TA Approved: Yes Denied Date:

Mail to the Appropriate KCC Conservation Office:

Table with 3 columns: District Office, Address, Phone. Rows for District Office #1, #2, #3, #4.



Type: High Pass
 Acoustic Velocity: 1273.73 ft/s
 Automatic Collar Count: Yes
 Manual JTS/sec: 19.6078
 Time: 2.695 sec
 Joints: 54.2375 Jts
 Depth: 1761.63 ft

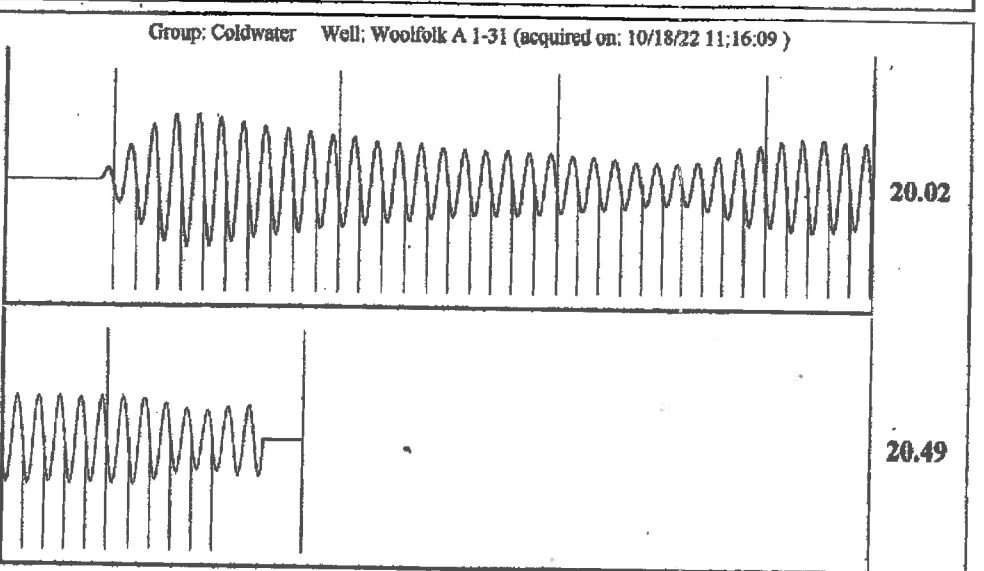


Change in Pressure: 0.02 psi
 Change in Time: 0.25 min
 PT13440
 Range: 0 - 7 psi

Analysis Method: Automatic

Group: Coldwater Well: Woolfolk A 1-31 (acquired on: 10/18/22 11:16:09)

Production Current Potential - * - BBL/D - * - BBL/D - * - Mscf/D Method %SBHP Production Efficiency 40 deg API 1.05 Sp.Gr.H2O 0.68 Sp.Gr.AIR Static Velocity 1307.33 ft/s Production Submergence Gaseous Liquid Column HT (TVD) 3458 ft Gas Free Liquid HT (TVD) 3211 ft Static Test	Casing Pressure -0.4 psi (g) Casing Pressure Buildup 0.023 psi 0.25 min Gas/Liquid Interface Pressure 0.2 psi (g) Liquid Level Depth 1761.63 ft Pump Intake Depth 5220.00 ft Formation Depth 5293.00 ft Pump Intake 1056.5 psi (g) Producing BHP 1088.1 psi (g) Static BHP - * - psi (g)	Producing Annular Gas Flow 1 Macf/D % Liquid 93 %
---	--	---



Acoustic Velocity	1307.33 ft/s	Joints counted	45
Joints Per Second	20.1252 jts/sec	Joints to liquid level	54.2375
Depth to liquid level	1761.63 ft	Filter Width	17.6078 21.6078
Automatic Collar Count	Yes	Time to 1st Collar	0.248 2.484

October 19, 2022

Loveness Mpanje
F. G. Holl Company L.L.C.
9431 E CENTRAL STE 100
WICHITA, KS 67206-2563

Re: Temporary Abandonment
API 15-033-21587-00-00
WOOLFOLK 'A' 1-31
SE/4 Sec.31-34S-19W
Comanche County, Kansas

Dear Loveness Mpanje:

"Your temporary abandonment (TA) application for the well listed above has been approved. In accordance with K.A.R. 82-3-111 the TA status of this well will expire 10/19/2023.

- * If you return this well to service or plug it, please notify the District Office.
- * If you sell this well you are required to file a Transfer of Operator form, T-1.
- * If the well will remain temporarily abandoned, you must submit a new TA application, CP-111, before 10/19/2023.

You may contact me at the number above if you have questions.

Very truly yours,

Michael Maier"