

KANSAS CORPORATION COMMISSION
OIL & GAS CONSERVATION DIVISION

TEMPORARY ABANDONMENT WELL APPLICATION

OPERATOR: License#
Name:
Address 1:
Address 2:
City: State: Zip:
Contact Person:
Phone:
Contact Person Email:
Field Contact Person:
Field Contact Person Phone:

API No. 15-
Spot Description:
Sec. Twp. S. R.
GPS Location: Lat, Long
Datum: NAD27, NAD83, WGS84
County: Elevation:
Lease Name: Well #:
Well Type: Oil, Gas, OG, WSW, Other
SWD Permit #: ENHR Permit #:
Gas Storage Permit #:
Spud Date: Date Shut-In:

Table with 7 columns: Conductor, Surface, Production, Intermediate, Liner, Tubing. Rows include Size, Setting Depth, Amount of Cement, Top of Cement, Bottom of Cement.

Casing Fluid Level from Surface: How Determined? Date:
Casing Squeeze(s): to w / sacks of cement, to w / sacks of cement. Date:
Do you have a valid Oil & Gas Lease? Yes No
Depth and Type: Junk in Hole at Tools in Hole at Casing Leaks: Yes No Depth of casing leak(s):
Type Completion: ALT. I ALT. II Depth of: DV Tool: w / sacks of cement Port Collar: w / sack of cement
Packer Type: Size: Inch Set at: Feet
Total Depth: Plug Back Depth: Plug Back Method:

Geological Date:

Table with 4 columns: Formation Name, Formation Top, Formation Base, Completion Information. Rows 1 and 2.

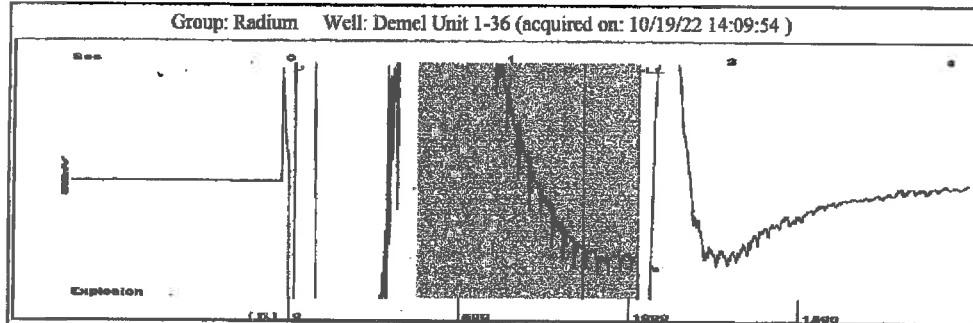
UNDER PENALTY OF PERJURY I HEREBY ATTEST THAT THE INFORMATION CONTAINED HEREIN IS TRUE AND CORRECT TO THE BEST OF MY KNOWLEDGE

Submitted Electronically

Do NOT Write in This Space - KCC USE ONLY
Date Tested: Results: Date Plugged: Date Repaired: Date Put Back in Service:
Review Completed by: Comments:
TA Approved: Yes Denied Date:

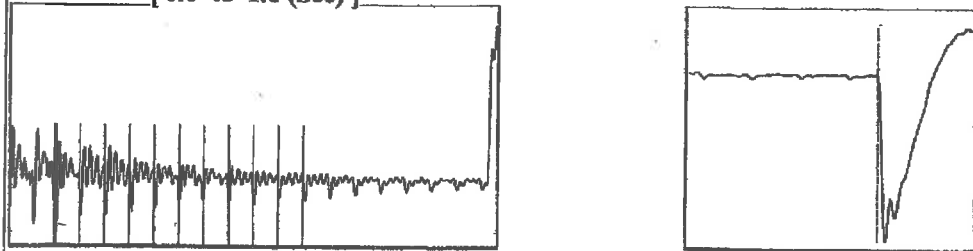
Mail to the Appropriate KCC Conservation Office:

Map of Kansas with 4 numbered districts. Table with 2 columns: Office Name/Address, Phone Number.

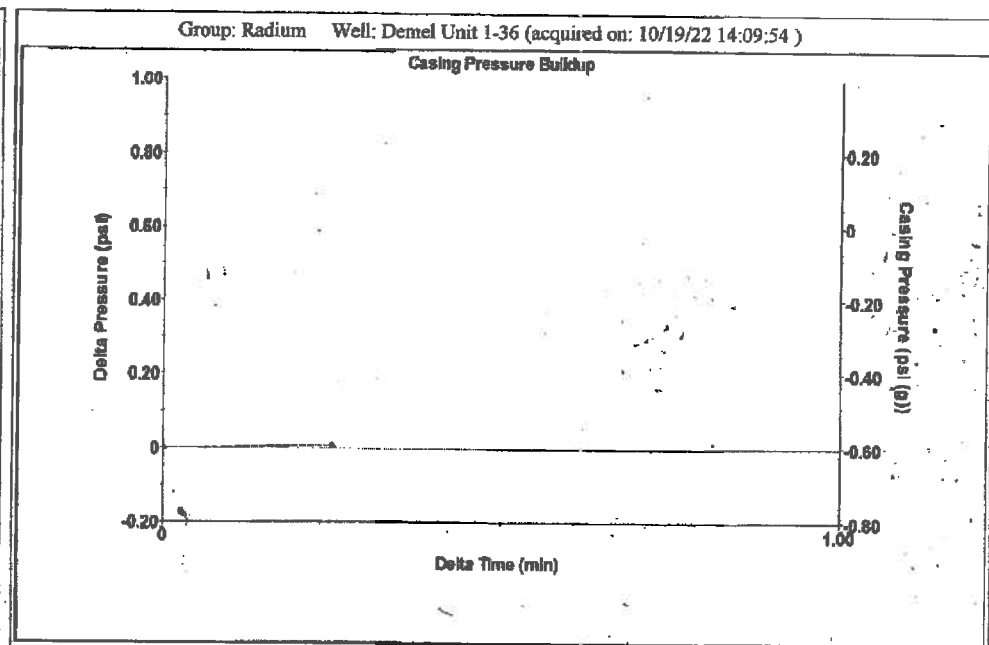


Filter Type High Pass Automatic Collar Count Yes Time 1.587 sec
 Manual Acoustic Velo 1275.69 ft/s Manual JTS/sec 19.6078 Joints 31.5597 Jts
 Depth 1026.64 ft

[0.6 to 1.6 (Sec)]



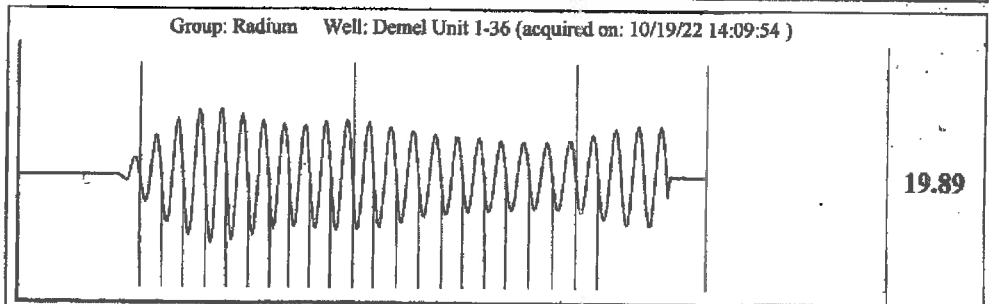
Analysis Method: Automatic



Change in Pressure 0.01 psi PT13440
 Change in Time 0.25 min Range 6-7 psi

Group: Radium Well: Demel Unit 1-36 (acquired on: 10/19/22 14:09:54)

Production Current	Potential	Casing Pressure	Producing
Oil - * -	- * - BBL/D	-0.6 psi (g)	Annular Gas Flow
Water - * -	- * - BBL/D	Casing Pressure Buildup	0 Mscf/D
Gas - * -	- * - Mscf/D	0.0 psi	% Liquid
		0.25 min	100 %
IPR Method	Vogel	Gas/Liquid Interface Pressure	
PBHP/SBHP	- * -	-0.3 psi (g)	
Production Efficiency	0.0		
Oil 40 deg.API		Liquid Level Depth	
Water 1.05 Sp.Gr.H2O		1026.64 ft	
Gas 0.69 Sp.Gr.AIR		Pump Intake Depth	
		3807.00 ft	
Acoustic Velocity	1293.81 ft/s	Formation Depth	
		3770.00 ft	
Formation Submergence		Pump Intake	
Total Gaseous Liquid Column HT (TVD)	2780 ft	920.7 psi (g)	
Equivalent Gas Free Liquid HT (TVD)	2780 ft	Producing BHP	
		909.1 psi (g)	
Acoustic Test		Static BHP	
		- * - psi (g)	



Acoustic Velocity 1293.81 ft/s Joints counted 21
 Joints Per Second 19.8864 jts/sec Joints to liquid level 31.5597
 Depth to liquid level 1026.64 ft Filter Width 17,6078 21.6078
 Automatic Collar Count Yes Time to 1st Collar 0.28 1.336

Conservation Division
District Office No. 1
210 E. Frontview, Suite A
Dodge City, KS 67801



Phone: 620-682-7933
<http://kcc.ks.gov/>

Dwight D. Keen, Chair
Susan K. Duffy, Commissioner
Andrew J. French, Commissioner

Laura Kelly, Governor

October 21, 2022

Loveness Mpanje
F. G. Holl Company L.L.C.
9431 E CENTRAL STE 100
WICHITA, KS 67206-2563

Re: Temporary Abandonment
API 15-145-21682-00-01
DEMEL UNIT "OWWO" 1-36
SW/4 Sec.36-20S-16W
Pawnee County, Kansas

Dear Loveness Mpanje:

"Your temporary abandonment (TA) application for the well listed above has been approved. In accordance with K.A.R. 82-3-111 the TA status of this well will expire 10/21/2023.

- * If you return this well to service or plug it, please notify the District Office.
- * If you sell this well you are required to file a Transfer of Operator form, T-1.
- * If the well will remain temporarily abandoned, you must submit a new TA application, CP-111, before 10/21/2023.

You may contact me at the number above if you have questions.

Very truly yours,

Michael Maier"