

KANSAS CORPORATION COMMISSION
OIL & GAS CONSERVATION DIVISION

TEMPORARY ABANDONMENT WELL APPLICATION

OPERATOR: License#
Name:
Address 1:
Address 2:
City: State: Zip:
Contact Person:
Phone:
Contact Person Email:
Field Contact Person:
Field Contact Person Phone:

API No. 15-
Spot Description:
Sec. Twp. S. R.
GPS Location: Lat: Long:
Datum: NAD27 NAD83 WGS84
County: Elevation:
Lease Name: Well #:
Well Type: Oil Gas OG WSW Other:
SWD Permit #: ENHR Permit #:
Gas Storage Permit #:
Spud Date: Date Shut-In:

Table with 7 columns: Conductor, Surface, Production, Intermediate, Liner, Tubing. Rows include Size, Setting Depth, Amount of Cement, Top of Cement, Bottom of Cement.

Casing Fluid Level from Surface: How Determined? Date:
Casing Squeeze(s): to w / sacks of cement, to w / sacks of cement. Date:
Do you have a valid Oil & Gas Lease? Yes No
Depth and Type: Junk in Hole at Tools in Hole at Casing Leaks: Yes No Depth of casing leak(s):
Type Completion: ALT. I ALT. II Depth of: DV Tool: w / sacks of cement Port Collar: w / sack of cement
Packer Type: Size: Inch Set at: Feet
Total Depth: Plug Back Depth: Plug Back Method:

Geological Date:

Table with 4 columns: Formation Name, Formation Top, Formation Base, Completion Information. Rows 1 and 2.

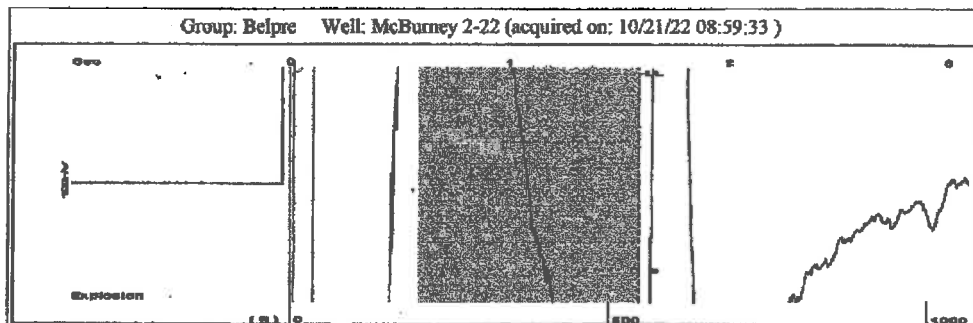
UNDER PENALTY OF PERJURY I HEREBY ATTEST THAT THE INFORMATION CONTAINED HEREIN IS TRUE AND CORRECT TO THE BEST OF MY KNOWLEDGE

Submitted Electronically

Do NOT Write in This Space - KCC USE ONLY
Date Tested: Results: Date Plugged: Date Repaired: Date Put Back in Service:
Review Completed by: Comments:
TA Approved: Yes Denied Date:

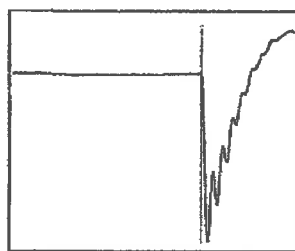
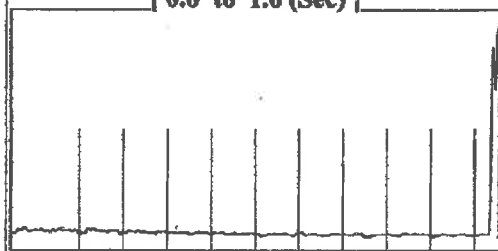
Mail to the Appropriate KCC Conservation Office:

Table with 2 columns: Office Address, Phone. Rows for KCC District Office #1, #2, #3, #4.

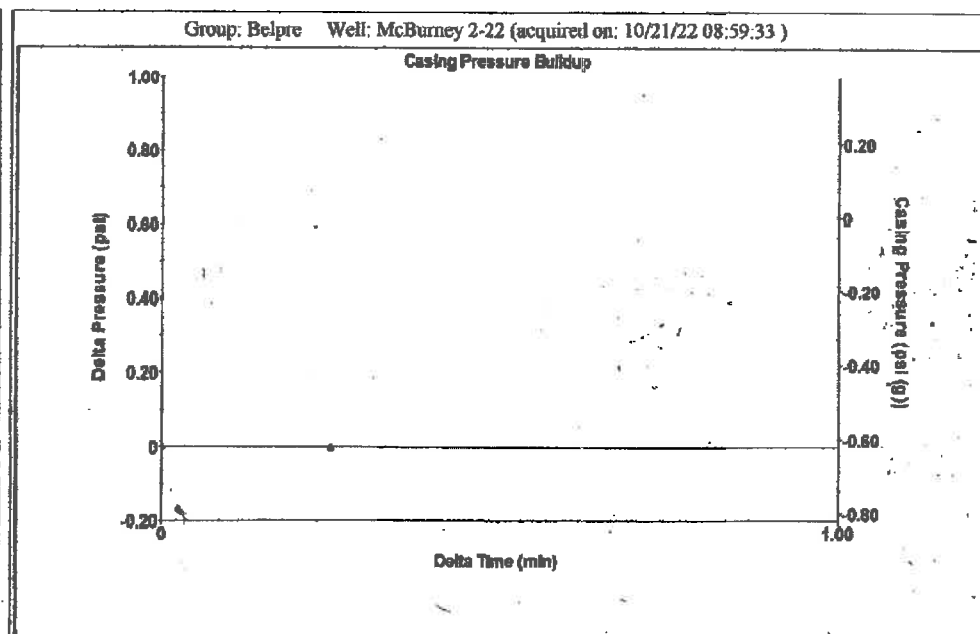


Filter Type High Pass Automatic Collar Count Yes Time 1.589 sec
 Manual Acoustic Velocity 688.346 ft/s Manual JTS/sec 11.0988 Joints 17.636 Jts
 Depth 546.89 ft

[0.6 to 1.6 (Sec)]



Analysis Method: Automatic



Change in Pressure -0.00 psi PT13440
 Change in Time 0.25 min Range 0 - ? psi

Group: Belpre Well: McBurney 2-22 (acquired on: 10/21/22 08:59:33)

| | | | | | |
|--|------------------|-------------------------------|--|------------------|----------|
| Production | Potential | Casing Pressure | | Producing | |
| Current | | -0.6 psi (g) | | Annular Gas Flow | 0 Mscf/D |
| Oil -*- BBL/D | | Casing Pressure Buildup | | % Liquid | 100 % |
| Water -*- BBL/D | | -0.002 psi | | | |
| Gas -*- Mscf/D | | 0.25 min | | | |
| IPR Method Vogel | | Gas/Liquid Interface Pressure | | | |
| PBHP/SBHP -*- | | -0.3 psi (g) | | | |
| Production Efficiency 0.0 | | Liquid Level Depth | | | |
| Oil 40 deg.API | | 546.89 ft | | | |
| Water 1.05 Sp.Gr.H2O | | Pump Intake Depth | | | |
| Gas 1.26 Sp.Gr.AIR | | 4342.00 ft | | | |
| Acoustic Velocity 688.346 ft/s | | Formation Depth | | | |
| | | 4322.00 ft | | | |
| Formation Submergence | | Pump Intake | | | |
| Total Gaseous Liquid Column HT (TVD) 3795 ft | | 1205.6 psi (g) | | | |
| Equivalent Gas Free Liquid HT (TVD) 3795 ft | | Producing BHP | | | |
| | | 1199.9 psi (g) | | | |
| Acoustic Test | | Static BHP | | | |
| | | -*- psi (g) | | | |

Group: Belpre Well: McBurney 2-22 (acquired on: 10/21/22 08:59:33)

| | | | |
|------------------------|-------------|------------------------|-----------------|
| Acoustic Velocity | -*- ft/s | Joints counted | 3 |
| Joints Per Second | -*- jts/sec | Joints to liquid level | -*- |
| Depth to liquid level | -*- ft | Filter Width: | 9.09878 13.0988 |
| Automatic Collar Count | Yes | Time to 1st Collar | -*- |

October 24, 2022

Loveness Mpanje
F. G. Holl Company L.L.C.
9431 E CENTRAL STE 100
WICHITA, KS 67206-2563

Re: Temporary Abandonment
API 15-047-20423-00-00
MCBURNEY 2-22
NE/4 Sec.22-24S-17W
Edwards County, Kansas

Dear Loveness Mpanje:

"Your temporary abandonment (TA) application for the well listed above has been approved. In accordance with K.A.R. 82-3-111 the TA status of this well will expire 10/24/2023.

- * If you return this well to service or plug it, please notify the District Office.
- * If you sell this well you are required to file a Transfer of Operator form, T-1.
- * If the well will remain temporarily abandoned, you must submit a new TA application, CP-111, before 10/24/2023.

You may contact me at the number above if you have questions.

Very truly yours,

Michael Maier"