

KANSAS CORPORATION COMMISSION
OIL & GAS CONSERVATION DIVISION

TEMPORARY ABANDONMENT WELL APPLICATION

OPERATOR: License#
Name:
Address 1:
Address 2:
City: State: Zip:
Contact Person:
Phone:
Contact Person Email:
Field Contact Person:
Field Contact Person Phone:

API No. 15-
Spot Description:
Sec. Twp. S. R.
GPS Location: Lat: Long:
Datum: NAD27 NAD83 WGS84
County: Elevation:
Lease Name: Well #:
Well Type: Oil Gas OG WSW Other:
SWD Permit #: ENHR Permit #:
Gas Storage Permit #:
Spud Date: Date Shut-In:

Table with 7 columns: Conductor, Surface, Production, Intermediate, Liner, Tubing. Rows include Size, Setting Depth, Amount of Cement, Top of Cement, Bottom of Cement.

Casing Fluid Level from Surface: How Determined? Date:
Casing Squeeze(s): to w / sacks of cement, to w / sacks of cement. Date:
Do you have a valid Oil & Gas Lease? Yes No
Depth and Type: Junk in Hole at Tools in Hole at Casing Leaks: Yes No Depth of casing leak(s):
Type Completion: ALT. I ALT. II Depth of: DV Tool: w / sacks of cement Port Collar: w / sack of cement
Packer Type: Size: Inch Set at: Feet
Total Depth: Plug Back Depth: Plug Back Method:

Geological Date:

Table with 4 columns: Formation Name, Formation Top, Formation Base, Completion Information. Rows 1 and 2.

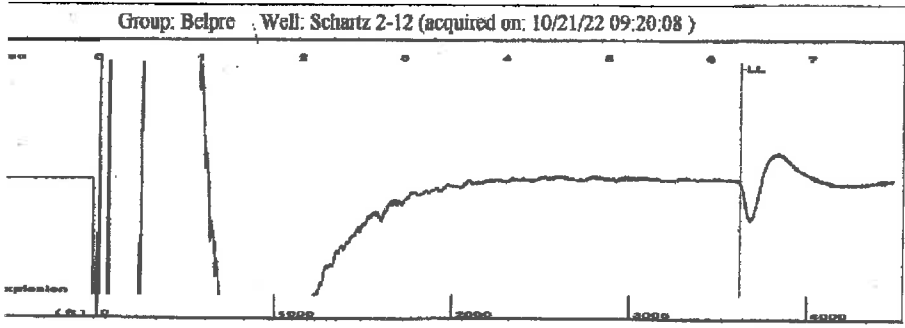
UNDER PENALTY OF PERJURY I HEREBY ATTEST THAT THE INFORMATION CONTAINED HEREIN IS TRUE AND CORRECT TO THE BEST OF MY KNOWLEDGE

Submitted Electronically

Do NOT Write in This Space - KCC USE ONLY
Date Tested: Results: Date Plugged: Date Repaired: Date Put Back in Service:
Review Completed by: Comments:
TA Approved: Yes Denied Date:

Mail to the Appropriate KCC Conservation Office:

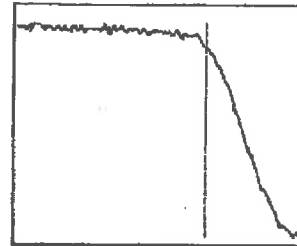
Table with 3 columns: District Office, Address, Phone. Rows for District Office #1, #2, #3, #4.



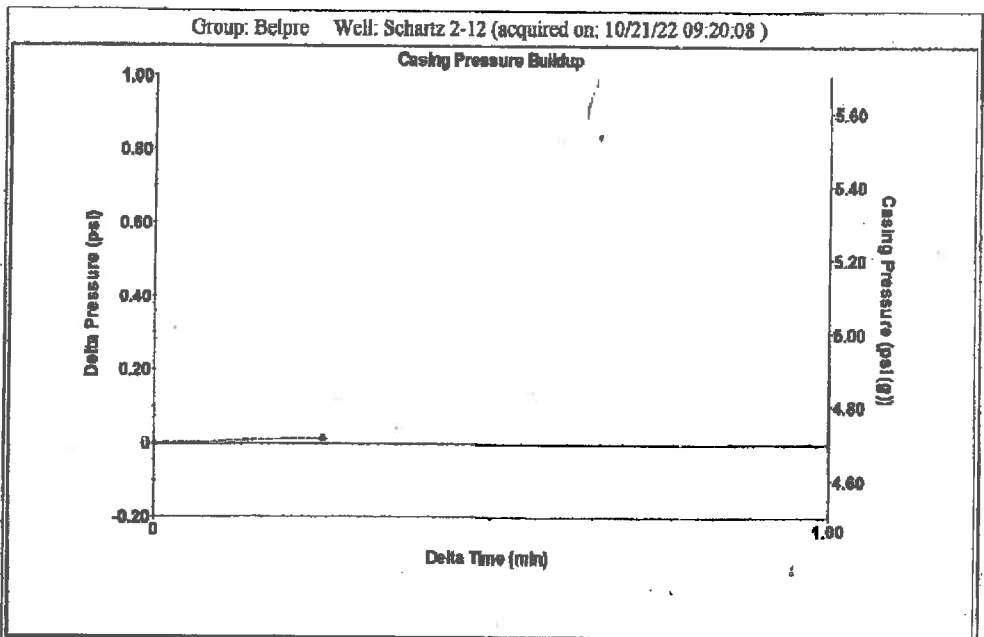
Time 6.298 sec  
 Joints 111,358 Jts  
 Depth 3621.35 ft

Liquid level calculated with user supplied Acoustic Velocity

Acoustic Velocity 1150 ft/s



**Analysis Method: Acoustic Velocity**



Change in Pressure 0.01 psi PT13440  
 Change in Time 0.25 min Range 0-? psi

Group: Belpre Well: Schartz 2-12 (acquired on: 10/21/22 09:20:08 )

Current	Potential	Casing Pressure	Producing
-*- BBL/D	-*- BBL/D	4.7 psi (g)	
-*- BBL/D	-*- BBL/D	Casing Pressure Buildup	
-*- Mscf/D	-*- Mscf/D	0.014 psi	Annular Gas Flow
		0.25 min	1 Mscf/D
Method	Vogel	Gas/Liquid Interface Pressure	% Liquid
WSBHP	-*-	6.8 psi (g)	92 %
Production Efficiency	0.0		
40 deg API		Liquid Level Depth	
1.05 Sp.Gr.H2O		3621.35 ft	
0.85 Sp.Gr.AIR		Pump Intake Depth	
		4360.00 ft	
Acoustic Velocity	1150 ft/s	Formation Depth	
		4273.00 ft	
Production Submergence			
Gaseous Liquid Column HT (TVD)	739 ft	Pump Intake	
Submergence Gas Free Liquid HT (TVD)	687 ft	239.7 psi (g)	
		Producing BHP	
		210.6 psi (g)	
		Static BHP	
		-*- psi (g)	

Group: Belpre Well: Schartz 2-12 (acquired on: 10/21/22 09:20:08 )

**Entered Acoustic Velocity for Liquid Level depth determination**

October 24, 2022

Loveness Mpanje  
F. G. Holl Company L.L.C.  
9431 E CENTRAL STE 100  
WICHITA, KS 67206-2563

Re: Temporary Abandonment  
API 15-047-20733-00-00  
SCHARTZ 2-12  
SW/4 Sec.12-24S-17W  
Edwards County, Kansas

Dear Loveness Mpanje:

"Your temporary abandonment (TA) application for the well listed above has been approved. In accordance with K.A.R. 82-3-111 the TA status of this well will expire 10/24/2023.

- \* If you return this well to service or plug it, please notify the District Office.
- \* If you sell this well you are required to file a Transfer of Operator form, T-1.
- \* If the well will remain temporarily abandoned, you must submit a new TA application, CP-111, before 10/24/2023.

You may contact me at the number above if you have questions.

Very truly yours,

Michael Maier"