

KANSAS CORPORATION COMMISSION
OIL & GAS CONSERVATION DIVISION

TEMPORARY ABANDONMENT WELL APPLICATION

OPERATOR: License#
Name:
Address 1:
Address 2:
City: State: Zip:
Contact Person:
Phone:
Contact Person Email:
Field Contact Person:
Field Contact Person Phone:

API No. 15-
Spot Description:
Sec. Twp. S. R.
GPS Location: Lat: Long:
Datum: NAD27 NAD83 WGS84
County: Elevation:
Lease Name: Well #:
Well Type: Oil Gas OG WSW Other:
SWD Permit #: ENHR Permit #:
Gas Storage Permit #:
Spud Date: Date Shut-In:

Table with 7 columns: Conductor, Surface, Production, Intermediate, Liner, Tubing. Rows include Size, Setting Depth, Amount of Cement, Top of Cement, Bottom of Cement.

Casing Fluid Level from Surface: How Determined? Date:
Casing Squeeze(s): to w / sacks of cement, to w / sacks of cement. Date:
Do you have a valid Oil & Gas Lease? Yes No
Depth and Type: Junk in Hole at Tools in Hole at Casing Leaks: Yes No Depth of casing leak(s):
Type Completion: ALT. I ALT. II Depth of: DV Tool: w / sacks of cement Port Collar: w / sack of cement
Packer Type: Size: Inch Set at: Feet
Total Depth: Plug Back Depth: Plug Back Method:

Geological Data:

Table with 4 columns: Formation Name, Formation Top, Formation Base, Completion Information. Rows 1 and 2.

UNDER PENALTY OF PERJURY I HEREBY ATTEST THAT THE INFORMATION CONTAINED HEREIN IS TRUE AND CORRECT TO THE BEST OF MY KNOWLEDGE

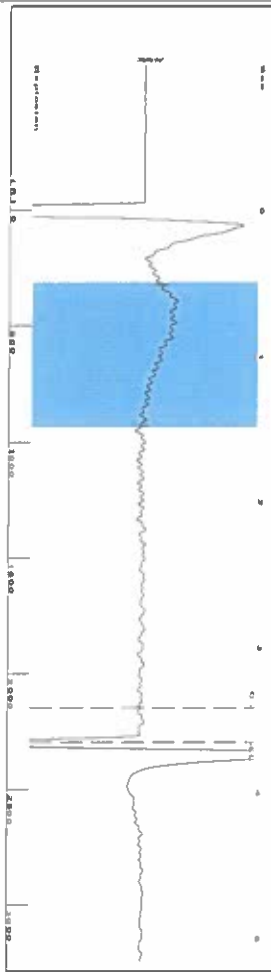
Submitted Electronically

Do NOT Write in This Space - KCC USE ONLY
Date Tested: Results: Date Plugged: Date Repaired: Date Put Back in Service:
Review Completed by: Comments:
TA Approved: Yes Denied Date:

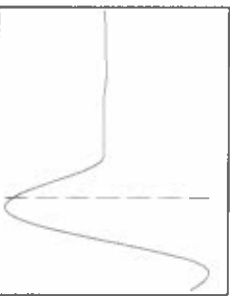
Mail to the Appropriate KCC Conservation Office:

Table with 2 columns: Office Address, Phone. Rows for District Office #1, #2, #3, #4.

Group: SUBLETTE Well: CORRELL A-1 (acquired on: 10/25/22 09:49:10)



[0.5 to 1.5 (Sec)]



Filter Type High Pass Automatic Collar Count Yes
 Manual Acoustic Velo 1228.68 N/S Manna 115/sec 19.3798
 Time 3.653 sec
 Joints 72.406 Jis
 Depth 2295.27 ft

Analysis Method: Automatic

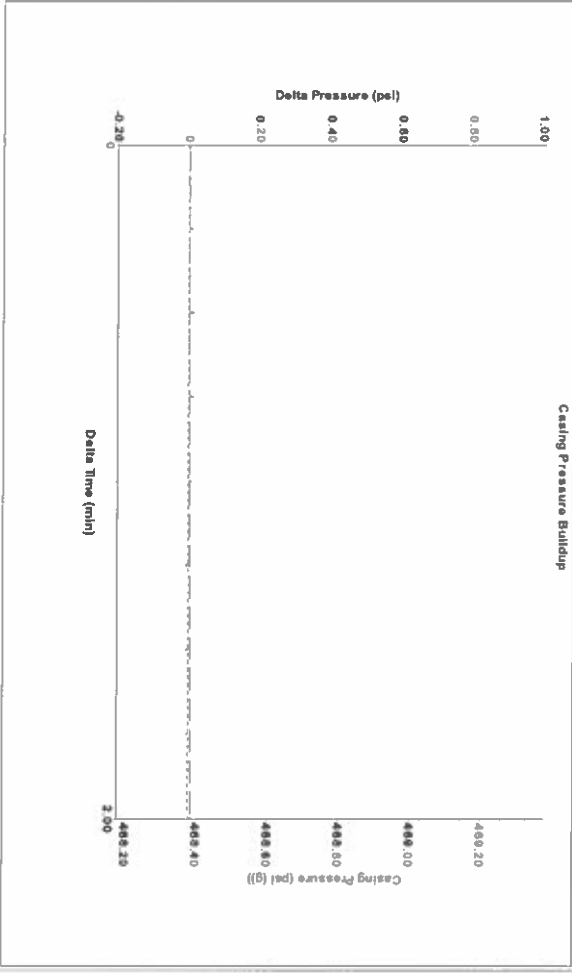
Group: SUBLETTE Well: CORRELL A-1 (acquired on: 10/25/22 09:49:10)

Production	Potential	Casing Pressure	Producing
Oil Current	-* BBL/D	468.4 psi (g)	Annular Gas Flow
Water	-* BBL/D	Casing Pressure Buildup	0 Mscf/D
Gas	-* Mscf/D	0.0 psi	% Liquid
IPR Method	Vogel	2.00 min Gas/Liquid Interface Pressure	100 %
PBHP/SBHP	0.0	497.2 psi (g)	
Production Efficiency		Liquid Level Depth	
Oil	40 deg-API	2295.27 ft	
Water	1.05 Sp.Gr:H2O	Pump Intake Depth	
Gas	0.68 Sp.Gr:AIR	4817.00 ft	
Acoustic Velocity	1256.65 ft/s	Formation Depth	
		4794.00 ft	



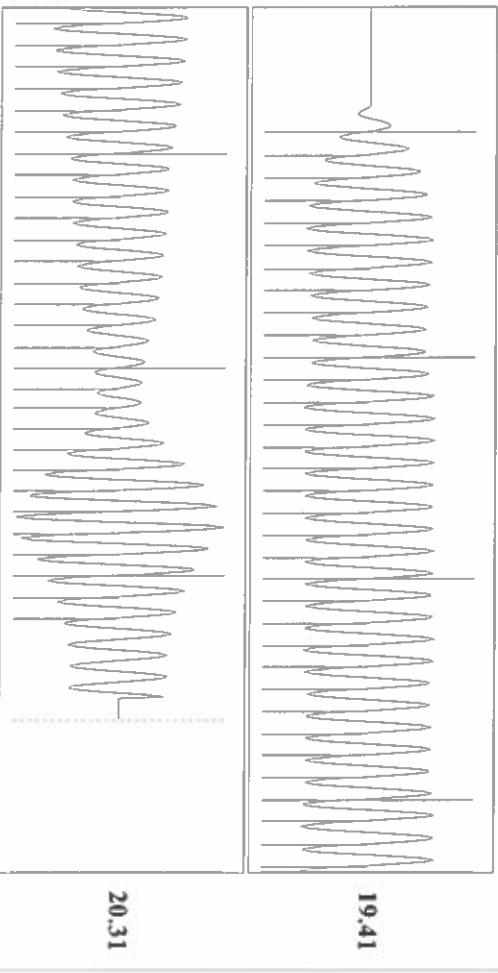
Pump Intake 1295.7 psi (g)
 Producing BHP 1288.8 psi (g)
 Static BHP

Group: SUBLETTE Well: CORRELL A-1 (acquired on: 10/25/22 09:49:10)



Change in Pressure 0.01 psi PT16716
 Change in Time 2.00 min Range 0 - 2 psi

Group: SUBLETTE Well: CORRELL A-1 (acquired on: 10/25/22 09:49:10)



Acoustic Velocity 1256.65 ft/s Joints counted 62
 Joints Per Second 19.821 Jis/sec Joints to liquid level 72.406
 Depth to liquid level 2295.27 ft Filter Width 17.3798
 Automatic Collar Count Yes Time to 1st Collar 0.288 21.3798 3.416

Conservation Division
District Office No. 1
210 E. Frontview, Suite A
Dodge City, KS 67801



Phone: 620-682-7933
<http://kcc.ks.gov/>

Dwight D. Keen, Chair
Susan K. Duffy, Commissioner
Andrew J. French, Commissioner

Laura Kelly, Governor

October 27, 2022

Katherine McClurkan
Merit Energy Company, LLC
13727 Noel Road, Suite 1200
Dallas, TX 75240

Re: Temporary Abandonment
API 15-081-21955-00-00
Correll A-1
NW/4 Sec.08-30S-33W
Haskell County, Kansas

Dear Katherine McClurkan:

"Your temporary abandonment (TA) application for the well listed above has been approved. In accordance with K.A.R. 82-3-111 the TA status of this well will expire 10/27/2023.

- * If you return this well to service or plug it, please notify the District Office.
- * If you sell this well you are required to file a Transfer of Operator form, T-1.
- * If the well will remain temporarily abandoned, you must submit a new TA application, CP-111, before 10/27/2023.

You may contact me at the number above if you have questions.

Very truly yours,

Michael Maier"