

KANSAS CORPORATION COMMISSION
OIL & GAS CONSERVATION DIVISION

TEMPORARY ABANDONMENT WELL APPLICATION

OPERATOR: License#
Name:
Address 1:
Address 2:
City: State: Zip:
Contact Person:
Phone:
Contact Person Email:
Field Contact Person:
Field Contact Person Phone:

API No. 15-
Spot Description:
Sec. Twp. S. R.
GPS Location: Lat: Long:
Datum: NAD27 NAD83 WGS84
County: Elevation:
Lease Name: Well #:
Well Type: Oil Gas OG WSW Other:
SWD Permit #: ENHR Permit #:
Gas Storage Permit #:
Spud Date: Date Shut-In:

Table with 7 columns: Conductor, Surface, Production, Intermediate, Liner, Tubing. Rows include Size, Setting Depth, Amount of Cement, Top of Cement, Bottom of Cement.

Casing Fluid Level from Surface: How Determined? Date:
Casing Squeeze(s): to w / sacks of cement, to w / sacks of cement. Date:
Do you have a valid Oil & Gas Lease? Yes No
Depth and Type: Junk in Hole at Tools in Hole at Casing Leaks: Yes No Depth of casing leak(s):
Type Completion: ALT. I ALT. II Depth of: DV Tool: w / sacks of cement Port Collar: w / sack of cement
Packer Type: Size: Inch Set at: Feet
Total Depth: Plug Back Depth: Plug Back Method:

Geological Data:

Table with 4 columns: Formation Name, Formation Top, Formation Base, Completion Information. Rows 1 and 2.

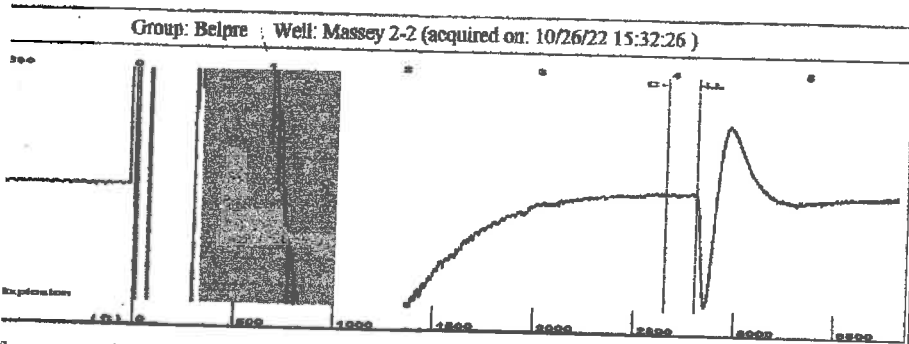
UNDER PENALTY OF PERJURY I HEREBY ATTEST THAT THE INFORMATION CONTAINED HEREIN IS TRUE AND CORRECT TO THE BEST OF MY KNOWLEDGE

Submitted Electronically

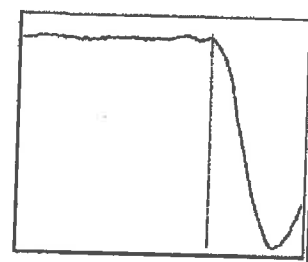
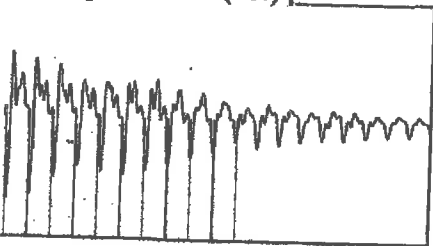
Form with fields: Do NOT Write in This Space - KCC USE ONLY, Date Tested, Results, Date Plugged, Date Repaired, Date Put Back in Service, Review Completed by, Comments, TA Approved: Yes Denied, Date.

Mail to the Appropriate KCC Conservation Office:

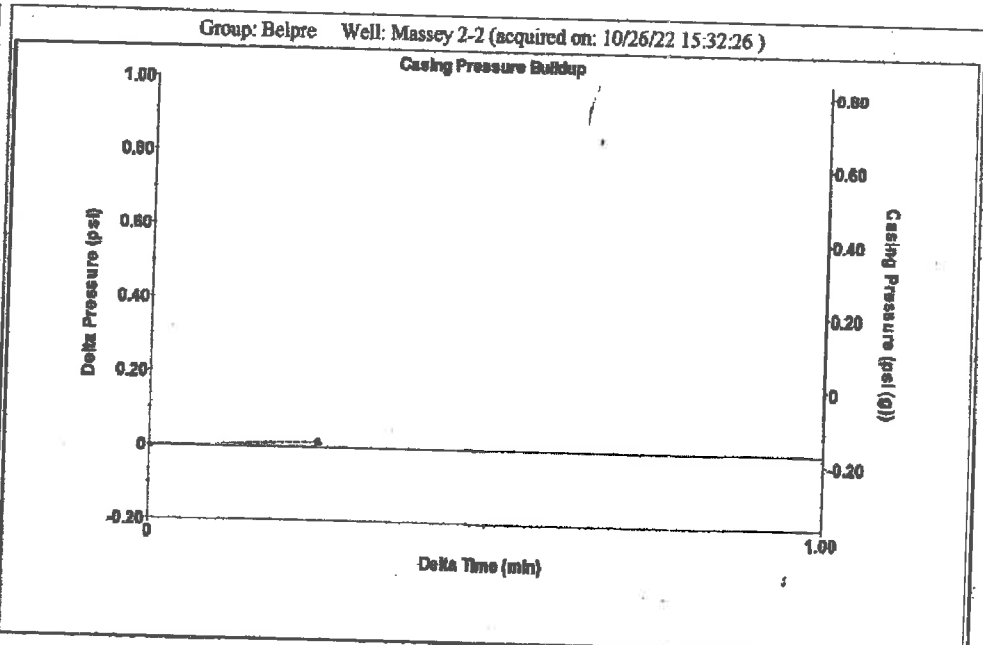
Table with 2 columns: Office Address, Phone. Rows for KCC District Office #1, #2, #3, #4.



Type High Pass Automatic Collar Count Yes Time 4.174 sec
 Acoustic Veloc 1278.9 ft/s Manual JTS/sec 21.097 Joints 92.5049 Jts
 Depth 2803.82 ft



Analysis Method: Automatic

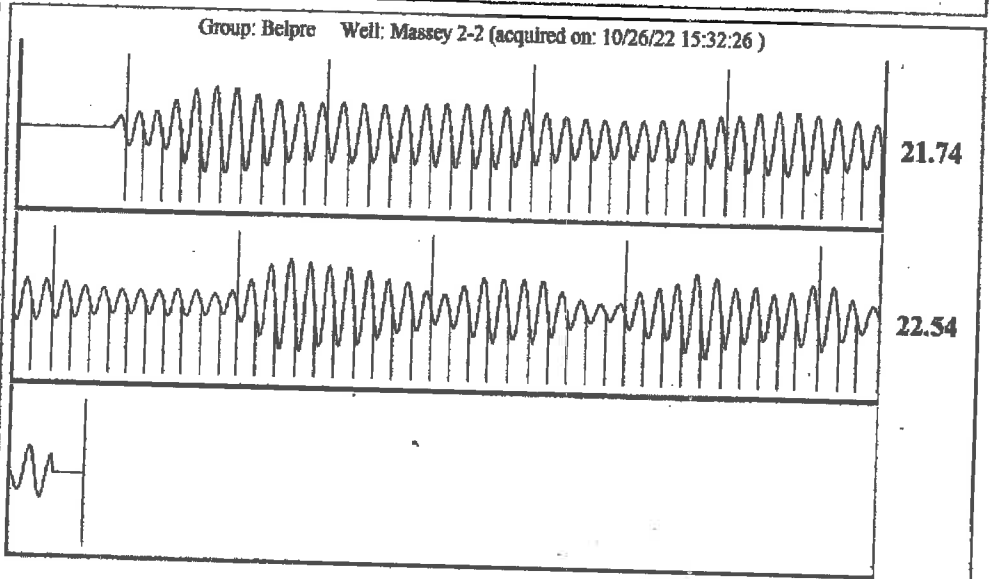


Change in Pressure 0.01 psi PTJ3440
 Change in Time 0.25 min Range 0-? psi

Group: Belpre Well: Massey 2-2 (acquired on: 10/26/22 15:32:26)

Action Current Potential BBL/D BBL/D Mscf/D Method P/SBHP Action Efficiency 40 deg API r 1.05 Sp.Gr.H2O 0.66 Sp.Gr.AIR Acoustic Velocity 1343.47 ft/s	Casing Pressure -0.2 psi (g) Casing Pressure Buildup 0.014 psi 0.25 min Gas/Liquid Interface Pressure 0.8 psi (g) Liquid Level Depth 2803.82 ft Pump Intake Depth 4335.00 ft Formation Depth 4299.00 ft	Producing Annular Gas Flow 1 Mscf/D % Liquid 94 %
---	---	---

Action Submergence Gaseous Liquid Column HT (TVD) 1531 ft Potential Gas Free Liquid HT (TVD) 1436 ft	Pump Intake 481.3 psi (g) Producing BHP 469.6 psi (g) Static BHP - * - psi (g)
--	---



Acoustic Velocity	1343.47 ft/s	Joints counted	82
Joints Per Second	22.1622 jts/sec	Joints to liquid level	92.5049
Depth to liquid level	2803.82 ft	Filter Width	19.097
Automatic Collar Count	Yes	Time to 1st Collar	23.097
			3.948

October 27, 2022

Loveness Mpanje
F. G. Holl Company L.L.C.
9431 E CENTRAL STE 100
WICHITA, KS 67206-2563

Re: Temporary Abandonment
API 15-047-21199-00-00
MASSEY 2
SW/4 Sec.02-24S-17W
Edwards County, Kansas

Dear Loveness Mpanje:

"Your temporary abandonment (TA) application for the well listed above has been approved. In accordance with K.A.R. 82-3-111 the TA status of this well will expire 10/27/2023.

- * If you return this well to service or plug it, please notify the District Office.
- * If you sell this well you are required to file a Transfer of Operator form, T-1.
- * If the well will remain temporarily abandoned, you must submit a new TA application, CP-111, before 10/27/2023.

You may contact me at the number above if you have questions.

Very truly yours,

Michael Maier"