

KANSAS CORPORATION COMMISSION
OIL & GAS CONSERVATION DIVISION

TEMPORARY ABANDONMENT WELL APPLICATION

OPERATOR: License#
Name:
Address 1:
Address 2:
City: State: Zip:
Contact Person:
Phone:
Contact Person Email:
Field Contact Person:
Field Contact Person Phone:

API No. 15-
Spot Description:
Sec. Twp. S. R.
GPS Location: Lat: Long:
Datum: NAD27 NAD83 WGS84
County: Elevation:
Lease Name: Well #:
Well Type: Oil Gas OG WSW Other:
SWD Permit #: ENHR Permit #:
Gas Storage Permit #:
Spud Date: Date Shut-In:

Table with 7 columns: Conductor, Surface, Production, Intermediate, Liner, Tubing. Rows include Size, Setting Depth, Amount of Cement, Top of Cement, Bottom of Cement.

Casing Fluid Level from Surface: How Determined? Date:
Casing Squeeze(s): to w / sacks of cement, to w / sacks of cement. Date:
Do you have a valid Oil & Gas Lease? Yes No
Depth and Type: Junk in Hole at Tools in Hole at Casing Leaks: Yes No Depth of casing leak(s):
Type Completion: ALT. I ALT. II Depth of: DV Tool: w / sacks of cement Port Collar: w / sack of cement
Packer Type: Size: Inch Set at: Feet
Total Depth: Plug Back Depth: Plug Back Method:

Geological Data:

Table with 4 columns: Formation Name, Formation Top, Formation Base, Completion Information. Rows 1 and 2.

UNDER PENALTY OF PERJURY I HEREBY ATTEST THAT THE INFORMATION CONTAINED HEREIN IS TRUE AND CORRECT TO THE BEST OF MY KNOWLEDGE

Submitted Electronically

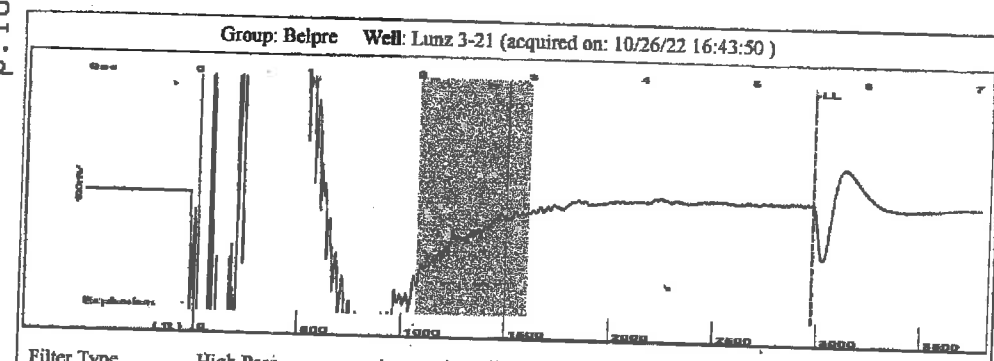
Do NOT Write in This Space - KCC USE ONLY
Date Tested: Results: Date Plugged: Date Repaired: Date Put Back in Service:
Review Completed by: Comments:
TA Approved: Yes Denied Date:

Mail to the Appropriate KCC Conservation Office:

Table with 2 columns: Office Address, Phone. Rows for District Office #1, #2, #3, #4.

Oct 27 2022 10:32AM HP LASERJET FAX

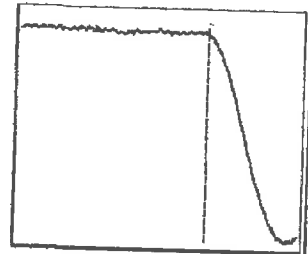
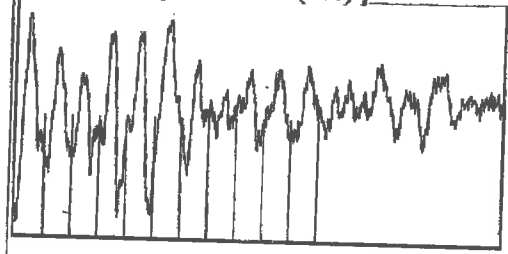
P.10



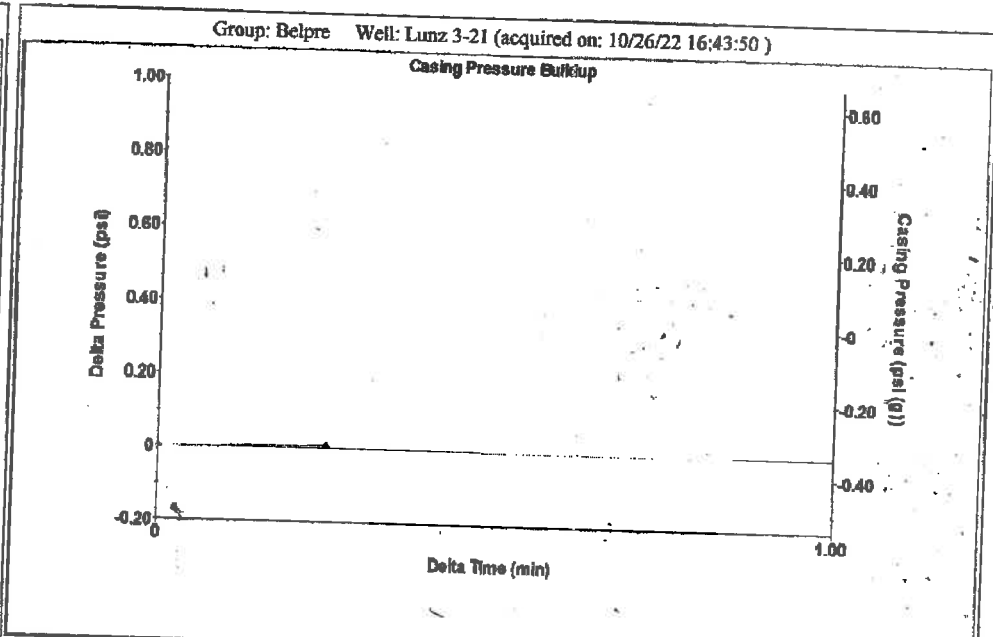
Group: Belpre Well: Lunz 3-21 (acquired on: 10/26/22 16:43:50)

Filter Type	High Pass	Automatic Collar Count	Yes	Time	5.54 sec
Manual Acoustic Veloc.	1103.2 ft/s	Manual JTS/sec	17.7936	Joints	95.9685 Jts
				Depth	2975.02 ft

[2.0 to 3.0 (Sec)]



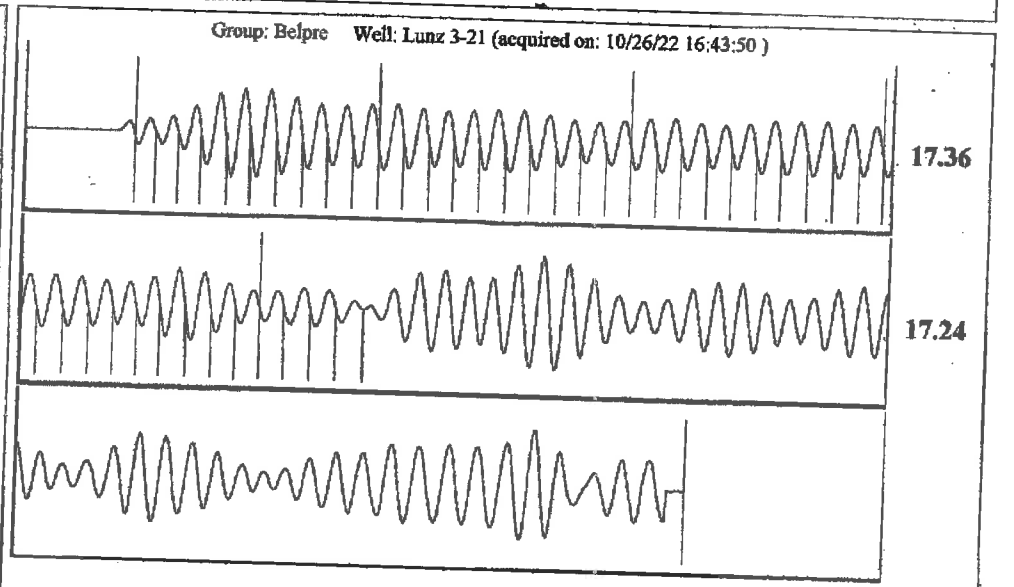
Analysis Method: Automatic



Change in Pressure	0.01 psi	PT13440
Change in Time	0.25 min	Range 0 - 7 psi

Group: Belpre Well: Lunz 3-21 (acquired on: 10/26/22 16:43:50)

Production	Potential	Casing Pressure	Producing
Current	-* BBL/D	-0.3 psi (g)	
Oil	-* BBL/D	Casing Pressure Buildup	Annular
Water	-* Mscf/D	0.007 psi	Gas Flow
Gas	-* Mscf/D	0.25 min	0 Mscf/D
		Gas/Liquid Interface Pressure	% Liquid
		1.0 psi (g)	98 %
IPR Method	Vogel	Liquid Level Depth	Pump Intake
PBHP/SBHP	-*	2975.02 ft	463.7 psi (g)
Production Efficiency	0.0	Pump Intake Depth	Producing BHP
		4372.00 ft	454.9 psi (g)
Oil 40 deg.API		Formation Depth	Static BHP
Water 1.05 Sp.Gr.H2O		4345.00 ft	-* psi (g)
Gas 0.91 Sp.Gr.AIR			
Acoustic Velocity 1074.02 ft/s			
Formation Submergence			
Total Gaseous Liquid Column HT (TVD)	1397 ft		
Equivalent Gas Free Liquid HT (TVD)	1373 ft		
Acoustic Test			



Acoustic Velocity	1074.02 ft/s	Joints counted	44
Joints Per Second	17.3228 jts/sec	Joints to liquid level	95.9685
Depth to liquid level	2975.02 ft	Filter Width	15.7936
Automatic Collar Count	Yes	Time to 1st Collar	0.252
			19.7936
			2.792

October 27, 2022

Loveness Mpanje
F. G. Holl Company L.L.C.
9431 E CENTRAL STE 100
WICHITA, KS 67206-2563

Re: Temporary Abandonment
API 15-047-20648-00-00
LUNZ 3-21
NE/4 Sec.21-24S-16W
Edwards County, Kansas

Dear Loveness Mpanje:

"Your temporary abandonment (TA) application for the well listed above has been approved. In accordance with K.A.R. 82-3-111 the TA status of this well will expire 10/27/2023.

- * If you return this well to service or plug it, please notify the District Office.
- * If you sell this well you are required to file a Transfer of Operator form, T-1.
- * If the well will remain temporarily abandoned, you must submit a new TA application, CP-111, before 10/27/2023.

You may contact me at the number above if you have questions.

Very truly yours,

Michael Maier"