

KANSAS CORPORATION COMMISSION
OIL & GAS CONSERVATION DIVISION

TEMPORARY ABANDONMENT WELL APPLICATION

OPERATOR: License# _____
 Name: _____
 Address 1: _____
 Address 2: _____
 City: _____ State: _____ Zip: _____ + _____
 Contact Person: _____
 Phone: (_____) _____
 Contact Person Email: _____
 Field Contact Person: _____
 Field Contact Person Phone: (_____) _____

API No. 15- _____
 Spot Description: _____
 _____ - _____ - _____ - _____ Sec. _____ Twp. _____ S. R. _____ E W
 _____ feet from N / S Line of Section
 _____ feet from E / W Line of Section
 GPS Location: Lat: _____, Long: _____
(e.g. xx.xxxxx) (e.g. -xxx.xxxxx)
 Datum: NAD27 NAD83 WGS84
 County: _____ Elevation: _____ GL KB
 Lease Name: _____ Well #: _____
 Well Type: (check one) Oil Gas OG WSW Other: _____
 SWD Permit #: _____ ENHR Permit #: _____
 Gas Storage Permit #: _____
 Spud Date: _____ Date Shut-In: _____

	Conductor	Surface	Production	Intermediate	Liner	Tubing
Size						
Setting Depth						
Amount of Cement						
Top of Cement						
Bottom of Cement						

Casing Fluid Level from Surface: _____ How Determined? _____ Date: _____
 Casing Squeeze(s): _____ to _____ w / _____ sacks of cement, _____ to _____ w / _____ sacks of cement. Date: _____
(top) (bottom) (top) (bottom)
 Do you have a valid Oil & Gas Lease? Yes No
 Depth and Type: Junk in Hole at _____ Tools in Hole at _____ Casing Leaks: Yes No Depth of casing leak(s): _____
(depth) (depth)
 Type Completion: ALT. I ALT. II Depth of: DV Tool: _____ w / _____ sacks of cement Port Collar: _____ w / _____ sack of cement
(depth) (depth)
 Packer Type: _____ Size: _____ Inch Set at: _____ Feet
 Total Depth: _____ Plug Back Depth: _____ Plug Back Method: _____

Geological Data:

Formation Name	Formation Top	Formation Base	Completion Information
1. _____	At: _____	to _____ Feet	Perforation Interval _____ to _____ Feet or Open Hole Interval _____ to _____ Feet
2. _____	At: _____	to _____ Feet	Perforation Interval _____ to _____ Feet or Open Hole Interval _____ to _____ Feet

UNDER PENALTY OF PERJURY I HEREBY ATTEST THAT THE INFORMATION CONTAINED HEREIN IS TRUE AND CORRECT TO THE BEST OF MY KNOWLEDGE

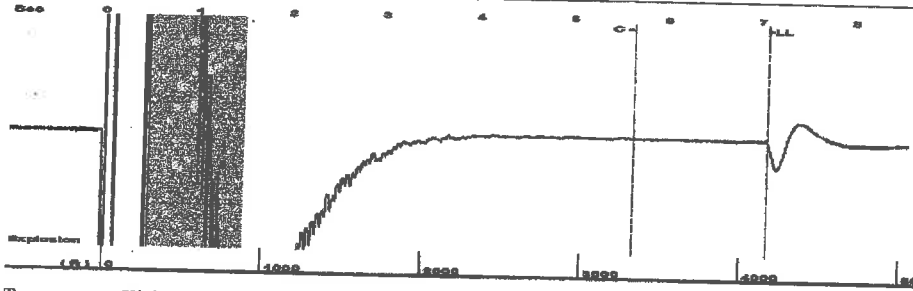
Submitted Electronically

Do NOT Write in This Space - KCC USE ONLY	Date Tested: _____	Results: _____	Date Plugged: _____	Date Repaired: _____	Date Put Back in Service: _____
	Review Completed by: _____ Comments: _____				
TA Approved: <input type="checkbox"/> Yes <input type="checkbox"/> Denied Date: _____					

Mail to the Appropriate KCC Conservation Office:

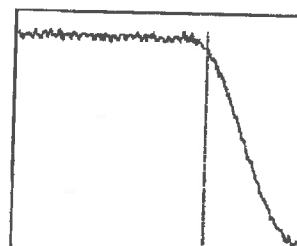
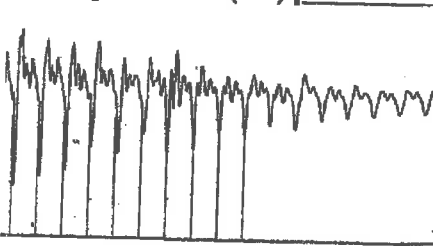
	KCC District Office #1 - 210 E. Frontview, Suite A, Dodge City, KS 67801	Phone 620.682.7933
	KCC District Office #2 - 3450 N. Rock Road, Building 600, Suite 601, Wichita, KS 67226	Phone 316.337.7400
	KCC District Office #3 - 137 E. 21st St., Chanute, KS 66720	Phone 620.902.6450
	KCC District Office #4 - 2301 E. 13th Street, Hays, KS 67601-2651	Phone 785.261.6250

Group: Belpre Well: Chalk 1-13 (acquired on: 10/26/22 14:18:13)



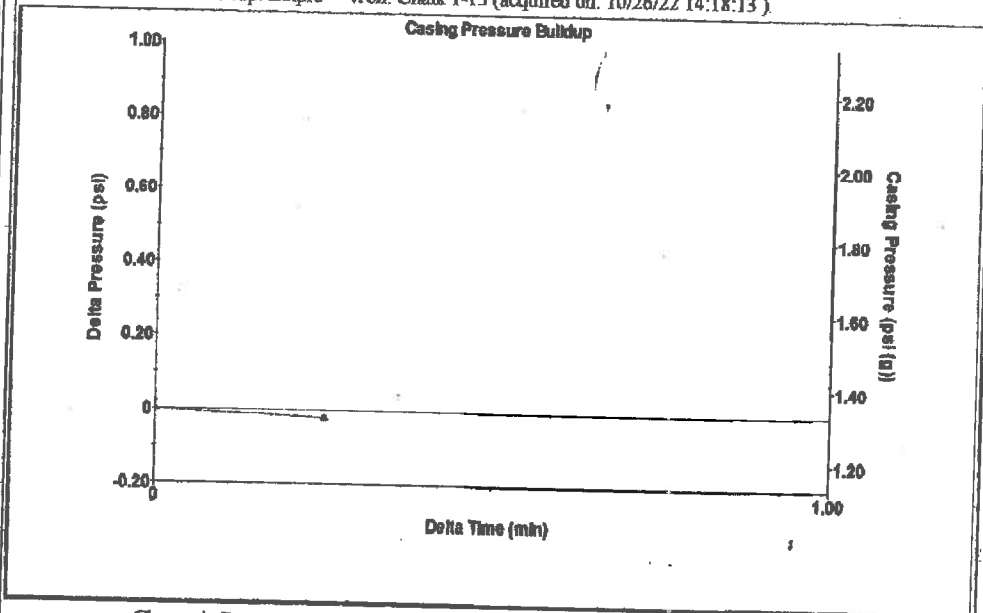
Type High Pass Automatic Collar Count Yes Time 7.069 sec
 al Acoustic Vel 1178.07 ft/s Manual JTS/sec 18.9036 Joints 133.724 JTS
 Depth 4166.83 ft

[0.5 to 1.5 (Sec)]



Analysis Method: Automatic

Group: Belpre Well: Chalk 1-13 (acquired on: 10/26/22 14:18:13)



Change in Pressure -0.02 psi PT13440
 Change in Time 0.25 min Range 0 - 7 psi

Group: Belpre Well: Chalk 1-13 (acquired on: 10/26/22 14:18:13)

Production Current Potential
 -*- BBL/D
 -*- BBL/D
 -*- Mscf/D

Method Vogel
 P/SBHP
 Production Efficiency 0.0

40 deg API
 or 1.05 Sp.Gr.H2O
 0.82 Sp.Gr.AIR

Acoustic Velocity 1178.9 ft/s

Gas/Liquid Interface Pressure 3.3 psi (g)

Liquid Level Depth 4166.83 ft

Pump Intake Depth 4425.00 ft

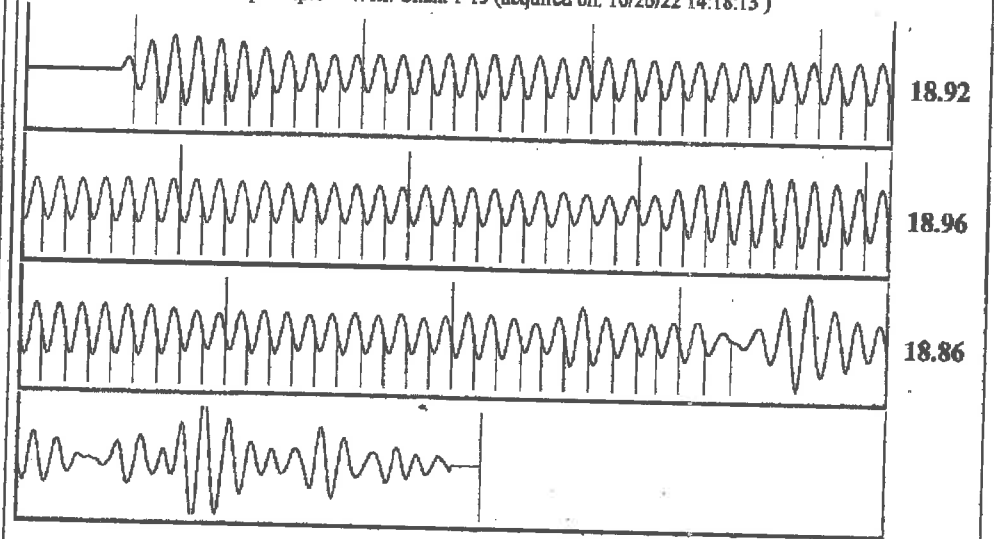
Formation Depth 4420.00 ft



Producing
 Annular Gas Flow 0 Mscf/D
 % Liquid 100 %

Pump Intake 91.1 psi (g)
 Producing BHP 89.4 psi (g)
 Static BHP -*- psi (g)

Group: Belpre Well: Chalk 1-13 (acquired on: 10/26/22 14:18:13)



Acoustic Velocity 1178.9 ft/s Joints counted 102
 Joints Per Second 18.9169 jts/sec Joints to liquid level 133.724
 Depth to liquid level 4166.83 ft Filter Width 16.9036 20.9036
 Automatic Collar Count Yes Time to 1st Collar 0.248 5.64

HP LASERJET FAX
 P. 3

October 27, 2022

Loveness Mpanje
F. G. Holl Company L.L.C.
9431 E CENTRAL STE 100
WICHITA, KS 67206-2563

Re: Temporary Abandonment
API 15-047-20378-00-00
CHALK 1-13
SE/4 Sec.13-24S-18W
Edwards County, Kansas

Dear Loveness Mpanje:

"Your temporary abandonment (TA) application for the well listed above has been approved. In accordance with K.A.R. 82-3-111 the TA status of this well will expire 10/27/2023.

- * If you return this well to service or plug it, please notify the District Office.
- * If you sell this well you are required to file a Transfer of Operator form, T-1.
- * If the well will remain temporarily abandoned, you must submit a new TA application, CP-111, before 10/27/2023.

You may contact me at the number above if you have questions.

Very truly yours,

Michael Maier"