

KANSAS CORPORATION COMMISSION
OIL & GAS CONSERVATION DIVISION

TEMPORARY ABANDONMENT WELL APPLICATION

OPERATOR: License#
Name:
Address 1:
Address 2:
City: State: Zip:
Contact Person:
Phone:
Contact Person Email:
Field Contact Person:
Field Contact Person Phone:

API No. 15-
Spot Description:
Sec. Twp. S. R.
GPS Location: Lat: Long:
Datum: NAD27 NAD83 WGS84
County: Elevation:
Lease Name: Well #:
Well Type: Oil Gas OG WSW Other:
SWD Permit #: ENHR Permit #:
Gas Storage Permit #:
Spud Date: Date Shut-In:

Table with 7 columns: Conductor, Surface, Production, Intermediate, Liner, Tubing. Rows include Size, Setting Depth, Amount of Cement, Top of Cement, Bottom of Cement.

Casing Fluid Level from Surface: How Determined? Date:
Casing Squeeze(s): to w / sacks of cement, to w / sacks of cement. Date:
Do you have a valid Oil & Gas Lease? Yes No
Depth and Type: Junk in Hole at Tools in Hole at Casing Leaks: Yes No Depth of casing leak(s):
Type Completion: ALT. I ALT. II Depth of: DV Tool: w / sacks of cement Port Collar: w / sack of cement
Packer Type: Size: Inch Set at: Feet
Total Depth: Plug Back Depth: Plug Back Method:

Geological Data:

Table with 4 columns: Formation Name, Formation Top, Formation Base, Completion Information. Rows 1 and 2.

UNDER PENALTY OF PERJURY I HEREBY ATTEST THAT THE INFORMATION CONTAINED HEREIN IS TRUE AND CORRECT TO THE BEST OF MY KNOWLEDGE

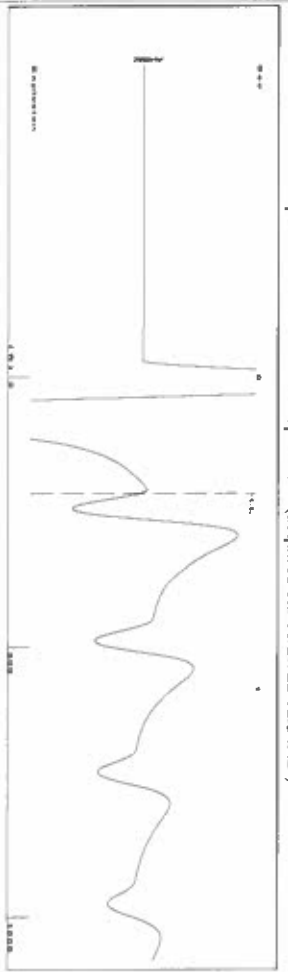
Submitted Electronically

Do NOT Write in This Space - KCC USE ONLY
Date Tested: Results: Date Plugged: Date Repaired: Date Put Back in Service:
Review Completed by: Comments:
TA Approved: Yes Denied Date:

Mail to the Appropriate KCC Conservation Office:

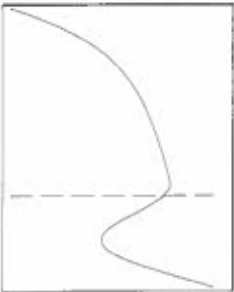
Table with 3 columns: District Office, Address, Phone. Rows for District Office #1, #2, #3, #4.

Group: SUBLETTE Well: Hopkins 2-9 (acquired on: 10/27/22 12:34:42 )



Liquid level calculated with user supplied Acoustic Velocity

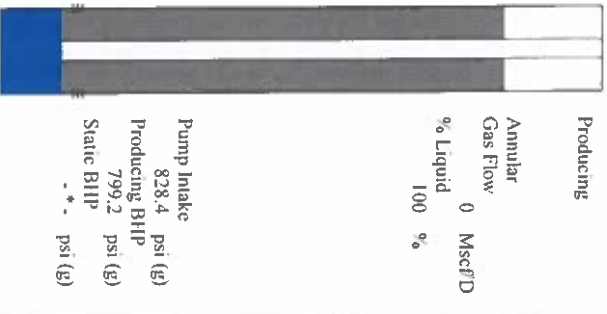
Acoustic Velocity 1150 ft/s



**Analysis Method: Acoustic Velocity**

Group: SUBLETTE Well: Hopkins 2-9 (acquired on: 10/27/22 12:34:42 )

Production Current	Potential	Casing Pressure	Producing
Oil -*-	BBL/D	0.0 psi (g)	Annular Gas Flow
Water -*-	BBL/D	Casing Pressure Buildup	% Liquid
Gas -*-	Mscf/D	0.011 psi	100 %
IPR Method	Vogel	Gas/Liquid Interface Pressure	
PBHP/SBHP	-*-	0.1 psi (g)	
Production Efficiency	0.0	Liquid Level Depth	
Oil 40 deg/API		216.78 ft	
Water 1.05 Sp.Gr:H2O		Pump Intake Depth	
Gas 0.85 Sp.Gr:AIR		2704.00 ft	
Acoustic Velocity	1150 ft/s	Formation Depth	
		2611.00 ft	



Formation Submergence  
 Total Gaseous Liquid Column HT (TVD) 2487 ft  
 Equivalent Gas Free Liquid HT (TVD) 2487 ft  
 10/27/22A

Group: SUBLETTE Well: Hopkins 2-9 (acquired on: 10/27/22 12:34:42 )



Change in Pressure 0.01 psi  
 Change in Time 1.00 min  
 PT16716 Range  
 0 - ? psi

Group: SUBLETTE Well: Hopkins 2-9 (acquired on: 10/27/22 12:34:42 )

**Entered Acoustic Velocity for Liquid Level depth determination**

November 01, 2022

Katherine McClurkan  
Merit Energy Company, LLC  
13727 Noel Road, Suite 1200  
Dallas, TX 75240-7362

Re: Temporary Abandonment  
API 15-175-20316-00-00  
Hopkins 2-9  
NW/4 Sec.09-31S-33W  
Seward County, Kansas

Dear Katherine McClurkan:

"Your temporary abandonment (TA) application for the well listed above has been approved. In accordance with K.A.R. 82-3-111 the TA status of this well will expire 11/01/2023.

- \* If you return this well to service or plug it, please notify the District Office.
- \* If you sell this well you are required to file a Transfer of Operator form, T-1.
- \* If the well will remain temporarily abandoned, you must submit a new TA application, CP-111, before 11/01/2023.

You may contact me at the number above if you have questions.

Very truly yours,

Michael Maier"