

KANSAS CORPORATION COMMISSION
OIL & GAS CONSERVATION DIVISION

TEMPORARY ABANDONMENT WELL APPLICATION

OPERATOR: License#
Name:
Address 1:
Address 2:
City: State: Zip:
Contact Person:
Phone:
Contact Person Email:
Field Contact Person:
Field Contact Person Phone:

API No. 15-
Spot Description:
Sec. Twp. S. R.
GPS Location: Lat: Long:
Datum: NAD27 NAD83 WGS84
County: Elevation:
Lease Name: Well #:
Well Type: Oil Gas OG WSW Other:
SWD Permit #: ENHR Permit #:
Gas Storage Permit #:
Spud Date: Date Shut-In:

Table with 7 columns: Conductor, Surface, Production, Intermediate, Liner, Tubing. Rows include Size, Setting Depth, Amount of Cement, Top of Cement, Bottom of Cement.

Casing Fluid Level from Surface: How Determined? Date:
Casing Squeeze(s): to w / sacks of cement, to w / sacks of cement. Date:
Do you have a valid Oil & Gas Lease? Yes No
Depth and Type: Junk in Hole at Tools in Hole at Casing Leaks: Yes No Depth of casing leak(s):
Type Completion: ALT. I ALT. II Depth of: DV Tool: w / sacks of cement Port Collar: w / sack of cement
Packer Type: Size: Inch Set at: Feet
Total Depth: Plug Back Depth: Plug Back Method:

Geological Data:

Table with 4 columns: Formation Name, Formation Top, Formation Base, Completion Information. Rows 1 and 2.

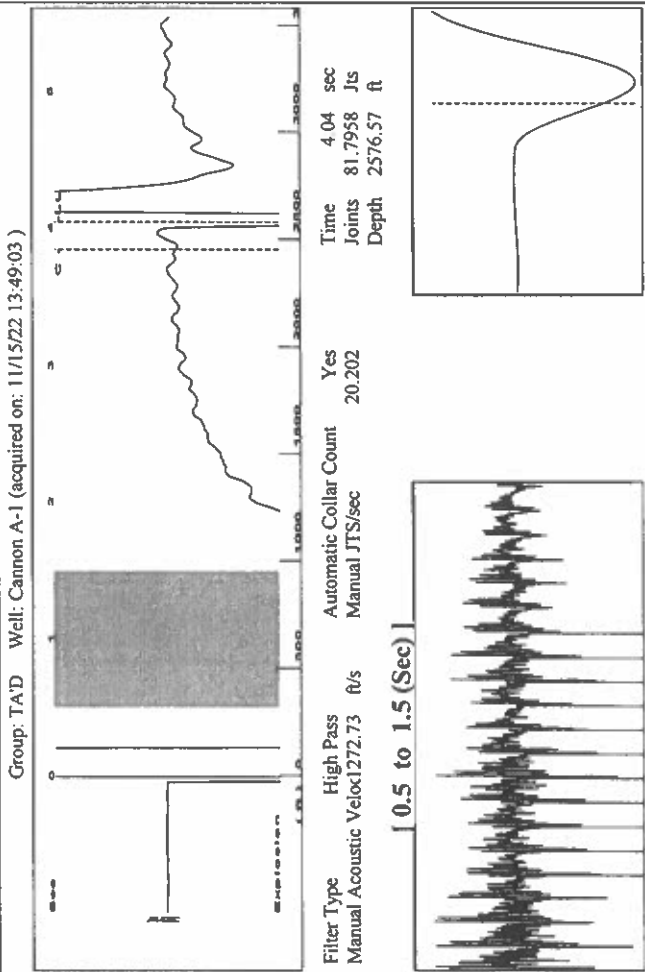
UNDER PENALTY OF PERJURY I HEREBY ATTEST THAT THE INFORMATION CONTAINED HEREIN IS TRUE AND CORRECT TO THE BEST OF MY KNOWLEDGE

Submitted Electronically

Do NOT Write in This Space - KCC USE ONLY
Date Tested: Results: Date Plugged: Date Repaired: Date Put Back in Service:
Review Completed by: Comments:
TA Approved: Yes Denied Date:

Mail to the Appropriate KCC Conservation Office:

Table with 3 columns: District Office, Address, Phone. Rows for District Office #1, #2, #3, #4.



Analysis Method: Automatic

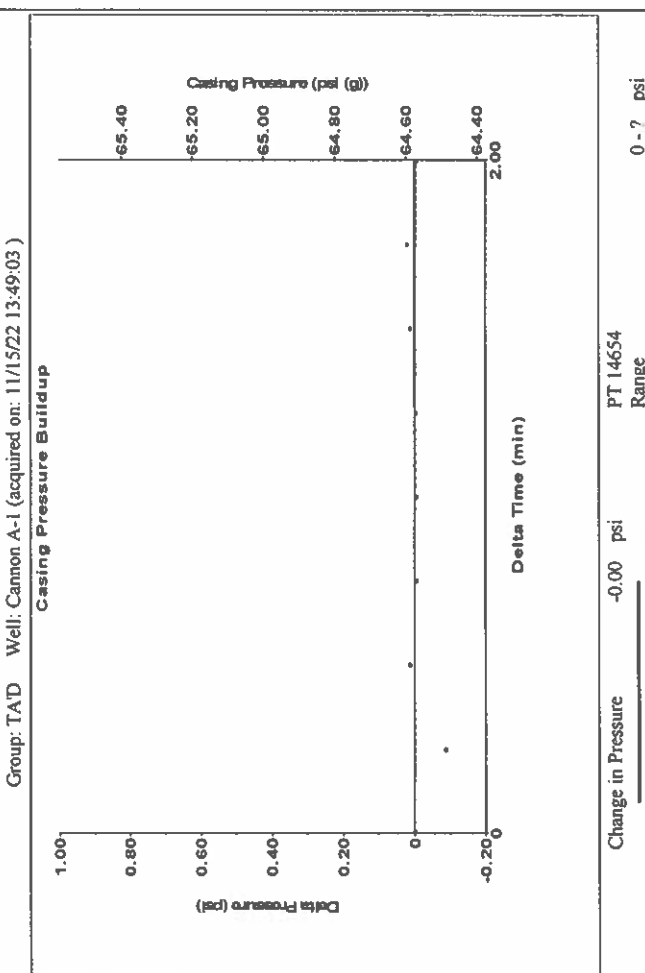
Group: TAD Well: Cannon A-1 (acquired on: 11/15/22 13:49:03)

Potential	---	BBL/D	64.6	psi (g)	Casing Pressure
Oil	---	BBL/D	-0.005	psi	Casing Pressure Buildup
Water	---	Mscf/D	2.00	min	Gas/Liquid Interface Pressure
Gas	---		69.7	psi (g)	
IPR Method	Vogel				Liquid Level Depth
PBHP/SBHP	---				2576.57 ft
Production Efficiency	0.0				Pump Intake Depth
Oil	40	deg API			2646.00 ft
Water	1.05	Sp.Gr.H2O			Formation Depth
Gas	0.73	Sp.Gr.AIR			2534.00 ft
Acoustic Velocity	1275.53	ft/s			

Formation Submergence	69	ft
Total Gaseous Liquid Column HT (TVD)	69	ft
Equivalent Gas Free Liquid HT (TVD)		
Acoustic Test		

Producing	
Annular Gas Flow	0 Mscf/D
% Liquid	100 %

Pump Intake	93.1	psi (g)
Producing BHP	69.6	psi (g)
Static BHP	---	psi (g)



Group: TAD Well: Cannon A-1 (acquired on: 11/15/22 13:49:03)

20.18

20.30

Acoustic Velocity	1275.53	ft/s	Joints counted	69
Joints Per Second	20.2465	jts/sec	Joints to liquid level	81.7958
Depth to liquid level	2576.57	ft	Filter Width	18.202
Automatic Collar Count	Yes		Time to 1st Collar	0.432
				22.202
				3.84

Conservation Division
District Office No. 1
210 E. Frontview, Suite A
Dodge City, KS 67801



Phone: 620-682-7933
<http://kcc.ks.gov/>

Dwight D. Keen, Chair
Susan K. Duffy, Commissioner
Andrew J. French, Commissioner

Laura Kelly, Governor

November 18, 2022

Katherine McClurkan
Merit Energy Company, LLC
13727 Noel Road, Suite 1200
Dallas, TX 75240-7362

Re: Temporary Abandonment
API 15-093-21376-00-01
Cannon A 3
SE/4 Sec.23-23S-35W
Kearny County, Kansas

Dear Katherine McClurkan:

"Your temporary abandonment (TA) application for the well listed above has been approved. In accordance with K.A.R. 82-3-111 the TA status of this well will expire 11/18/2023.

- * If you return this well to service or plug it, please notify the District Office.
- * If you sell this well you are required to file a Transfer of Operator form, T-1.
- * If the well will remain temporarily abandoned, you must submit a new TA application, CP-111, before 11/18/2023.

You may contact me at the number above if you have questions.

Very truly yours,

Michael Maier"