

KANSAS CORPORATION COMMISSION
OIL & GAS CONSERVATION DIVISION

TEMPORARY ABANDONMENT WELL APPLICATION

OPERATOR: License#
Name:
Address 1:
Address 2:
City: State: Zip:
Contact Person:
Phone:
Contact Person Email:
Field Contact Person:
Field Contact Person Phone:

API No. 15-
Spot Description:
Sec. Twp. S. R.
feet from N / S Line of Section
feet from E / W Line of Section
GPS Location: Lat: , Long:
Datum: NAD27 NAD83 WGS84
County: Elevation: GL KB
Lease Name: Well #:
Well Type: (check one) Oil Gas OG WSW Other:
SWD Permit #: ENHR Permit #:
Gas Storage Permit #:
Spud Date: Date Shut-In:

Table with 7 columns: Conductor, Surface, Production, Intermediate, Liner, Tubing. Rows include Size, Setting Depth, Amount of Cement, Top of Cement, Bottom of Cement.

Casing Fluid Level from Surface: How Determined? Date:
Casing Squeeze(s): to w / sacks of cement, to w / sacks of cement. Date:
Do you have a valid Oil & Gas Lease? Yes No
Depth and Type: Junk in Hole at Tools in Hole at Casing Leaks: Yes No Depth of casing leak(s):
Type Completion: ALT. I ALT. II Depth of: DV Tool: w / sacks of cement Port Collar: w / sack of cement
Packer Type: Size: Inch Set at: Feet
Total Depth: Plug Back Depth: Plug Back Method:

Geological Data:

Table with 4 columns: Formation Name, Formation Top, Formation Base, Completion Information. Rows 1 and 2.

UNDER PENALTY OF PERJURY I HEREBY ATTEST THAT THE INFORMATION CONTAINED HEREIN IS TRUE AND CORRECT TO THE BEST OF MY KNOWLEDGE

Submitted Electronically

Do NOT Write in This Space - KCC USE ONLY
Date Tested: Results: Date Plugged: Date Repaired: Date Put Back in Service:
Review Completed by: Comments:
TA Approved: Yes Denied Date:

Mail to the Appropriate KCC Conservation Office:

Table with 2 columns: Office Address, Phone. Rows for District Office #1, #2, #3, #4.

Liquid Level

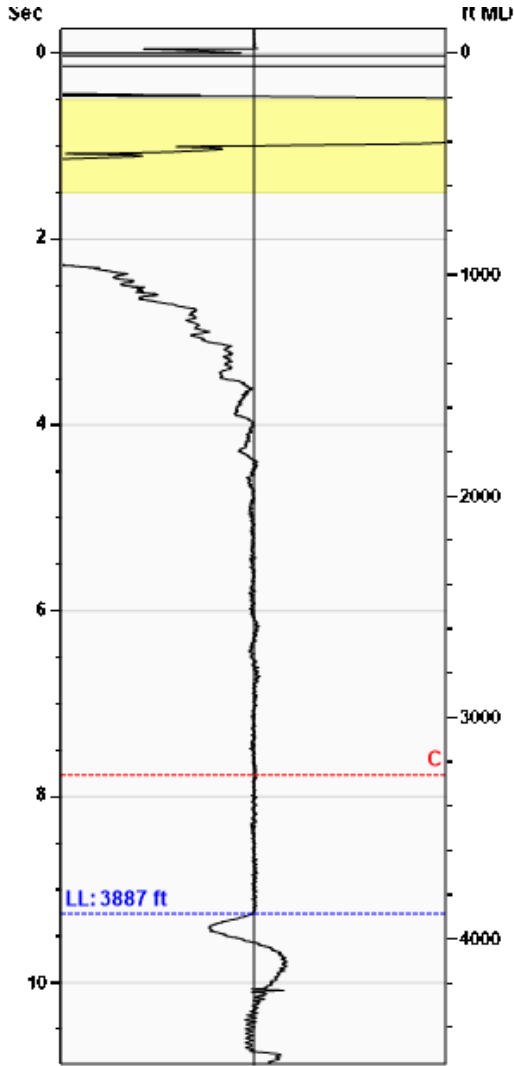
3887 ft MD

Fluid Above Pump

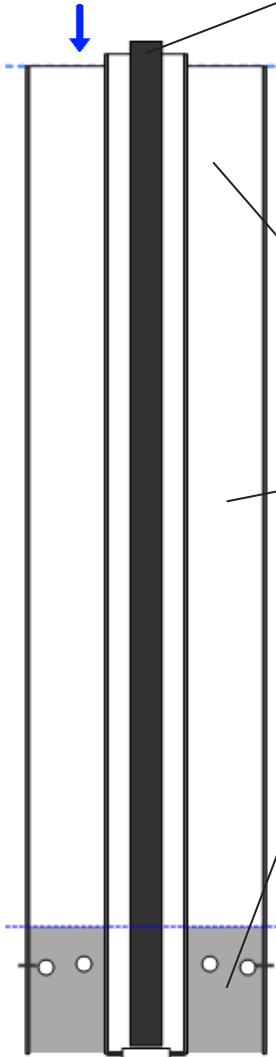
574 ft TVD

Equivalent Gas Free Above Pump

524 ft TVD



Gun - CG 13203



Production

Date Entered	11/11/22		
	Current	Potential	
Oil	**	**	BBL/D
Water	**	**	BBL/D
Gas	**	**	Mscf/D
IPR Method	Vogel		
PBHP/SBHP	4.50		
Producing Efficiency	0.00%		

Casing Pressure

Pressure	12.2 psi (g)
----------	--------------

Annular Gas Flow

Gas Flow	5.3 Mscf/D
----------	------------

Fluid Properties

% Liquid Above Pump	72.69%
% Liquid Below Pump	**

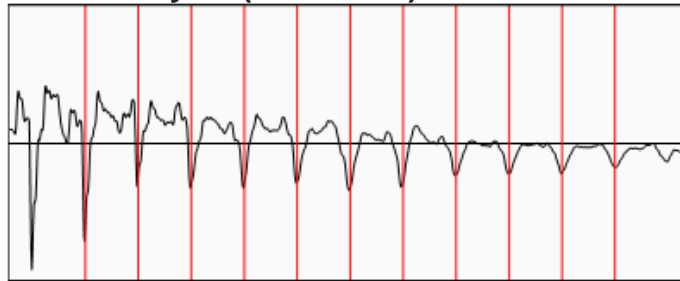
Depths

Pump Intake Depth	4461 ft
Formation Depth	4070 ft

Wellbore Pressures

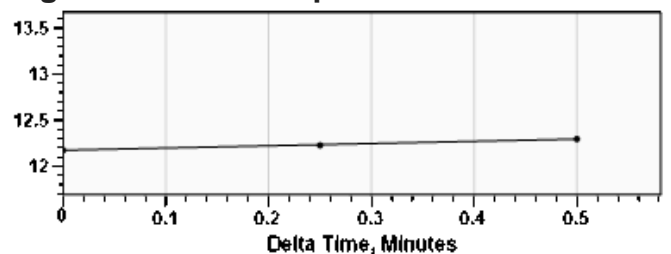
PIP	195.2 psi (g)
PBHP	62.2 psi (g)
SBHP	13.8 psi (g)
Gas/Liq Interface	16.4 psi (g)

Collar Analysis (Automatic)



Average Acoustic Velocity	840 ft/s
Average Joints Per Sec.	13.24 Jts/sec
Joints To Liquid	122.62 Jts

Casing Pressure Buildup



Casing Pressure	12.2 psi (g)
Buildup	0.1 psi (g)
Buildup Time	30 sec
Gas Gravity from Collar Analysis (Automatic)	1.1325 Air = 1

Comments and Recommendations

600psi - Acoustic Test

Echometer Company
 5001 Ditto Lane
 Wichita Falls, TX 76302
 (940) 767-4334
 info@echometer.com

Conservation Division
District Office No. 4
2301 E. 13th Street
Hays, KS 67601-2651



Phone: 785-261-6250
Fax: 785-625-0564
<http://kcc.ks.gov/>

Dwight D. Keen, Chair
Susan K. Duffy, Commissioner
Andrew J. French, Commissioner

Laura Kelly, Governor

November 21, 2022

Ted McHenry
Raymond Oil Company, Inc.
PO BOX 48788
WICHITA, KS 67201-8788

Re: Temporary Abandonment
API 15-109-20938-00-00
ROSE C 1
SE/4 Sec.11-14S-32W
Logan County, Kansas

Dear Ted McHenry:

"Your temporary abandonment (TA) application for the well listed above has been approved. In accordance with K.A.R. 82-3-111 the TA status of this well will expire 11/21/2023.

- * If you return this well to service or plug it, please notify the District Office.
- * If you sell this well you are required to file a Transfer of Operator form, T-1.
- * If the well will remain temporarily abandoned, you must submit a new TA application, CP-111, before 11/21/2023.

You may contact me at the number above if you have questions.

Very truly yours,

RICHARD WILLIAMS"