

KANSAS CORPORATION COMMISSION
OIL & GAS CONSERVATION DIVISION

TEMPORARY ABANDONMENT WELL APPLICATION

OPERATOR: License#
Name:
Address 1:
Address 2:
City: State: Zip:
Contact Person:
Phone:
Contact Person Email:
Field Contact Person:
Field Contact Person Phone:

API No. 15-
Spot Description:
Sec. Twp. S. R.
GPS Location: Lat: Long:
Datum:
County: Elevation:
Lease Name: Well #:
Well Type:
SWD Permit #: ENHR Permit #:
Gas Storage Permit #:
Spud Date: Date Shut-In:

Table with 7 columns: Conductor, Surface, Production, Intermediate, Liner, Tubing. Rows include Size, Setting Depth, Amount of Cement, Top of Cement, Bottom of Cement.

Casing Fluid Level from Surface: How Determined? Date:
Casing Squeeze(s): to w / sacks of cement, to w / sacks of cement. Date:
Do you have a valid Oil & Gas Lease?
Depth and Type: Junk in Hole at Tools in Hole at Casing Leaks:
Type Completion: ALT. I ALT. II Depth of: DV Tool: Port Collar:
Packer Type: Size: Inch Set at: Feet
Total Depth: Plug Back Depth: Plug Back Method:

Geological Data:

Table with 4 columns: Formation Name, Formation Top, Formation Base, Completion Information. Rows 1 and 2.

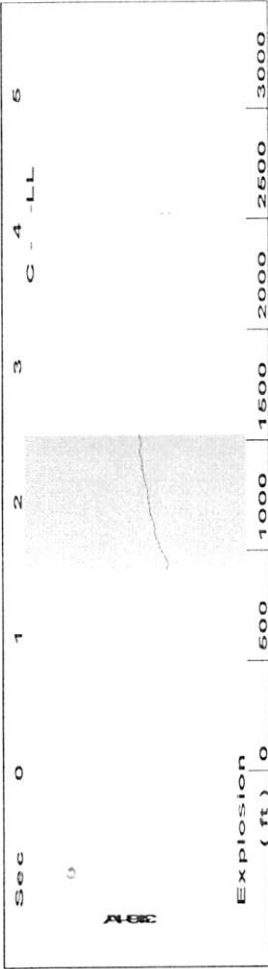
UNDER PENALTY OF PERJURY I HEREBY ATTEST THAT THE INFORMATION CONTAINED HEREIN IS TRUE AND CORRECT TO THE BEST OF MY KNOWLEDGE

Submitted Electronically

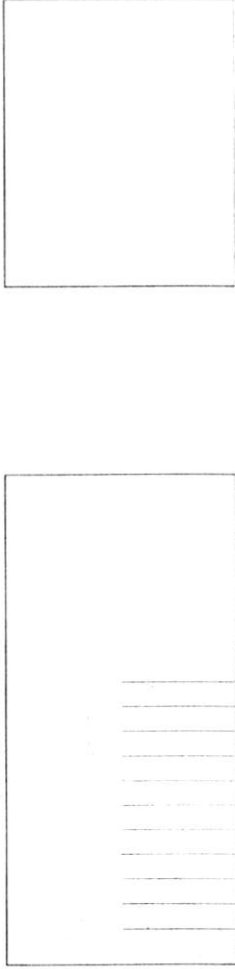
Do NOT Write in This Space - KCC USE ONLY
Date Tested: Results: Date Plugged: Date Repaired: Date Put Back in Service:
Review Completed by: Comments:
TA Approved: Yes Denied Date:

Mail to the Appropriate KCC Conservation Office:

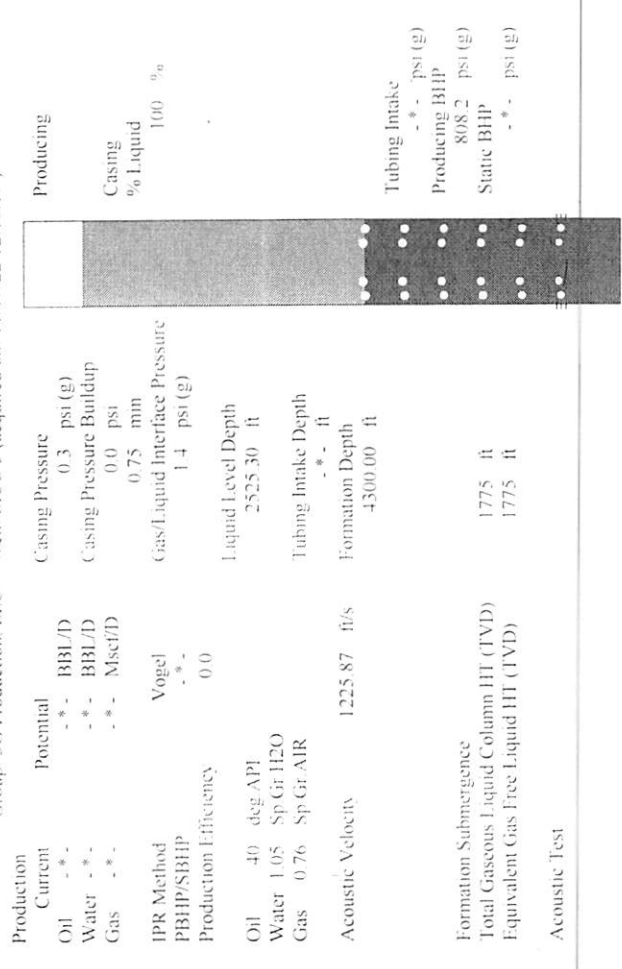
Table with 2 columns: Office Address, Phone. Rows for District Office #1, #2, #3, #4.



Filter Type High Pass Automatic Collar Count Yes
 Manual Acoustic Velo 1255.45 ft/s Manual JTS/sec 19.802
 Time 4.12 sec
 Joints 79.6623 Jts
 Depth 2525.30 ft



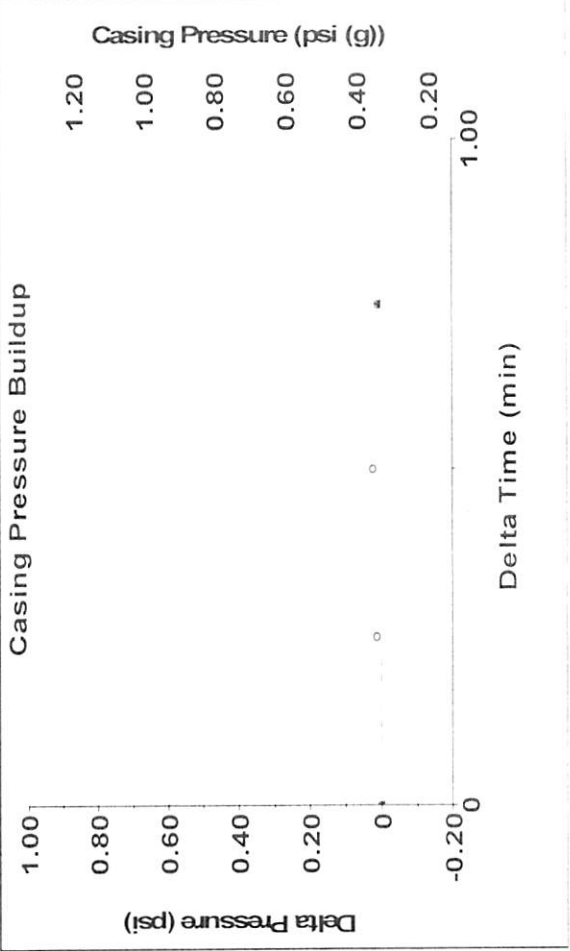
Analysis Method: Automatic



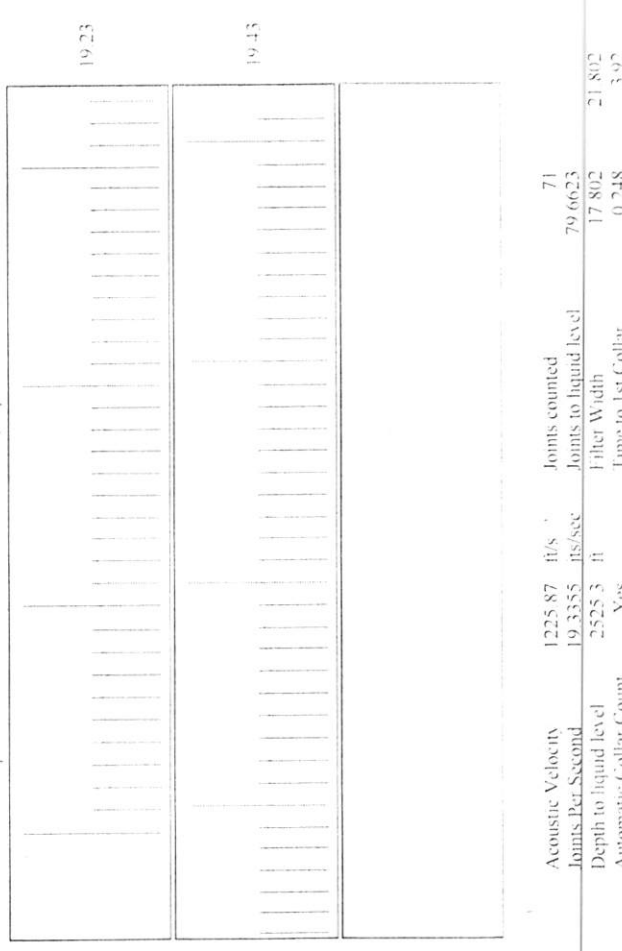
Production Current Potential Casing Pressure 0.3 psi (g)
 Oil - * - BBL/D
 Water - * - BBL/D
 Gas - * - Mscf/D
 IPR Method Vogel
 PBHP/SBHP - * -
 Production Efficiency 0.0
 Oil 40 deg API
 Water 1.05 Sp Gr H2O
 Gas 0.76 Sp Gr AIR
 Acoustic Velocity 1225.87 ft/s
 Formation Depth 4300.00 ft
 Liquid Level Depth 2525.30 ft
 Tubing Intake Depth - * - ft
 Formation Submergence 1775 ft
 Total Gaseous Liquid Column HT (TVD) 1775 ft
 Equivalent Gas Free Liquid HT (TVD) 1775 ft

Acoustic Test

Producing
 Casing % Liquid 100 %
 Tubing Intake - * - psi (g)
 Producing BHP 808.2 psi (g)
 Static BHP - * - psi (g)



Change in Pressure 0.01 psi PITS-469 Range
 Change in Time 0.75 min



Acoustic Velocity 1225.87 ft/s Joints counted 71
 Joints Per Second 19.3355 ft/sec Joints to liquid level 79.6623
 Depth to liquid level 2525.3 ft Filter Width 17.802
 Automatic Collar Count Yes Time to 1st Collar 0.248 3.92

November 23, 2022

Kenneth C Gates
Iuka-Carmi Development LLC
PO BOX 847
PRATT, KS 67124-0847

Re: Temporary Abandonment
API 15-151-10241-00-02
SICU 5
NW/4 Sec.18-27S-12W
Pratt County, Kansas

Dear Kenneth C Gates:

"Your temporary abandonment (TA) application for the well listed above has been approved. In accordance with K.A.R. 82-3-111 the TA status of this well will expire 11/23/2023.

- * If you return this well to service or plug it, please notify the District Office.
- * If you sell this well you are required to file a Transfer of Operator form, T-1.
- * If the well will remain temporarily abandoned, you must submit a new TA application, CP-111, before 11/23/2023.

You may contact me at the number above if you have questions.

Very truly yours,

Michael Maier"