

KANSAS CORPORATION COMMISSION
OIL & GAS CONSERVATION DIVISION

TEMPORARY ABANDONMENT WELL APPLICATION

OPERATOR: License#
Name:
Address 1:
Address 2:
City: State: Zip:
Contact Person:
Phone:
Contact Person Email:
Field Contact Person:
Field Contact Person Phone:

API No. 15-
Spot Description:
Sec. Twp. S. R.
GPS Location: Lat: Long:
Datum:
County: Elevation:
Lease Name: Well #:
Well Type:
SWD Permit #: ENHR Permit #:
Gas Storage Permit #:
Spud Date: Date Shut-In:

Table with 7 columns: Conductor, Surface, Production, Intermediate, Liner, Tubing. Rows include Size, Setting Depth, Amount of Cement, Top of Cement, Bottom of Cement.

Casing Fluid Level from Surface: How Determined? Date:
Casing Squeeze(s): to w / sacks of cement, to w / sacks of cement. Date:
Do you have a valid Oil & Gas Lease? Yes No
Depth and Type: Junk in Hole at Tools in Hole at Casing Leaks: Yes No Depth of casing leak(s):
Type Completion: ALT. I ALT. II Depth of: DV Tool: w / sacks of cement Port Collar: w / sack of cement
Packer Type: Size: Inch Set at: Feet
Total Depth: Plug Back Depth: Plug Back Method:

Geological Data:

Table with 4 columns: Formation Name, Formation Top, Formation Base, Completion Information. Rows 1 and 2.

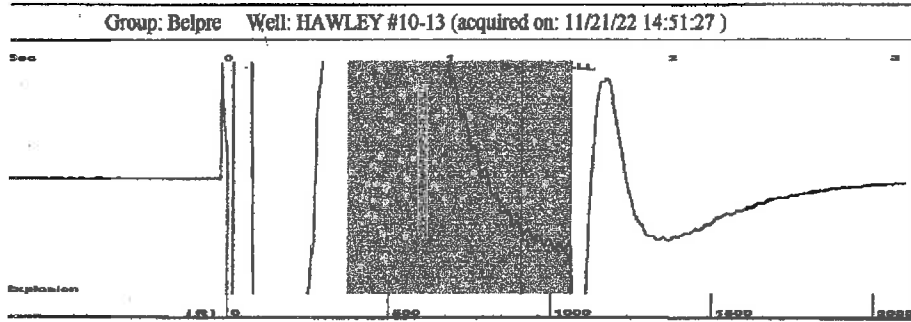
UNDER PENALTY OF PERJURY I HEREBY ATTEST THAT THE INFORMATION CONTAINED HEREIN IS TRUE AND CORRECT TO THE BEST OF MY KNOWLEDGE

Submitted Electronically

Do NOT Write in This Space - KCC USE ONLY
Date Tested: Results: Date Plugged: Date Repaired: Date Put Back in Service:
Review Completed by: Comments:
TA Approved: Yes Denied Date:

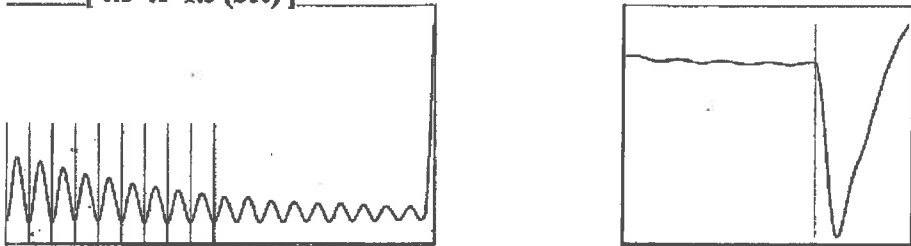
Mail to the Appropriate KCC Conservation Office:

Table with 2 columns: Office Address, Phone. Rows for District Office #1, #2, #3, #4.

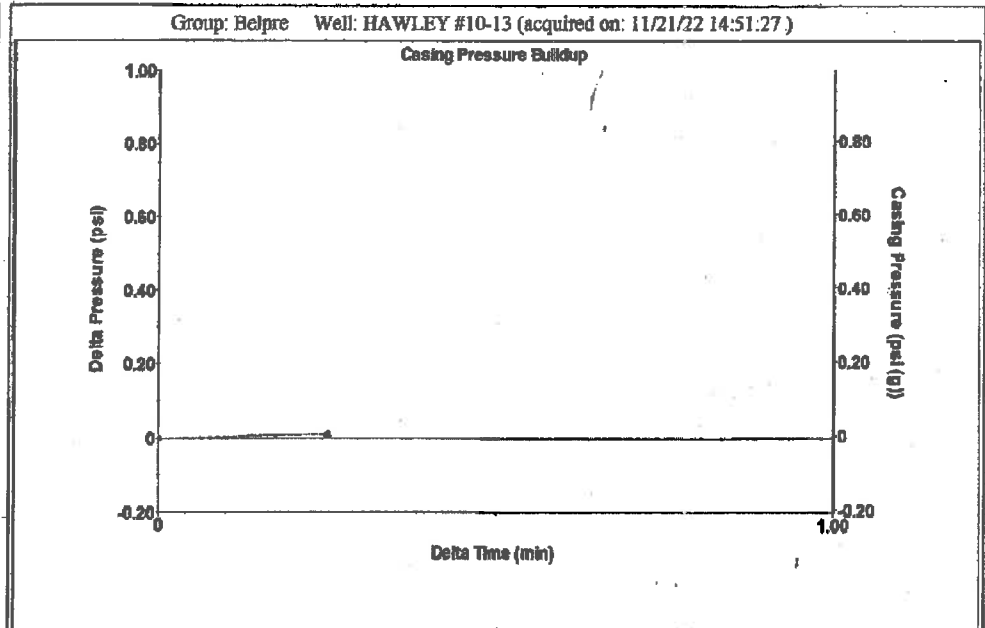


Type High Pass Automatic Collar Count Yes Time 1.543 sec
 if Acoustic Velo 1373.89 ft/s Manual JTS/sec 21.0526 Joints 32.5153 Jts
 Depth 1060.98 ft

[0.5 to 1.5 (Sec)]



Analysis Method: Automatic



Change in Pressure 0.01 psi PT13440
 Range 0 - ? psi
 Change in Time 0.25 min

Group: Belpre Well: HAWLEY #10-13 (acquired on: 11/21/22 14:51:27)

action Current	Potential	Casing Pressure	Producing
-*	-*	-0.0 psi (g)	
-*	-*	Casing Pressure Buildup	
-*	-*	0.0 psi	
		0.25 min	
Method	Vogel	Gas/Liquid Interface Pressure	Annular Gas Flow
P/SBHP	-*	0.3 psi (g)	0 Mscf/D
action Efficiency	0.0		% Liquid
			100 %
40 deg.API		Liquid Level Depth	
r 1.05 Sp.Gr.H2O		1060.98 ft	
0.62 Sp.Gr.AIR		Pump Intake Depth	
		4340.00 ft	
Acoustic Velocity	1375.21 ft/s	Formation Depth	
		4292.00 ft	
ation Submergence		Pump Intake	
Gaseous Liquid Column HT (TVD)	3279 ft	1079.7 psi (g)	
ivalent Gas Free Liquid HT (TVD)	3279 ft	Producing BHP	
		1064.8 psi (g)	
istic Test		Static BHP	
		-* psi (g)	

Group: Belpre Well: HAWLEY #10-13 (acquired on: 11/21/22 14:51:27)

21.07

Acoustic Velocity	1375.21 ft/s	Joints counted	22
Joints Per Second	21.0728 jts/sec	Joints to liquid level	32.5153
Depth to liquid level	1060.98 ft	Filter Width	19.0526 23.0526
Automatic Collar Count	Yes	Time to 1st Collar	0.276 1.32

November 23, 2022

Loveness Mpanje
F. G. Holl Company L.L.C.
9431 E CENTRAL STE 100
WICHITA, KS 67206-2563

Re: Temporary Abandonment
API 15-047-21316-00-00
HAWLEY 10-13
NE/4 Sec.13-24S-17W
Edwards County, Kansas

Dear Loveness Mpanje:

"Your temporary abandonment (TA) application for the well listed above has been approved. In accordance with K.A.R. 82-3-111 the TA status of this well will expire 11/23/2023.

- * If you return this well to service or plug it, please notify the District Office.
- * If you sell this well you are required to file a Transfer of Operator form, T-1.
- * If the well will remain temporarily abandoned, you must submit a new TA application, CP-111, before 11/23/2023.

You may contact me at the number above if you have questions.

Very truly yours,

Michael Maier"