

KANSAS CORPORATION COMMISSION
OIL & GAS CONSERVATION DIVISION

TEMPORARY ABANDONMENT WELL APPLICATION

OPERATOR: License#
Name:
Address 1:
Address 2:
City: State: Zip:
Contact Person:
Phone:
Contact Person Email:
Field Contact Person:
Field Contact Person Phone:

API No. 15-
Spot Description:
Sec. Twp. S. R.
GPS Location: Lat: Long:
Datum: NAD27 NAD83 WGS84
County: Elevation:
Lease Name: Well #:
Well Type: Oil Gas OG WSW Other:
SWD Permit #: ENHR Permit #:
Gas Storage Permit #:
Spud Date: Date Shut-In:

Table with 7 columns: Conductor, Surface, Production, Intermediate, Liner, Tubing. Rows include Size, Setting Depth, Amount of Cement, Top of Cement, Bottom of Cement.

Casing Fluid Level from Surface: How Determined? Date:
Casing Squeeze(s): to w / sacks of cement, to w / sacks of cement. Date:
Do you have a valid Oil & Gas Lease? Yes No
Depth and Type: Junk in Hole at Tools in Hole at Casing Leaks: Yes No Depth of casing leak(s):
Type Completion: ALT. I ALT. II Depth of: DV Tool: w / sacks of cement Port Collar: w / sack of cement
Packer Type: Size: Inch Set at: Feet
Total Depth: Plug Back Depth: Plug Back Method:

Geological Data:

Table with 4 columns: Formation Name, Formation Top, Formation Base, Completion Information. Rows 1 and 2.

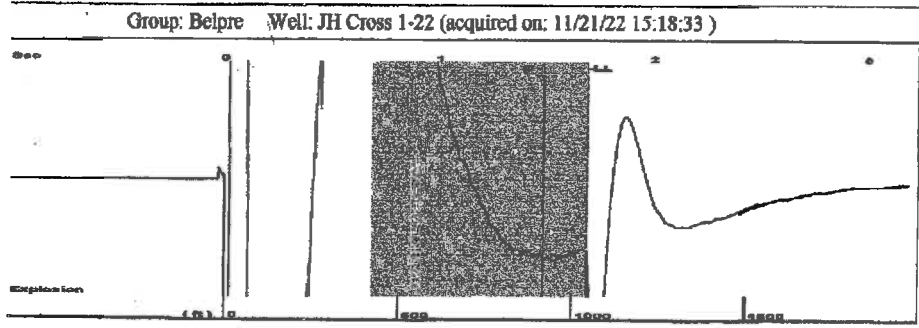
UNDER PENALTY OF PERJURY I HEREBY ATTEST THAT THE INFORMATION CONTAINED HEREIN IS TRUE AND CORRECT TO THE BEST OF MY KNOWLEDGE

Submitted Electronically

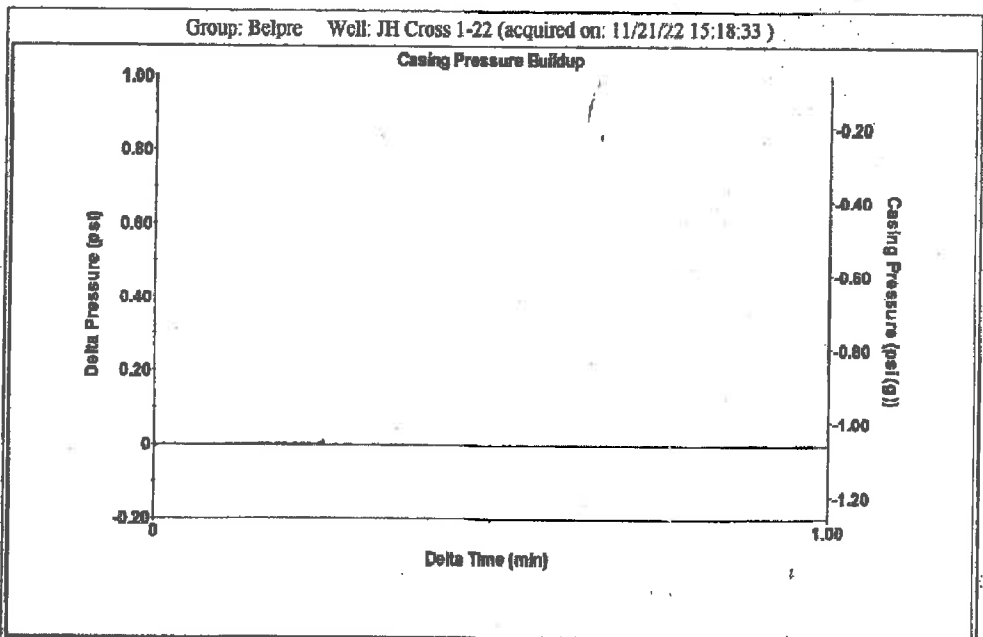
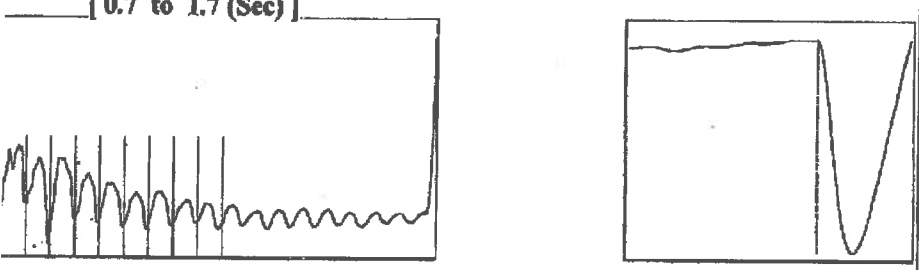
Do NOT Write in This Space - KCC USE ONLY
Date Tested: Results: Date Plugged: Date Repaired: Date Put Back in Service:
Review Completed by: Comments:
TA Approved: Yes Denied Date:

Mail to the Appropriate KCC Conservation Office:

Table with 2 columns: Office Address, Phone. Rows for District Office #1, #2, #3, #4.



Type High Pass Automatic Collar Count Yes Time 1.689 sec
 al Acoustic Velo 1236.58 ft/s Manual JTS/sec 19,8807 Joints 33.5563 Jts
 Depth 1043.60 ft

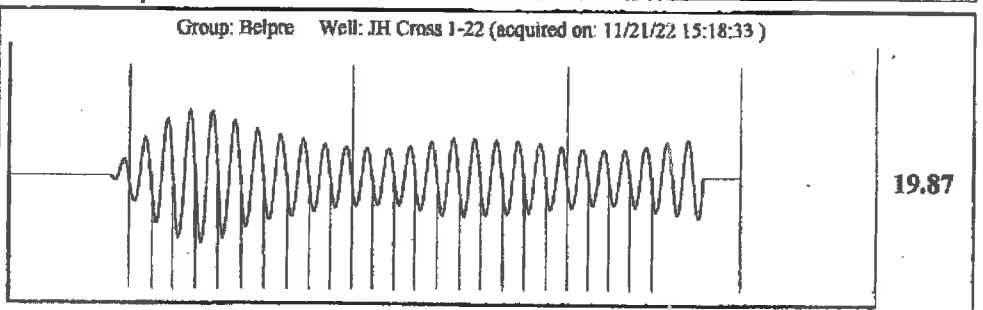


Change in Pressure 0.00 psi PT13440
 Change in Time 0.25 min Range 0 - ? psi

Analysis Method: Automatic

Group: Belpre Well: JH Cross 1-22 (acquired on: 11/21/22 15:18:33)

Production Current	Potential	Casing Pressure	Producing
-*-	-*- BBL/D	-1.1 psi (g)	
er -*-	-*- BBL/D	Casing Pressure Buildup	Annular Gas Flow
-*-	-*- Mscf/D	0.0 psi	0 Mscf/D
		0.25 min	% Liquid
Method	Vogel	Gas/Liquid Interface Pressure	100 %
IP/SBHP	-*-	-0.7 psi (g)	
Production Efficiency	0.0		
40 deg API		Liquid Level Depth	
er 1.05 Sp.Gr.H2O		1043.60 ft	
0.74 Sp.Gr.AIR		Pump Intake Depth	
		4293.00 ft	
Acoustic Velocity	1235.76 ft/s	Formation Depth	
		4295.00 ft	
Production Submergence		Pump Intake	
1 Gaseous Liquid Column HT (TVD)	3249 ft	1067.7 psi (g)	
ivalent Gas Free Liquid HT (TVD)	3249 ft	Producing BHP	
		1068.6 psi (g)	
		Static BHP	
		-*- psi (g)	



Acoustic Velocity	1235.76 ft/s	Joints counted	24
Joints Per Second	19.8675 jts/sec	Joints to liquid level	33.5563
Depth to liquid level	1043.6 ft	Filter Width	17.8807 21.8807
Automatic Collar Count	Yes	Time to 1st Collar	0.276 1.484

November 23, 2022

Loveness Mpanje
F. G. Holl Company L.L.C.
9431 E CENTRAL STE 100
WICHITA, KS 67206-2563

Re: Temporary Abandonment
API 15-047-20393-00-00
CROSS J.H. 1-22
NW/4 Sec.22-24S-17W
Edwards County, Kansas

Dear Loveness Mpanje:

"Your temporary abandonment (TA) application for the well listed above has been approved. In accordance with K.A.R. 82-3-111 the TA status of this well will expire 11/23/2023.

- * If you return this well to service or plug it, please notify the District Office.
- * If you sell this well you are required to file a Transfer of Operator form, T-1.
- * If the well will remain temporarily abandoned, you must submit a new TA application, CP-111, before 11/23/2023.

You may contact me at the number above if you have questions.

Very truly yours,

Michael Maier"