

KANSAS CORPORATION COMMISSION
OIL & GAS CONSERVATION DIVISION

TEMPORARY ABANDONMENT WELL APPLICATION

OPERATOR: License# _____
 Name: _____
 Address 1: _____
 Address 2: _____
 City: _____ State: _____ Zip: _____ + _____
 Contact Person: _____
 Phone:(_____) _____
 Contact Person Email: _____
 Field Contact Person: _____
 Field Contact Person Phone: (_____) _____

API No. 15- _____
 Spot Description: _____
 _____ - _____ - _____ - _____ Sec. _____ Twp. _____ S. R. _____ E W
 _____ feet from N / S Line of Section
 _____ feet from E / W Line of Section
 GPS Location: Lat: _____, Long: _____
(e.g. xx.xxxxx) (e.g. -xxx.xxxxx)
 Datum: NAD27 NAD83 WGS84
 County: _____ Elevation: _____ GL KB
 Lease Name: _____ Well #: _____
 Well Type: (check one) Oil Gas OG WSW Other: _____
 SWD Permit #: _____ ENHR Permit #: _____
 Gas Storage Permit #: _____
 Spud Date: _____ Date Shut-In: _____

	Conductor	Surface	Production	Intermediate	Liner	Tubing
Size						
Setting Depth						
Amount of Cement						
Top of Cement						
Bottom of Cement						

Casing Fluid Level from Surface: _____ How Determined? _____ Date: _____
 Casing Squeeze(s): _____ to _____ w / _____ sacks of cement, _____ to _____ w / _____ sacks of cement. Date: _____
(top) (bottom) (top) (bottom)
 Do you have a valid Oil & Gas Lease? Yes No
 Depth and Type: Junk in Hole at _____ Tools in Hole at _____ Casing Leaks: Yes No Depth of casing leak(s): _____
(depth) (depth)
 Type Completion: ALT. I ALT. II Depth of: DV Tool: _____ w / _____ sacks of cement Port Collar: _____ w / _____ sack of cement
(depth) (depth)
 Packer Type: _____ Size: _____ Inch Set at: _____ Feet
 Total Depth: _____ Plug Back Depth: _____ Plug Back Method: _____

Geological Data:

Formation Name	Formation Top	Formation Base	Completion Information
1. _____	At: _____	to _____ Feet	Perforation Interval _____ to _____ Feet or Open Hole Interval _____ to _____ Feet
2. _____	At: _____	to _____ Feet	Perforation Interval _____ to _____ Feet or Open Hole Interval _____ to _____ Feet

UNDER PENALTY OF PERJURY I HEREBY ATTEST THAT THE INFORMATION CONTAINED HEREIN IS TRUE AND CORRECT TO THE BEST OF MY KNOWLEDGE

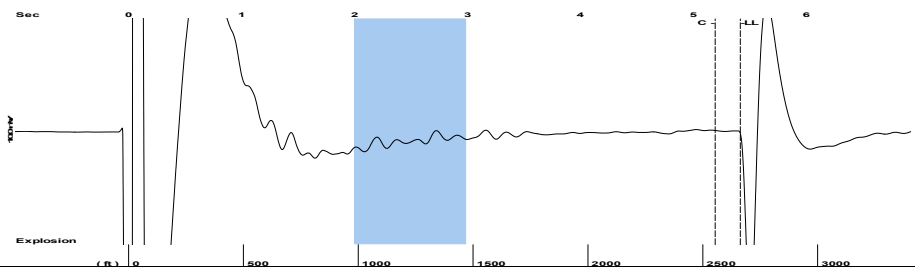
Submitted Electronically

Do NOT Write in This Space - KCC USE ONLY	Date Tested: _____	Results: _____	Date Plugged: _____	Date Repaired: _____	Date Put Back in Service: _____
	Review Completed by: _____ Comments: _____				
TA Approved: <input type="checkbox"/> Yes <input type="checkbox"/> Denied Date: _____					

Mail to the Appropriate KCC Conservation Office:

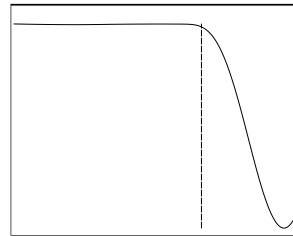
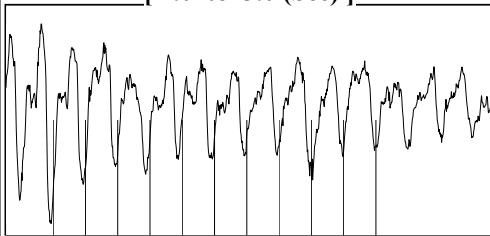
	KCC District Office #1 - 210 E. Frontview, Suite A, Dodge City, KS 67801	Phone 620.682.7933
	KCC District Office #2 - 3450 N. Rock Road, Building 600, Suite 601, Wichita, KS 67226	Phone 316.337.7400
	KCC District Office #3 - 137 E. 21st St., Chanute, KS 66720	Phone 620.902.6450
	KCC District Office #4 - 2301 E. 13th Street, Hays, KS 67601-2651	Phone 785.261.6250

Group: Kansas Well: schowalter 3 (acquired on: 11/25/22 10:14:22)



Filter Type High Pass Automatic Collar Count Yes Time 5.415 sec
 Manual Acoustic Veloc 971.644 ft/s Manual JTS/sec 15.083 Joints 82.6802 Jts
 Depth 2663.13 ft

[2.0 to 3.0 (Sec)]



Analysis Method: Automatic

Group: Kansas Well: schowalter 3 (acquired on: 11/25/22 10:14:22)



Change in Pressure 0.07 psi PT 18318
 Range 0 - ? psi
 Change in Time 1.25 min

Group: Kansas Well: schowalter 3 (acquired on: 11/25/22 10:14:22)

Production Current Potential
 Oil - * - BBL/D
 Water - * - BBL/D
 Gas - * - Mscf/D

IPR Method Vogel
 PBHP/SBHP - * -
 Production Efficiency 0.0

Oil 40 deg.API
 Water 1.05 Sp.Gr.H2O
 Gas 0.70 Sp.Gr.AIR

Acoustic Velocity 983.612 ft/s

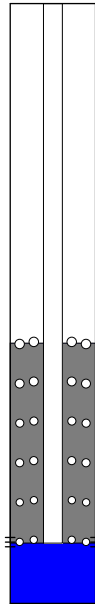
Formation Submergence
 Total Gaseous Liquid Column HT (TVD) 1907 ft
 Equivalent Gas Free Liquid HT (TVD) 1799 ft

Acoustic Test

Casing Pressure -14.7 psi (g)
 Casing Pressure Buildup 0.069 psi
 1.25 min
 Gas/Liquid Interface Pressure -14.7 psi (g)

Liquid Level Depth 2663.13 ft

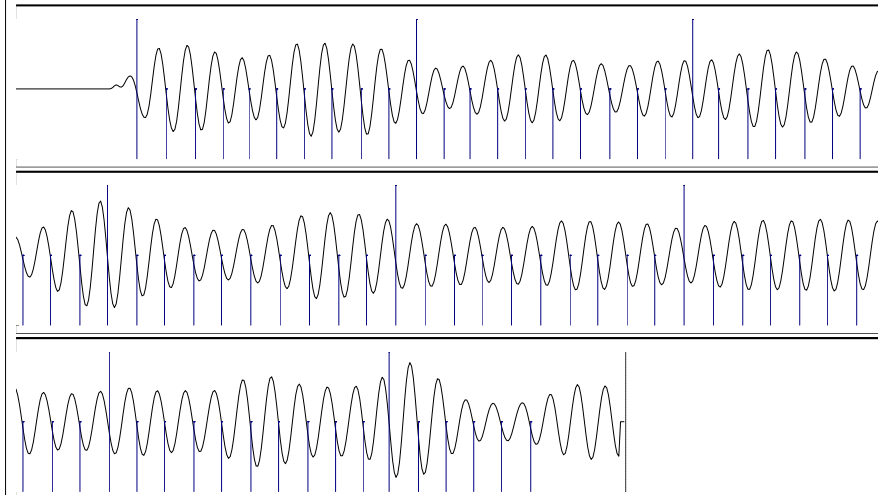
Pump Intake Depth 4570.00 ft
 Formation Depth 4557.00 ft



Producing
 Annular Gas Flow 1 Mscf/D
 % Liquid 94 %

Pump Intake 586.8 psi (g)
 Producing BHP 582.6 psi (g)
 Static BHP - * - psi (g)

Group: Kansas Well: schowalter 3 (acquired on: 11/25/22 10:14:22)



Acoustic Velocity 983.612 ft/s Joints counted 75
 Joints Per Second 15.2687 jts/sec Joints to liquid level 82.6802
 Depth to liquid level 2663.13 ft Filter Width 13.083 17.083
 Automatic Collar Count Yes Time to 1st Collar 0.28 5.192

November 29, 2022

Jeff Scarbrough
Shakespeare Oil Co., Inc.
202 W MAIN ST
SALEM, IL 62881-1519

Re: Temporary Abandonment
API 15-171-20539-00-00
SCHOWALTER ACCT II 3
NW/4 Sec.12-18S-32W
Scott County, Kansas

Dear Jeff Scarbrough:

"Your temporary abandonment (TA) application for the well listed above has been approved. In accordance with K.A.R. 82-3-111 the TA status of this well will expire 11/29/2023.

- * If you return this well to service or plug it, please notify the District Office.
- * If you sell this well you are required to file a Transfer of Operator form, T-1.
- * If the well will remain temporarily abandoned, you must submit a new TA application, CP-111, before 11/29/2023.

You may contact me at the number above if you have questions.

Very truly yours,

Michael Maier"