

KANSAS CORPORATION COMMISSION
OIL & GAS CONSERVATION DIVISION

TEMPORARY ABANDONMENT WELL APPLICATION

OPERATOR: License#
Name:
Address 1:
Address 2:
City: State: Zip:
Contact Person:
Phone:
Contact Person Email:
Field Contact Person:
Field Contact Person Phone:

API No. 15-
Spot Description:
Sec. Twp. S. R.
GPS Location: Lat: Long:
Datum:
County: Elevation:
Lease Name: Well #:
Well Type:
SWD Permit #: ENHR Permit #:
Gas Storage Permit #:
Spud Date: Date Shut-In:

Table with 7 columns: Conductor, Surface, Production, Intermediate, Liner, Tubing. Rows include Size, Setting Depth, Amount of Cement, Top of Cement, Bottom of Cement.

Casing Fluid Level from Surface: How Determined? Date:
Casing Squeeze(s): to w / sacks of cement, to w / sacks of cement. Date:
Do you have a valid Oil & Gas Lease?
Depth and Type: Junk in Hole at Tools in Hole at Casing Leaks:
Type Completion: ALT. I ALT. II Depth of: DV Tool: Port Collar:
Packer Type: Size: Inch Set at: Feet
Total Depth: Plug Back Depth: Plug Back Method:

Geological Data:

Table with 4 columns: Formation Name, Formation Top, Formation Base, Completion Information. Rows 1 and 2.

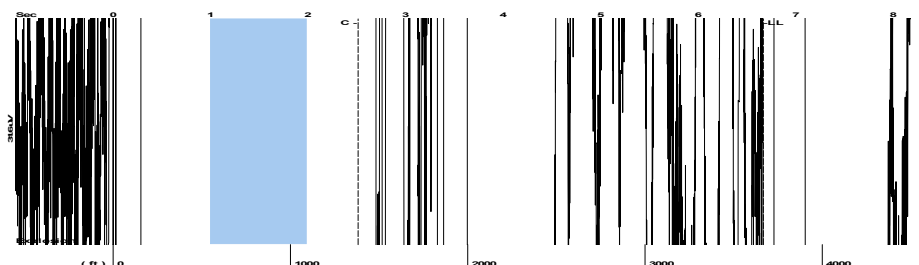
UNDER PENALTY OF PERJURY I HEREBY ATTEST THAT THE INFORMATION CONTAINED HEREIN IS TRUE AND CORRECT TO THE BEST OF MY KNOWLEDGE

Submitted Electronically

Do NOT Write in This Space - KCC USE ONLY
Date Tested: Results: Date Plugged: Date Repaired: Date Put Back in Service:
Review Completed by: Comments:
TA Approved: Yes Denied Date:

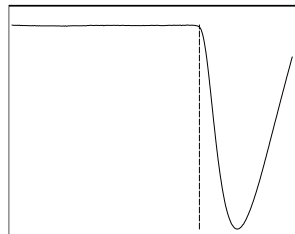
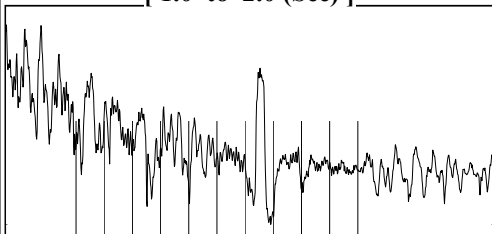
Mail to the Appropriate KCC Conservation Office:

Table with 2 columns: Office Address, Phone. Rows for District Office #1, #2, #3, #4.



Filter Type High Pass Automatic Collar Count Yes Time 6.668 sec  
 Manual Acoustic Veloc 1094.99 ft/s Manual JTS/sec 17.2712 Joints 115.691 Jts  
 Depth 3667.40 ft

[ 1.0 to 2.0 (Sec) ]

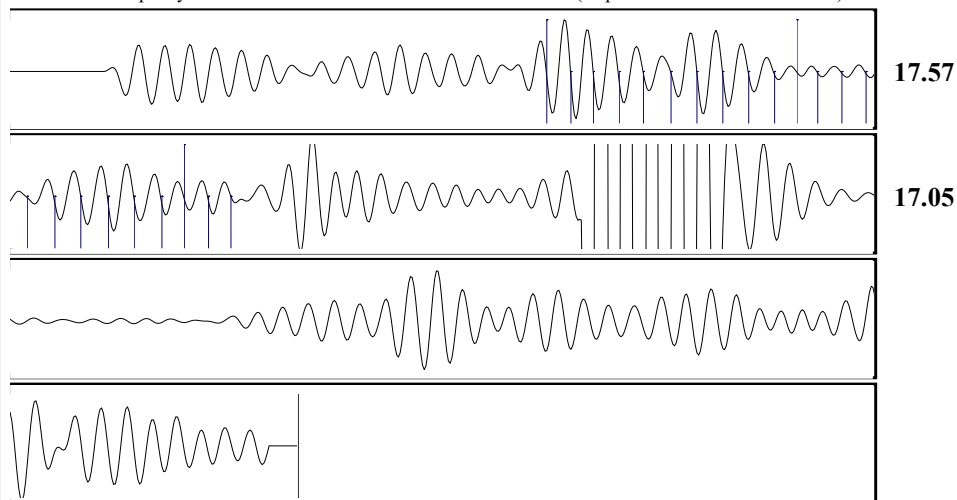


**Analysis Method: Automatic**

NO PRESSURE DATA AVAILABLE

Change in Pressure 0.00 psi NONE Range 0 - ? psi  
 Change in Time 0.00 min

<b>Production</b>	<b>Potential</b>	<b>Casing Pressure</b>		<b>Producing</b>	
Current		0.0 psi (g)		Annular Gas Flow	
Oil - * -	- * - BBL/D	Casing Pressure Buildup		- * - Mscf/D	% Liquid
Water - * -	- * - BBL/D	- * - psi		- * - min	100 %
Gas - * -	- * - Mscf/D	- * - psi (g)			
IPR Method	Vogel	Gas/Liquid Interface Pressure			
PBHP/SBHP	- * -	- * - psi (g)			
Production Efficiency	0.0	Liquid Level Depth			
Oil 40 deg.API		3667.40 ft			
Water 1.05 Sp.Gr.H2O		Pump Intake Depth			
Gas 0.88 Sp.Gr.AIR		- * - ft			
Acoustic Velocity	1100 ft/s	Formation Depth			
		5804.00 ft			
Formation Submergence			<b>Pump Intake</b>		
Total Gaseous Liquid Column HT (TVD)		- * - ft	- * - psi (g)		
Equivalent Gas Free Liquid HT (TVD)		- * - ft	<b>Producing BHP</b>		
			- * - psi (g)		
Acoustic Test			<b>Static BHP</b>		
			- * - psi (g)		



Acoustic Velocity	1100 ft/s	Joints counted	22
Joints Per Second	17.3502 jts/sec	Joints to liquid level	115.691
Depth to liquid level	3667.4 ft	Filter Width	15.2712 19.2712
Automatic Collar Count	Yes	Time to 1st Collar	1.244 2.512

December 08, 2022

Octavio Morales  
American Warrior, Inc.  
PO BOX 399  
GARDEN CITY, KS 67846-0399

Re: Temporary Abandonment  
API 15-081-21867-00-00  
TEEGERSTROM TRUST 13 #1  
SE/4 Sec.13-30S-32W  
Haskell County, Kansas

Dear Octavio Morales:

"Your temporary abandonment (TA) application for the well listed above has been approved. In accordance with K.A.R. 82-3-111 the TA status of this well will expire 12/08/2023.

- \* If you return this well to service or plug it, please notify the District Office.
- \* If you sell this well you are required to file a Transfer of Operator form, T-1.
- \* If the well will remain temporarily abandoned, you must submit a new TA application, CP-111, before 12/08/2023.

You may contact me at the number above if you have questions.

Very truly yours,

Michael Maier"