

KANSAS CORPORATION COMMISSION
OIL & GAS CONSERVATION DIVISION

TEMPORARY ABANDONMENT WELL APPLICATION

OPERATOR: License#
Name:
Address 1:
Address 2:
City: State: Zip:
Contact Person:
Phone:
Contact Person Email:
Field Contact Person:
Field Contact Person Phone:

API No. 15-
Spot Description:
Sec. Twp. S. R.
GPS Location: Lat: Long:
Datum: NAD27 NAD83 WGS84
County: Elevation:
Lease Name: Well #:
Well Type: Oil Gas OG WSW Other:
SWD Permit #: ENHR Permit #:
Gas Storage Permit #:
Spud Date: Date Shut-In:

Table with 7 columns: Conductor, Surface, Production, Intermediate, Liner, Tubing. Rows include Size, Setting Depth, Amount of Cement, Top of Cement, Bottom of Cement.

Casing Fluid Level from Surface: How Determined? Date:
Casing Squeeze(s): to w / sacks of cement, to w / sacks of cement. Date:
Do you have a valid Oil & Gas Lease? Yes No
Depth and Type: Junk in Hole at Tools in Hole at Casing Leaks: Yes No Depth of casing leak(s):
Type Completion: ALT. I ALT. II Depth of: DV Tool: w / sacks of cement Port Collar: w / sack of cement
Packer Type: Size: Inch Set at: Feet
Total Depth: Plug Back Depth: Plug Back Method:

Geological Data:

Table with 4 columns: Formation Name, Formation Top, Formation Base, Completion Information. Rows 1 and 2.

UNDER PENALTY OF PERJURY I HEREBY ATTEST THAT THE INFORMATION CONTAINED HEREIN IS TRUE AND CORRECT TO THE BEST OF MY KNOWLEDGE

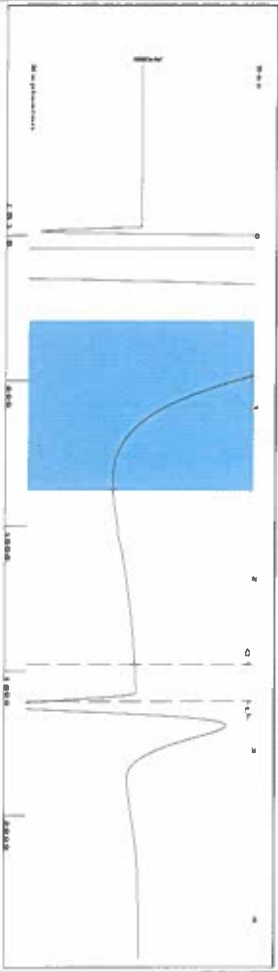
Submitted Electronically

Do NOT Write in This Space - KCC USE ONLY
Date Tested: Results: Date Plugged: Date Repaired: Date Put Back in Service:
Review Completed by: Comments:
TA Approved: Yes Denied Date:

Mail to the Appropriate KCC Conservation Office:

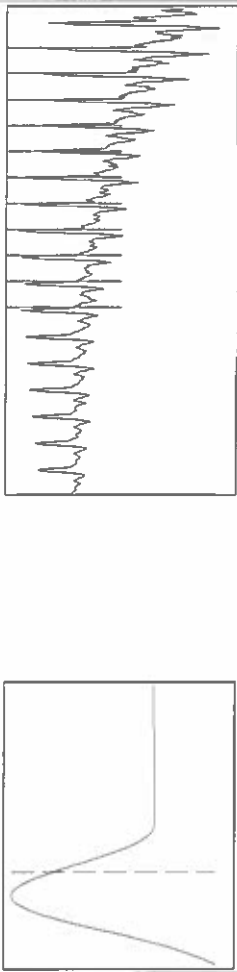
Table with 2 columns: Office Address, Phone. Rows for District Office #1, #2, #3, #4.

Group: SUBLETTE Well: Elizabeth Cox A-7 (acquired on: 12/06/22 10:11:11)



Filter Type High Pass Automatic Collar Count Yes
 Manual Acoustic Velo 1189.49 ft/s Manual JTS/sec 18.7617
 Time 2.723 sec
 Joints 50.6233 J/s
 Depth 1604.76 ft

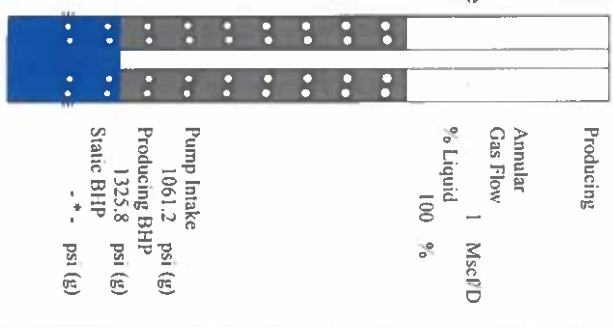
[0.5 to 1.5 (Sec)]



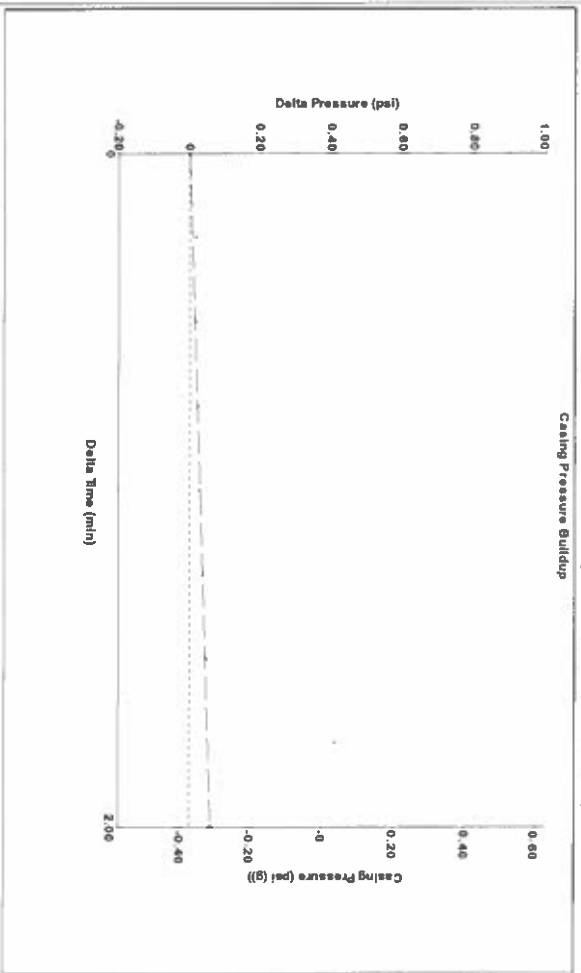
Analysis Method: Automatic

Group: SUBLETTE Well: Elizabeth Cox A-7 (acquired on: 12/06/22 10:11:11)

Production	Potential	Casing Pressure	Producing
Current	BBL/D	-0.4 psi (g)	Annular
Oil	BBL/D	0.059 psi	Gas Flow
Water	Misc/D	2.00 min	% Liquid
Gas		0.3 psi (g)	100 %
IPR Method	Vogel	Gas/Liquid Interface Pressure	
PBHP/SBHP			
Production Efficiency	0.0	Liquid Level Depth	
		1604.76 ft	
Oil	40 deg API	Pump Intake Depth	
Water	1.05 Sp.Gr:H2O	4833.00 ft	
Gas	0.80 Sp.Gr:AIR	Formation Depth	
		5415.00 ft	
Acoustic Velocity	1178.67 ft/s		
Formation Submergence			
Total Gaseous Liquid Column HIT (TVD)	3228 ft		
Equivalent Gas Free Liquid HIT (TVD)	3228 ft		

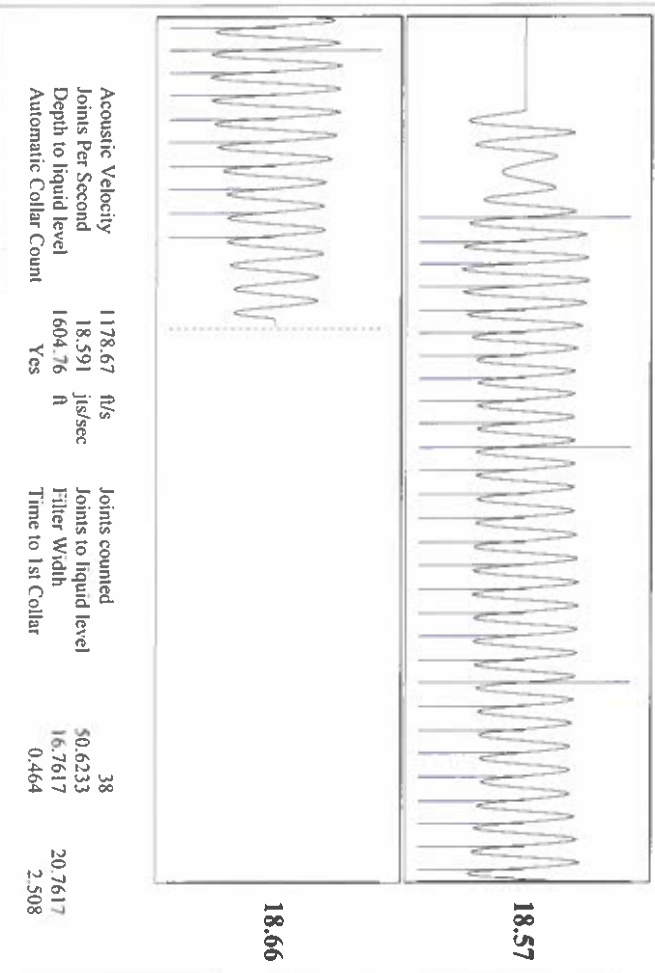


Group: SUBLETTE Well: Elizabeth Cox A-7 (acquired on: 12/06/22 10:11:11)



Change in Pressure 0.06 psi
 Change in Time 2.00 min
 PT16716
 Range 0 - 2 psi

Group: SUBLETTE Well: Elizabeth Cox A-7 (acquired on: 12/06/22 10:11:11)



Acoustic Velocity 1178.67 ft/s
 Joints Per Second 18.591 J/s
 Depth to liquid level 1604.76 ft
 Automatic Collar Count Yes

Joints counted 38
 Joints to liquid level 50.6233
 Filter Width 16.7617
 Time to 1st Collar 2.508

18.66

18.57

Conservation Division
District Office No. 1
210 E. Frontview, Suite A
Dodge City, KS 67801



Phone: 620-682-7933
<http://kcc.ks.gov/>

Dwight D. Keen, Chair
Susan K. Duffy, Commissioner
Andrew J. French, Commissioner

Laura Kelly, Governor

December 08, 2022

Katherine McClurkan
Merit Energy Company, LLC
13727 Noel Road, Suite 1200
Dallas, TX 75240

Re: Temporary Abandonment
API 15-081-21944-00-00
Elizabeth A. Cox 7
SW/4 Sec.08-30S-33W
Haskell County, Kansas

Dear Katherine McClurkan:

"Your temporary abandonment (TA) application for the well listed above has been approved. In accordance with K.A.R. 82-3-111 the TA status of this well will expire 12/08/2023.

- * If you return this well to service or plug it, please notify the District Office.
- * If you sell this well you are required to file a Transfer of Operator form, T-1.
- * If the well will remain temporarily abandoned, you must submit a new TA application, CP-111, before 12/08/2023.

You may contact me at the number above if you have questions.

Very truly yours,

Michael Maier"