

KANSAS CORPORATION COMMISSION
OIL & GAS CONSERVATION DIVISION

TEMPORARY ABANDONMENT WELL APPLICATION

OPERATOR: License#
Name:
Address 1:
Address 2:
City: State: Zip:
Contact Person:
Phone:
Contact Person Email:
Field Contact Person:
Field Contact Person Phone:

API No. 15-
Spot Description:
Sec. Twp. S. R.
feet from N / S Line of Section
feet from E / W Line of Section
GPS Location: Lat: , Long:
Datum: NAD27 NAD83 WGS84
County: Elevation: GL KB
Lease Name: Well #:
Well Type: (check one) Oil Gas OG WSW Other:
SWD Permit #: ENHR Permit #:
Gas Storage Permit #:
Spud Date: Date Shut-In:

Table with 7 columns: Conductor, Surface, Production, Intermediate, Liner, Tubing. Rows include Size, Setting Depth, Amount of Cement, Top of Cement, Bottom of Cement.

Casing Fluid Level from Surface: How Determined? Date:
Casing Squeeze(s): to w / sacks of cement, to w / sacks of cement. Date:
Do you have a valid Oil & Gas Lease? Yes No
Depth and Type: Junk in Hole at Tools in Hole at Casing Leaks: Yes No Depth of casing leak(s):
Type Completion: ALT. I ALT. II Depth of: DV Tool: w / sacks of cement Port Collar: w / sack of cement
Packer Type: Size: Inch Set at: Feet
Total Depth: Plug Back Depth: Plug Back Method:

Geological Data:

Table with 4 columns: Formation Name, Formation Top, Formation Base, Completion Information. Rows 1 and 2.

UNDER PENALTY OF PERJURY I HEREBY ATTEST THAT THE INFORMATION CONTAINED HEREIN IS TRUE AND CORRECT TO THE BEST OF MY KNOWLEDGE

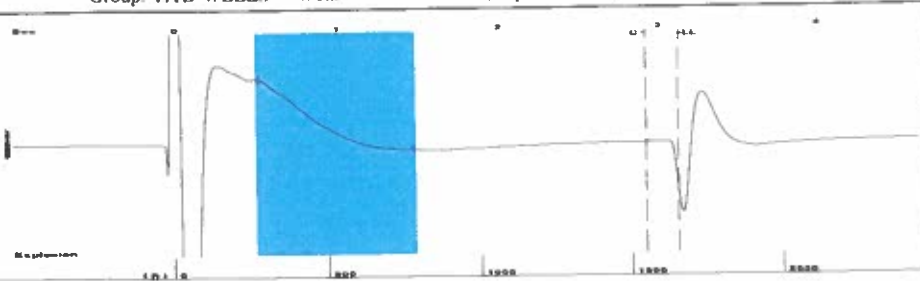
Submitted Electronically

Do NOT Write in This Space - KCC USE ONLY
Date Tested: Results: Date Plugged: Date Repaired: Date Put Back in Service:
Review Completed by: Comments:
TA Approved: Yes Denied Date:

Mail to the Appropriate KCC Conservation Office:

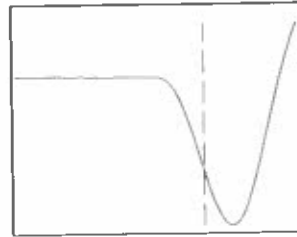
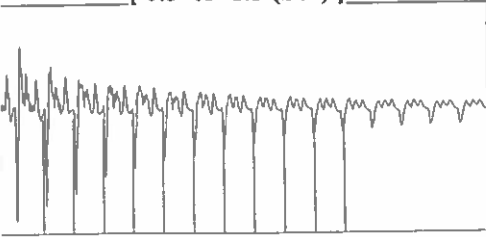
Table with 3 columns: District Office, Address, Phone. Rows for District Office #1, #2, #3, #4.

Group: TA'D WELLS Well: BOALDIN 1-16 (acquired on: 11/10/22 10:19:11)



Filter Type High Pass Automatic Collar Count Yes Time 3.13 sec
 Manual Acoustic Velo 1056.67 ft/s Manual JTS/sec 16.6667 Joints 52.1667 Jts
 Depth 1653.68 ft

[0.5 to 1.5 (Sec)]



Analysis Method: Automatic

Group: TA'D WELLS Well: BOALDIN 1-16 (acquired on: 11/10/22 10:19:11)

Production Current Potential Casing Pressure
 Oil - * - * - BBL/D 0.2 psi (g)
 Water - * - * - BBL/D Casing Pressure Buildup
 Gas - * - * - Mscf/D 0.1 psi
 2.00 min

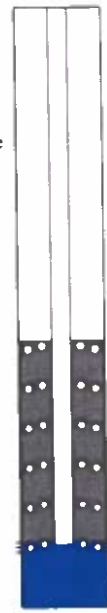
IPR Method Vogel Gas/Liquid Interface Pressure
 PBHP/SBHP - * - * - 1.0 psi (g)
 Production Efficiency 0.0

Oil 40 deg API Liquid Level Depth
 Water 1.05 Sp.Gr.H2O 1653.68 ft
 Gas 0.92 Sp.Gr.AIR

Acoustic Velocity 1056.67 ft/s Pump Intake Depth
 2889.00 ft
 Formation Depth
 2906.00 ft

Formation Submergence
 Total Gaseous Liquid Column HT (TVD) 1235 ft
 Equivalent Gas Free Liquid HT (TVD) 1194 ft

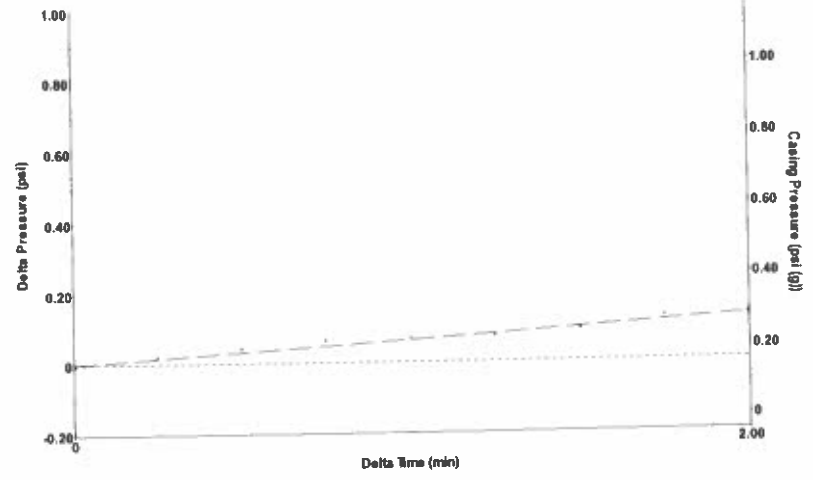
Acoustic Test



Producing
 Annular Gas Flow 1 Mscf/D
 % Liquid 97 %
 Pump Intake 405.5 psi (g)
 Producing BHP 413.1 psi (g)
 Static BHP - * - psi (g)

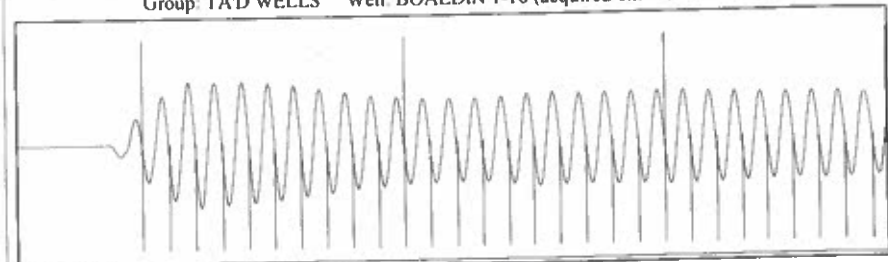
Group: TA'D WELLS Well: BOALDIN 1-16 (acquired on: 11/10/22 10:19:11)

Casing Pressure Buildup

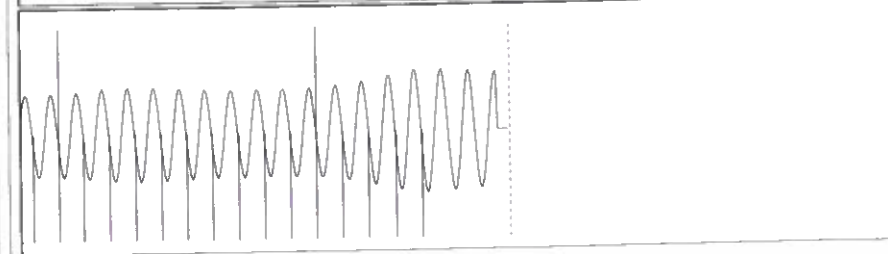


Change in Pressure 0.12 psi PT10411 Range 0 - ? psi
 Change in Time 2.00 min

Group: TA'D WELLS Well: BOALDIN 1-16 (acquired on: 11/10/22 10:19:11)



16.67



16.67

Acoustic Velocity 1056.67 ft/s Joints counted 44
 Joints Per Second 16.6667 jts/sec Joints to liquid level 52.1667
 Depth to liquid level 1653.68 ft Filter Width 14.6667 18.6667
 Automatic Collar Count Yes Time to 1st Collar 0.288 2.928

Conservation Division
District Office No. 1
210 E. Frontview, Suite A
Dodge City, KS 67801



Phone: 620-682-7933
<http://kcc.ks.gov/>

Dwight D. Keen, Chair
Susan K. Duffy, Commissioner
Andrew J. French, Commissioner

Laura Kelly, Governor

December 08, 2022

Katherine McClurkan
Merit Energy Company, LLC
13727 Noel Road, Suite 1200
Dallas, TX 75240

Re: Temporary Abandonment
API 15-129-21202-00-01
Boaldin 1-16
SW/4 Sec.16-35S-43W
Morton County, Kansas

Dear Katherine McClurkan:

"Your temporary abandonment (TA) application for the well listed above has been approved. In accordance with K.A.R. 82-3-111 the TA status of this well will expire 12/08/2023.

- * If you return this well to service or plug it, please notify the District Office.
- * If you sell this well you are required to file a Transfer of Operator form, T-1.
- * If the well will remain temporarily abandoned, you must submit a new TA application, CP-111, before 12/08/2023.

You may contact me at the number above if you have questions.

Very truly yours,

Michael Maier"