

KANSAS CORPORATION COMMISSION
OIL & GAS CONSERVATION DIVISION

TEMPORARY ABANDONMENT WELL APPLICATION

OPERATOR: License#
Name:
Address 1:
Address 2:
City: State: Zip:
Contact Person:
Phone:
Contact Person Email:
Field Contact Person:
Field Contact Person Phone:

API No. 15-
Spot Description:
Sec. Twp. S. R.
feet from N / S Line of Section
feet from E / W Line of Section
GPS Location: Lat: , Long:
Datum: NAD27 NAD83 WGS84
County: Elevation: GL KB
Lease Name: Well #:
Well Type: Oil Gas OG WSW Other:
SWD Permit #: ENHR Permit #:
Gas Storage Permit #:
Spud Date: Date Shut-In:

Table with 7 columns: Conductor, Surface, Production, Intermediate, Liner, Tubing. Rows include Size, Setting Depth, Amount of Cement, Top of Cement, Bottom of Cement.

Casing Fluid Level from Surface: How Determined? Date:
Casing Squeeze(s): to w / sacks of cement, to w / sacks of cement. Date:
Do you have a valid Oil & Gas Lease? Yes No
Depth and Type: Junk in Hole at Tools in Hole at Casing Leaks: Yes No Depth of casing leak(s):
Type Completion: ALT. I ALT. II Depth of: DV Tool: w / sacks of cement Port Collar: w / sack of cement
Packer Type: Size: Inch Set at: Feet
Total Depth: Plug Back Depth: Plug Back Method:

Geological Data:

Table with 4 columns: Formation Name, Formation Top, Formation Base, Completion Information. Rows 1 and 2.

UNDER PENALTY OF PERJURY I HEREBY ATTEST THAT THE INFORMATION CONTAINED HEREIN IS TRUE AND CORRECT TO THE BEST OF MY KNOWLEDGE

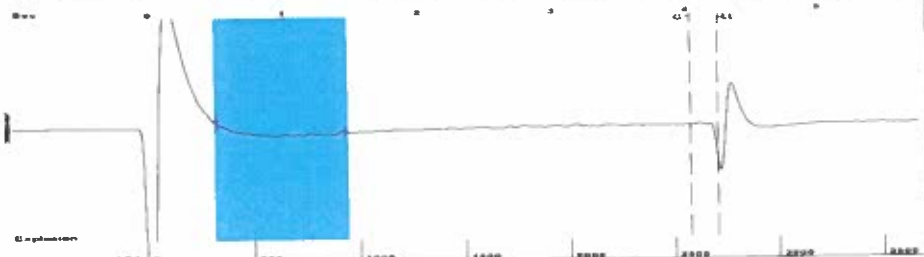
Submitted Electronically

Do NOT Write in This Space - KCC USE ONLY
Date Tested: Results: Date Plugged: Date Repaired: Date Put Back in Service:
Review Completed by: Comments:
TA Approved: Yes Denied Date:

Mail to the Appropriate KCC Conservation Office:

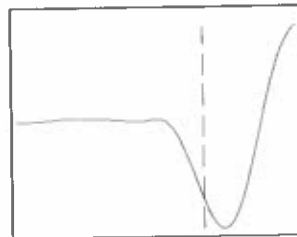
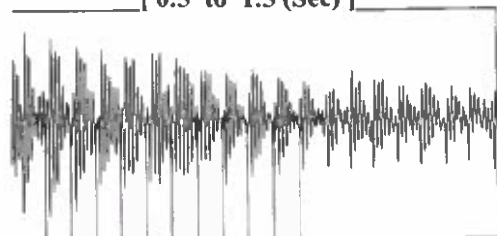
Table with 3 columns: District Office, Address, Phone. Rows for District Office #1, #2, #3, #4.

Group: TA'D WELLS Well: SANTA FE B-1 (acquired on: 11/10/22 12:26:12)



Filter Type High Pass Automatic Collar Count Yes Time 4.247 sec  
 Manual Acoustic Velocity 1252.49 ft/s Manual JTS/sec 19.8807 Joints 85.8683 Jts  
 Depth 2704.85 ft

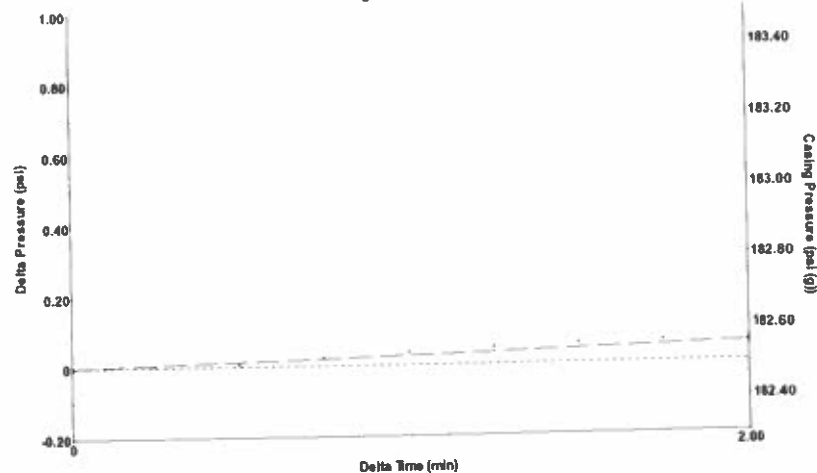
[ 0.5 to 1.5 (Sec) ]



Analysis Method: Automatic

Group: TA'D WELLS Well: SANTA FE B-1 (acquired on: 11/10/22 12:26:12)

Casing Pressure Buildup



Change in Pressure 0.05 psi PT10411 Range 0 - ? psi  
 Change in Time 2.00 min

Group: TA'D WELLS Well: SANTA FE B-1 (acquired on: 11/10/22 12:26:12)

Production Current Potential  
 Oil - \* - BBL/D  
 Water - \* - BBL/D  
 Gas - \* - Mscf/D

IPR Method Vogel  
 PBHP/SBHP - \* -  
 Production Efficiency 0.0

Oil 40 deg API  
 Water 1.05 Sp.Gr.H2O  
 Gas 0.71 Sp.Gr.AIR

Acoustic Velocity 1273.77 ft/s

Casing Pressure 182.5 psi (g)  
 Casing Pressure Buildup 0.1 psi  
 2.00 min  
 Gas/Liquid Interface Pressure 195.9 psi (g)  
 Liquid Level Depth 2704.85 ft  
 Pump Intake Depth 2805.00 ft  
 Formation Depth 2869.00 ft

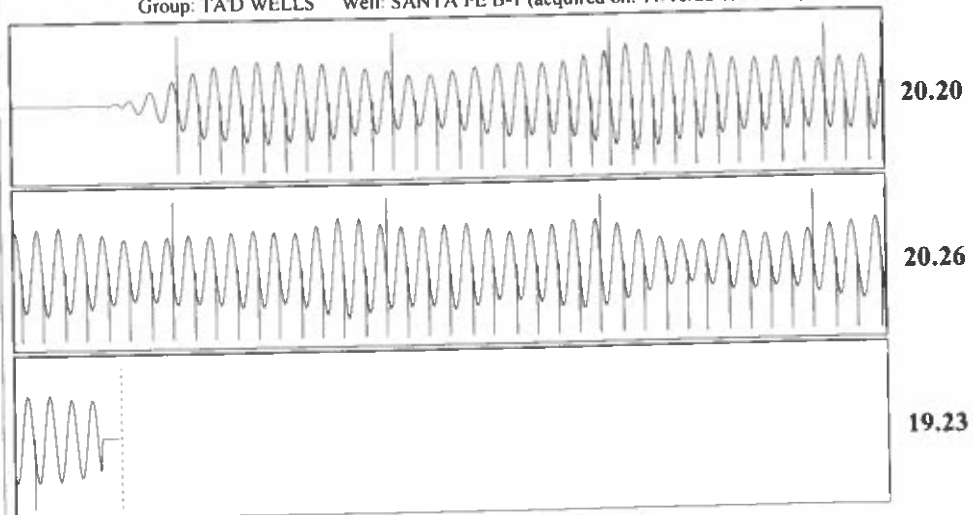


Producing  
 Annular Gas Flow 1 Mscf/D  
 % Liquid 99 %  
 Pump Intake 229.0 psi (g)  
 Producing BHP 257.9 psi (g)  
 Static BHP - \* - psi (g)

Formation Submergence  
 Total Gaseous Liquid Column HT (TVD) 100 ft  
 Equivalent Gas Free Liquid HT (TVD) 99 ft

Acoustic Test

Group: TA'D WELLS Well: SANTA FE B-1 (acquired on: 11/10/22 12:26:12)



Acoustic Velocity 1273.77 ft/s Joints counted 74  
 Joints Per Second 20.2186 jts/sec Joints to liquid level 85.8683  
 Depth to liquid level 2704.85 ft Filter Width 17.8807 21.8807  
 Automatic Collar Count Yes Time to 1st Collar 0.384 4.044

December 08, 2022

Katherine McClurkan  
Merit Energy Company, LLC  
446 South Road M  
Dallas, TX 75240

Re: Temporary Abandonment  
API 15-129-10323-00-01  
Santa Fe B 1  
SE/4 Sec.23-33S-43W  
Morton County, Kansas

Dear Katherine McClurkan:

"Your temporary abandonment (TA) application for the well listed above has been approved. In accordance with K.A.R. 82-3-111 the TA status of this well will expire 12/08/2023.

- \* If you return this well to service or plug it, please notify the District Office.
- \* If you sell this well you are required to file a Transfer of Operator form, T-1.
- \* If the well will remain temporarily abandoned, you must submit a new TA application, CP-111, before 12/08/2023.

You may contact me at the number above if you have questions.

Very truly yours,

Michael Maier"