

KANSAS CORPORATION COMMISSION
OIL & GAS CONSERVATION DIVISION

TEMPORARY ABANDONMENT WELL APPLICATION

OPERATOR: License#
Name:
Address 1:
Address 2:
City: State: Zip:
Contact Person:
Phone:
Contact Person Email:
Field Contact Person:
Field Contact Person Phone:

API No. 15-
Spot Description:
Sec. Twp. S. R.
GPS Location: Lat, Long
Datum: NAD27, NAD83, WGS84
County: Elevation:
Lease Name: Well #:
Well Type: Oil, Gas, OG, WSW, Other
SWD Permit #: ENHR Permit #:
Gas Storage Permit #:
Spud Date: Date Shut-In:

Table with 7 columns: Conductor, Surface, Production, Intermediate, Liner, Tubing. Rows include Size, Setting Depth, Amount of Cement, Top of Cement, Bottom of Cement.

Casing Fluid Level from Surface: How Determined? Date:
Casing Squeeze(s): to w / sacks of cement, to w / sacks of cement. Date:
Do you have a valid Oil & Gas Lease? Yes No
Depth and Type: Junk in Hole at Tools in Hole at Casing Leaks: Yes No Depth of casing leak(s):
Type Completion: ALT. I ALT. II Depth of: DV Tool: w / sacks of cement Port Collar: w / sack of cement
Packer Type: Size: Inch Set at: Feet
Total Depth: Plug Back Depth: Plug Back Method:

Geological Date:

Table with 4 columns: Formation Name, Formation Top, Formation Base, Completion Information. Rows 1 and 2.

UNDER PENALTY OF PERJURY I HEREBY ATTEST THAT THE INFORMATION CONTAINED HEREIN IS TRUE AND CORRECT TO THE BEST OF MY KNOWLEDGE

Submitted Electronically

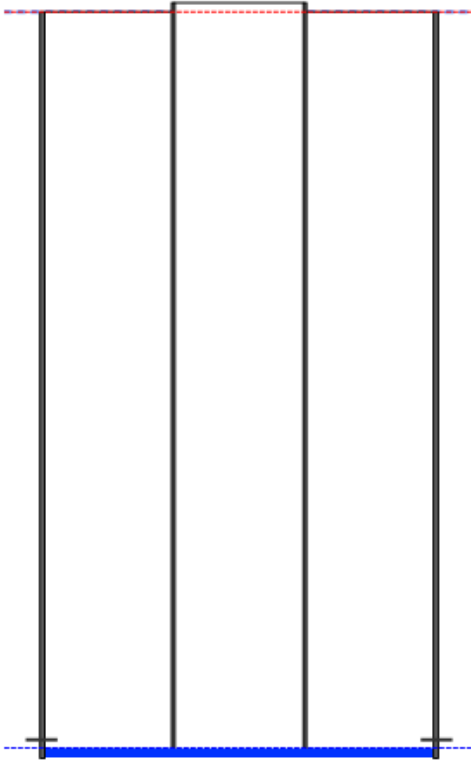
Do NOT Write in This Space - KCC USE ONLY
Date Tested: Results: Date Plugged: Date Repaired: Date Put Back in Service:
Review Completed by: Comments:
TA Approved: Yes Denied Date:

Mail to the Appropriate KCC Conservation Office:

Table with 3 columns: District Office #, Address, Phone. Rows 1-4.



**Producing Shot
Manual Input**



Manually Entered Production

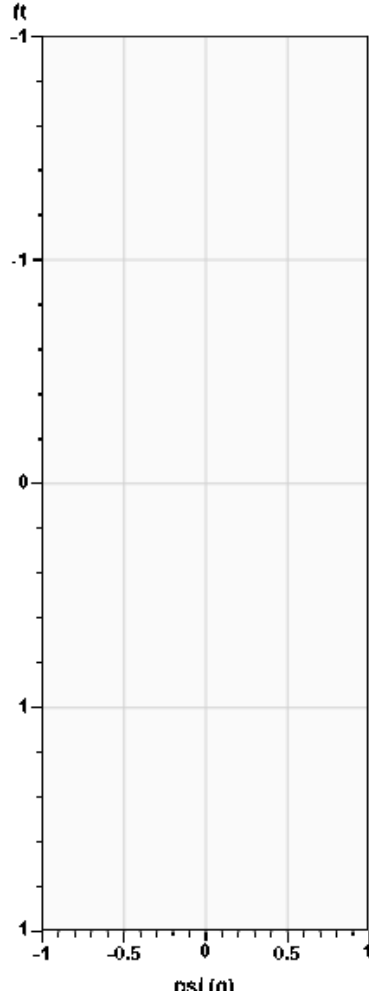
Liquid Level 3750 ft
Percent Liquid 100.00%

Static Bottomhole Pressure

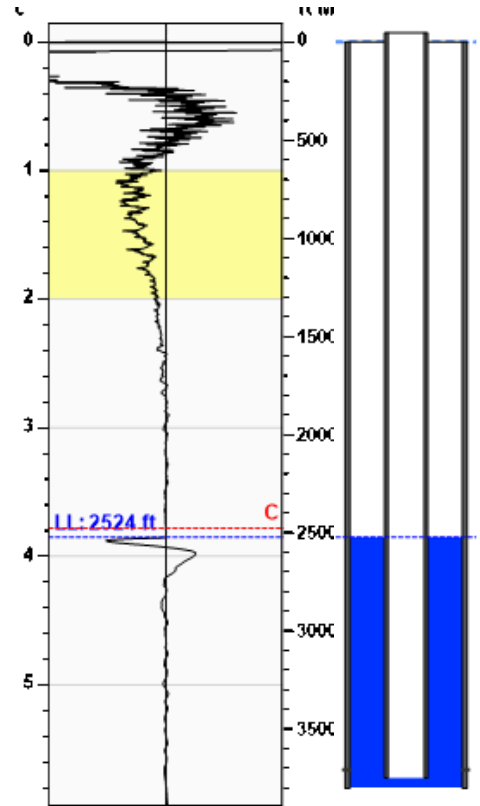
**** psi (g) @ **. ft TVD**

Static Liquid Level 2524 ft MD
Oil Column Height *. ft MD
Water Column Height *. ft MD

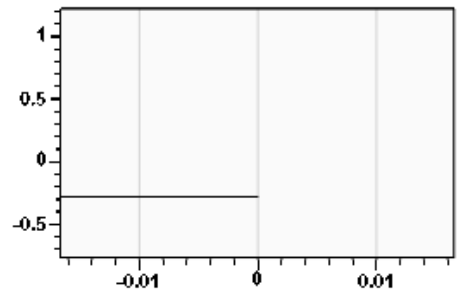
Pressure Profile (TVD)



**Static Shot
12/08/2022 03:48:28PM**



Casing Pressure Buildup



Casing Pressure -0.3 psi (g)
Buildup 0.0 psi (g)
Buildup Time 0 sec
Gas Gravity

Well Test

Oil *. BBL/D
Water *. BBL/D

**Comments and
Recommendations**

Chapin #6-36 - Acoustic Test

Casing Pressure

Pressure -0.3 psi (g)

Annular Gas Flow

Gas Flow *. Mscf/D

December 13, 2022

Logan Behr
HG Oil Holdings, LLC
PO Box 446
Hoisington, KS 67544-0446

Re: Temporary Abandonment
API 15-007-22111-00-00
CHAPIN 6-36
SE/4 Sec.36-31S-11W
Barber County, Kansas

Dear Logan Behr:

"Your temporary abandonment (TA) application for the well listed above has been approved. In accordance with K.A.R. 82-3-111 the TA status of this well will expire 12/13/2023.

- * If you return this well to service or plug it, please notify the District Office.
- * If you sell this well you are required to file a Transfer of Operator form, T-1.
- * If the well will remain temporarily abandoned, you must submit a new TA application, CP-111, before 12/13/2023.

You may contact me at the number above if you have questions.

Very truly yours,

Michael Maier"