

KANSAS CORPORATION COMMISSION
OIL & GAS CONSERVATION DIVISION

TEMPORARY ABANDONMENT WELL APPLICATION

OPERATOR: License#
Name:
Address 1:
Address 2:
City: State: Zip:
Contact Person:
Phone:
Contact Person Email:
Field Contact Person:
Field Contact Person Phone:

API No. 15-
Spot Description:
Sec. Twp. S. R.
GPS Location: Lat: Long:
Datum: NAD27 NAD83 WGS84
County: Elevation:
Lease Name: Well #:
Well Type: Oil Gas OG WSW Other:
SWD Permit #: ENHR Permit #:
Gas Storage Permit #:
Spud Date: Date Shut-In:

Table with 7 columns: Conductor, Surface, Production, Intermediate, Liner, Tubing. Rows include Size, Setting Depth, Amount of Cement, Top of Cement, Bottom of Cement.

Casing Fluid Level from Surface: How Determined? Date:
Casing Squeeze(s): to w / sacks of cement, to w / sacks of cement. Date:
Do you have a valid Oil & Gas Lease? Yes No
Depth and Type: Junk in Hole at Tools in Hole at Casing Leaks: Yes No Depth of casing leak(s):
Type Completion: ALT. I ALT. II Depth of: DV Tool: w / sacks of cement Port Collar: w / sack of cement
Packer Type: Size: Inch Set at: Feet
Total Depth: Plug Back Depth: Plug Back Method:

Geological Data:

Table with 4 columns: Formation Name, Formation Top, Formation Base, Completion Information. Rows 1 and 2.

UNDER PENALTY OF PERJURY I HEREBY ATTEST THAT THE INFORMATION CONTAINED HEREIN IS TRUE AND CORRECT TO THE BEST OF MY KNOWLEDGE

Submitted Electronically

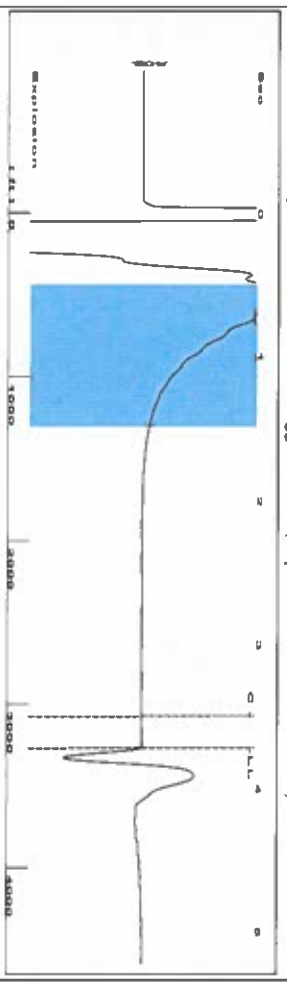
Do NOT Write in This Space - KCC USE ONLY
Date Tested: Results: Date Plugged: Date Repaired: Date Put Back in Service:
Review Completed by: Comments:
TA Approved: Yes Denied Date:

Mail to the Appropriate KCC Conservation Office:

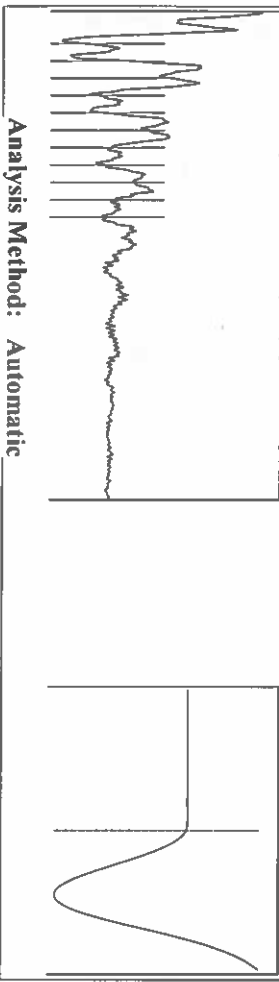
Table with 2 columns: Office Address, Phone. Rows for District Office #1, #2, #3, #4.

Shot @ 300# JK

Group: Liberal Wells Well: Wiggins 12-12 (acquired on 12/10/22 12:23:47)

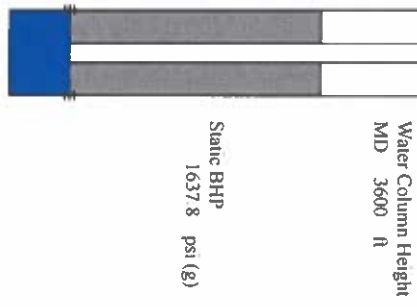


Filter Type High Pass Automatic Collar Count Yes
 Manual Acoustic Veloc 1775.91 ft/s Manual JTS/sec 28.0112
 Time 3.721 sec
 Joints 102.98 Jts
 Depth 3264.46 ft

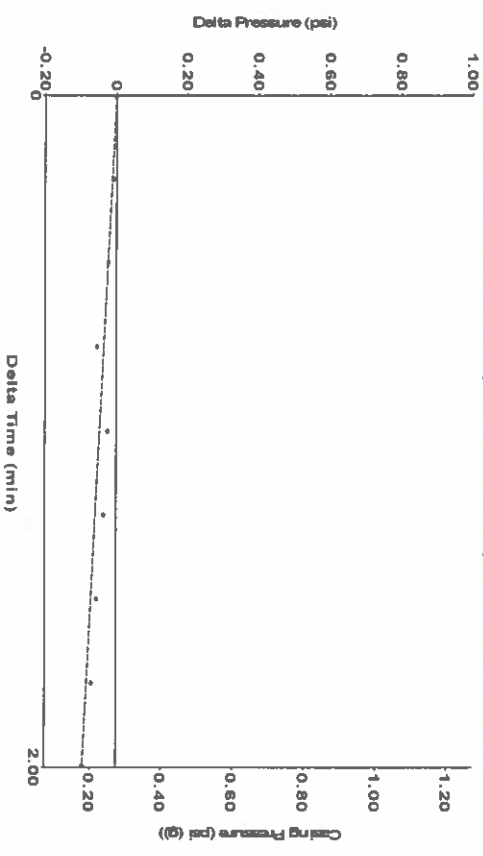


Group: Liberal Wells Well: Wiggins 12-12 (acquired on: 12/10/22 12:23:47)

Production Current	Potential	Casing Pressure	Static
Oil -*- BBL/D	-*- BBL/D	0.3 psi (g)	
Water -*- BBL/D	-*- BBL/D	Casing Pressure Buildup	Oil Column Height
Gas -*- Mscf/D	-*- Mscf/D	-0.094 psi	MD 0 ft
IPR Method	Vogel	2.00 min	Gas/Liquid Interface Pressure
PBHP/SBHP	-*-	Gas/Liquid Interface Pressure	1.2 psi (g)
Production Efficiency	0.0	Liquid Level Depth	3264.46 ft
Oil 40 deg API		Tubing Intake Depth	6864.00 ft
Water 1.05 Sp.Gr:H2O		Formation Depth	6864.00 ft
Gas 0.55 Sp.Gr:AIR		Acoustic Velocity	1754.61 ft/s

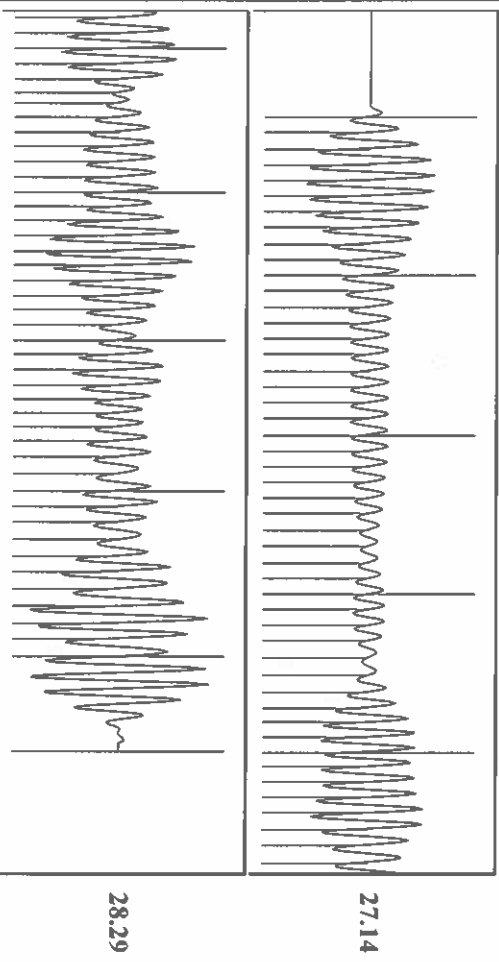


Group: Liberal Wells Well: Wiggins 12-12 (acquired on 12/10/22 12:23:47)



Change in Pressure -0.09 psi PT 11249
 Change in Time 2.00 min Range 0 - ? psi

Group: Liberal Wells Well: Wiggins 12-12 (acquired on 12/10/22 12:23:47)



Acoustic Velocity	1754.61 ft/s	Joints counted	90
Joints Per Second	27.6753 jts/sec	Joints to Liquid Level	102.98
Depth to Liquid Level	3264.46 ft	Filter Width	26.0112
Automatic Collar Count	Yes	Time to 1st Collar	0.248

December 13, 2022

Katherine McClurkan
Merit Energy Company, LLC
13727 Noel Road, Suite 1200
Dallas, TX 75240

Re: Temporary Abandonment
API 15-189-22802-00-00
Wiggains 12 12
SE/4 Sec.12-35S-36W
Stevens County, Kansas

Dear Katherine McClurkan:

"Your temporary abandonment (TA) application for the well listed above has been approved. In accordance with K.A.R. 82-3-111 the TA status of this well will expire 08/13/2023.

- * If you return this well to service or plug it, please notify the District Office.
- * If you sell this well you are required to file a Transfer of Operator form, T-1.
- * If the well will remain temporarily abandoned, you must submit a new TA application, CP-111, before 08/13/2023.

You may contact me at the number above if you have questions.

Very truly yours,

Michael Maier"