

KANSAS CORPORATION COMMISSION
OIL & GAS CONSERVATION DIVISION

TEMPORARY ABANDONMENT WELL APPLICATION

OPERATOR: License#
Name:
Address 1:
Address 2:
City: State: Zip:
Contact Person:
Phone:
Contact Person Email:
Field Contact Person:
Field Contact Person Phone:

API No. 15-
Spot Description:
Sec. Twp. S. R.
GPS Location: Lat, Long
Datum: NAD27, NAD83, WGS84
County: Elevation:
Lease Name: Well #:
Well Type: Oil, Gas, OG, WSW, Other
SWD Permit #: ENHR Permit #:
Gas Storage Permit #:
Spud Date: Date Shut-In:

Table with 7 columns: Conductor, Surface, Production, Intermediate, Liner, Tubing. Rows include Size, Setting Depth, Amount of Cement, Top of Cement, Bottom of Cement.

Casing Fluid Level from Surface: How Determined? Date:
Casing Squeeze(s): to w / sacks of cement, to w / sacks of cement. Date:
Do you have a valid Oil & Gas Lease? Yes No
Depth and Type: Junk in Hole at Tools in Hole at Casing Leaks: Yes No Depth of casing leak(s):
Type Completion: ALT. I ALT. II Depth of: DV Tool: w / sacks of cement Port Collar: w / sack of cement
Packer Type: Size: Inch Set at: Feet
Total Depth: Plug Back Depth: Plug Back Method:

Geological Date:

Table with 4 columns: Formation Name, Formation Top, Formation Base, Completion Information. Rows 1 and 2.

UNDER PENALTY OF PERJURY I HEREBY ATTEST THAT THE INFORMATION CONTAINED HEREIN IS TRUE AND CORRECT TO THE BEST OF MY KNOWLEDGE

Submitted Electronically

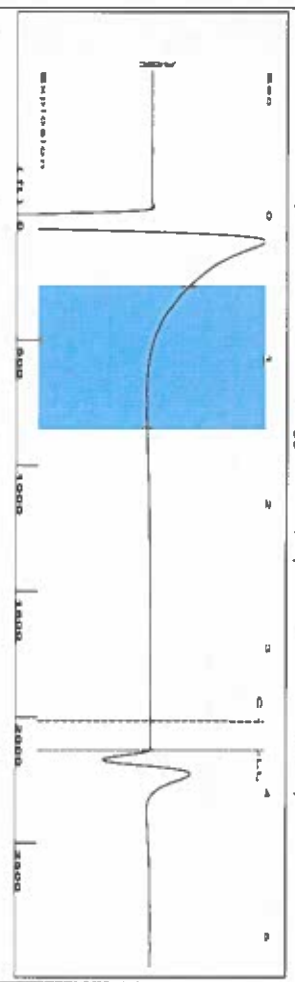
Form with fields: Do NOT Write in This Space - KCC USE ONLY, Date Tested, Results, Date Plugged, Date Repaired, Date Put Back in Service, Review Completed by, Comments, TA Approved: Yes Denied, Date.

Mail to the Appropriate KCC Conservation Office:

Table with 3 columns: District Office #, Address, Phone. Rows 1-4.

Shot @ 30045K

Group: Liberal Wells Well: Wiggins 12-8 (acquired on: 12/10/22 12:06:46)



Filter Type High Pass Automatic Collar Count Yes
 Manual Acoustic Velocity 167.99 f/s Manual JTS/sec 18.4162
 Time 3.709 sec
 Joints 67.2085 Jts
 Depth 2130.51 ft



Analysis Method: Automatic

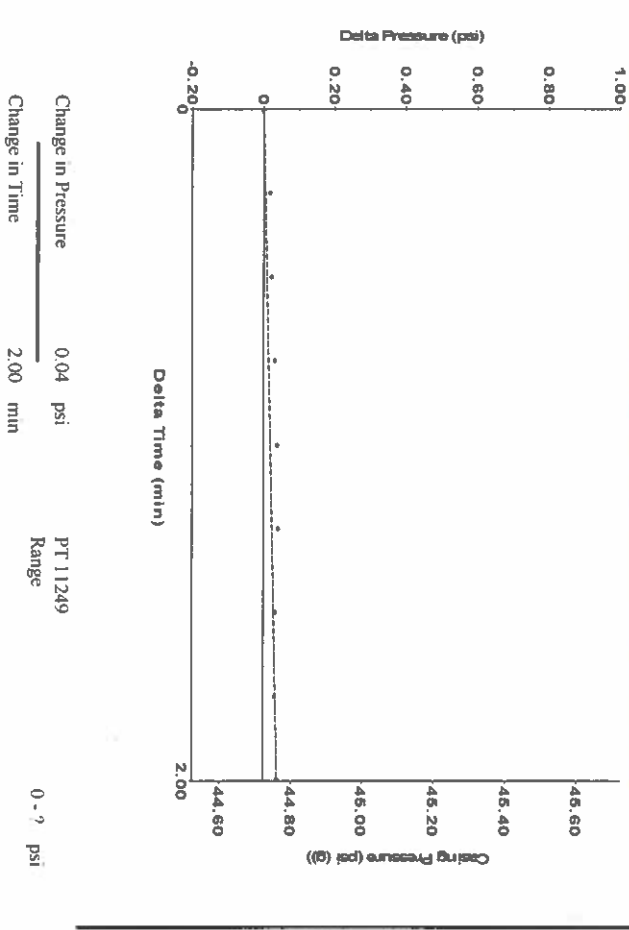
Group: Liberal Wells Well: Wiggins 12-8 (acquired on: 12/10/22 12:06:46)

Production	Potential	Casing Pressure	Static
Oil -*- BBL/D	44.7 psi (g)	Oil Column Height	MD 0 ft
Water -*- BBL/D	0.038 psi	Gas/Liquid Interface Pressure	48.5 psi (g)
Gas -*- Mscf/D	2.00 min		
IPR Method PBHP/SBHP	Vogel -*-		
Production Efficiency	0.0		

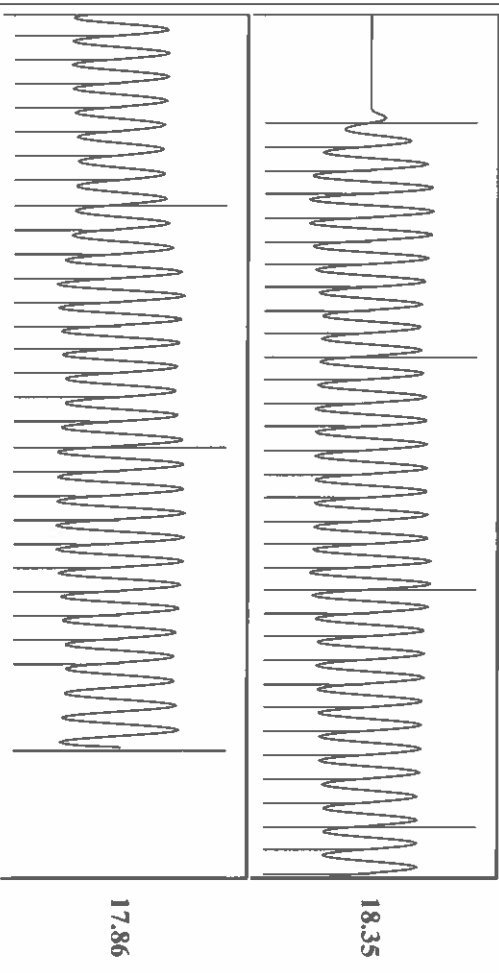
Acoustic Test	Acoustic Velocity	Liquid Level Depth	Water Column Height
Oil 40 deg API	1148.83 f/s	2130.51 ft	MD 4732 ft
Water 1.05 Sp.Gr H2O			
Gas 0.82 Sp.Gr AIR			
		Pump Intake Depth 6544.00 ft	Static BHP 2200.1 psi (g)
		Formation Depth 6863.00 ft	



Group: Liberal Wells Well: Wiggins 12-8 (acquired on: 12/10/22 12:06:46)



Group: Liberal Wells Well: Wiggins 12-8 (acquired on: 12/10/22 12:06:46)



Acoustic Velocity	1148.83 f/s	Joints counted	59
Joints Per Second	18.1204 Jts/Sec	Joints to liquid level	67.2085
Depth to liquid level	2130.51 ft	Filter Width	16.4162
Automatic Collar Count	Yes	Time to 1st Collar	0.252

Conservation Division
District Office No. 1
210 E. Frontview, Suite A
Dodge City, KS 67801



Phone: 620-682-7933
<http://kcc.ks.gov/>

Dwight D. Keen, Chair
Susan K. Duffy, Commissioner
Andrew J. French, Commissioner

Laura Kelly, Governor

December 13, 2022

Katherine McClurkan
Merit Energy Company, LLC
13727 Noel Road, Suite 1200
DALLAS, TX 75240-7362

Re: Temporary Abandonment
API 15-189-22775-00-00
Wiggains 12-8
NE/4 Sec.12-35S-36W
Stevens County, Kansas

Dear Katherine McClurkan:

"Your temporary abandonment (TA) application for the well listed above has been approved. In accordance with K.A.R. 82-3-111 the TA status of this well will expire 12/13/2023.

- * If you return this well to service or plug it, please notify the District Office.
- * If you sell this well you are required to file a Transfer of Operator form, T-1.
- * If the well will remain temporarily abandoned, you must submit a new TA application, CP-111, before 12/13/2023.

You may contact me at the number above if you have questions.

Very truly yours,

Michael Maier"