

KANSAS CORPORATION COMMISSION
OIL & GAS CONSERVATION DIVISION

TEMPORARY ABANDONMENT WELL APPLICATION

OPERATOR: License#
Name:
Address 1:
Address 2:
City: State: Zip:
Contact Person:
Phone:
Contact Person Email:
Field Contact Person:
Field Contact Person Phone:

API No. 15-
Spot Description:
Sec. Twp. S. R.
GPS Location: Lat: Long:
Datum: NAD27 NAD83 WGS84
County: Elevation:
Lease Name: Well #:
Well Type: Oil Gas OG WSW Other:
SWD Permit #: ENHR Permit #:
Gas Storage Permit #:
Spud Date: Date Shut-In:

Table with 7 columns: Conductor, Surface, Production, Intermediate, Liner, Tubing. Rows include Size, Setting Depth, Amount of Cement, Top of Cement, Bottom of Cement.

Casing Fluid Level from Surface: How Determined? Date:
Casing Squeeze(s): to w / sacks of cement, to w / sacks of cement. Date:
Do you have a valid Oil & Gas Lease? Yes No
Depth and Type: Junk in Hole at Tools in Hole at Casing Leaks: Yes No Depth of casing leak(s):
Type Completion: ALT. I ALT. II Depth of: DV Tool: w / sacks of cement Port Collar: w / sack of cement
Packer Type: Size: Inch Set at: Feet
Total Depth: Plug Back Depth: Plug Back Method:

Geological Data:

Table with 4 columns: Formation Name, Formation Top, Formation Base, Completion Information. Rows 1 and 2.

UNDER PENALTY OF PERJURY I HEREBY ATTEST THAT THE INFORMATION CONTAINED HEREIN IS TRUE AND CORRECT TO THE BEST OF MY KNOWLEDGE

Submitted Electronically

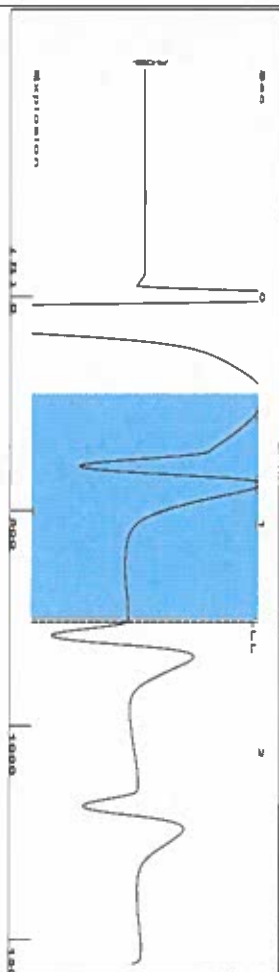
Do NOT Write in This Space - KCC USE ONLY
Date Tested: Results: Date Plugged: Date Repaired: Date Put Back in Service:
Review Completed by: Comments:
TA Approved: Yes Denied Date:

Mail to the Appropriate KCC Conservation Office:

Table with 2 columns: Office Address, Phone. Rows for District Office #1, #2, #3, #4.



Group: Liberal Wells Well: Hitch 1-10 (acquired on: 12/10/22 10:34:00)



Filter Type High Pass
 Manual Acoustic Velocity 1060.2 ft/s
 Automatic Collar Count Yes
 Manual JTS/sec 16.7224
 Time 1.431 sec
 Joints 23.9298 Jts
 Depth 758.57 ft



Analysis Method: Automatic

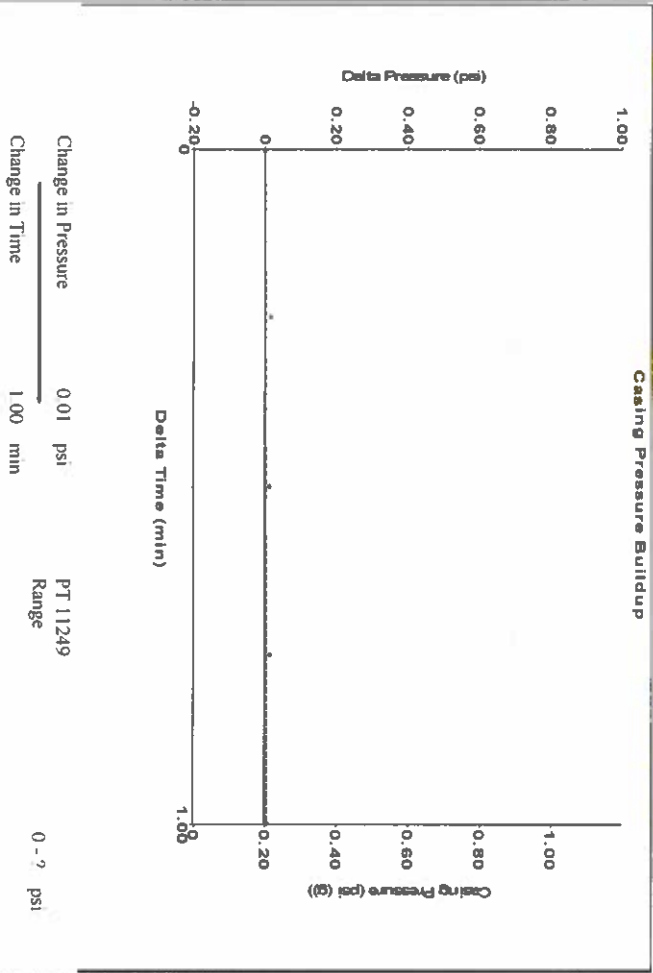
Group: Liberal Wells Well: Hitch 1-10 (acquired on: 12/10/22 10:34:00)

Production	Potential	Casing Pressure	Static
Oil -*- Water -*- Gas -*-	-*- BBL/D -*- BBL/D -*- Mscf/D	0.2 psi (g) Casing Pressure Buildup 0.007 psi 1.00 min Gas/Liquid Interface Pressure 0.6 psi (g)	Oil Column Height MD 0 ft
IPR Method PBHP/SBHP Production Efficiency	Vogel -*- 0.0	Liquid Level Depth 758.57 ft	Water Column Height MD 1937 ft
Oil 40 deg API Water 1.05 Sp.Gr.H2O Gas 0.91 Sp.Gr.AIR		Pump Intake Depth 2687.00 ft Formation Depth 2696.00 ft	Static BHP 881.4 psi (g)
Acoustic Velocity	1060.2 ft/s		

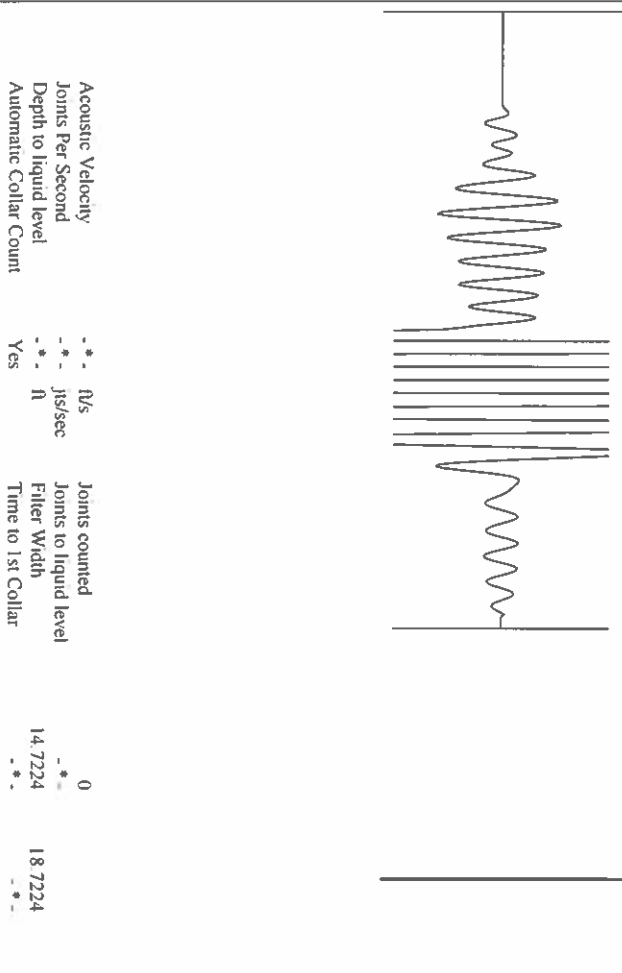


Group: Liberal Wells Well: Hitch 1-10 (acquired on: 12/10/22 10:34:00)

Shot @ 3004 JTK



Group: Liberal Wells Well: Hitch 1-10 (acquired on: 12/10/22 10:34:00)



Acoustic Velocity -*- ft/s
 Joints Per Second -*- Jts/sec
 Depth to liquid level -*- ft
 Automatic Collar Count Yes

Joints counted
 Joints to liquid level
 Filter Width
 Time to 1st Collar

0
 14.7224
 18.7224

December 13, 2022

Katherine McClurkan
Merit Energy Company, LLC
13727 Noel Road, Suite 1200
Dallas, TX 75240-7362

Re: Temporary Abandonment
API 15-175-00174-00-00
Hitch 1-10
NE/4 Sec.10-33S-34W
Seward County, Kansas

Dear Katherine McClurkan:

"Your temporary abandonment (TA) application for the well listed above has been approved. In accordance with K.A.R. 82-3-111 the TA status of this well will expire 12/13/2023.

- * If you return this well to service or plug it, please notify the District Office.
- * If you sell this well you are required to file a Transfer of Operator form, T-1.
- * If the well will remain temporarily abandoned, you must submit a new TA application, CP-111, before 12/13/2023.

You may contact me at the number above if you have questions.

Very truly yours,

Michael Maier"