

KANSAS CORPORATION COMMISSION
OIL & GAS CONSERVATION DIVISION

TEMPORARY ABANDONMENT WELL APPLICATION

OPERATOR: License#
Name:
Address 1:
Address 2:
City: State: Zip:
Contact Person:
Phone:
Contact Person Email:
Field Contact Person:
Field Contact Person Phone:

API No. 15-
Spot Description:
Sec. Twp. S. R.
GPS Location: Lat: Long:
Datum: NAD27 NAD83 WGS84
County: Elevation:
Lease Name: Well #:
Well Type: Oil Gas OG WSW Other:
SWD Permit #: ENHR Permit #:
Gas Storage Permit #:
Spud Date: Date Shut-In:

Table with 7 columns: Conductor, Surface, Production, Intermediate, Liner, Tubing. Rows include Size, Setting Depth, Amount of Cement, Top of Cement, Bottom of Cement.

Casing Fluid Level from Surface: How Determined? Date:
Casing Squeeze(s): to w / sacks of cement, to w / sacks of cement. Date:
Do you have a valid Oil & Gas Lease? Yes No
Depth and Type: Junk in Hole at Tools in Hole at Casing Leaks: Yes No Depth of casing leak(s):
Type Completion: ALT. I ALT. II Depth of: DV Tool: w / sacks of cement Port Collar: w / sack of cement
Packer Type: Size: Inch Set at: Feet
Total Depth: Plug Back Depth: Plug Back Method:

Geological Data:

Table with 4 columns: Formation Name, Formation Top, Formation Base, Completion Information. Rows 1 and 2.

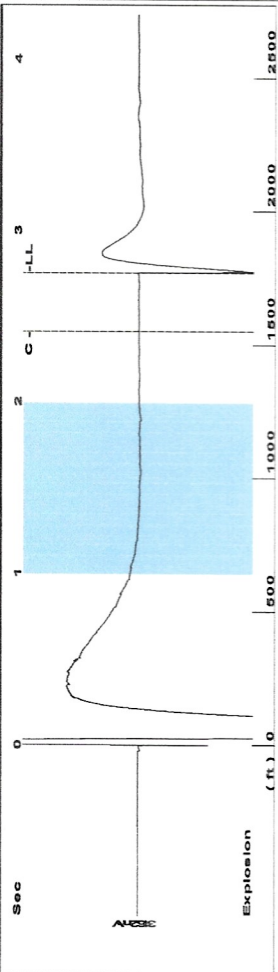
UNDER PENALTY OF PERJURY I HEREBY ATTEST THAT THE INFORMATION CONTAINED HEREIN IS TRUE AND CORRECT TO THE BEST OF MY KNOWLEDGE

Submitted Electronically

Do NOT Write in This Space - KCC USE ONLY
Date Tested: Results: Date Plugged: Date Repaired: Date Put Back in Service:
Review Completed by: Comments:
TA Approved: Yes Denied Date:

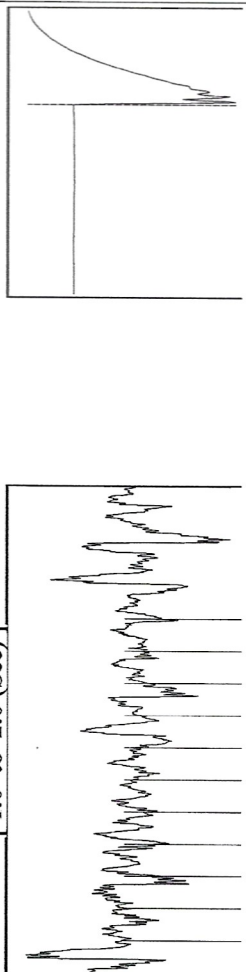
Mail to the Appropriate KCC Conservation Office:

Table with 3 columns: District Office #, Address, Phone. Rows 1-4.



Explosion (ft)

Filter Type High Pass Automatic Collar Count Yes
 Manual Acoustic Veloc 1217.66 ft/s Manual JTS/sec 15.2207
 Time 2.754 sec
 Joints 44.2332 Jts
 Depth 1769.33 ft



Delta Pressure (psi)

Delta Time (min)

Change in Pressure 0.02 psi PT15504 Range
 Change in Time 1.25 min

Analysis Method: Automatic

Production Current	Potential	Casing Pressure	0.3 psi (g)
Oil 0	- - BBL/D	Casing Pressure Buildup	0.023 psi
Water 0	- - BBL/D	Gas/Liquid Interface Pressure	1.25 min
Gas 0.0	- - Mscf/D	Gas/Liquid Interface Pressure	0.9 psi (g)
IPR Method	Vogel	Liquid Level Depth	1769.33 ft
PBHP/SBHP	- -	Pump Intake Depth	- - ft
Production Efficiency	0.0	Formation Depth	4324.00 ft
Oil 39 deg API		Acoustic Velocity	1284.92 ft/s
Water 1.05 Sp.Gr:H2O		Formation Submergence	2555 ft
Gas 0.70 Sp.Gr:AIR		Total Gaseous Liquid Column HT (TVD)	2555 ft
		Equivalent Gas Free Liquid HT (TVD)	



Producing

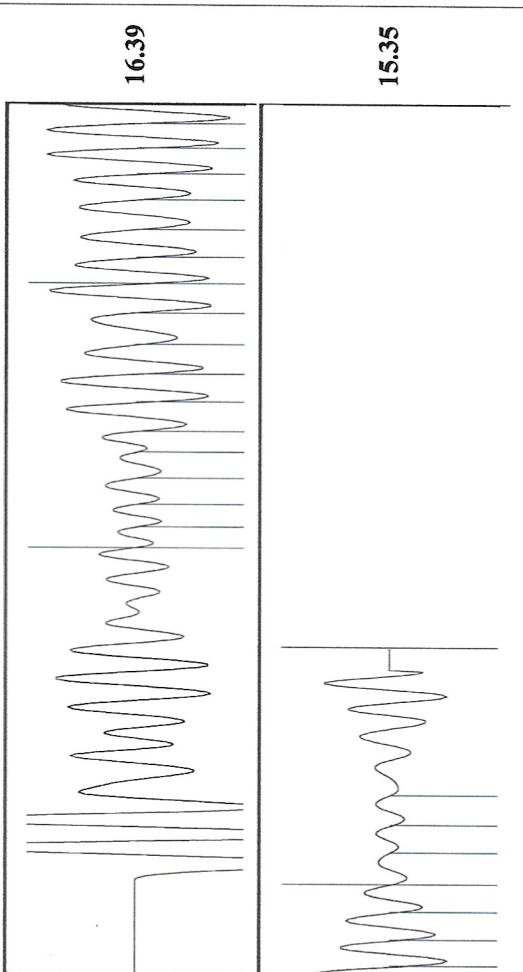
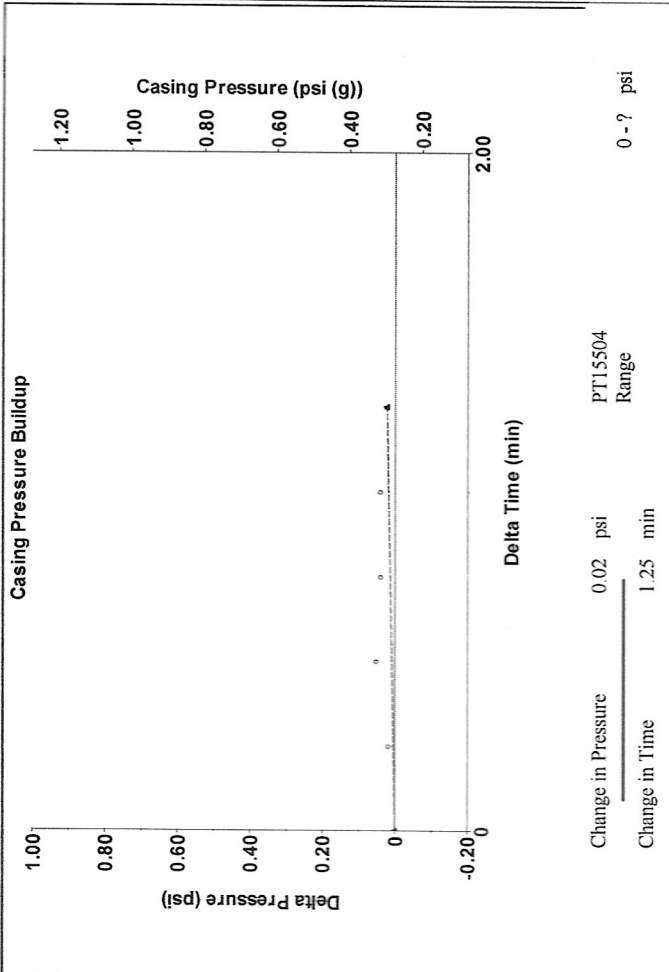
Annular Gas Flow - * - Mscf/D 100 %

% Liquid

Pump Intake - * - psi (g)

Producing BHP 1162.4 psi (g)

Static BHP - * - psi (g)



Acoustic Velocity 1284.92 ft/s Joints counted 23

Joints Per Second 16.0615 jts/sec Joints to liquid level 44.2332

Depth to liquid level 1769.33 ft Filter Width 13.2207

Automatic Collar Count Yes Time to 1st Collar 0.98

December 13, 2022

Chris Peters
Hartman Oil Co., Inc.
10500 E BERKELEY SQ PKWY STE 100
WICHITA, KS 67206

Re: Temporary Abandonment
API 15-055-20542-00-00
LOOMIS VEDA 4
NW/4 Sec.30-21S-33W
Finney County, Kansas

Dear Chris Peters:

"Your temporary abandonment (TA) application for the well listed above has been approved. In accordance with K.A.R. 82-3-111 the TA status of this well will expire 12/13/2023.

- * If you return this well to service or plug it, please notify the District Office.
- * If you sell this well you are required to file a Transfer of Operator form, T-1.
- * If the well will remain temporarily abandoned, you must submit a new TA application, CP-111, before 12/13/2023.

You may contact me at the number above if you have questions.

Very truly yours,

Michael Maier"