

KANSAS CORPORATION COMMISSION
OIL & GAS CONSERVATION DIVISION

TEMPORARY ABANDONMENT WELL APPLICATION

OPERATOR: License#
Name:
Address 1:
Address 2:
City: State: Zip:
Contact Person:
Phone:
Contact Person Email:
Field Contact Person:
Field Contact Person Phone:

API No. 15-
Spot Description:
Sec. Twp. S. R.
feet from N / S Line of Section
feet from E / W Line of Section
GPS Location: Lat: , Long:
Datum: NAD27 NAD83 WGS84
County: Elevation: GL KB
Lease Name: Well #:
Well Type: Oil Gas OG WSW Other:
SWD Permit #: ENHR Permit #:
Gas Storage Permit #:
Spud Date: Date Shut-In:

Table with 7 columns: Conductor, Surface, Production, Intermediate, Liner, Tubing. Rows include Size, Setting Depth, Amount of Cement, Top of Cement, Bottom of Cement.

Casing Fluid Level from Surface: How Determined? Date:
Casing Squeeze(s): to w / sacks of cement, to w / sacks of cement. Date:
Do you have a valid Oil & Gas Lease? Yes No
Depth and Type: Junk in Hole at Tools in Hole at Casing Leaks: Yes No Depth of casing leak(s):
Type Completion: ALT. I ALT. II Depth of: DV Tool: w / sacks of cement Port Collar: w / sack of cement
Packer Type: Size: Inch Set at: Feet
Total Depth: Plug Back Depth: Plug Back Method:

Geological Data:

Table with 4 columns: Formation Name, Formation Top, Formation Base, Completion Information. Rows 1 and 2.

UNDER PENALTY OF PERJURY I HEREBY ATTEST THAT THE INFORMATION CONTAINED HEREIN IS TRUE AND CORRECT TO THE BEST OF MY KNOWLEDGE

Submitted Electronically

Do NOT Write in This Space - KCC USE ONLY
Date Tested: Results: Date Plugged: Date Repaired: Date Put Back in Service:
Review Completed by: Comments:
TA Approved: Yes Denied Date:

Mail to the Appropriate KCC Conservation Office:

Table with 3 columns: District Office, Address, Phone. Rows for District Office #1, #2, #3, #4.

General

Well ID 125092
 Well Birchenough 3
 Company Sandridge
 Operator - * -
 Lease Name Birchenough 3
 Elevation 1276.00 ft
 Production Method Other
 Dataset Description

Comment

Surface Unit

Manufacturer - * -
 Unit Class - * -
 Unit API Number - * -
 Measured Stroke Length 100.000 in
 Rotation CW
 Counter Balance Effect (Weights Level) - * - Klb
 Weight Of Counter Weights 2000 lb

Prime Mover

Motor Type Electric
 Rated HP - * - HP
 Run Time 24 hr/day
 MFG/Comment - * -

Electric Motor Parameters

Rated Full Load AMPS - * -
 Rated Full Load RPM - * -
 Synchronous RPM 1200
 Voltage - * -
 Hertz 60
 Phase 3
 Power Consumption 5
 Power Demand 8 \$/KW

Tubulars

Tubing OD 2.000 in
 Casing OD 5.500 in
 Average Joint Length 31.700 ft
 Anchor Depth - * - ft
 Kelly Bushing 0.00 ft

Pump

Plunger Diameter - * - in
 Pump Intake Depth - * - ft
 **Total Rod Length > Pump Depth

Polished Rod

Polished Rod Diameter - * - in

Rod String

	Top Taper	Taper 2	Taper 3	Taper 4	Taper 5	Taper 6
Rod Type	- * -	- * -	- * -	- * -	- * -	- * -
Rod Length	- * -	- * -	- * -	- * -	- * -	- * - ft
Rod Diameter	- * -	- * -	- * -	- * -	- * -	- * - in
Rod Weight	0.0	0.0	0.0	0.0	0.0	0.0 lb

Total Rod Length 0
 Total Rod Weight 0.00

Damp Up 0.05
 Damp Down 0.05

Conditions

Pressure

Static BHP 2244.4 psi (g)
 Static BHP Method Acoustic
 Static BHP Date 01/02/2019

Producing BHP 1943.7 psi (g)
 Producing BHP Method Acoustic
 Producing BHP Date 12/09/2022
 Formation Depth 8420.00 ft

Surface Producing Pressures

Tubing Pressure 0.0 psi (g)
 Casing Pressure 9.7 psi (g)

Casing Pressure Buildup

Change in Pressure 0.1 psi
 Over Change in Time 1.50 min

Production

Oil Production 0 BBL/D
 Water Production 1 BBL/D
 Gas Production - * - Mscf/D
 Production Date 10/31/2016

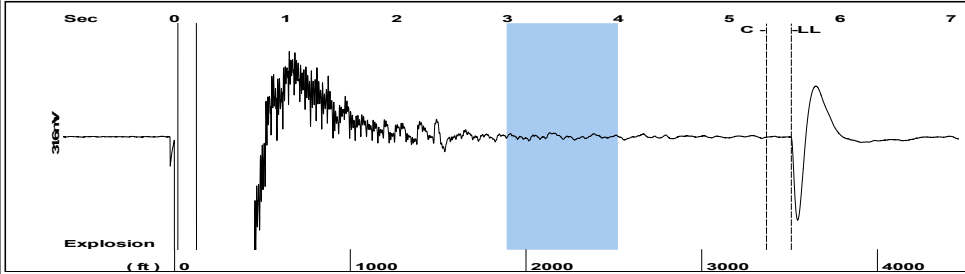
Temperatures

Surface Temperature 70 deg F
 Bottomhole Temperature 150 deg F

Fluid Properties

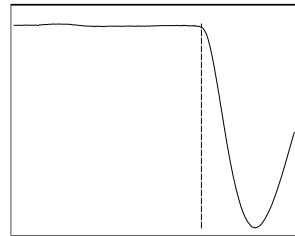
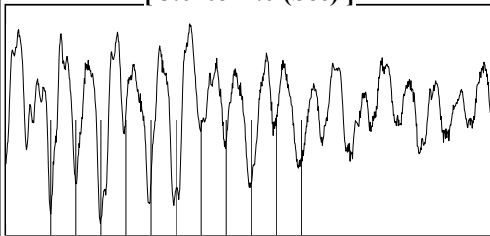
Oil API 40 deg.API
 Water Specific Gravity 1.05 Sp.Gr.H2O

Group: December 2022 Well: Birchenough 3 (acquired on: 12/09/22 12:53:30)



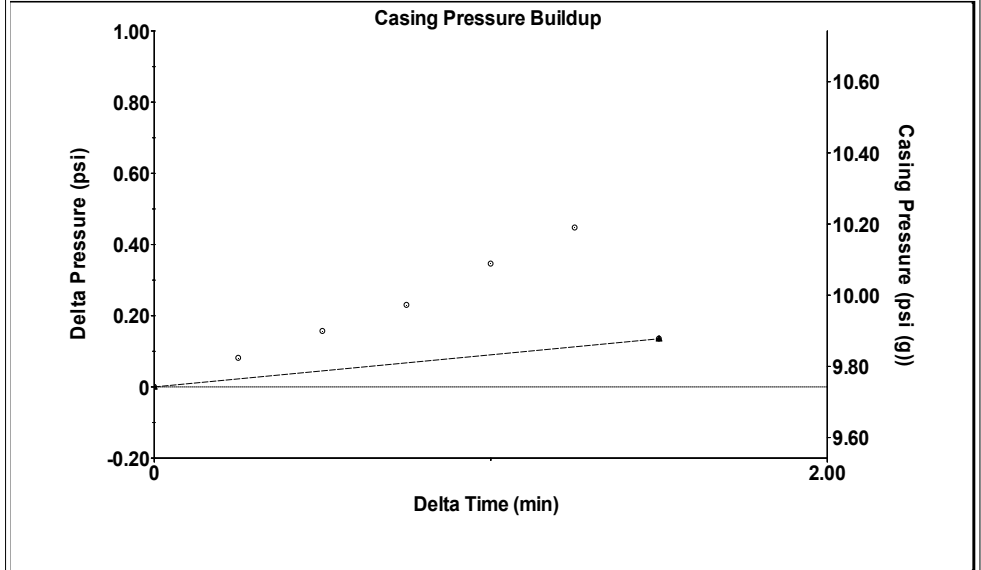
Filter Type High Pass Automatic Collar Count Yes Time 5.56 sec
 Manual Acoustic Veloc 1231.07 ft/s Manual JTS/sec 19.4175 Joints 110.718 Jts
 Depth 3509.75 ft

[3.0 to 4.0 (Sec)]



Analysis Method: Automatic

Group: December 2022 Well: Birchenough 3 (acquired on: 12/09/22 12:53:30)



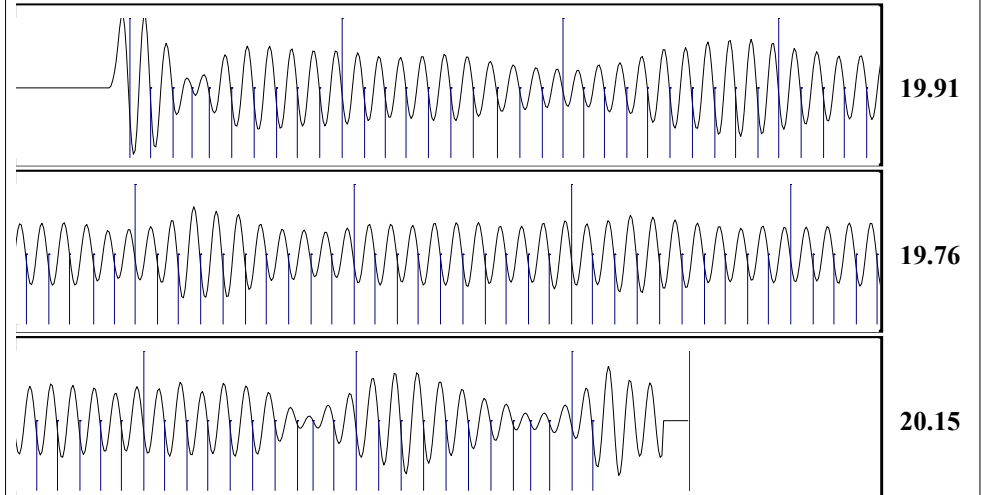
Change in Pressure 0.14 psi PT16722
 Change in Time 1.50 min Range 0 - ? psi

Group: December 2022 Well: Birchenough 3 (acquired on: 12/09/22 12:53:30)

Production		Potential	Casing Pressure	Static
Current			9.7 psi (g)	
Oil 0	- * -	BBL/D	Casing Pressure Buildup	Oil Column Height
Water 1	- * -	BBL/D	0.1 psi	MD 0 ft
Gas - * -	- * -	Mscf/D	1.50 min	
IPR Method	Vogel		Gas/Liquid Interface Pressure	Water Column Height
PBHP/SBHP	- * -		12.0 psi (g)	MD 4910 ft
Production Efficiency	0.0		Liquid Level Depth	
			3509.75 ft	
Oil 40 deg.API			Tubing Intake Depth	
Water 1.05 Sp.Gr.H2O			- * - ft	
Gas 0.72 Sp.Gr.AIR			Formation Depth	
Acoustic Velocity	1262.5 ft/s		8420.00 ft	
Static BHP			2244.4 psi (g)	

first shot

Group: December 2022 Well: Birchenough 3 (acquired on: 12/09/22 12:53:30)



Acoustic Velocity 1262.5 ft/s Joints counted 101
 Joints Per Second 19.9132 jts/sec Joints to liquid level 110.718
 Depth to liquid level 3509.75 ft Filter Width 17.4175 21.4175
 Automatic Collar Count Yes Time to 1st Collar 0.264 5.336

December 14, 2022

Leah Irish
SandRidge Exploration and Production LLC
1 E SHERIDAN AVE STE 500
Suite 500
OKLAHOMA CITY, OK 73104-2494

Re: Temporary Abandonment
API 15-077-20318-00-00
BIRCHENOUGH 3
SE/4 Sec.27-33S-06W
Harper County, Kansas

Dear Leah Irish:

Your application for Temporary Abandonment (TA) for the above-listed well is denied for the following reasons(s):

Shut-in Over 10 years

Pursuant to K.A.R. 82-3-111, the well must be plugged, or returned to service, or obtain temporary abandonment status by 01/13/2023.

This deadline does NOT override any compliance deadline given to you in any Commission Order.

You may contact me if you have any questions.

Sincerely,
Nicholas Barkley, ECRS
KCC DISTRICT 2