

KANSAS CORPORATION COMMISSION
OIL & GAS CONSERVATION DIVISION

Form must be Typed
Form must be signed

TEMPORARY ABANDONMENT WELL APPLICATION

All blanks must be complete

OPERATOR: License#
Name:
Address 1:
Address 2:
City: State: Zip:
Contact Person:
Phone:
Contact Person Email:
Field Contact Person:
Field Contact Person Phone:

API No. 15-
Spot Description:
Sec. Twp. S. R.
feet from N / S Line of Section
feet from E / W Line of Section
GPS Location: Lat: , Long:
Datum: NAD27 NAD83 WGS84
County: Elevation: GL KB
Lease Name: Well #:
Well Type: Oil Gas OG WSW Other:
SWD Permit #: ENHR Permit #:
Gas Storage Permit #:
Spud Date: Date Shut-In:

Table with 7 columns: Conductor, Surface, Production, Intermediate, Liner, Tubing. Rows include Size, Setting Depth, Amount of Cement, Top of Cement, Bottom of Cement.

Casing Fluid Level from Surface: How Determined? Date:
Casing Squeeze(s): to w / sacks of cement, to w / sacks of cement. Date:
Do you have a valid Oil & Gas Lease? Yes No
Depth and Type: Junk in Hole at Tools in Hole at Casing Leaks: Yes No Depth of casing leak(s):
Type Completion: ALT. I ALT. II Depth of: DV Tool: w / sacks of cement Port Collar: w / sack of cement
Packer Type: Size: Inch Set at: Feet
Total Depth: Plug Back Depth: Plug Back Method:

Geological Data:

Table with 4 columns: Formation Name, Formation Top, Formation Base, Completion Information. Rows 1 and 2.

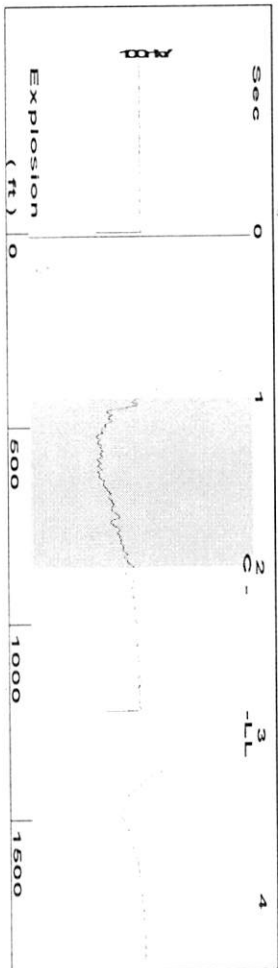
UNDER PENALTY OF PERJURY I HEREBY ATTEST THAT THE INFORMATION CONTAINED HEREIN IS TRUE AND CORRECT TO THE BEST OF MY KNOWLEDGE

Submitted Electronically

Do NOT Write in This Space - KCC USE ONLY
Date Tested: Results: Date Plugged: Date Repaired: Date Put Back in Service:
Review Completed by: Comments:
TA Approved: Yes Denied Date:

Mail to the Appropriate KCC Conservation Office:

Table with 3 columns: District Office #, Address, Phone. Includes map of Kansas with numbered districts 1-4.



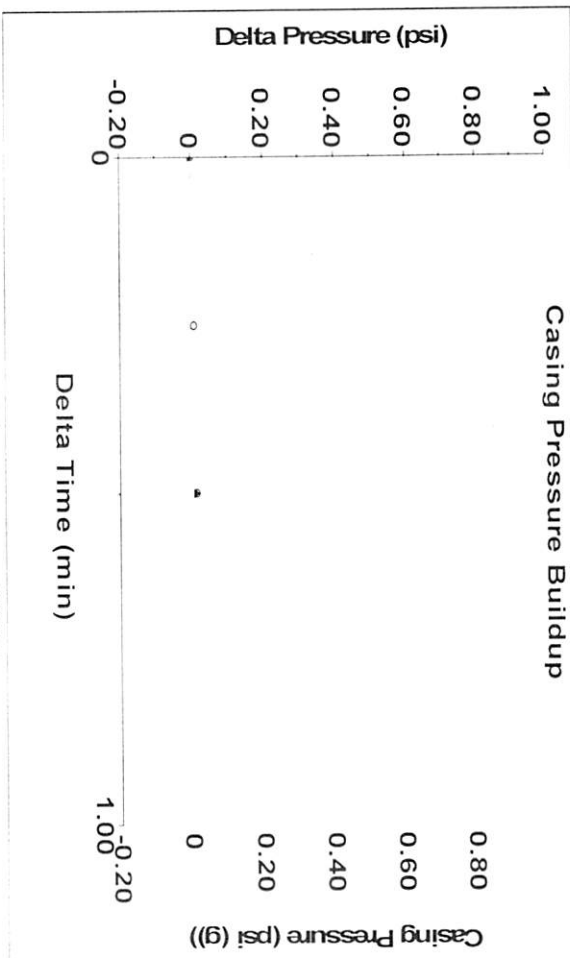
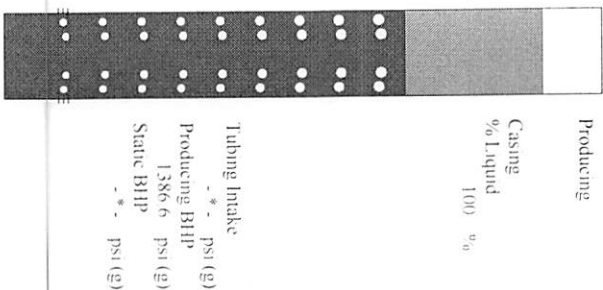
Filter Type: High Pass
 Manual Acoustic Veloc: 866.12 ft/s
 Automatic Collar Count: Yes
 Manual JTS/sec: 13.6612
 Time: 2.846 sec
 Joints: 38.5396 Jts
 Depth: 1221.70 ft



Analysis Method: Automatic

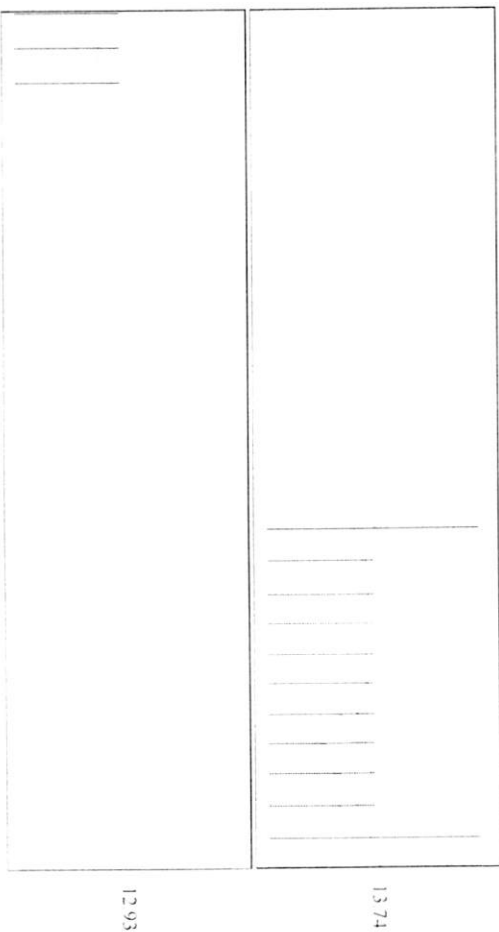
Group: 3G Production, LLC Well: SICU 18 (acquired on: 11/30/22 13:53:28)

Production	Potential	Casing Pressure	Producing
Current	BBL/D	-0.0 psi (g)	Casing % Liquid
Oil	BBL/D	0.014 psi	100 %
Water	Misc/D	0.50 mm	
Gas		Gas/Liquid Interface Pressure	
IPR Method	Vogel	0.7 psi (g)	
PBHP/SBHP			
Production Efficiency	0.0		
Oil	40 deg API	Liquid Level Depth	
Water	1.05 Sp Gr H2O	1221.70 ft	
Gas	1.10 Sp Gr AIR	Tubing Intake Depth	
Acoustic Velocity	858.542 ft/s	Formation Depth	
		4270.00 ft	
Formation Submergence			
Total Gaseous Liquid Column HT (TVD)			
Equivalent Gas Free Liquid HT (TVD)			
Acoustic Test			



Change in Pressure: 0.01 psi
 Change in Time: 0.50 min
 PTT: 5469
 Range: 0.9 psi

Group: 3G Production, LLC Well: SICU 18 (acquired on: 11/30/22 13:53:28)



Acoustic Velocity	858.542 ft/s	Joints counted	13
Joints Per Second	13.5412 ft/sec	Joints to Liquid level	38.5396
Depth to Iniquid level	1221.7 ft	Filter Width	11.6612
Automatic Collar Count	Yes	Time to 1st Collar	1.204
			2.164

December 14, 2022

Kenneth C Gates
Iuka-Carmi Development LLC
PO BOX 847
PRATT, KS 67124-0847

Re: Temporary Abandonment
API 15-151-10238-00-00
SICU 18
SW/4 Sec.18-27S-12W
Pratt County, Kansas

Dear Kenneth C Gates:

"Your temporary abandonment (TA) application for the well listed above has been approved. In accordance with K.A.R. 82-3-111 the TA status of this well will expire 12/14/2023.

- * If you return this well to service or plug it, please notify the District Office.
- * If you sell this well you are required to file a Transfer of Operator form, T-1.
- * If the well will remain temporarily abandoned, you must submit a new TA application, CP-111, before 12/14/2023.

You may contact me at the number above if you have questions.

Very truly yours,

Michael Maier"