

KANSAS CORPORATION COMMISSION
OIL & GAS CONSERVATION DIVISION

Form must be Typed
Form must be signed

TEMPORARY ABANDONMENT WELL APPLICATION

All blanks must be complete

OPERATOR: License#
Name:
Address 1:
Address 2:
City: State: Zip:
Contact Person:
Phone:
Contact Person Email:
Field Contact Person:
Field Contact Person Phone:

API No. 15-
Spot Description:
Sec. Twp. S. R.
GPS Location: Lat: Long:
Datum: NAD27 NAD83 WGS84
County: Elevation:
Lease Name: Well #:
Well Type: Oil Gas OG WSW Other:
SWD Permit #: ENHR Permit #:
Gas Storage Permit #:
Spud Date: Date Shut-In:

Table with 7 columns: Conductor, Surface, Production, Intermediate, Liner, Tubing. Rows include Size, Setting Depth, Amount of Cement, Top of Cement, Bottom of Cement.

Casing Fluid Level from Surface: How Determined? Date:
Casing Squeeze(s): to w / sacks of cement, to w / sacks of cement. Date:
Do you have a valid Oil & Gas Lease? Yes No
Depth and Type: Junk in Hole at Tools in Hole at Casing Leaks: Yes No Depth of casing leak(s):
Type Completion: ALT. I ALT. II Depth of: DV Tool: w / sacks of cement Port Collar: w / sack of cement
Packer Type: Size: Inch Set at: Feet
Total Depth: Plug Back Depth: Plug Back Method:

Geological Data:

Table with 4 columns: Formation Name, Formation Top, Formation Base, Completion Information. Rows 1 and 2.

UNDER PENALTY OF PERJURY I HEREBY ATTEST THAT THE INFORMATION CONTAINED HEREIN IS TRUE AND CORRECT TO THE BEST OF MY KNOWLEDGE

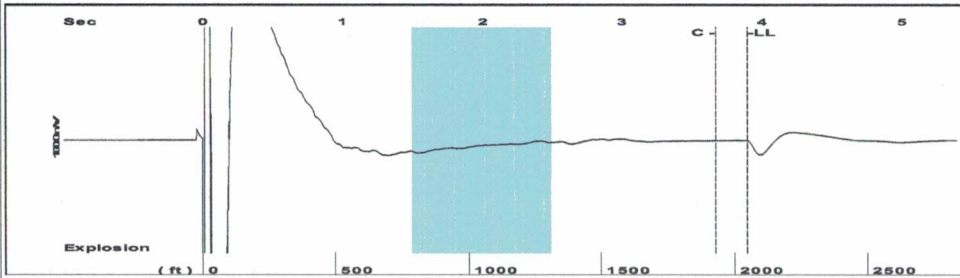
Submitted Electronically

Do NOT Write in This Space - KCC USE ONLY
Date Tested: Results: Date Plugged: Date Repaired: Date Put Back in Service:
Review Completed by: Comments:
TA Approved: Yes Denied Date:

Mail to the Appropriate KCC Conservation Office:

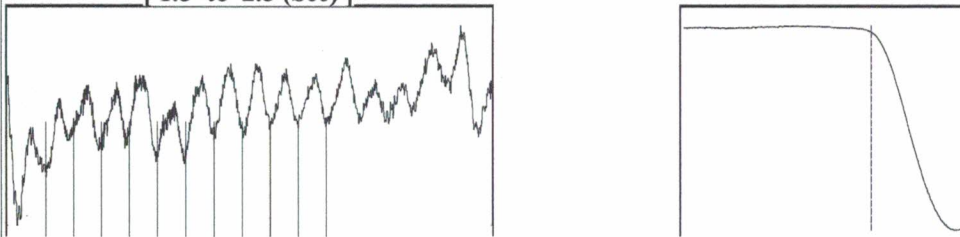
Table with 3 columns: District Office, Address, Phone. Rows for District Office #1, #2, #3, #4.

Group: MyWells Well: Sooby #1 (acquired on: 12/20/22 14:02:04)



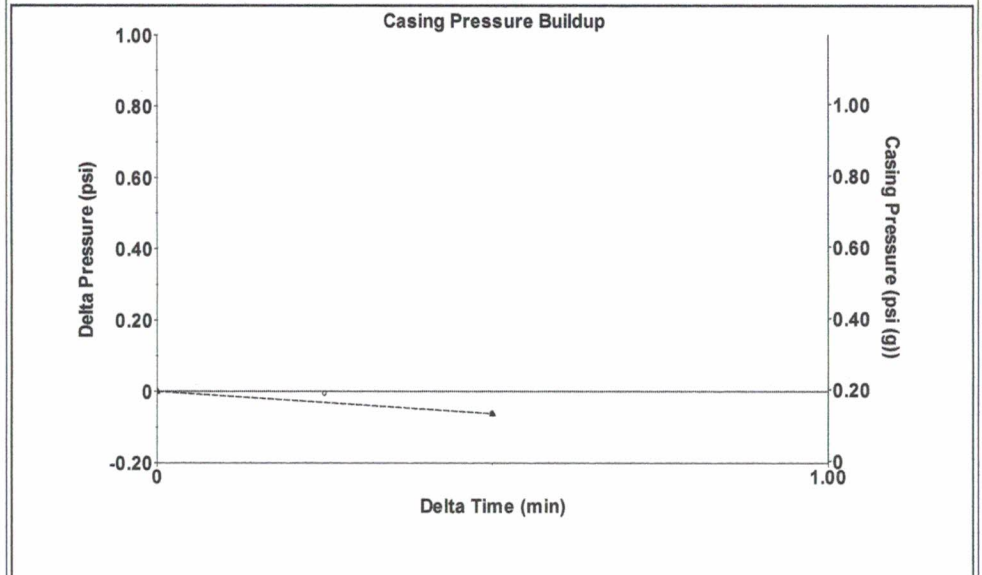
Filter Type High Pass Automatic Collar Count Yes Time 3.893 sec  
 Manual Acoustic Veloc 1070.81 ft/s Manual JTS/sec 17.2712 Joints 66.042 Jts  
 Depth 2047.30 ft

[ 1.5 to 2.5 (Sec) ]



Analysis Method: Automatic

Group: MyWells Well: Sooby #1 (acquired on: 12/20/22 14:02:04)



Change in Pressure -0.06 psi PT15504  
 Change in Time 0.50 min Range 0 - ? psi

Group: MyWells Well: Sooby #1 (acquired on: 12/20/22 14:02:04)

Production Current Potential  
 Oil 0 - \* - BBL/D  
 Water 0 - \* - BBL/D  
 Gas 0.0 - \* - Mscf/D

IPR Method Vogel  
 PBHP/SBHP - \* -  
 Production Efficiency 0.0

Oil 39 deg.API  
 Water 1.05 Sp.Gr.H2O  
 Gas 0.92 Sp.Gr.AIR

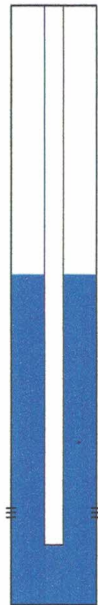
Acoustic Velocity 1051.79 ft/s

Formation Submergence  
 Total Gaseous Liquid Column HT (TVD) 2673 ft  
 Equivalent Gas Free Liquid HT (TVD) 2673 ft

Acoustic Test

Liquid Level Depth  
 2047.30 ft

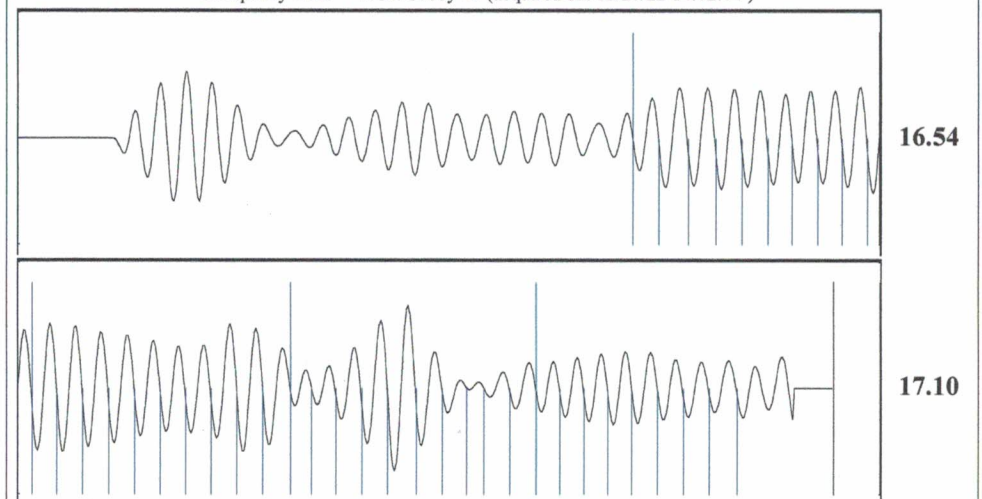
Pump Intake Depth  
 4720.00 ft  
 Formation Depth  
 4401.00 ft



Producing  
 Annular Gas Flow 0 Mscf/D  
 % Liquid 100 %

Pump Intake 1216.3 psi (g)  
 Producing BHP 1071.3 psi (g)  
 Static BHP - \* - psi (g)

Group: MyWells Well: Sooby #1 (acquired on: 12/20/22 14:02:04)



Acoustic Velocity 1051.79 ft/s Joints counted 38  
 Joints Per Second 16.9643 jts/sec Joints to liquid level 66.042  
 Depth to liquid level 2047.3 ft Filter Width 15.2712 19.2712  
 Automatic Collar Count Yes Time to 1st Collar 1.428 3.668

December 22, 2022

Catherine H Stucky  
Hartman Oil Co., Inc.  
10500 E BERKELEY SQ PKWY STE 100  
WICHITA, KS 67206-6816

Re: Temporary Abandonment  
API 15-055-10063-00-00  
SOOBY 1  
NW/4 Sec.27-22S-33W  
Finney County, Kansas

Dear Catherine H Stucky:

"Your temporary abandonment (TA) application for the well listed above has been approved. In accordance with K.A.R. 82-3-111 the TA status of this well will expire 12/22/2023.

- \* If you return this well to service or plug it, please notify the District Office.
- \* If you sell this well you are required to file a Transfer of Operator form, T-1.
- \* If the well will remain temporarily abandoned, you must submit a new TA application, CP-111, before 12/22/2023.

You may contact me at the number above if you have questions.

Very truly yours,

Michael Maier"