

KANSAS CORPORATION COMMISSION
OIL & GAS CONSERVATION DIVISION

TEMPORARY ABANDONMENT WELL APPLICATION

OPERATOR: License#
Name:
Address 1:
Address 2:
City: State: Zip:
Contact Person:
Phone:
Contact Person Email:
Field Contact Person:
Field Contact Person Phone:

API No. 15-
Spot Description:
Sec. Twp. S. R.
GPS Location: Lat: Long:
Datum: NAD27 NAD83 WGS84
County: Elevation:
Lease Name: Well #:
Well Type: Oil Gas OG WSW Other:
SWD Permit #: ENHR Permit #:
Gas Storage Permit #:
Spud Date: Date Shut-In:

Table with 7 columns: Conductor, Surface, Production, Intermediate, Liner, Tubing. Rows include Size, Setting Depth, Amount of Cement, Top of Cement, Bottom of Cement.

Casing Fluid Level from Surface: How Determined? Date:
Casing Squeeze(s): to w / sacks of cement, to w / sacks of cement. Date:
Do you have a valid Oil & Gas Lease? Yes No
Depth and Type: Junk in Hole at Tools in Hole at Casing Leaks: Yes No Depth of casing leak(s):
Type Completion: ALT. I ALT. II Depth of: DV Tool: w / sacks of cement Port Collar: w / sack of cement
Packer Type: Size: Inch Set at: Feet
Total Depth: Plug Back Depth: Plug Back Method:

Geological Date:

Table with 2 columns: Formation Name, Completion Information. Rows 1 and 2 for formation details.

UNDER PENALTY OF PERJURY I HEREBY ATTEST THAT THE INFORMATION CONTAINED HEREIN IS TRUE AND CORRECT TO THE BEST OF MY KNOWLEDGE

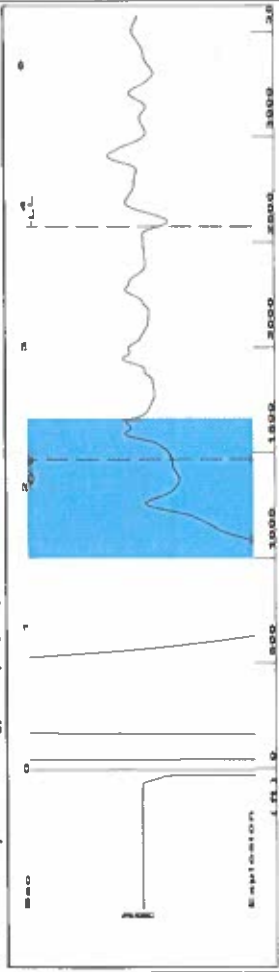
Submitted Electronically

Form with fields: Do NOT Write in This Space - KCC USE ONLY, Date Tested, Results, Date Plugged, Date Repaired, Date Put Back in Service, Review Completed by, Comments, TA Approved: Yes Denied, Date.

Mail to the Appropriate KCC Conservation Office:

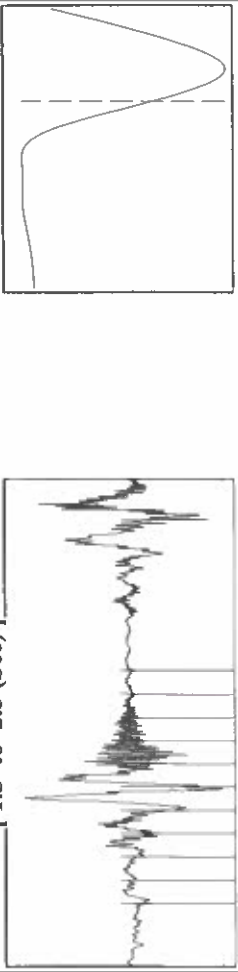
Table with 2 columns: Office Address, Phone. Rows for KCC District Office #1, #2, #3, #4.

Group: Merit Energy Company-Ulysses Well: Rixon C-2 (acquired on: 12/18/22 14:45:10)

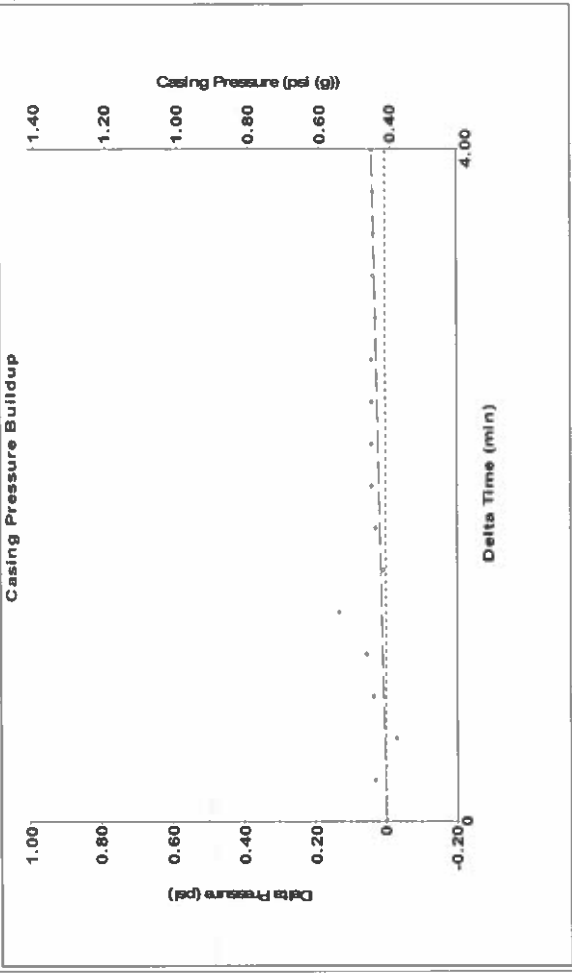


Filter Type High Pass Automatic Collar Count Yes Time 3.855 sec  
 Manual Acoustic Velo 1323.59 ft/s Manual JTS/sec 20.8768 Joints 81.2149 Jts  
 Depth 2574.51 ft

1.5 to 2.5 (Sec)



Group: Merit Energy Company-Ulysses Well: Rixon C-2 (acquired on: 12/18/22 14:45:10)



Change in Pressure 0.04 psi PT18865 Range  
 Change in Time 4.00 min 0 - ? psi

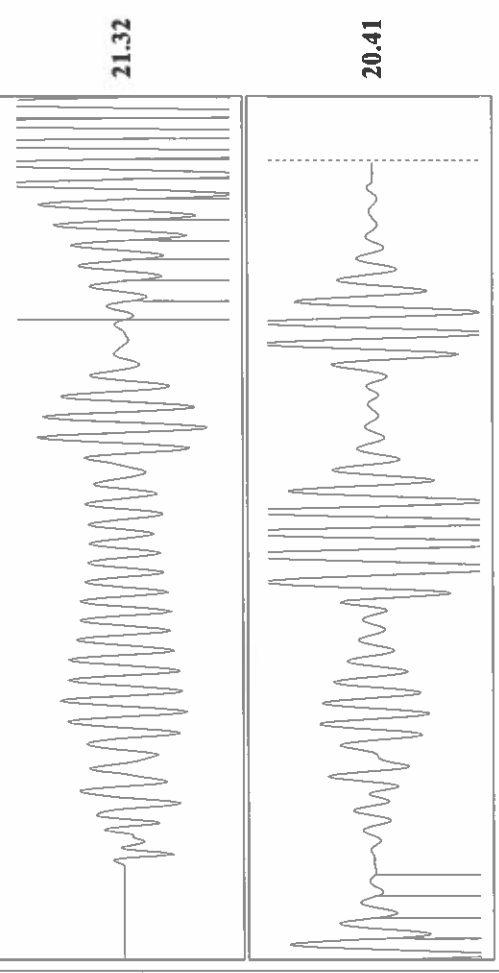
**Analysis Method: Automatic**

Group: Merit Energy Company-Ulysses Well: Rixon C-2 (acquired on: 12/18/22 14:45:10)

|                                      |              |                               |                   |
|--------------------------------------|--------------|-------------------------------|-------------------|
| Production                           | Potential    | Casing Pressure               | Producing         |
| Oil - * -                            | BBL/D        | 0.4 psi (g)                   | Annular           |
| Water - * -                          | BBL/D        | Casing Pressure Buildup       | Gas Flow 0 Mscf/D |
| Gas - * -                            | Mscf/D       | 0.0 psi                       | % Liquid 100 %    |
| IPR Method                           | Vogel        | Gas/Liquid Interface Pressure | Pump Intake       |
| PBHP/SBHP                            | - * -        | 1.3 psi (g)                   | 165.1 psi (g)     |
| Production Efficiency                | 0.0          | Liquid Level Depth            | Producing BHP     |
|                                      |              | 2574.51 ft                    | 127.7 psi (g)     |
| Oil 40 deg.API                       |              | Pump Intake Depth             | Static BHP        |
| Water 1.05 Sp.Gr.H2O                 |              | 3061.00 ft                    | - * - psi (g)     |
| Gas 0.67 Sp.Gr.AIR                   |              | Formation Depth               |                   |
| Acoustic Velocity                    | 1335.67 ft/s | 2949.00 ft                    |                   |
| Formation Submergence                |              |                               |                   |
| Total Gaseous Liquid Column HT (TVD) | 486 ft       |                               |                   |
| Equivalent Gas Free Liquid HT (TVD)  | 486 ft       |                               |                   |

12/18/22

Group: Merit Energy Company-Ulysses Well: Rixon C-2 (acquired on: 12/18/22 14:45:10)



Acoustic Velocity 1335.67 ft/s Joints counted 15  
 Joints Per Second 21.0674 Jts/sec 81.2149  
 Depth to liquid level 2574.51 ft Filter Width 22.8768  
 Automatic Collar Count Yes Time to 1st Collar 1.484 2.196

December 30, 2022

Katherine McClurkan  
Merit Energy Company, LLC  
13727 Noel Road, Suite 1200  
Dallas, TX 75240-7362

Re: Temporary Abandonment  
API 15-067-20433-00-00  
Rixon C 2  
NW/4 Sec.34-27S-35W  
Grant County, Kansas

Dear Katherine McClurkan:

"Your temporary abandonment (TA) application for the well listed above has been approved. In accordance with K.A.R. 82-3-111 the TA status of this well will expire 12/30/2023.

- \* If you return this well to service or plug it, please notify the District Office.
- \* If you sell this well you are required to file a Transfer of Operator form, T-1.
- \* If the well will remain temporarily abandoned, you must submit a new TA application, CP-111, before 12/30/2023.

You may contact me at the number above if you have questions.

Very truly yours,

Michael Maier"