

KANSAS CORPORATION COMMISSION
OIL & GAS CONSERVATION DIVISION

TEMPORARY ABANDONMENT WELL APPLICATION

OPERATOR: License#
Name:
Address 1:
Address 2:
City: State: Zip:
Contact Person:
Phone:
Contact Person Email:
Field Contact Person:
Field Contact Person Phone:

API No. 15-
Spot Description:
Sec. Twp. S. R.
feet from N / S Line of Section
feet from E / W Line of Section
GPS Location: Lat: , Long:
Datum: NAD27 NAD83 WGS84
County: Elevation: GL KB
Lease Name: Well #:
Well Type: Oil Gas OG WSW Other:
SWD Permit #: ENHR Permit #:
Gas Storage Permit #:
Spud Date: Date Shut-In:

Table with 7 columns: Conductor, Surface, Production, Intermediate, Liner, Tubing. Rows include Size, Setting Depth, Amount of Cement, Top of Cement, Bottom of Cement.

Casing Fluid Level from Surface: How Determined? Date:
Casing Squeeze(s): to w / sacks of cement, to w / sacks of cement. Date:
Do you have a valid Oil & Gas Lease? Yes No
Depth and Type: Junk in Hole at Tools in Hole at Casing Leaks: Yes No Depth of casing leak(s):
Type Completion: ALT. I ALT. II Depth of: DV Tool: w / sacks of cement Port Collar: w / sack of cement
Packer Type: Size: Inch Set at: Feet
Total Depth: Plug Back Depth: Plug Back Method:

Geological Data:

Table with 4 columns: Formation Name, Formation Top, Formation Base, Completion Information. Rows 1 and 2.

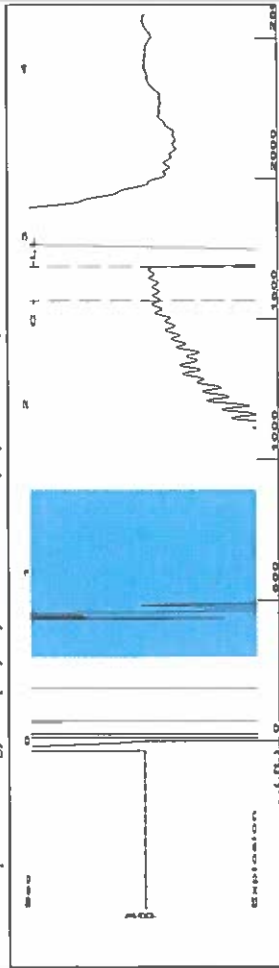
UNDER PENALTY OF PERJURY I HEREBY ATTEST THAT THE INFORMATION CONTAINED HEREIN IS TRUE AND CORRECT TO THE BEST OF MY KNOWLEDGE

Submitted Electronically

Do NOT Write in This Space - KCC USE ONLY
Date Tested: Results: Date Plugged: Date Repaired: Date Put Back in Service:
Review Completed by: Comments:
TA Approved: Yes Denied Date:

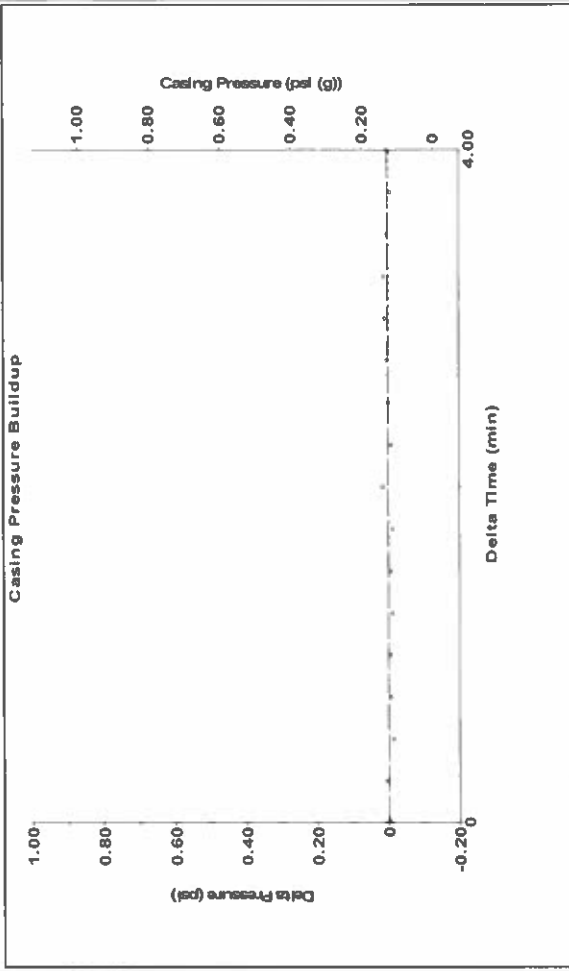
Mail to the Appropriate KCC Conservation Office:

Table with 3 columns: District Office, Address, Phone. Rows for District Office #1, #2, #3, #4.



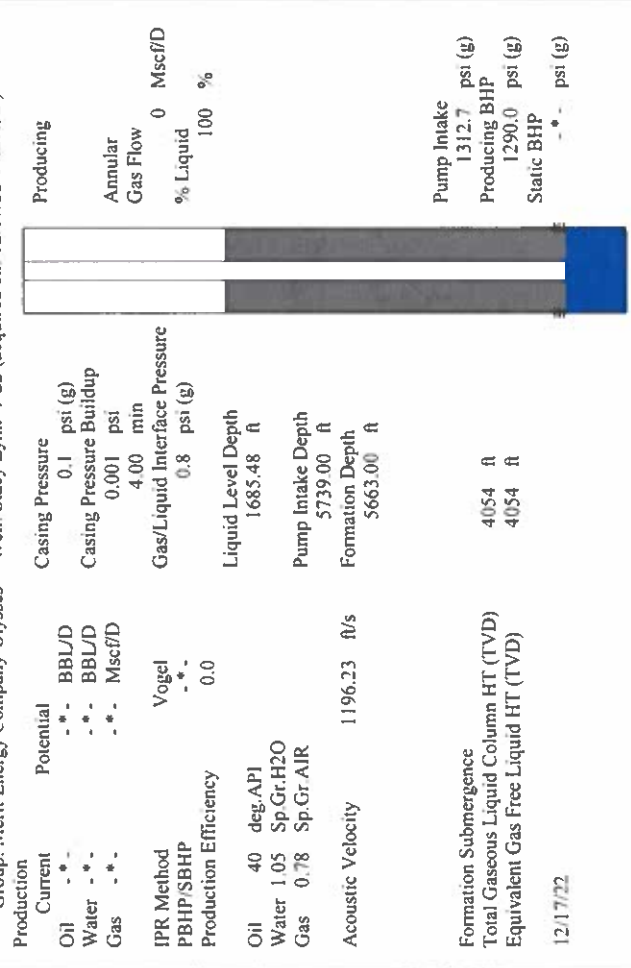
Filter Type High Pass Automatic Collar Count Yes Time 2.818 sec
 Manual/Acoustic Velo 1159.05 ft/s Manual JTS/sec 18.2815 Joints 53.1698 Jts
 Depth 1685.48 ft

[0.5 to 1.5 (Sec)]

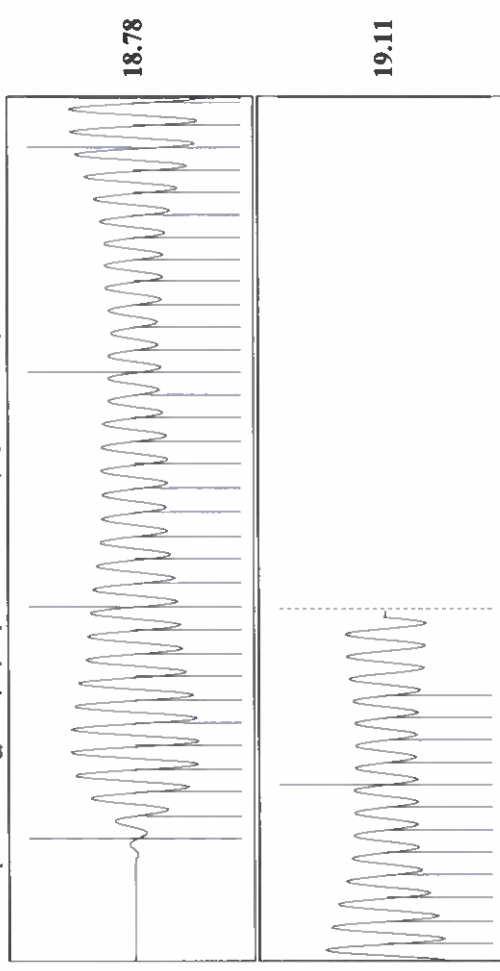


Change in Pressure 0.00 psi PT18865 Range
 Change in Time 4.00 min

Analysis Method: Automatic



Production	Potential	Casing Pressure	Producing
Oil -*- BBL/D	0.1 psi (g)	0.1 psi (g)	Annular
Water -*- BBL/D	0.001 psi	0.001 psi	Gas Flow 0 Mscf/D
Gas -*- Mscf/D	4.00 min	4.00 min	% Liquid 100 %
IPR Method Vogel	Gas/Liquid Interface Pressure	0.8 psi (g)	
PBHP/SBHP -*-	Liquid Level Depth	1685.48 ft	
Production Efficiency 0.0	Pump Intake Depth	5739.00 ft	
Oil 40 deg-API	Formation Depth	5663.00 ft	
Water 1.05 Sp.Gr.H2O			
Gas 0.78 Sp.Gr.AIR			
Acoustic Velocity 1196.23 ft/s			
Formation Submergence			
Total Gaseous Liquid Column HT (TVD) 4054 ft			
Equivalent Gas Free Liquid HT (TVD) 4054 ft			
12/17/22			



Acoustic Velocity 1196.23 ft/s Joints counted 44
 Joints Per Second 18.8679 jts/sec Joints to liquid level 53.1698
 Depth to liquid level 1685.48 ft Filler Width 20.2815
 Automatic Collar Count Yes Time to 1st Collar 2.616

Conservation Division
District Office No. 1
210 E. Frontview, Suite A
Dodge City, KS 67801



Phone: 620-682-7933
<http://kcc.ks.gov/>

Dwight D. Keen, Chair
Susan K. Duffy, Commissioner
Andrew J. French, Commissioner

Laura Kelly, Governor

December 30, 2022

Katherine McClurkan
Merit Energy Company, LLC
446 South Road M
Dallas, TX 75240

Re: Temporary Abandonment
API 15-187-20797-00-00
Stacy Lynn 1-22
SW/4 Sec.22-30S-39W
Stanton County, Kansas

Dear Katherine McClurkan:

"Your temporary abandonment (TA) application for the well listed above has been approved. In accordance with K.A.R. 82-3-111 the TA status of this well will expire 12/30/2023.

- * If you return this well to service or plug it, please notify the District Office.
- * If you sell this well you are required to file a Transfer of Operator form, T-1.
- * If the well will remain temporarily abandoned, you must submit a new TA application, CP-111, before 12/30/2023.

You may contact me at the number above if you have questions.

Very truly yours,

Michael Maier"