

KANSAS CORPORATION COMMISSION
OIL & GAS CONSERVATION DIVISION

Form must be Typed
Form must be signed

TEMPORARY ABANDONMENT WELL APPLICATION

All blanks must be complete

OPERATOR: License#
Name:
Address 1:
Address 2:
City: State: Zip:
Contact Person:
Phone:
Contact Person Email:
Field Contact Person:
Field Contact Person Phone:

API No. 15-
Spot Description:
Sec. Twp. S. R.
feet from N / S Line of Section
feet from E / W Line of Section
GPS Location: Lat: , Long:
Datum: NAD27 NAD83 WGS84
County: Elevation: GL KB
Lease Name: Well #:
Well Type: (check one) Oil Gas OG WSW Other:
SWD Permit #: ENHR Permit #:
Gas Storage Permit #:
Spud Date: Date Shut-In:

Table with 7 columns: Conductor, Surface, Production, Intermediate, Liner, Tubing. Rows include Size, Setting Depth, Amount of Cement, Top of Cement, Bottom of Cement.

Casing Fluid Level from Surface: How Determined? Date:
Casing Squeeze(s): to w / sacks of cement, to w / sacks of cement. Date:
Do you have a valid Oil & Gas Lease? Yes No
Depth and Type: Junk in Hole at Tools in Hole at Casing Leaks: Yes No Depth of casing leak(s):
Type Completion: ALT. I ALT. II Depth of: DV Tool: w / sacks of cement Port Collar: w / sack of cement
Packer Type: Size: Inch Set at: Feet
Total Depth: Plug Back Depth: Plug Back Method:

Geological Data:

Table with 4 columns: Formation Name, Formation Top, Formation Base, Completion Information. Rows 1 and 2.

UNDER PENALTY OF PERJURY I HEREBY ATTEST THAT THE INFORMATION CONTAINED HEREIN IS TRUE AND CORRECT TO THE BEST OF MY KNOWLEDGE

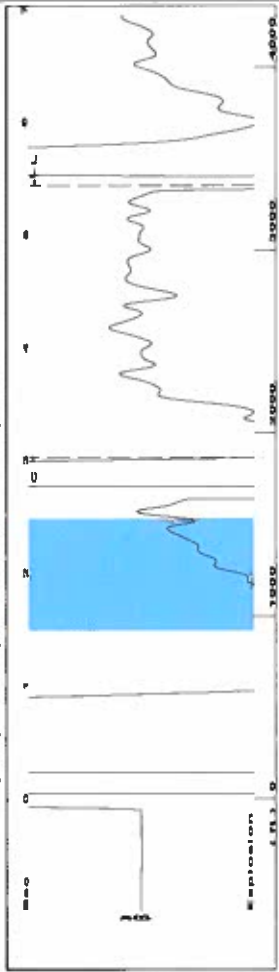
Submitted Electronically

Do NOT Write in This Space - KCC USE ONLY
Date Tested: Results: Date Plugged: Date Repaired: Date Put Back in Service:
Review Completed by: Comments:
TA Approved: Yes Denied Date:

Mail to the Appropriate KCC Conservation Office:

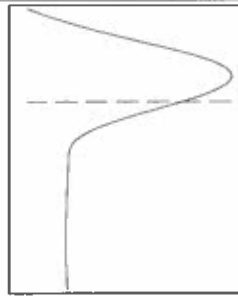
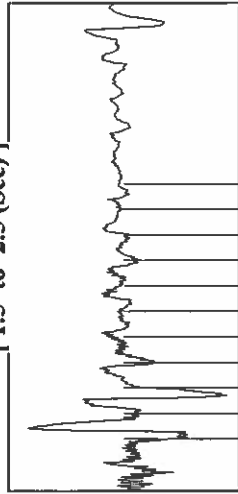
Table with 3 columns: District Office #, Address, Phone. Includes map of Kansas with numbered districts 1-4.

Group: Oxy USA Ulysses Well: KU 6-1 (acquired on: 09/28/22 12:16:14)

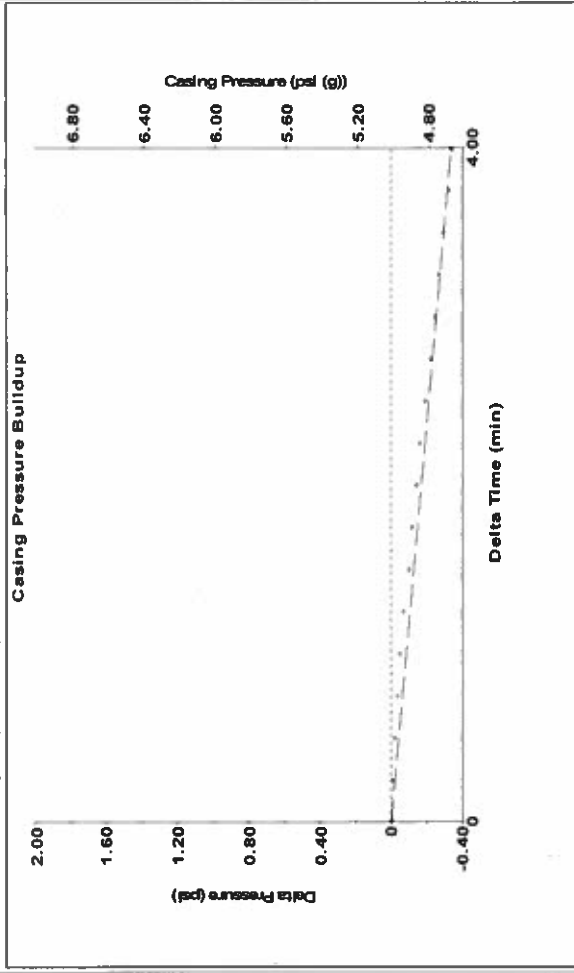


Filter Type High Pass Automatic Collar Count Yes
 Manual Acoustic Velo 1209.92 ft/s Manual JTS/sec 19,084
 Time 5.441 sec
 Joints 105,832 Jts
 Depth 3354.87 ft

[1.5 to 2.5 (Sec)]



Group: Oxy USA Ulysses Well: KU 6-1 (acquired on: 09/28/22 12:16:14)

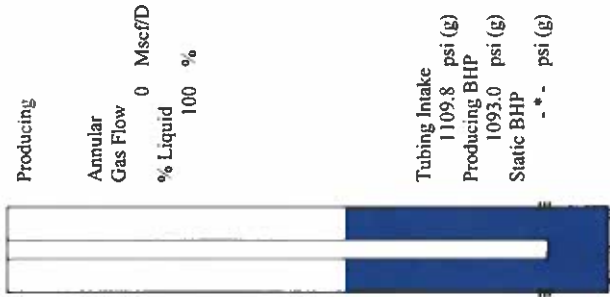


Change in Pressure -0.34 psi PT18865 Range
 Change in Time 4.00 min

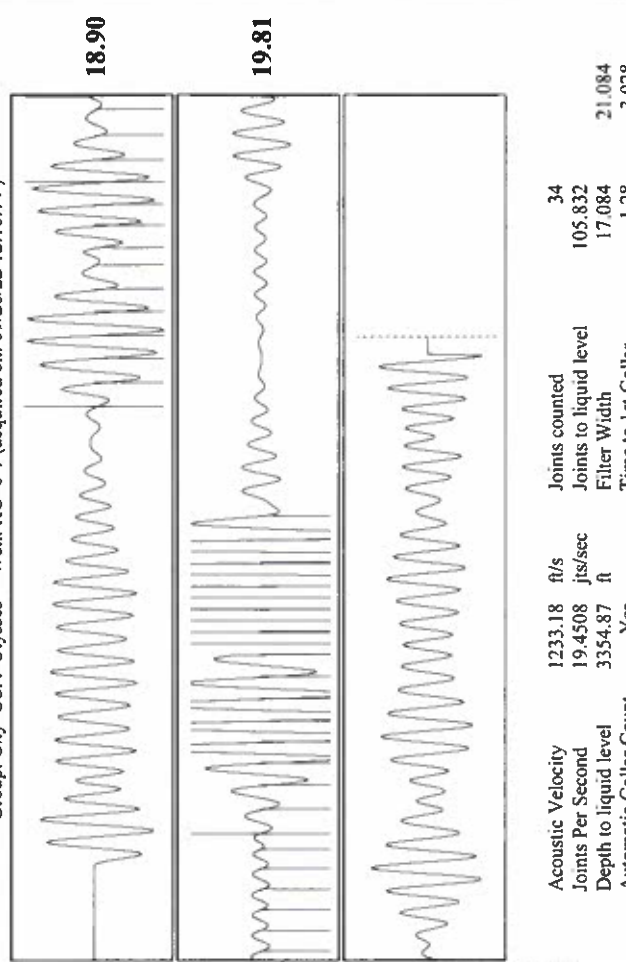
Analysis Method: Automatic

Group: Oxy USA Ulysses Well: KU 6-1 (acquired on: 09/28/22 12:16:14)

Production	Potential	Casing Pressure	5.0 psi (g)
Oil	-*- BBL/D	Casing Pressure Buildup	-0.336 psi
Water	-*- BBL/D	Gas/Liquid Interface Pressure	6.8 psi (g)
Gas	-*- Mscf/D	Liquid Level Depth	3354.87 ft
IPR Method	Vogel	Tubing Intake Depth	5781.00 ft
PBHP/SBHP	-*-	Formation Depth	5744.00 ft
Production Efficiency	0.0		
Oil	40 deg-API		
Water	1.05 Sp.Gr.H2O		
Gas	0.76 Sp.Gr.AIR		
Acoustic Velocity	1233.18 ft/s		
Formation Submergence			
Total Gaseous Liquid Column HT (TVD)	2389 ft		
Equivalent Gas Free Liquid HT (TVD)	2389 ft		
9/28/22			



Group: Oxy USA Ulysses Well: KU 6-1 (acquired on: 09/28/22 12:16:14)



Acoustic Velocity 1233.18 ft/s Joints counted 34
 Joints Per Second 19,4508 Jts/sec 105,832
 Depth to liquid level 3354.87 ft 17,084 21,084
 Automatic Collar Count Yes Time to 1st Collar 1.28 3,028

Conservation Division
District Office No. 1
210 E. Frontview, Suite A
Dodge City, KS 67801



Phone: 620-682-7933
<http://kcc.ks.gov/>

Dwight D. Keen, Chair
Susan K. Duffy, Commissioner
Andrew J. French, Commissioner

Laura Kelly, Governor

January 05, 2023

Katherine McClurkan
Merit Energy Company, LLC
446 South Road M
Dallas, TX 75240

Re: Temporary Abandonment
API 15-187-21079-00-01
KU 6-I20-29-39
SE/4 Sec.20-29S-39W
Stanton County, Kansas

Dear Katherine McClurkan:

Your application for Temporary Abandonment (TA) for the above-listed well is denied for the following reasons(s):

Shut-in Over 10 years

Pursuant to K.A.R. 82-3-111, the well must be plugged, or returned to service, or obtain temporary abandonment status by 02/04/2023.

This deadline does NOT override any compliance deadline given to you in any Commission Order.

You may contact me if you have any questions.

Sincerely,
Michael Maier
KCC DISTRICT 1