

KANSAS CORPORATION COMMISSION
OIL & GAS CONSERVATION DIVISION

TEMPORARY ABANDONMENT WELL APPLICATION

OPERATOR: License#
Name:
Address 1:
Address 2:
City: State: Zip:
Contact Person:
Phone:
Contact Person Email:
Field Contact Person:
Field Contact Person Phone:

API No. 15-
Spot Description:
Sec. Twp. S. R.
feet from N / S Line of Section
feet from E / W Line of Section
GPS Location: Lat: , Long:
Datum: NAD27 NAD83 WGS84
County: Elevation: GL KB
Lease Name: Well #:
Well Type: (check one) Oil Gas OG WSW Other:
SWD Permit #: ENHR Permit #:
Gas Storage Permit #:
Spud Date: Date Shut-In:

Table with 7 columns: Conductor, Surface, Production, Intermediate, Liner, Tubing. Rows include Size, Setting Depth, Amount of Cement, Top of Cement, Bottom of Cement.

Casing Fluid Level from Surface: How Determined? Date:
Casing Squeeze(s): to w / sacks of cement, to w / sacks of cement. Date:
Do you have a valid Oil & Gas Lease? Yes No
Depth and Type: Junk in Hole at Tools in Hole at Casing Leaks: Yes No Depth of casing leak(s):
Type Completion: ALT. I ALT. II Depth of: DV Tool: w / sacks of cement Port Collar: w / sack of cement
Packer Type: Size: Inch Set at: Feet
Total Depth: Plug Back Depth: Plug Back Method:

Geological Data:

Table with 4 columns: Formation Name, Formation Top, Formation Base, Completion Information. Rows 1 and 2.

UNDER PENALTY OF PERJURY I HEREBY ATTEST THAT THE INFORMATION CONTAINED HEREIN IS TRUE AND CORRECT TO THE BEST OF MY KNOWLEDGE

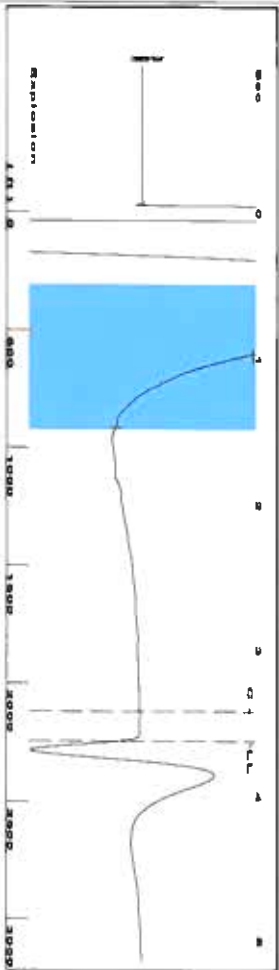
Submitted Electronically

Do NOT Write in This Space - KCC USE ONLY
Date Tested: Results: Date Plugged: Date Repaired: Date Put Back in Service:
Review Completed by: Comments:
TA Approved: Yes Denied Date:

Mail to the Appropriate KCC Conservation Office:

Table with 3 columns: District Office, Address, Phone. Rows for District Office #1, #2, #3, #4.

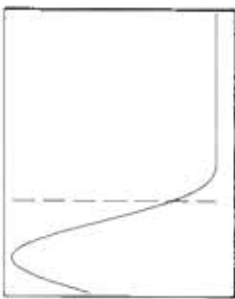
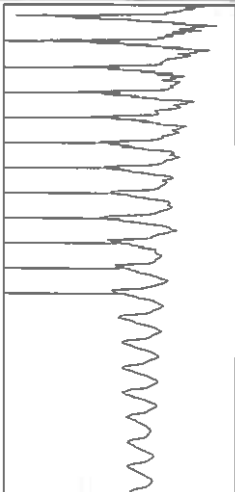
Group: Merit Energy Company-Ulysses Well: Gilbert A-2 (acquired on: 04/21/22 15:40:04)



Filter Type High Pass Automatic Collar Count Yes
 Manual Acoustic Velo 1231.07 ft/s Manual JTS/sec 19.4175

Time 3.63 sec
 Joints 70.8627 Jts
 Depth 2246.35 ft

[0.5 to 1.5 (Sec)]



Analysis Method: Automatic

Group: Merit Energy Company-Ulysses Well: Gilbert A-2 (acquired on: 04/21/22 15:40:04)

Production Current	Potential	Casing Pressure
Oil - *	BBL/D	0.2 psi (g)
Water - *	BBL/D	Casing Pressure Buildup
Gas - *	Mscf/D	-0.1 psi
IPR Method	Vogel	1.00 min
PBHP/SBHP		Gas/Liquid Interface Pressure
Production Efficiency	0.0	1.1 psi (g)

Producing	Annular
Gas Flow	0 Mscf/D
% Liquid	100 %

Oil 40 deg API	Liquid Level Depth
Water 1.03 Sp Gr H2O	2246.35 ft
Gas 0.76 Sp Gr AIR	Pump Intake Depth
Acoustic Velocity 1237.66 ft/s	2864.00 ft
	Formation Depth
	2778.00 ft

Formation Submergence
 Total Gaseous Liquid Column HT (TVD)
 Equivalent Gas Free Liquid HT (TVD)

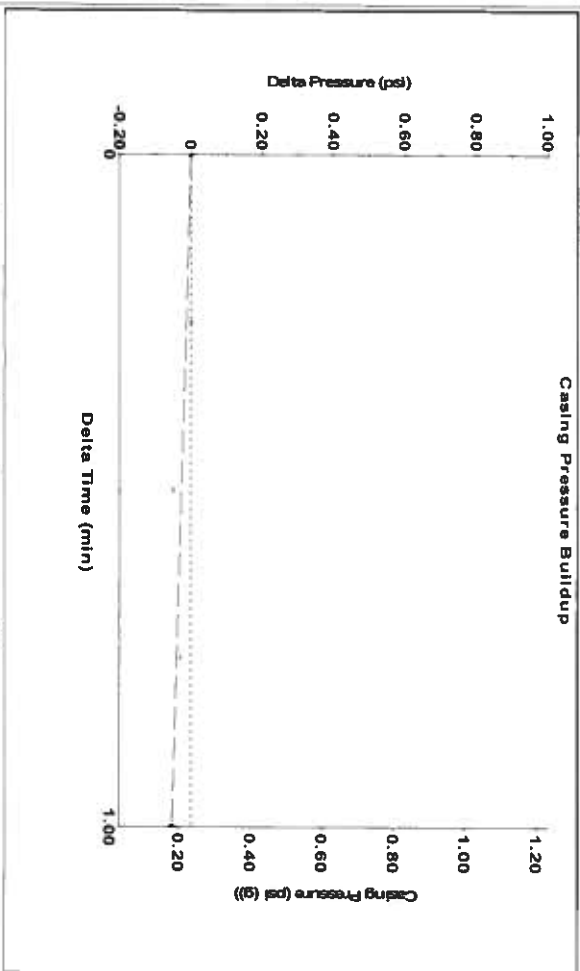
618 ft
 618 ft



Pump Intake 210.2 psi (g)
 Producing BHP 181.4 psi (g)
 Static BHP - * psi (g)

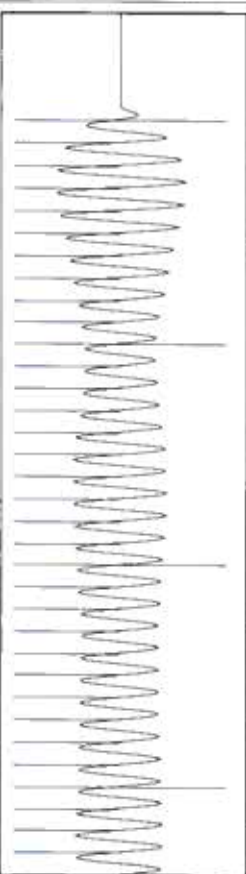
4/21/22

Group: Merit Energy Company-Ulysses Well: Gilbert A-2 (acquired on: 04/21/22 15:40:04)

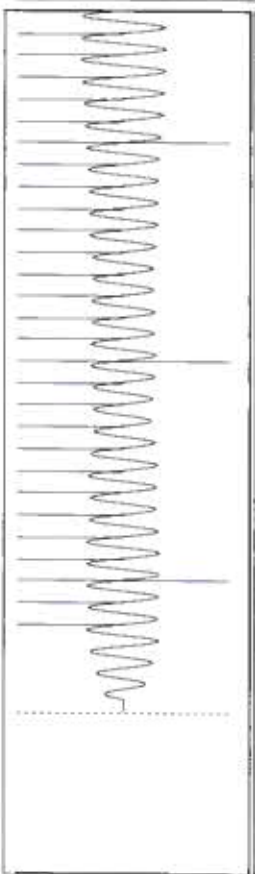


Change in Pressure -0.05 psi PTT: 6716
 Change in Time 1.00 min Range 0 - 9 psi

Group: Merit Energy Company-Ulysses Well: Gilbert A-2 (acquired on: 04/21/22 15:40:04)



19.41



19.66

Acoustic Velocity	1237.66 ft/s	Joints counted	62
Joints Per Second	19.5214 Jts/sec	Joints to liquid level	70.8627
Depth to liquid level	2246.35 ft	Filter Width	17.4175
Automatic Collar Count	Yes	Time to 1st Collar	0.248

January 05, 2023

Katherine McClurkan
Merit Energy Company, LLC
13727 Noel Road, Suite 1200
Dallas, TX 75240

Re: Temporary Abandonment
API 15-067-21160-00-01
Gilbert A 2
SW/4 Sec.32-30S-35W
Grant County, Kansas

Dear Katherine McClurkan:

Your application for Temporary Abandonment (TA) for the above-listed well is denied for the following reasons(s):

Shut-in Over 10 years

Pursuant to K.A.R. 82-3-111, the well must be plugged, or returned to service, or obtain temporary abandonment status by 02/04/2023.

This deadline does NOT override any compliance deadline given to you in any Commission Order.

You may contact me if you have any questions.

Sincerely,
Michael Maier
KCC DISTRICT 1