

KANSAS CORPORATION COMMISSION
OIL & GAS CONSERVATION DIVISION

TEMPORARY ABANDONMENT WELL APPLICATION

OPERATOR: License#
Name:
Address 1:
Address 2:
City: State: Zip:
Contact Person:
Phone:
Contact Person Email:
Field Contact Person:
Field Contact Person Phone:

API No. 15-
Spot Description:
Sec. Twp. S. R.
GPS Location: Lat, Long
Datum: NAD27, NAD83, WGS84
County: Elevation:
Lease Name: Well #:
Well Type: Oil, Gas, OG, WSW, Other
SWD Permit #: ENHR Permit #:
Gas Storage Permit #:
Spud Date: Date Shut-In:

Table with 7 columns: Conductor, Surface, Production, Intermediate, Liner, Tubing. Rows include Size, Setting Depth, Amount of Cement, Top of Cement, Bottom of Cement.

Casing Fluid Level from Surface: How Determined? Date:
Casing Squeeze(s): to w / sacks of cement, to w / sacks of cement. Date:
Do you have a valid Oil & Gas Lease? Yes No
Depth and Type: Junk in Hole at Tools in Hole at Casing Leaks: Yes No Depth of casing leak(s):
Type Completion: ALT. I ALT. II Depth of: DV Tool: w / sacks of cement Port Collar: w / sack of cement
Packer Type: Size: Inch Set at: Feet
Total Depth: Plug Back Depth: Plug Back Method:

Geological Data:

Table with 4 columns: Formation Name, Formation Top, Formation Base, Completion Information. Rows 1 and 2.

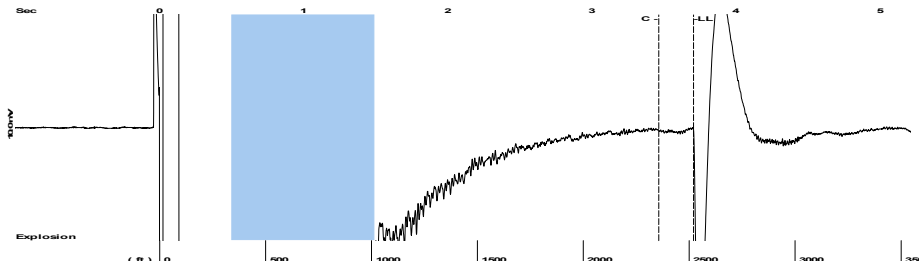
UNDER PENALTY OF PERJURY I HEREBY ATTEST THAT THE INFORMATION CONTAINED HEREIN IS TRUE AND CORRECT TO THE BEST OF MY KNOWLEDGE

Submitted Electronically

Do NOT Write in This Space - KCC USE ONLY
Date Tested: Results: Date Plugged: Date Repaired: Date Put Back in Service:
Review Completed by: Comments:
TA Approved: Yes Denied Date:

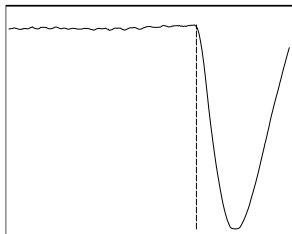
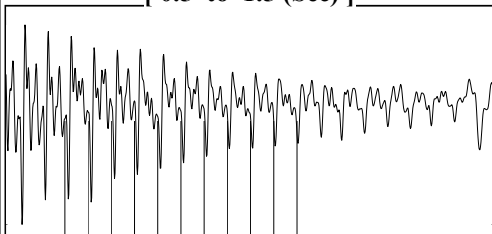
Mail to the Appropriate KCC Conservation Office:

Table with 3 columns: District Office #, Address, Phone. Rows 1-4.



Filter Type High Pass Automatic Collar Count Yes Time 3.705 sec
 Manual Acoustic Veloc 1329.14 ft/s Manual JTS/sec 20.9644 Joints 79.4916 Jts
 Depth 2519.88 ft

[0.5 to 1.5 (Sec)]

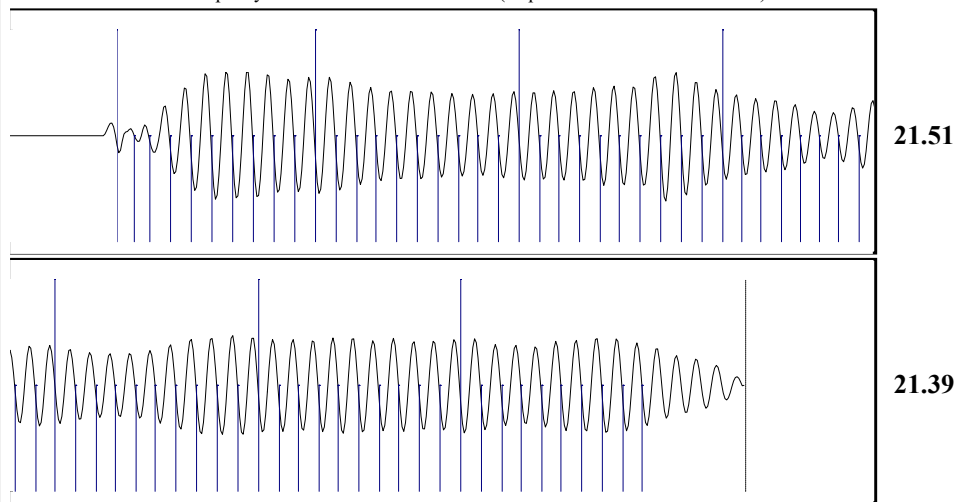


Analysis Method: Automatic



Change in Pressure 0.00 psi NONE
 Range 0 - ? psi
 Change in Time 0.00 min

Production	Potential	Casing Pressure		Producing	
Current		0.0 psi (g)		Annular Gas Flow	
Oil - *-	- *- BBL/D	Casing Pressure Buildup		- *- Mscf/D	
Water - *-	- *- BBL/D	- *- psi		% Liquid	100 %
Gas - *-	- *- Mscf/D	- *- min			
IPR Method	Vogel	Gas/Liquid Interface Pressure			
PBHP/SBHP	- *-	- *- psi (g)			
Production Efficiency	0.0	Liquid Level Depth			
Oil 40 deg.API		2519.88 ft			
Water 1.05 Sp.Gr.H2O		Pump Intake Depth			
Gas 0.65 Sp.Gr.AIR		- *- ft			
Acoustic Velocity	1360.26 ft/s	Formation Depth			
		3350.00 ft			
Formation Submergence		Pump Intake			
Total Gaseous Liquid Column HT (TVD)		- *- psi (g)			
Equivalent Gas Free Liquid HT (TVD)		Producing BHP			
		- *- psi (g)			
Acoustic Test		Static BHP			
		- *- psi (g)			



Acoustic Velocity	1360.26 ft/s	Joints counted	69
Joints Per Second	21.4552 jts/sec	Joints to liquid level	79.4916
Depth to liquid level	2519.88 ft	Filter Width	18.9644
Automatic Collar Count	Yes	Time to 1st Collar	0.248
			3.464

Conservation Division
District Office No. 4
2301 E. 13th Street
Hays, KS 67601-2651



Phone: 785-261-6250
Fax: 785-625-0564
<http://kcc.ks.gov/>

Dwight D. Keen, Chair
Susan K. Duffy, Commissioner
Andrew J. French, Commissioner

Laura Kelly, Governor

January 13, 2023

Jose Reyes
American Warrior, Inc.
PO BOX 399
GARDEN CITY, KS 67846-0399

Re: Temporary Abandonment
API 15-009-15427-00-00
KEENAN 4
SW/4 Sec.21-17S-14W
Barton County, Kansas

Dear Jose Reyes:

"Your temporary abandonment (TA) application for the well listed above has been approved. In accordance with K.A.R. 82-3-111 the TA status of this well will expire 01/13/2024.

- * If you return this well to service or plug it, please notify the District Office.
- * If you sell this well you are required to file a Transfer of Operator form, T-1.
- * If the well will remain temporarily abandoned, you must submit a new TA application, CP-111, before 01/13/2024.

You may contact me at the number above if you have questions.

Very truly yours,

RICHARD WILLIAMS"