

KANSAS CORPORATION COMMISSION
OIL & GAS CONSERVATION DIVISION

TEMPORARY ABANDONMENT WELL APPLICATION

OPERATOR: License#
Name:
Address 1:
Address 2:
City: State: Zip:
Contact Person:
Phone:
Contact Person Email:
Field Contact Person:
Field Contact Person Phone:

API No. 15-
Spot Description:
Sec. Twp. S. R.
feet from N / S Line of Section
feet from E / W Line of Section
GPS Location: Lat: , Long:
Datum: NAD27 NAD83 WGS84
County: Elevation: GL KB
Lease Name: Well #:
Well Type: (check one) Oil Gas OG WSW Other:
SWD Permit #: ENHR Permit #:
Gas Storage Permit #:
Spud Date: Date Shut-In:

Table with 7 columns: Conductor, Surface, Production, Intermediate, Liner, Tubing. Rows include Size, Setting Depth, Amount of Cement, Top of Cement, Bottom of Cement.

Casing Fluid Level from Surface: How Determined? Date:
Casing Squeeze(s): to w / sacks of cement, to w / sacks of cement. Date:
Do you have a valid Oil & Gas Lease? Yes No
Depth and Type: Junk in Hole at Tools in Hole at Casing Leaks: Yes No Depth of casing leak(s):
Type Completion: ALT. I ALT. II Depth of: DV Tool: w / sacks of cement Port Collar: w / sack of cement
Packer Type: Size: Inch Set at: Feet
Total Depth: Plug Back Depth: Plug Back Method:

Geological Data:

Table with 4 columns: Formation Name, Formation Top, Formation Base, Completion Information. Rows 1 and 2.

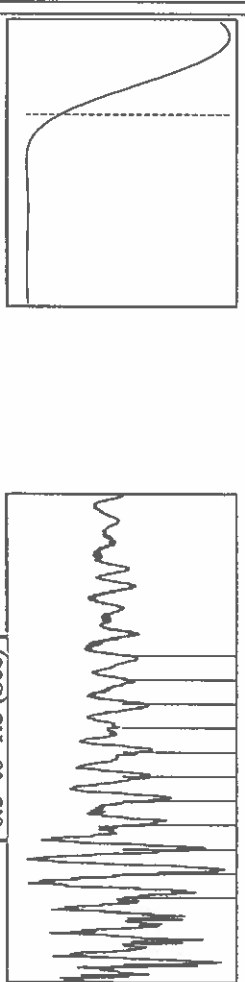
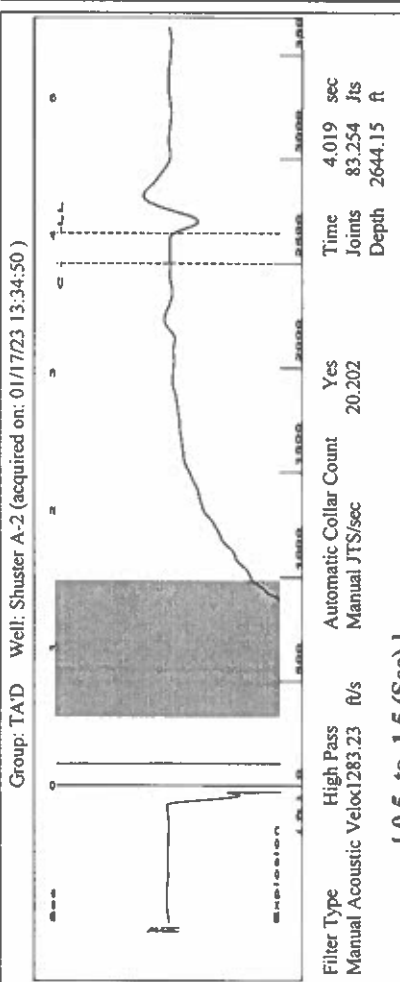
UNDER PENALTY OF PERJURY I HEREBY ATTEST THAT THE INFORMATION CONTAINED HEREIN IS TRUE AND CORRECT TO THE BEST OF MY KNOWLEDGE

Submitted Electronically

Do NOT Write in This Space - KCC USE ONLY
Date Tested: Results: Date Plugged: Date Repaired: Date Put Back in Service:
Review Completed by: Comments:
TA Approved: Yes Denied Date:

Mail to the Appropriate KCC Conservation Office:

Table with 2 columns: Office Address, Phone. Rows for District Office #1, #2, #3, #4.

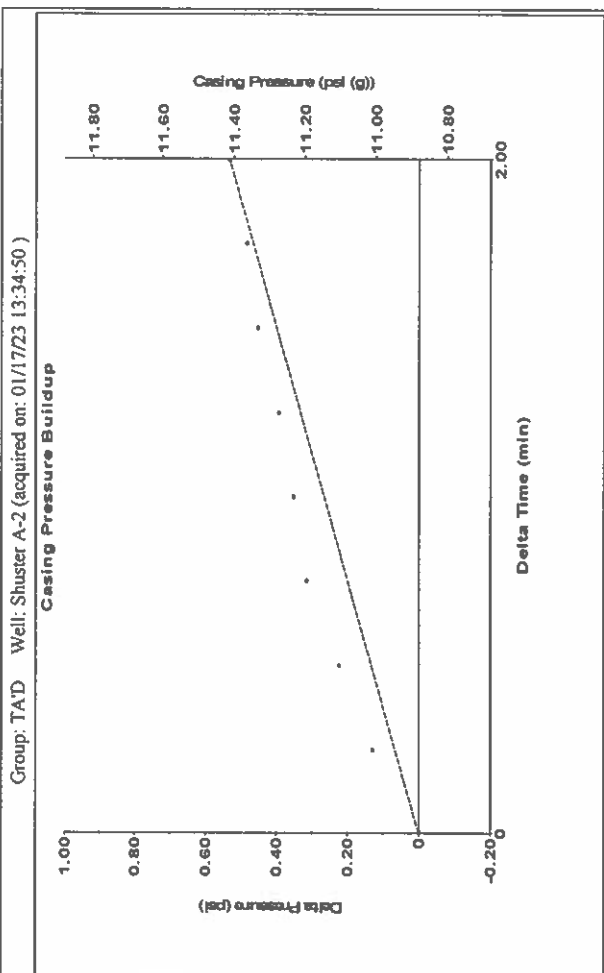


Analysis Method: Automatic

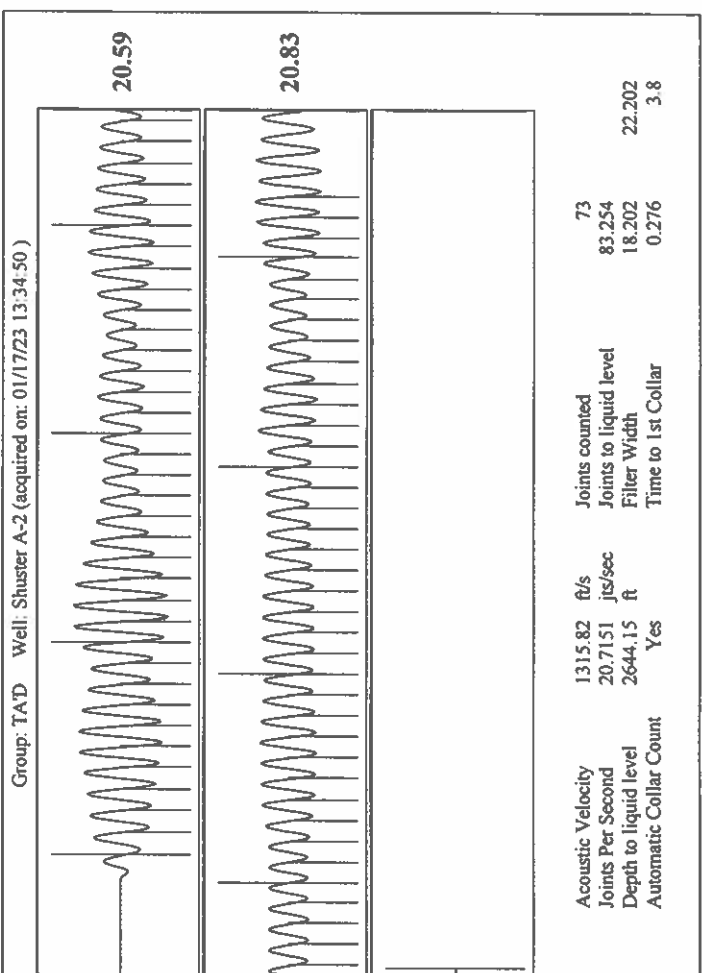
Group: TAD Well: Shuster A-2 (acquired on: 01/17/23 13:34:50)

Production Current	Potential	Casing Pressure	Producing
Oil -*- BBL/D	-*- BBL/D	10.9 psi (g)	Annular
Water -*- BBL/D	-*- BBL/D	Casing Pressure Buildup	Gas Flow 4 Mscf/D
Gas -*- Mscf/D	-*- Mscf/D	0.5 psi	% Liquid 77 %
IPR Method Vogel	Gas/Liquid Interface Pressure	2.00 min	
PBHP/SBHP -*-	12.5 psi (g)		
Production Efficiency 0.0	Liquid Level Depth		
Oil 40 deg.API	2644.15 ft		
Water 1.05 Sp.Gr.H2O	Pump Intake Depth		
Gas 0.69 Sp.Gr.AIR	2816.00 ft		
Acoustic Velocity 1315.82 ft/s	Formation Depth		
	2891.00 ft		
Formation Submergence			
Total Gaseous Liquid Column HT (TVD) 172 ft			
Equivalent Gas Free Liquid HT (TVD) 133 ft			
Acoustic Test			

Pump Intake 57.3 psi (g)
 Producing BHP 86.3 psi (g)
 Static BHP -*- psi (g)



Change in Pressure 0.53 psi PT 14654 Range
 Change in Time 2.00 min



January 19, 2023

Katherine McClurkan
Merit Energy Company, LLC
13727 Noel Road, Suite 1200
Dallas, TX 75240-7362

Re: Temporary Abandonment
API 15-093-20494-00-00
Shuster A 2
NE/4 Sec.29-24S-36W
Kearny County, Kansas

Dear Katherine McClurkan:

"Your temporary abandonment (TA) application for the well listed above has been approved. In accordance with K.A.R. 82-3-111 the TA status of this well will expire 01/19/2024.

- * If you return this well to service or plug it, please notify the District Office.
- * If you sell this well you are required to file a Transfer of Operator form, T-1.
- * If the well will remain temporarily abandoned, you must submit a new TA application, CP-111, before 01/19/2024.

You may contact me at the number above if you have questions.

Very truly yours,

Michael Maier"