

KANSAS CORPORATION COMMISSION
OIL & GAS CONSERVATION DIVISION

TEMPORARY ABANDONMENT WELL APPLICATION

OPERATOR: License# _____
 Name: _____
 Address 1: _____
 Address 2: _____
 City: _____ State: _____ Zip: _____ + _____
 Contact Person: _____
 Phone: (_____) _____
 Contact Person Email: _____
 Field Contact Person: _____
 Field Contact Person Phone: (_____) _____

API No. 15- _____
 Spot Description: _____
 _____ - _____ - _____ - _____ Sec. _____ Twp. _____ S. R. _____ E W
 _____ feet from N / S Line of Section
 _____ feet from E / W Line of Section
 GPS Location: Lat: _____, Long: _____
(e.g. xx.xxxxx) (e.g. -xxx.xxxxx)
 Datum: NAD27 NAD83 WGS84
 County: _____ Elevation: _____ GL KB
 Lease Name: _____ Well #: _____
 Well Type: (check one) Oil Gas OG WSW Other: _____
 SWD Permit #: _____ ENHR Permit #: _____
 Gas Storage Permit #: _____
 Spud Date: _____ Date Shut-In: _____

	Conductor	Surface	Production	Intermediate	Liner	Tubing
Size						
Setting Depth						
Amount of Cement						
Top of Cement						
Bottom of Cement						

Casing Fluid Level from Surface: _____ How Determined? _____ Date: _____
 Casing Squeeze(s): _____ to _____ w / _____ sacks of cement, _____ to _____ w / _____ sacks of cement. Date: _____
(top) (bottom) (top) (bottom)
 Do you have a valid Oil & Gas Lease? Yes No
 Depth and Type: Junk in Hole at _____ Tools in Hole at _____ Casing Leaks: Yes No Depth of casing leak(s): _____
(depth) (depth)
 Type Completion: ALT. I ALT. II Depth of: DV Tool: _____ w / _____ sacks of cement Port Collar: _____ w / _____ sack of cement
(depth) (depth)
 Packer Type: _____ Size: _____ Inch Set at: _____ Feet
 Total Depth: _____ Plug Back Depth: _____ Plug Back Method: _____

Geological Data:

Formation Name	Formation Top	Formation Base	Completion Information
1. _____	At: _____	to _____ Feet	Perforation Interval _____ to _____ Feet or Open Hole Interval _____ to _____ Feet
2. _____	At: _____	to _____ Feet	Perforation Interval _____ to _____ Feet or Open Hole Interval _____ to _____ Feet

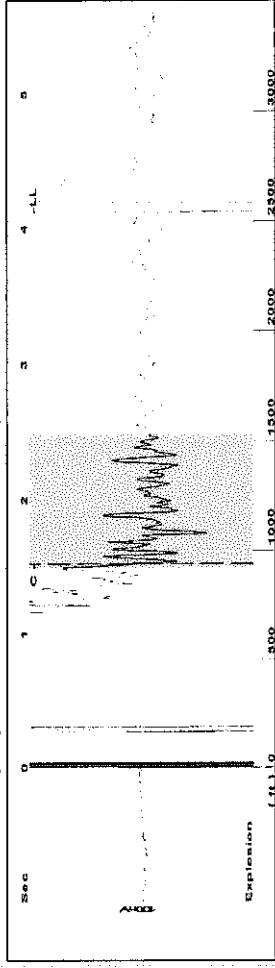
UNDER PENALTY OF PERJURY I HEREBY ATTEST THAT THE INFORMATION CONTAINED HEREIN IS TRUE AND CORRECT TO THE BEST OF MY KNOWLEDGE

Submitted Electronically

Do NOT Write in This Space - KCC USE ONLY	Date Tested: _____	Results: _____	Date Plugged: _____	Date Repaired: _____	Date Put Back in Service: _____
	Review Completed by: _____ Comments: _____				
TA Approved: <input type="checkbox"/> Yes <input type="checkbox"/> Denied Date: _____					

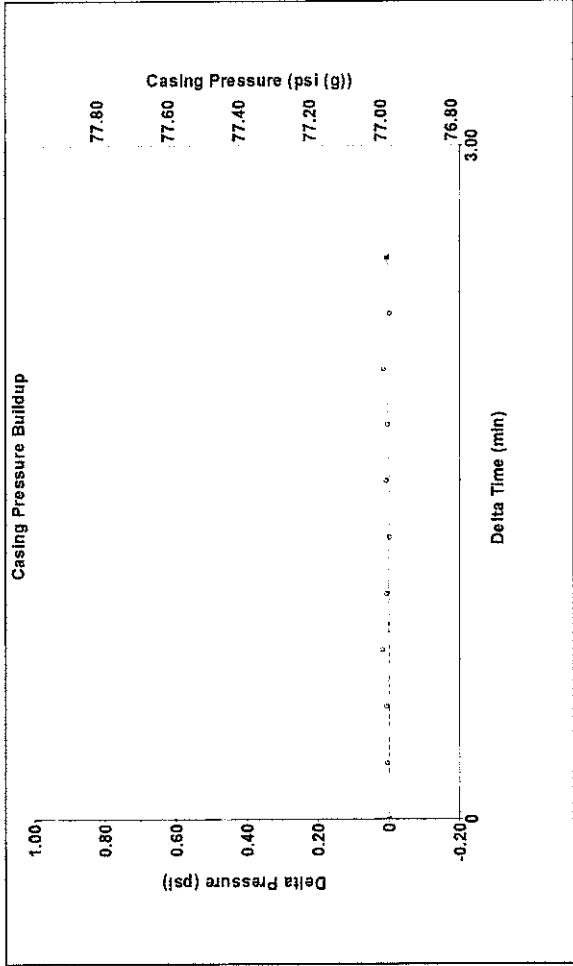
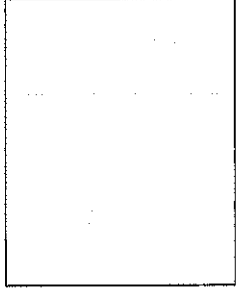
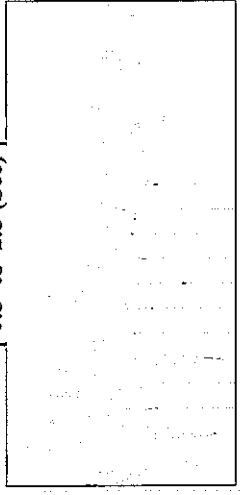
Mail to the Appropriate KCC Conservation Office:

	KCC District Office #1 - 210 E. Frontview, Suite A, Dodge City, KS 67801	Phone 620.682.7933
	KCC District Office #2 - 3450 N. Rock Road, Building 600, Suite 601, Wichita, KS 67226	Phone 316.337.7400
	KCC District Office #3 - 137 E. 21st St., Chanute, KS 66720	Phone 620.902.6450
	KCC District Office #4 - 2301 E. 13th Street, Hays, KS 67601-2651	Phone 785.261.6250

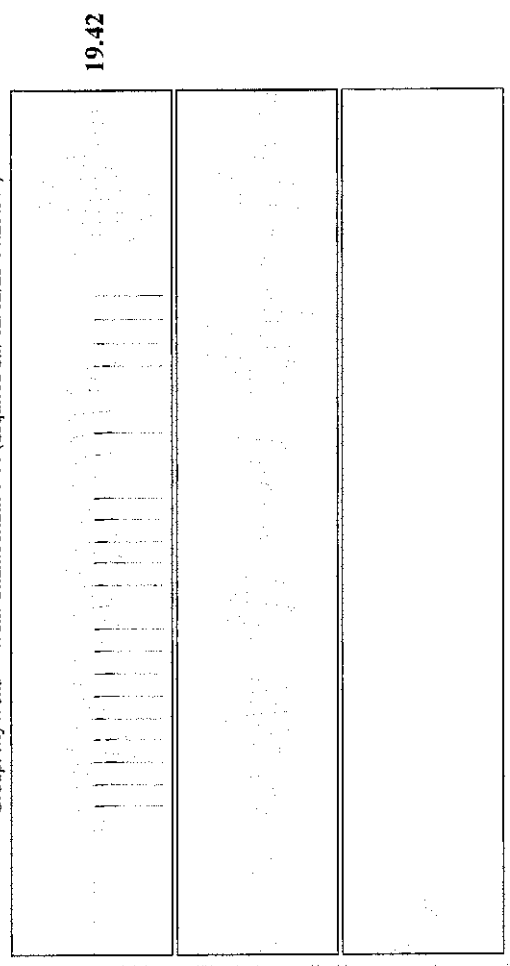
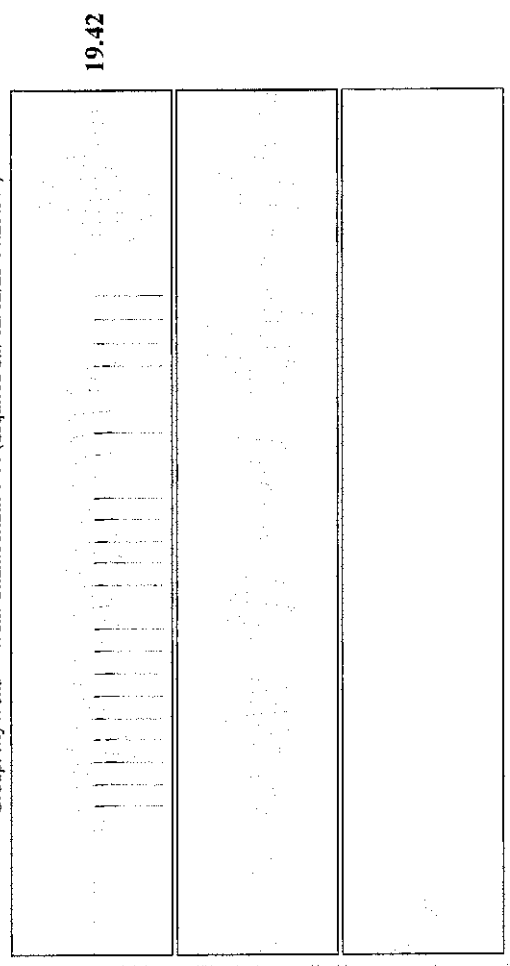


Filter Type High Pass Automatic Collar Count Yes
 Manual Acoustic Velo 1231.07 ft/s Manual JTS/sec 19.4175
 Time 4.126 sec
 Joints 80.1165 Jts
 Depth 2539.69 ft

1.5 to 2.5 (Sec)



Change in Pressure 0.01 psi PT18175 Range
 Change in Time 2.50 min



Analysis Method: Automatic

Production Current	Potential	Casing Pressure	77.0 psi (g)
Oil - *	BBL/D	Casing Pressure Buildup	0.006 psi
Water - *	BBL/D	Gas/Liquid Interface Pressure	83.2 psi (g)
Gas - *	Msc/D	Liquid Level Depth	2539.69 ft
IPR Method	Vogel	Pump Intake Depth	2645.00 ft
PBHP/SBHP	- *	Formation Depth	2765.00 ft
Production Efficiency	0.0	Acoustic Velocity	1231.07 ft/s
Oil 40 deg API		Oil Column Height MD	0 ft
Water 1.05 Sp.Gr.H2O		Water Column Height MD	221 ft
Gas 0.76 Sp.Gr.AIR		Static BHP	183.8 psi (g)
Acoustic Velocity	1231.07 ft/s		

Acoustic Test

Acoustic Velocity	1231.07 ft/s	Joints counted	24
Joints Per Second	19.4175 jts/sec	Joints to liquid level	80.1165
Depth to liquid level	2539.69 ft	Filter Width	17.4175
Automatic Collar Count	Yes	Time to 1st Collar	1.524

February 03, 2023

Liv Adams
XTO Energy Inc.
210 PARK AVE STE 2350
OKLAHOMA CITY, OK 73102-5683

Re: Temporary Abandonment
API 15-055-00760-00-00
CHAMBERLAIN 1-11
SW/4 Sec.11-23S-32W
Finney County, Kansas

Dear Liv Adams:

"Your temporary abandonment (TA) application for the well listed above has been approved. In accordance with K.A.R. 82-3-111 the TA status of this well will expire 02/03/2024.

- * If you return this well to service or plug it, please notify the District Office.
- * If you sell this well you are required to file a Transfer of Operator form, T-1.
- * If the well will remain temporarily abandoned, you must submit a new TA application, CP-111, before 02/03/2024.

You may contact me at the number above if you have questions.

Very truly yours,

Michael Maier"