

KANSAS CORPORATION COMMISSION
OIL & GAS CONSERVATION DIVISION

TEMPORARY ABANDONMENT WELL APPLICATION

OPERATOR: License#
Name:
Address 1:
Address 2:
City: State: Zip:
Contact Person:
Phone:
Contact Person Email:
Field Contact Person:
Field Contact Person Phone:

API No. 15-
Spot Description:
Sec. Twp. S. R.
GPS Location: Lat: Long:
Datum: NAD27 NAD83 WGS84
County: Elevation:
Lease Name: Well #:
Well Type: Oil Gas OG WSW Other:
SWD Permit #: ENHR Permit #:
Gas Storage Permit #:
Spud Date: Date Shut-In:

Table with 7 columns: Conductor, Surface, Production, Intermediate, Liner, Tubing. Rows include Size, Setting Depth, Amount of Cement, Top of Cement, Bottom of Cement.

Casing Fluid Level from Surface: How Determined? Date:
Casing Squeeze(s): to w / sacks of cement, to w / sacks of cement. Date:
Do you have a valid Oil & Gas Lease? Yes No
Depth and Type: Junk in Hole at Tools in Hole at Casing Leaks: Yes No Depth of casing leak(s):
Type Completion: ALT. I ALT. II Depth of: DV Tool: w / sacks of cement Port Collar: w / sack of cement
Packer Type: Size: Inch Set at: Feet
Total Depth: Plug Back Depth: Plug Back Method:

Geological Data:

Table with 4 columns: Formation Name, Formation Top, Formation Base, Completion Information. Rows 1 and 2.

UNDER PENALTY OF PERJURY I HEREBY ATTEST THAT THE INFORMATION CONTAINED HEREIN IS TRUE AND CORRECT TO THE BEST OF MY KNOWLEDGE

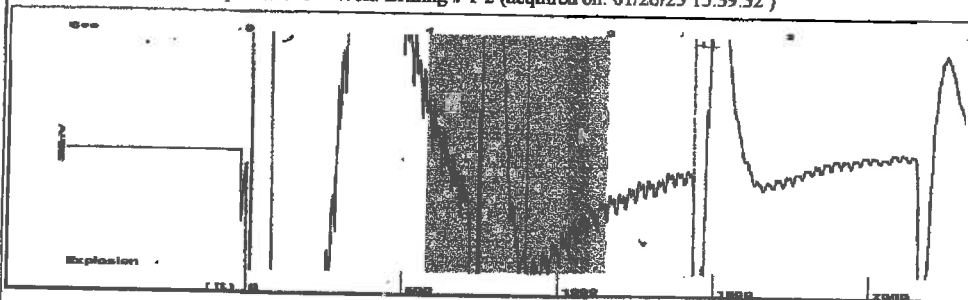
Submitted Electronically

Do NOT Write in This Space - KCC USE ONLY
Date Tested: Results: Date Plugged: Date Repaired: Date Put Back in Service:
Review Completed by: Comments:
TA Approved: Yes Denied Date:

Mail to the Appropriate KCC Conservation Office:

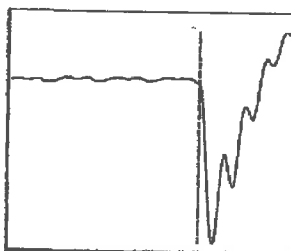
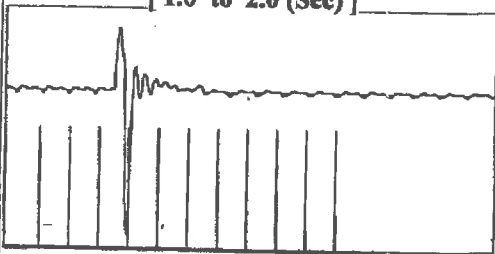
Table with 2 columns: Office Address, Phone. Rows for District Office #1, #2, #3, #4.

Group: Radium Well: Brining # 1-2 (acquired on: 01/26/23 15:39:32)



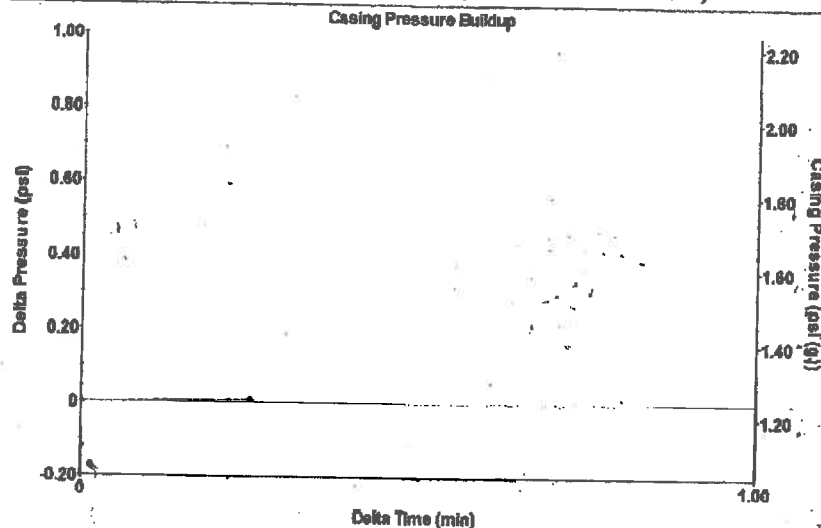
Filter Type High Pass Automatic Collar Count Yes
 Manual Acoustic Velocity 1067.87 ft/s Manual JTS/sec 16.4745
 Time 2.476 sec
 Joints 44.2143 Jts
 Depth 1432.98 ft

[1.0 to 2.0 (Sec)]



Analysis Method: Automatic

Group: Radium Well: Brining # 1-2 (acquired on: 01/26/23 15:39:32)

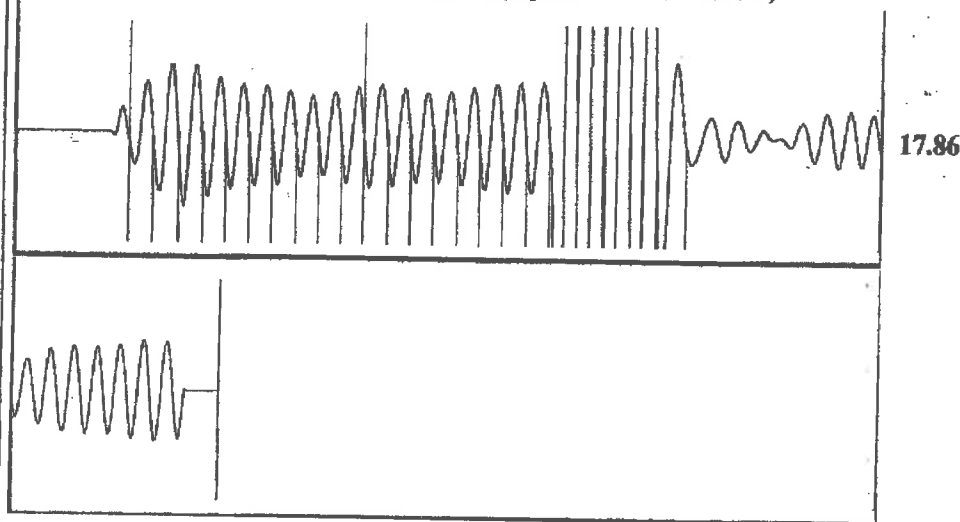


Change in Pressure 0.01 psi PT13440
 Change in Time 0.25 min Range 0 - 7 psi

Group: Radium Well: Brining # 1-2 (acquired on: 01/26/23 15:39:32)

Production Current	Potential	Casing Pressure	Producing
Oil -+-	-+- BBL/D	1.2 psi (g)	
Water -+-	-+- BBL/D	Casing Pressure Buildup	Annular Gas Flow
Gas -+-	-+- Mscf/D	0.006 psi	0 Mscf/D
		0.25 min	% Liquid
IPR Method	Vogel	Gas/Liquid Interface Pressure	100 %
PBHP/SBHP	-+-	1.9 psi (g)	
Production Efficiency	0.0		
Oil 40 deg.API		Liquid Level Depth	
Water 1.05 Sp.Gr.H2O		1432.98 ft	
Gas 0.82 Sp.Gr.AIR		Pump Intake Depth	
Acoustic Velocity	1157.5 ft/s	3501.00 ft	
		Formation Depth	
		3502.00 ft	
Formation Submergence		Pump Intake	
Total Gaseous Liquid Column HT (TVD)	2068 ft	692.9 psi (g)	
Equivalent Gas Free Liquid HT (TVD)	2068 ft	Producing BHP	
Acoustic Test		693.4 psi (g)	
		Static BHP	
		-+- psi (g)	

Group: Radium Well: Brining # 1-2 (acquired on: 01/26/23 15:39:32)



Acoustic Velocity 1157.5 ft/s Joints counted 23
 Joints Per Second 17.8571 jts/sec Joints to liquid level 44.2143
 Depth to liquid level 1432.98 ft Filter Width 14.4745 18.4745
 Automatic Collar Count Yes Time to 1st Collar 0.26 1.548

Conservation Division
District Office No. 4
2301 E. 13th Street
Hays, KS 67601-2651



Phone: 785-261-6250
<http://kcc.ks.gov/>

Susan K. Duffy, Chair
Dwight D. Keen, Commissioner
Andrew J. French, Commissioner

Laura Kelly, Governor

February 08, 2023

Loveness Mpanje
F. G. Holl Company L.L.C.
9431 E CENTRAL STE 100
WICHITA, KS 67206-2563

Re: Temporary Abandonment
API 15-009-24944-00-00
BRINING 1-2
SE/4 Sec.02-20S-14W
Barton County, Kansas

Dear Loveness Mpanje:

"Your temporary abandonment (TA) application for the well listed above has been approved. In accordance with K.A.R. 82-3-111 the TA status of this well will expire 02/08/2024.

- * If you return this well to service or plug it, please notify the District Office.
- * If you sell this well you are required to file a Transfer of Operator form, T-1.
- * If the well will remain temporarily abandoned, you must submit a new TA application, CP-111, before 02/08/2024.

You may contact me at the number above if you have questions.

Very truly yours,

RICHARD WILLIAMS"