

KANSAS CORPORATION COMMISSION
OIL & GAS CONSERVATION DIVISION

TEMPORARY ABANDONMENT WELL APPLICATION

OPERATOR: License#
Name:
Address 1:
Address 2:
City: State: Zip:
Contact Person:
Phone:
Contact Person Email:
Field Contact Person:
Field Contact Person Phone:

API No. 15-
Spot Description:
Sec. Twp. S. R.
GPS Location: Lat: Long:
Datum: NAD27 NAD83 WGS84
County: Elevation:
Lease Name: Well #:
Well Type: Oil Gas OG WSW Other:
SWD Permit #: ENHR Permit #:
Gas Storage Permit #:
Spud Date: Date Shut-In:

Table with 7 columns: Conductor, Surface, Production, Intermediate, Liner, Tubing. Rows include Size, Setting Depth, Amount of Cement, Top of Cement, Bottom of Cement.

Casing Fluid Level from Surface: How Determined? Date:
Casing Squeeze(s): to w / sacks of cement, to w / sacks of cement. Date:
Do you have a valid Oil & Gas Lease? Yes No
Depth and Type: Junk in Hole at Tools in Hole at Casing Leaks: Yes No Depth of casing leak(s):
Type Completion: ALT. I ALT. II Depth of: DV Tool: w / sacks of cement Port Collar: w / sack of cement
Packer Type: Size: Inch Set at: Feet
Total Depth: Plug Back Depth: Plug Back Method:

Geological Data:

Table with 4 columns: Formation Name, Formation Top, Formation Base, Completion Information. Rows 1 and 2.

UNDER PENALTY OF PERJURY I HEREBY ATTEST THAT THE INFORMATION CONTAINED HEREIN IS TRUE AND CORRECT TO THE BEST OF MY KNOWLEDGE

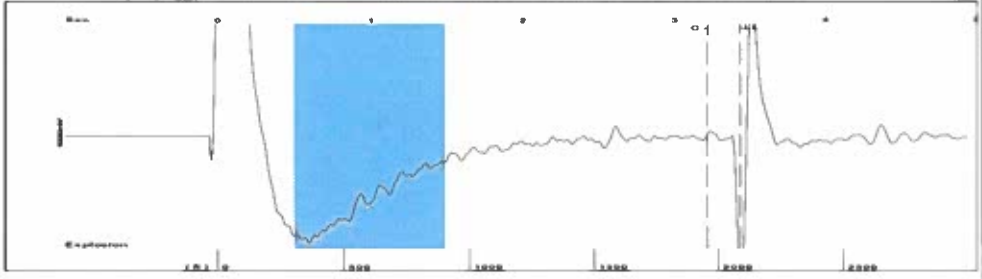
Submitted Electronically

Do NOT Write in This Space - KCC USE ONLY
Date Tested: Results: Date Plugged: Date Repaired: Date Put Back in Service:
Review Completed by: Comments:
TA Approved: Yes Denied Date:

Mail to the Appropriate KCC Conservation Office:

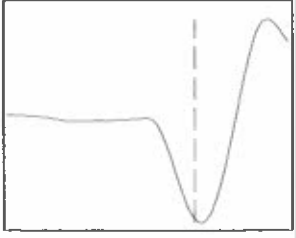
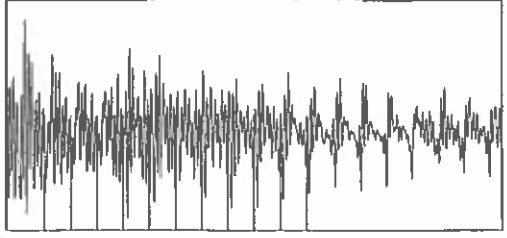
Table with 2 columns: Office Address, Phone. Rows for District Office #1, #2, #3, #4.

Group: TA'D WELLS Well: WMSU 1104 (acquired on: 02/07/23 14:17:56)



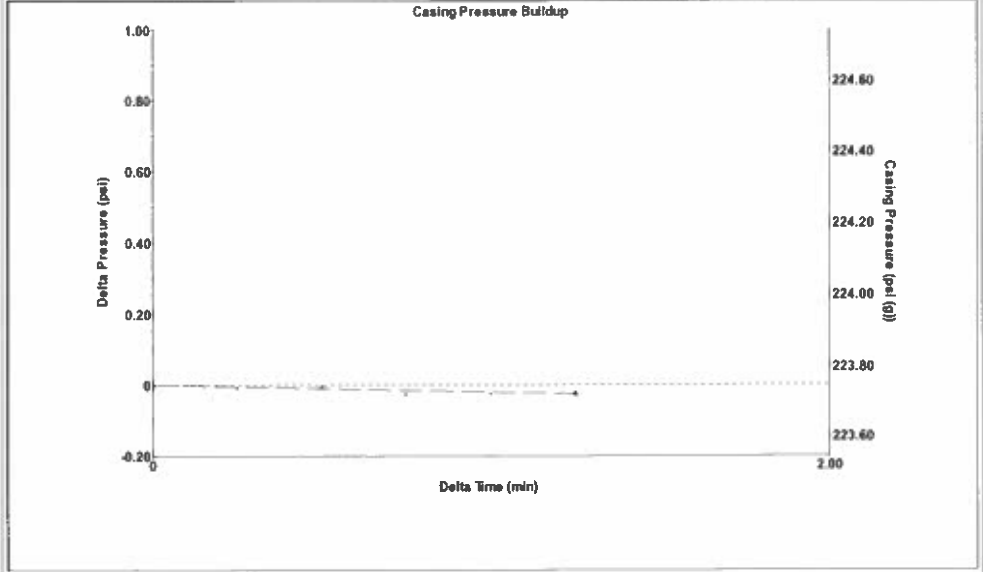
Filter Type High Pass Automatic Collar Count Yes Time 3.439 sec
 Manual Acoustic Vel 1200.76 ft/s Manual JTS/sec 18.9394 Joints 65.7732
 Depth 2085.01 ft

[0.5 to 1.5 (Sec)]



Analysis Method: Automatic

Group: TA'D WELLS Well: WMSU 1104 (acquired on: 02/07/23 14:17:56)



Change in Pressure -0.03 psi PT10411
 Change in Time 1.25 min Range 0 - ? psi

Group: TA'D WELLS Well: WMSU 1104 (acquired on: 02/07/23 14:17:56)

Production	Potential	Casing Pressure
Oil - * -	- * - BBL/D	223.7 psi (g)
Water - * -	- * - BBL/D	Casing Pressure Buildup
Gas - * -	- * - Mscf/D	-0.0 psi
		1.25 min
IPR Method	Vogel	Gas/Liquid Interface Pressure
PBHP/SBHP - * -	- * -	237.4 psi (g)
Production Efficiency 0.0		
Oil 40 deg.API		Liquid Level Depth
Water 1.05 Sp.Gr.H2O		2085.01 ft
Gas 0.74 Sp.Gr.AIR		Pump Intake Depth
		4943.00 ft
Acoustic Velocity 1212.57 ft/s		Formation Depth
		4945.00 ft



Producing

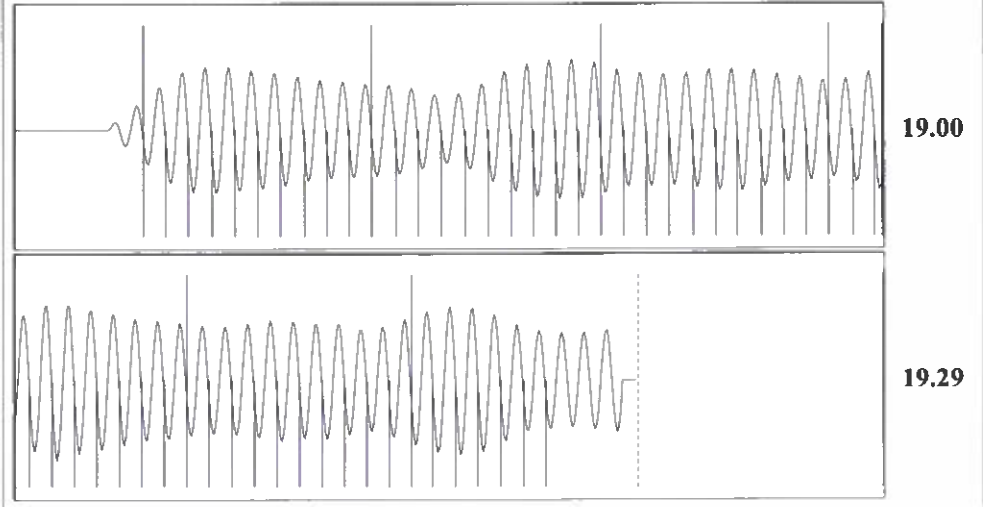
Annular Gas Flow 0 Mscf/D
 % Liquid 100 %

Pump Intake
 1158.6 psi (g)
Producing BHP
 1159.5 psi (g)
Static BHP
 - * - psi (g)

Formation Submergence
 Total Gaseous Liquid Column HT (TVD) 2858 ft
 Equivalent Gas Free Liquid HT (TVD) 2858 ft

Acoustic Test

Group: TA'D WELLS Well: WMSU 1104 (acquired on: 02/07/23 14:17:56)



Acoustic Velocity	1212.57 ft/s	Joints counted	56
Joints Per Second	19.1257 jts/sec	Joints to liquid level	65.7732
Depth to liquid level	2085.01 ft	Filter Width	16.9394 20.9394
Automatic Collar Count	Yes	Time to 1st Collar	0.296 3.224

February 09, 2023

Katherine McClurkan
Merit Energy Company, LLC
13727 Noel Road, Suite 1200
Dallas, TX 75240-7362

Re: Temporary Abandonment
API 15-129-20307-00-00
WILBURTON MORROW SAND UNIT 1104
NW/4 Sec.33-34S-41W
Morton County, Kansas

Dear Katherine McClurkan:

"Your temporary abandonment (TA) application for the well listed above has been approved. In accordance with K.A.R. 82-3-111 the TA status of this well will expire 02/09/2024.

- * If you return this well to service or plug it, please notify the District Office.
- * If you sell this well you are required to file a Transfer of Operator form, T-1.
- * If the well will remain temporarily abandoned, you must submit a new TA application, CP-111, before 02/09/2024.

You may contact me at the number above if you have questions.

Very truly yours,

Michael Maier"